




 Single Family    2561 SQFT    4 Beds    3/1 Baths    2 Car    0.19 Acre

## PROPERTY DETAILS

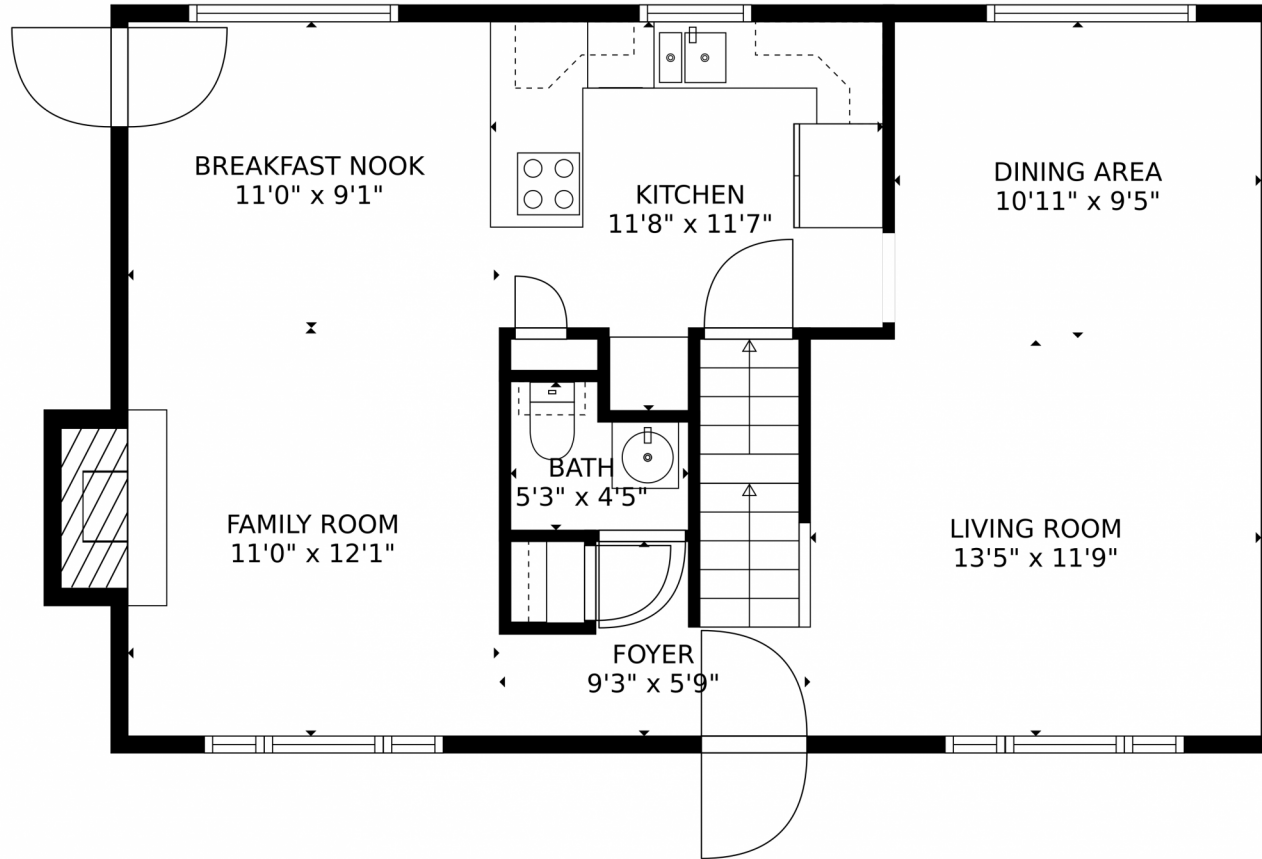
Welcome to this beautiful home with great amenities. It has hardwood floors, a newer kitchen, and updated baths. The patio and yard are also lovely. The home has been well-maintained and cared for. Inside, you'll find a great floor plan with a delightful kitchen featuring granite counters and stainless steel appliances. The main level has hardwood flooring and a wood-burning fireplace in the family room. The living room has new carpet and can be used as a dining or living space. Upstairs, there are four bedrooms, including a primary suite with an updated bathroom. The finished basement has a den with a wet bar and there is also an unfinished area for storage. The house has air conditioning and an oversized two-car garage. Outside, there is a fenced backyard with mature trees and a newer patio with a retractable awning and gas fire pit. The location is great, with easy access to Kendrick Lake Park and the Bear Creek Trail. It's also conveniently located near the airport and downtown Denver. This well-cared for home offers comfort, style, and convenience.



**Pandora & John Erlandson**  
303-888-6298  
pandora@pandorajohnproperties.com  
<https://www.pandorajohnproperties.com>



1633 S Holland Street, Lakewood, CO 80232 – Main Level



**TOTAL: 1914 sq. ft**  
Below Ground: 410 sq. ft, FLOOR 2: 715 sq. ft, FLOOR 3: 789 sq. ft  
EXCLUDED AREAS: UTILITY: 261 sq. ft, FIREPLACE: 7 sq. ft  
MEASUREMENTS CALCULATED BY V1Photos.com ARE DEEMED HIGHLY RELIABLE BUT NOT GUARANTEED.

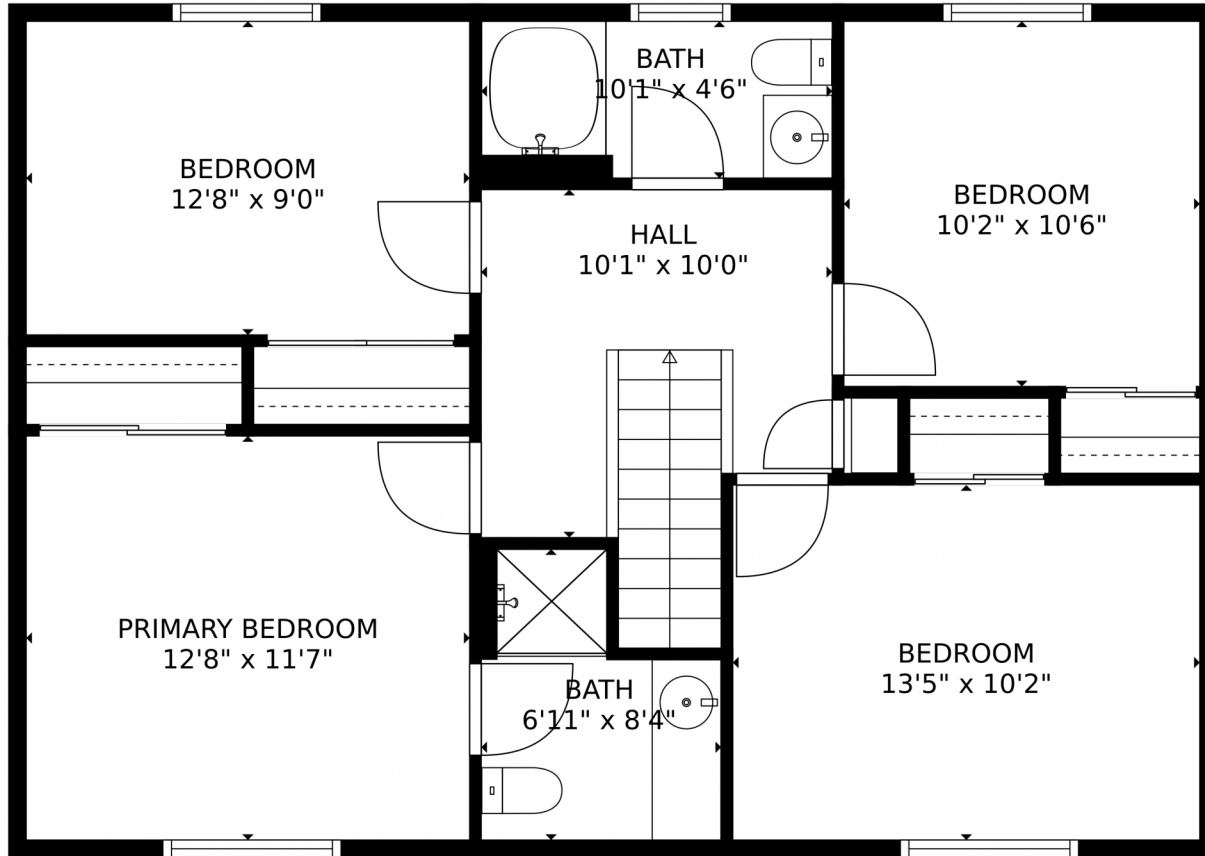
Disclaimer: Sizes and Dimensions are Approximate, Actual May Vary.



**Pandora & John Erlandson**  
303-888-6298  
pandora@pandorajohnproperties.com  
<https://www.pandorajohnproperties.com>



1633 S Holland Street, Lakewood, CO 80232 – Upper Level



**TOTAL: 1914 sq. ft**  
Below Ground: 410 sq. ft, FLOOR 2: 715 sq. ft, FLOOR 3: 789 sq. ft  
EXCLUDED AREAS: UTILITY: 261 sq. ft, FIREPLACE: 7 sq. ft  
MEASUREMENTS CALCULATED BY V1Photos.com ARE DEEMED HIGHLY RELIABLE BUT NOT GUARANTEED.



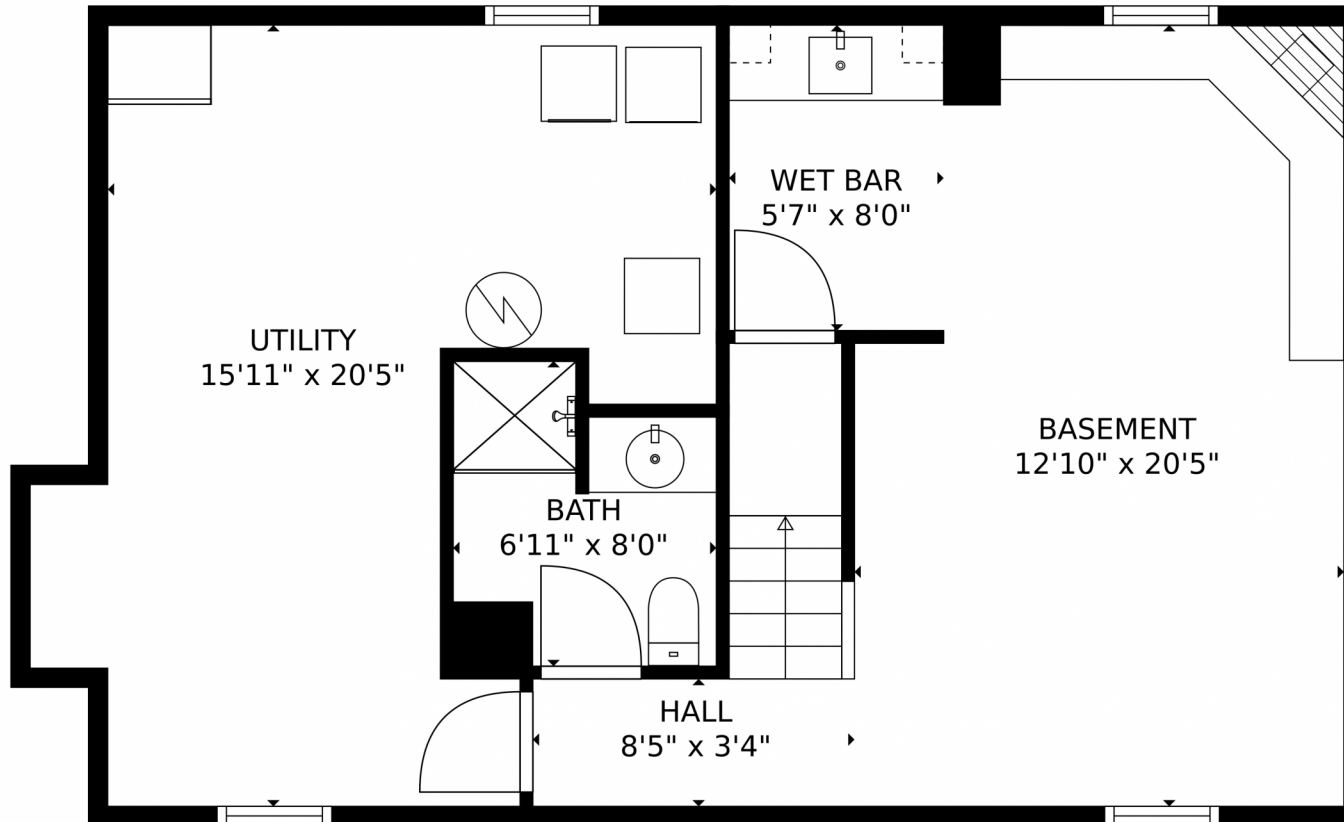
Disclaimer: Sizes and Dimensions are Approximate, Actual May Vary.



**Pandora & John Erlandson**  
303-888-6298  
pandora@pandorajohnproperties.com  
<https://www.pandorajohnproperties.com>



1633 S Holland Street, Lakewood, CO 80232 – Lower Level



**TOTAL: 1914 sq. ft**  
Below Ground: 410 sq. ft, FLOOR 2: 715 sq. ft, FLOOR 3: 789 sq. ft  
EXCLUDED AREAS: UTILITY: 261 sq. ft, FIREPLACE: 7 sq. ft  
MEASUREMENTS CALCULATED BY V1Photos.com ARE DEEMED HIGHLY RELIABLE BUT NOT GUARANTEED.

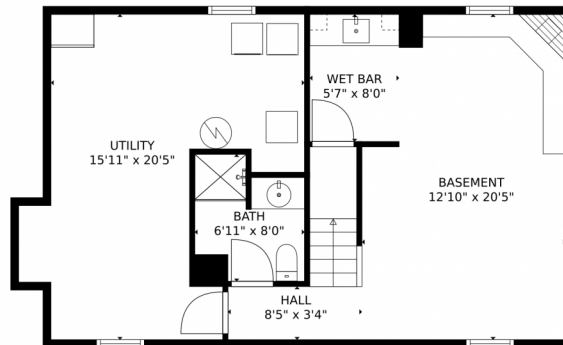
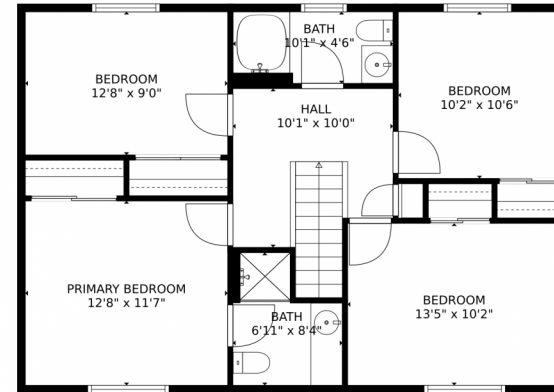
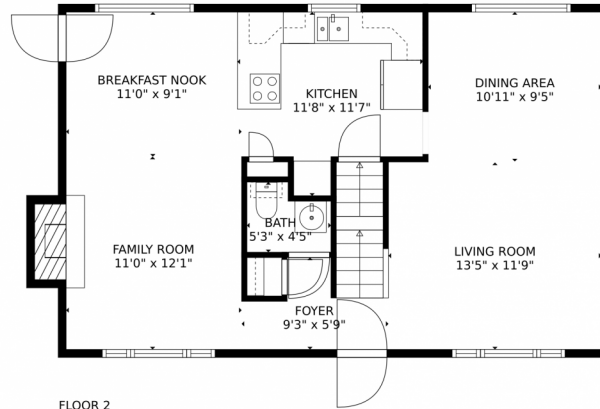
Disclaimer: Sizes and Dimensions are Approximate, Actual May Vary.



**Pandora & John Erlandson**  
303-888-6298  
pandora@pandorajohnproperties.com  
<https://www.pandorajohnproperties.com>



# 1633 S Holland Street, Lakewood, CO 80232 – All Levels



**TOTAL: 1914 sq. ft**  
Below Ground: 410 sq. ft, FLOOR 2: 715 sq. ft, FLOOR 3: 789 sq. ft  
EXCLUDED AREAS: UTILITY: 261 sq. ft, FIREPLACE: 7 sq. ft  
MEASUREMENTS CALCULATED BY V1Photos.COM ARE DEEMED HIGHLY RELIABLE BUT NOT GUARANTEED.



Disclaimer: Sizes and Dimensions are Approximate, Actual May Vary.



Pandora & John Erlandson  
303-888-6298  
pandora@pandorajohnproperties.com  
<https://www.pandorajohnproperties.com>

