



11388 Random Valley Circle  
 Parker, CO 80134  
 COMMUNITY: Random Valley

MLS # 6032811  
 PRICE \$899,900

Welcome to this amazing walk-out ranch home situated on 4.60 acres.



Single Family   2758 SQFT   4 Beds   3 Baths   2 Car   4.6 Acre

## PROPERTY DETAILS

Welcome to this walk-out ranch home on 4.60 acres. Community includes trails, park, and horse arena. Pine trees, fencing, covered front porch. Living room with fireplace, kitchen with stainless steel appliances. Primary bedroom with 5 piece master bath, 2 more bedrooms. Lower level has family room with fireplace, wet bar, 4th bedroom, laundry room. Backyard sitting area. Horse barn with 2 stalls, tack room, storage. New roof, vents, gutter system in 2023. Peaceful country lifestyle, 10 minutes from Parker and Elizabeth. Must-see!



**Reekae Tillman**  
 303-902-3094  
 reekae.tillman@gmail.com



# 11388 Random Valley Circle, Parker, CO 80134 — Main Level



**TOTAL: 2368 sq. ft**  
Below Ground: 1095 sq. ft, FLOOR 2: 1273 sq. ft, FLOOR 3: 0 sq. ft  
EXCLUDED AREAS: STORAGE: 49 sq. ft, GARAGE: 1096 sq. ft, PORCH: 228 sq. ft,  
PATIO: 1814 sq. ft, FIREPLACE: 6 sq. ft, STABLE: 221 sq. ft

MEASUREMENTS CALCULATED BY V1Photos.com ARE DEEMED HIGHLY RELIABLE BUT NOT GUARANTEED.



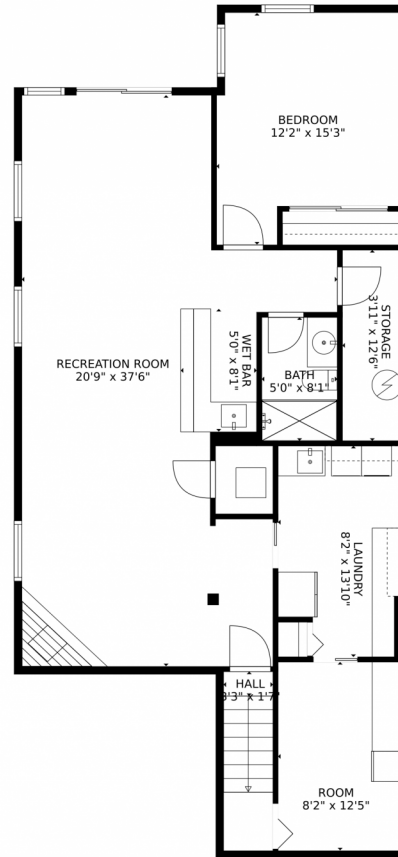
Disclaimer: Sizes and Dimensions are Approximate, Actual May Vary.



**ReeKae Tillman**  
303-902-3094  
reekae.tillman@gmail.com



# 11388 Random Valley Circle, Parker, CO 80134 – Lower Level



**TOTAL: 2368 sq. ft**

Below Ground: 1095 sq. ft, FLOOR 2: 1273 sq. ft, FLOOR 3: 0 sq. ft  
EXCLUDED AREAS: STORAGE: 49 sq. ft, GARAGE: 1096 sq. ft, PORCH: 228 sq. ft,  
PATIO: 1814 sq. ft, FIREPLACE: 6 sq. ft, STABLE: 221 sq. ft

MEASUREMENTS CALCULATED BY V1Photos.com ARE DEEMED HIGHLY RELIABLE BUT NOT GUARANTEED.



Disclaimer: Sizes and Dimensions are Approximate, Actual May Vary.



**ReeKae Tillman**  
303-902-3094  
reekae.tillman@gmail.com



Scan code  
for more  
property  
details

