



Single Family



4439 SQFT



5 Beds



5 Baths



3 Car



0.38 Acre

## PROPERTY DETAILS

This stunning home at 423 Thorn Apple Way in Castle Pines, CO offers 5 bedrooms, 5 bathrooms, and 4,439 sq ft of living space. The grand entrance foyer features a towering ceiling and beautiful wood flooring. The main level includes a cozy living room with a fireplace. The kitchen is a chef's dream with stone countertops and stainless steel appliances. The primary bedroom offers a peaceful retreat with a raised ceiling. Outside, there's a snow-covered deck with an outdoor hangout area. The property also has a 3-car garage. Located in Castle Pines, this home is close to top-rated schools, parks, and shopping. Make it yours!



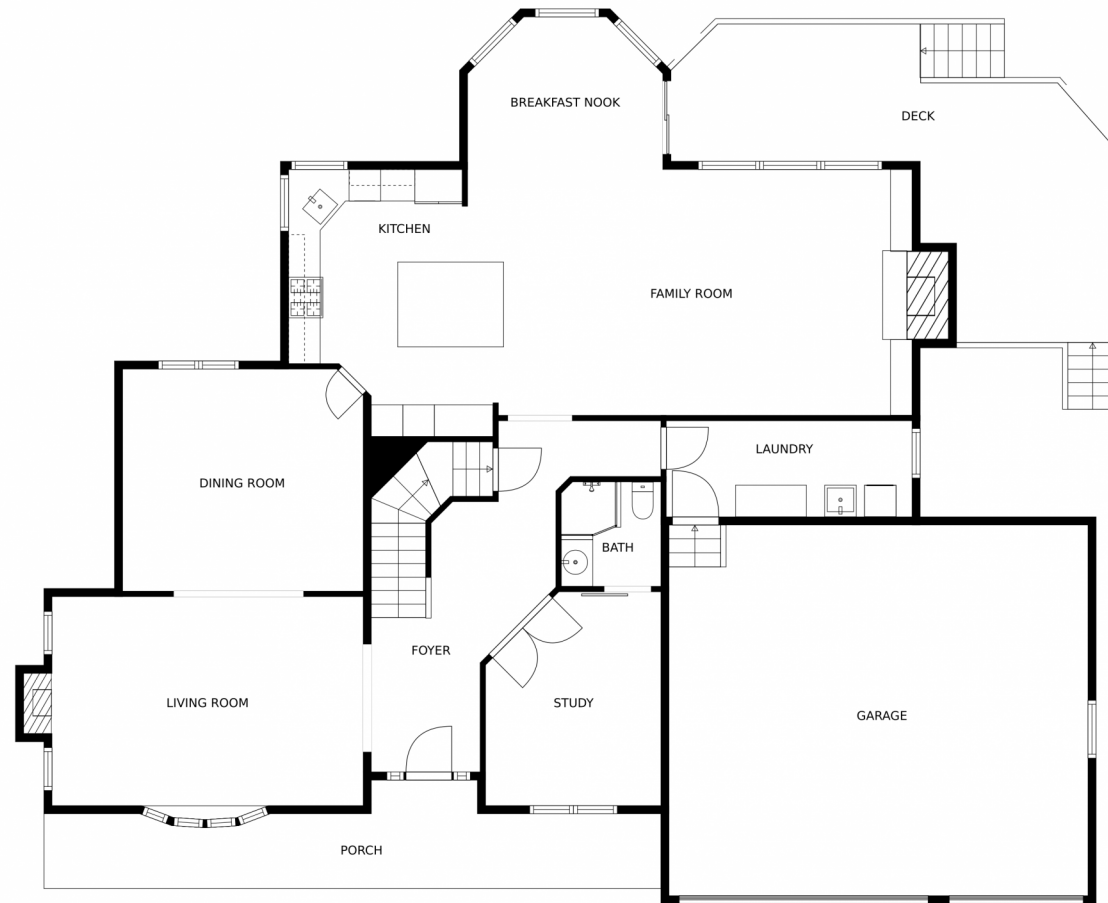
**Lisa Glynn**  
303-995-8065  
lisaglynn@theglynns.net



Scan code  
for more  
property  
details



423 Thorn Apple Way, Castle Pines, CO 80108 – Main Level



MEASUREMENTS CALCULATED BY V1Photos.com ARE DEEMED HIGHLY RELIABLE BUT NOT GUARANTEED.



Disclaimer: Sizes and Dimensions are Approximate, Actual May Vary.



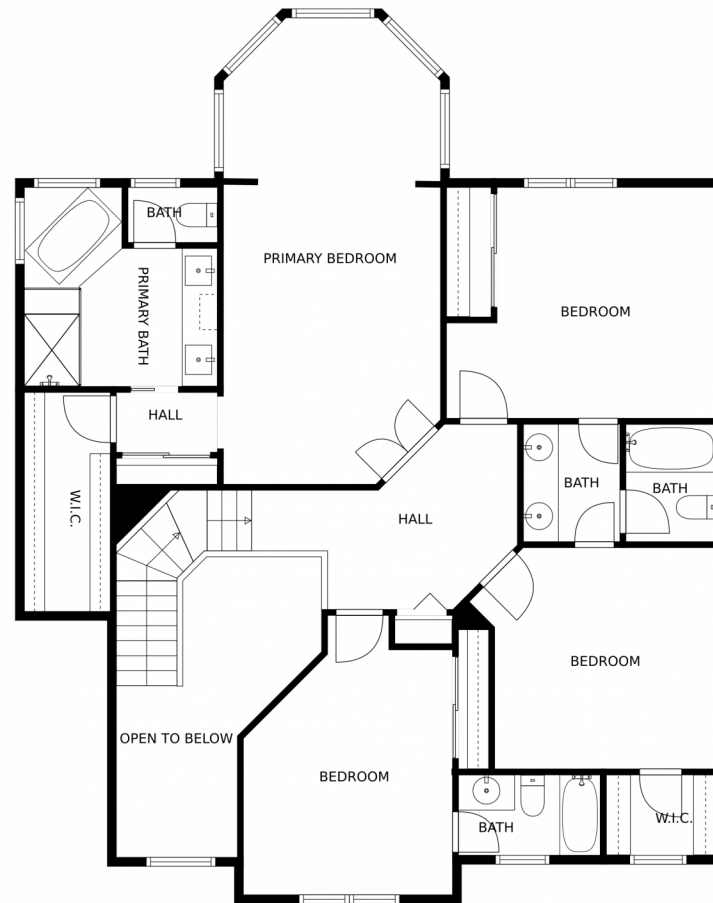
**Lisa Glynn**  
303-995-8065  
lisaglynn@theglynns.net



Scan code for more property details



423 Thorn Apple Way, Castle Pines, CO 80108 – Upper Level



MEASUREMENTS CALCULATED BY V1Photos.com ARE DEEMED HIGHLY RELIABLE BUT NOT GUARANTEED.



Disclaimer: Sizes and Dimensions are Approximate, Actual May Vary.



Lisa Glynn  
303-995-8065  
lisaglynn@theglynns.net



Scan code  
for more  
property  
details





MEASUREMENTS CALCULATED BY V1Photos.com ARE DEEMED HIGHLY RELIABLE BUT NOT GUARANTEED.



Disclaimer: Sizes and Dimensions are Approximate, Actual May Vary.



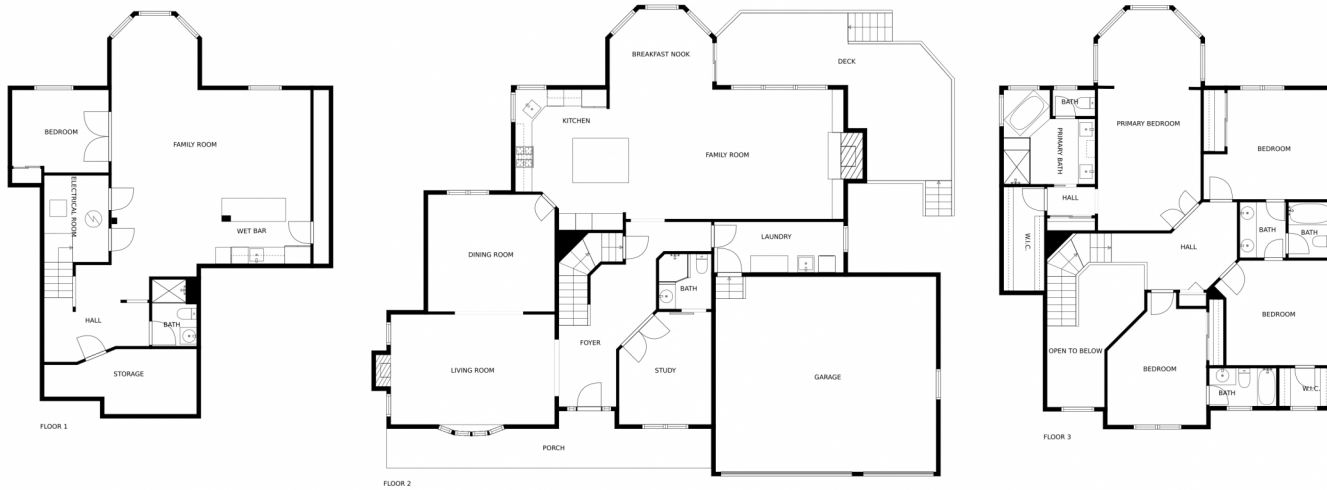
**Lisa Glynn**  
303-995-8065  
lisaglynn@theglynns.net

Scan code  
for more  
property  
details

A QR code with green borders, positioned next to a small icon of a smartphone displaying a green QR code on its screen.



# 423 Thorn Apple Way, Castle Pines, CO 80108 – All Levels



MEASUREMENTS CALCULATED BY V1Photos.com ARE DEEMED HIGHLY RELIABLE BUT NOT GUARANTEED.



Disclaimer: Sizes and Dimensions are Approximate, Actual May Vary.



**Lisa Glynn**  
303-995-8065  
lisaglynn@theglynns.net

