



2815 Echo Park Drive
 Castle Rock, CO 80104
 COMMUNITY: Crystal Valley

MLS # 4962338
 PRICE \$735,000



Single Family



4113 SQFT



4 Beds



2/1 Baths



2 Car



0.2 Acre

PROPERTY DETAILS

Welcome to your dream home in Crystal Valley, Castle Rock! This stunning two-story residence offers luxury, comfort, and potential. With four bedrooms, an office, and a loft, there's plenty of space for relaxation and work. The open kitchen with granite countertops and stainless steel appliances is perfect for entertaining. Step outside to the covered patio and enjoy your private oasis. The primary bathroom is a luxurious retreat with a large tub and renovated shower. The unfinished basement allows for customization. The landscaped yard adds to the home's curb appeal. The Crystal Valley community offers amenities like a clubhouse, pools, trails, and parks. This home is the perfect blend of luxury living and outdoor adventure. Don't miss out!



Michelle Cuscaden

303-250-3786

m.cuscaden30@gmail.com

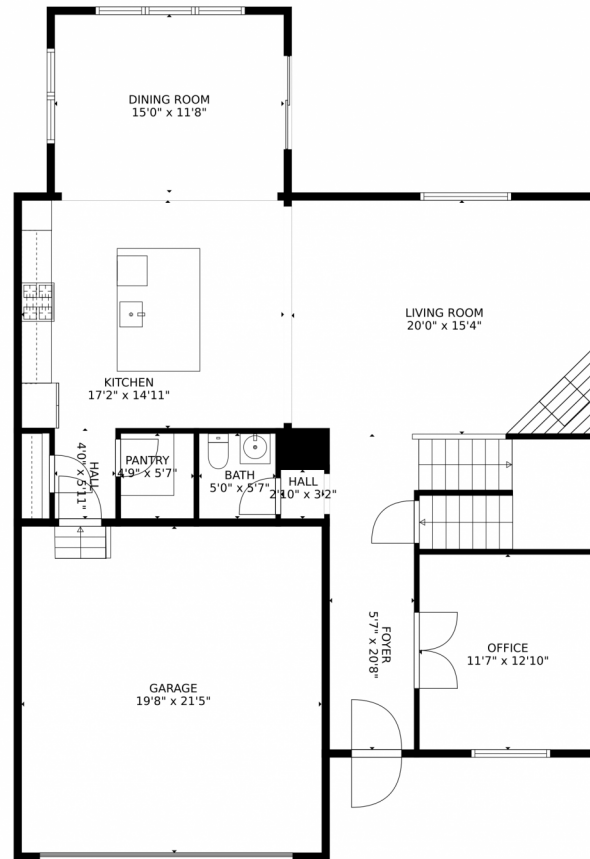
<https://michellecuscaden.myrealtyonegroup.com/>



Scan code
 for more
 property
 details



2815 Echo Park Drive, Castle Rock, CO 80104 – Main Level



TOTAL: 2612 sq. ft
Below Ground: 0 sq. ft, FLOOR 2: 1233 sq. ft, FLOOR 3: 1379 sq. ft
EXCLUDED AREAS: BASEMENT: 1233 sq. ft, GARAGE: 421 sq. ft
MEASUREMENTS CALCULATED BY V1Photos.com ARE DEEMED HIGHLY RELIABLE BUT NOT GUARANTEED.



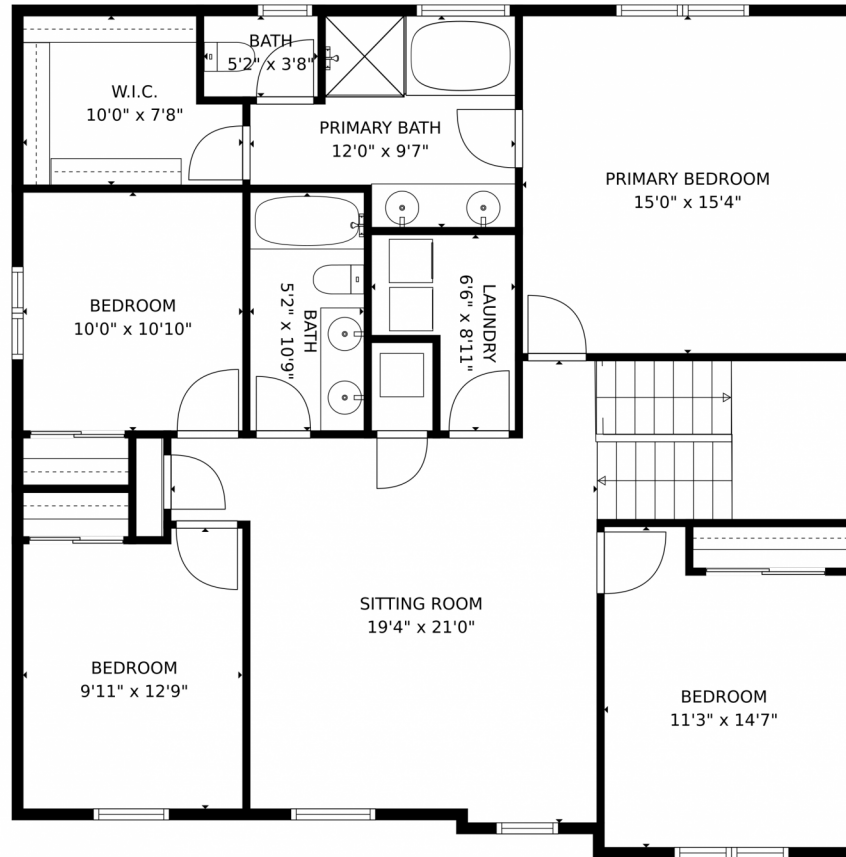
Disclaimer: Sizes and Dimensions are Approximate, Actual May Vary.



Michelle Cuscaden
303-250-3786
m.cuscaden30@gmail.com
<https://michellecuscaden.myrealtyonegroup.com/>



2815 Echo Park Drive, Castle Rock, CO 80104 – Upper Level



TOTAL: 2612 sq. ft
Below Ground: 0 sq. ft, FLOOR 2: 1233 sq. ft, FLOOR 3: 1379 sq. ft
EXCLUDED AREAS: BASEMENT: 1233 sq. ft, GARAGE: 421 sq. ft
MEASUREMENTS CALCULATED BY V1Photos.com ARE DEEMED HIGHLY RELIABLE BUT NOT GUARANTEED.



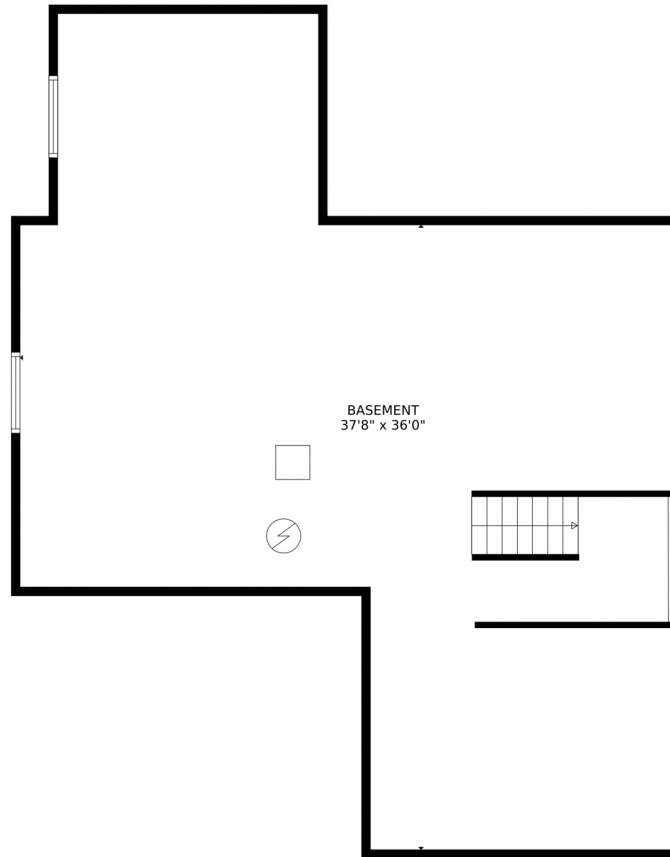
Disclaimer: Sizes and Dimensions are Approximate, Actual May Vary.



Michelle Cuscaden
303-250-3786
m.cuscaden30@gmail.com
<https://michellecuscaden.myrealtyonegroup.com/>



2815 Echo Park Drive, Castle Rock, CO 80104 – Lower Level



TOTAL: 2612 sq. ft
Below Ground: 0 sq. ft, FLOOR 2: 1233 sq. ft, FLOOR 3: 1379 sq. ft
EXCLUDED AREAS: BASEMENT: 1233 sq. ft, GARAGE: 421 sq. ft

MEASUREMENTS CALCULATED BY V1Photos.com ARE DEEMED HIGHLY RELIABLE BUT NOT GUARANTEED.



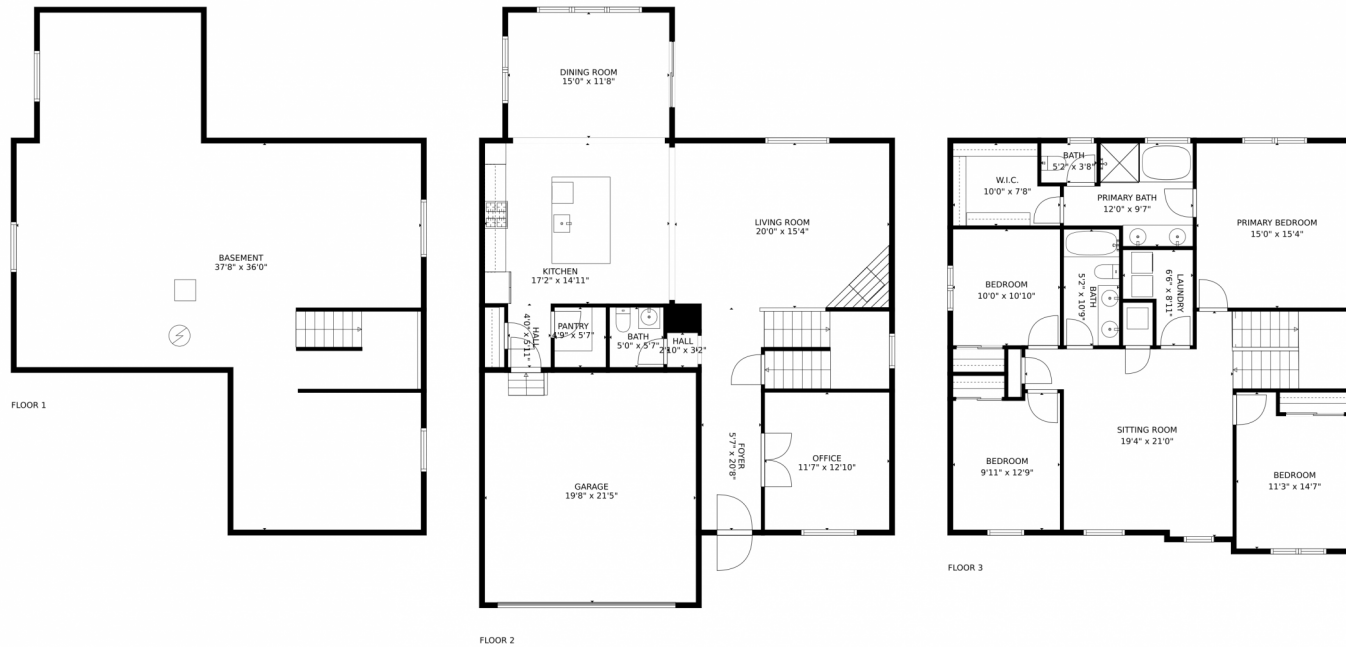
Disclaimer: Sizes and Dimensions are Approximate, Actual May Vary.



Michelle Cuscaden
303-250-3786
m.cuscaden30@gmail.com
<https://michellecuscaden.myrealtyonegroup.com/>



2815 Echo Park Drive, Castle Rock, CO 80104 – All Levels



TOTAL: 2612 sq. ft
Below Ground: 0 sq. ft, FLOOR 2: 1233 sq. ft, FLOOR 3: 1379 sq. ft
EXCLUDED AREAS: BASEMENT: 1233 sq. ft, GARAGE: 421 sq. ft

MEASUREMENTS CALCULATED BY V1Photos.com ARE DEEMED HIGHLY RELIABLE BUT NOT GUARANTEED.



Disclaimer: Sizes and Dimensions are Approximate, Actual May Vary.



Michelle Cuscaden
303-250-3786
m.cuscaden30@gmail.com
<https://michellecuscaden.myrealtyonegroup.com/>

