


3353 Krameria Street  
Denver, CO 80207  
COMMUNITY: Oakland




 Single Family

 2064 SQFT

 4 Beds

 2 Baths

 2 Car

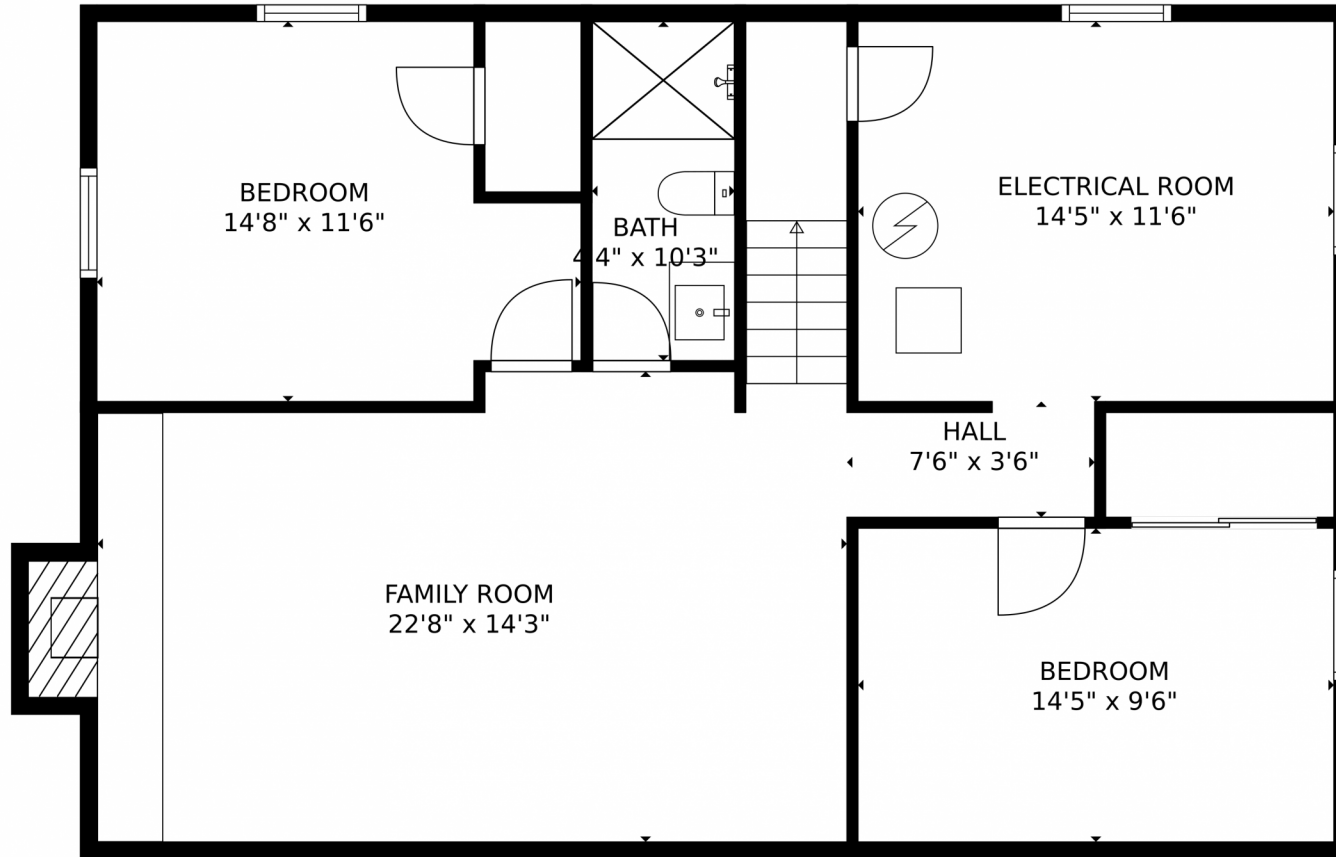
 0.14 Acre



**Kifle Leulseged**  
720-891-6979  
kleulseged@gmail.com



3353 Krameria Street, Denver, CO 80207 – Lower Level



**TOTAL: 1707 sq. ft**  
Below Ground: 749 sq. ft, FLOOR 2: 958 sq. ft  
EXCLUDED AREAS: UNDEFINED: 15 sq. ft, ELECTRICAL ROOM: 165 sq. ft, FIREPLACE: 7 sq. ft,  
STORAGE: 66 sq. ft, GARAGE: 395 sq. ft, PORCH: 88 sq. ft,  
PATIO: 363 sq. ft

MEASUREMENTS CALCULATED BY V1Photos.com ARE DEEMED HIGHLY RELIABLE BUT NOT GUARANTEED.



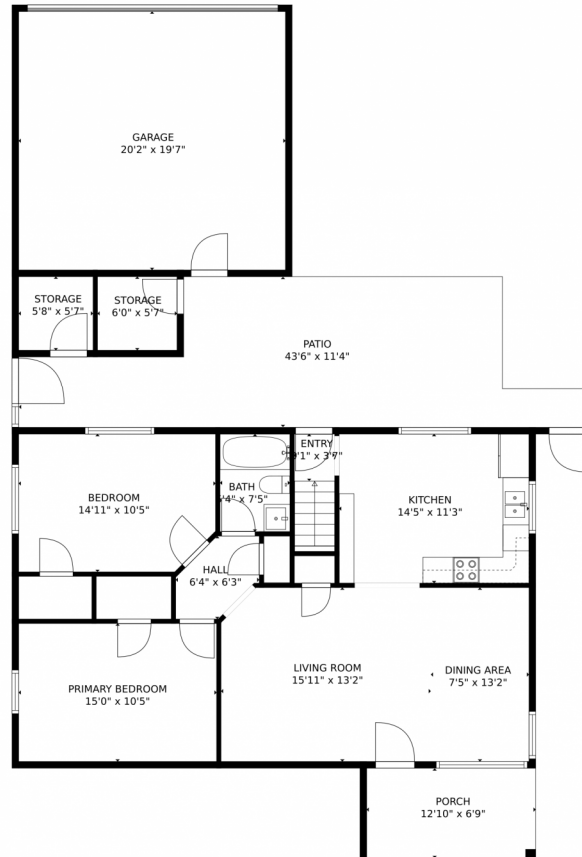
Disclaimer: Sizes and Dimensions are Approximate, Actual May Vary.



**Kifle Leulseged**  
720-891-6979  
kleulseged@gmail.com



# 3353 Krameria Street, Denver, CO 80207 – Main Level



**TOTAL: 1707 sq. ft**  
Below Ground: 749 sq. ft, FLOOR 2: 958 sq. ft  
EXCLUDED AREAS: UNDEFINED: 15 sq. ft, ELECTRICAL ROOM: 165 sq. ft, FIREPLACE: 7 sq. ft,  
STORAGE: 66 sq. ft, GARAGE: 395 sq. ft, PORCH: 88 sq. ft,  
PATIO: 363 sq. ft

MEASUREMENTS CALCULATED BY V1Photos.com ARE DEEMED HIGHLY RELIABLE BUT NOT GUARANTEED.



Disclaimer: Sizes and Dimensions are Approximate, Actual May Vary.



**Kifle Leulseged**  
720-891-6979  
kleulseged@gmail.com



# 3353 Krameria Street, Denver, CO 80207 – All Levels



**TOTAL: 1707 sq. ft**  
Below Ground: 749 sq. ft, FLOOR 2: 958 sq. ft  
EXCLUDED AREAS: UNDEFINED: 15 sq. ft, ELECTRICAL ROOM: 165 sq. ft, FIREPLACE: 7 sq. ft,  
STORAGE: 66 sq. ft, GARAGE: 395 sq. ft, PORCH: 88 sq. ft,  
PATIO: 363 sq. ft

MEASUREMENTS CALCULATED BY V1Photos.com ARE DEEMED HIGHLY RELIABLE BUT NOT GUARANTEED.



Disclaimer: Sizes and Dimensions are Approximate, Actual May Vary.



**Kifle Leulseged**  
720-891-6979  
kleulseged@gmail.com

