



 Condominium  2246 SQFT  2 Beds  2 Baths  2 Car

## PROPERTY DETAILS

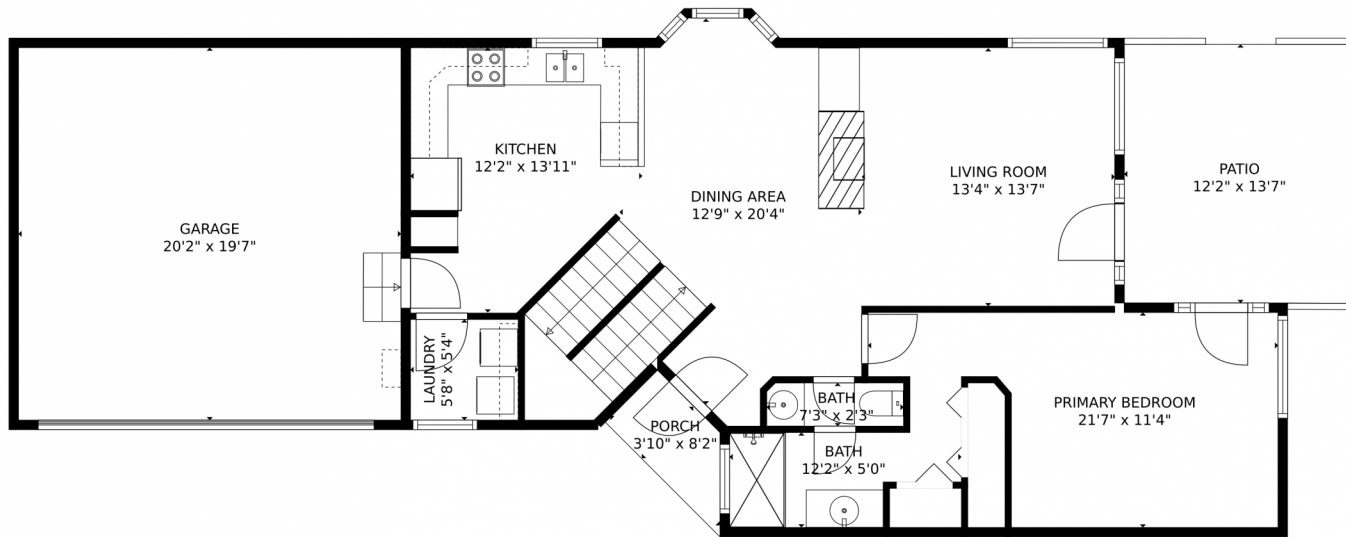
Rare San Marino Townhome with Main Floor Primary Suite and 2 Car Garage. Upgraded & Lovingly Cared For. Plantation Shutters, 6 Panel Doors. Great Kitchen with Upgraded Granite Counters, Newer Hardwood Floor & Stainless Steel Appliances. Vaulted Main Floor Primary Suite with Updated/Upgraded Primary Bath. Main Floor Laundry. Formal Dining. Family Room with Gas Fireplace & Soaring Vaulted Ceilings. Loft Overlooking Family Room. Nice Size Secondary Bedroom with Vaults & Full Bath. Large Office. Room to Grow in the Basement. Newer Windows & Custom Patio Doors. Great Patio Area for Relaxing & Enjoying. Community Pool. Steps From Standley Lake, Michael Northey Park, Little Dry Creek Trail, Apex Pickle Ball Courts & Simms Street Center.



**Eric Carlton**  
303-520-4444  
ericjcarlton@comcast.net



# 11355 West 84th Place, Arvada, CO 80005 – Main Floor



**TOTAL: 2296 sq. ft**  
Below Ground: 926 sq. ft, FLOOR 2: 935 sq. ft, FLOOR 3: 435 sq. ft  
EXCLUDED AREAS: GARAGE: 395 sq. ft, PATIO: 165 sq. ft, PORCH: 26 sq. ft,  
OPEN TO BELOW: 169 sq. ft  
MEASUREMENTS CALCULATED BY V1Photos.com ARE DEEMED HIGHLY RELIABLE BUT NOT GUARANTEED.



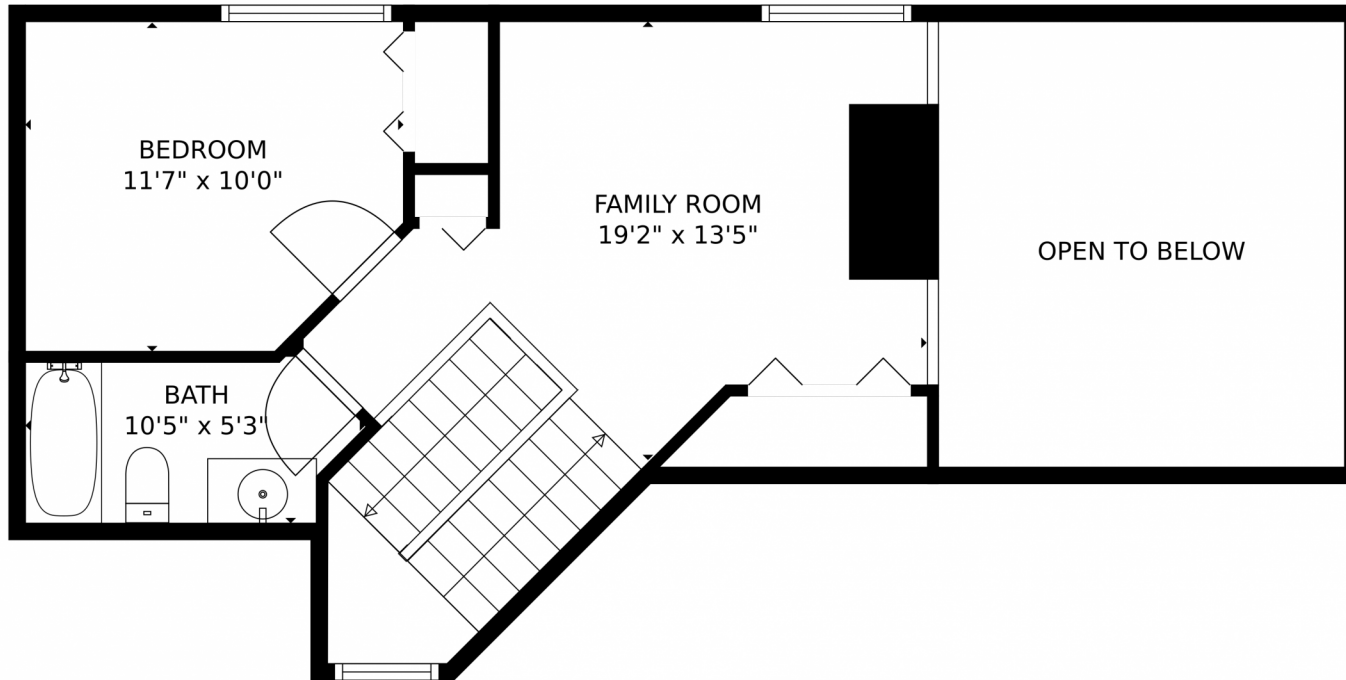
Disclaimer: Sizes and Dimensions are Approximate, Actual May Vary.



**Eric Carlton**  
303-520-4444  
ericjcarlton@comcast.net



11355 West 84th Place, Arvada, CO 80005 – Upper Level



**TOTAL: 2296 sq. ft**  
Below Ground: 926 sq. ft, FLOOR 2: 935 sq. ft, FLOOR 3: 435 sq. ft  
EXCLUDED AREAS: GARAGE: 395 sq. ft, PATIO: 165 sq. ft, PORCH: 26 sq. ft,  
OPEN TO BELOW: 169 sq. ft  
MEASUREMENTS CALCULATED BY V1Photos.com ARE DEEMED HIGHLY RELIABLE BUT NOT GUARANTEED.



Disclaimer: Sizes and Dimensions are Approximate, Actual May Vary.

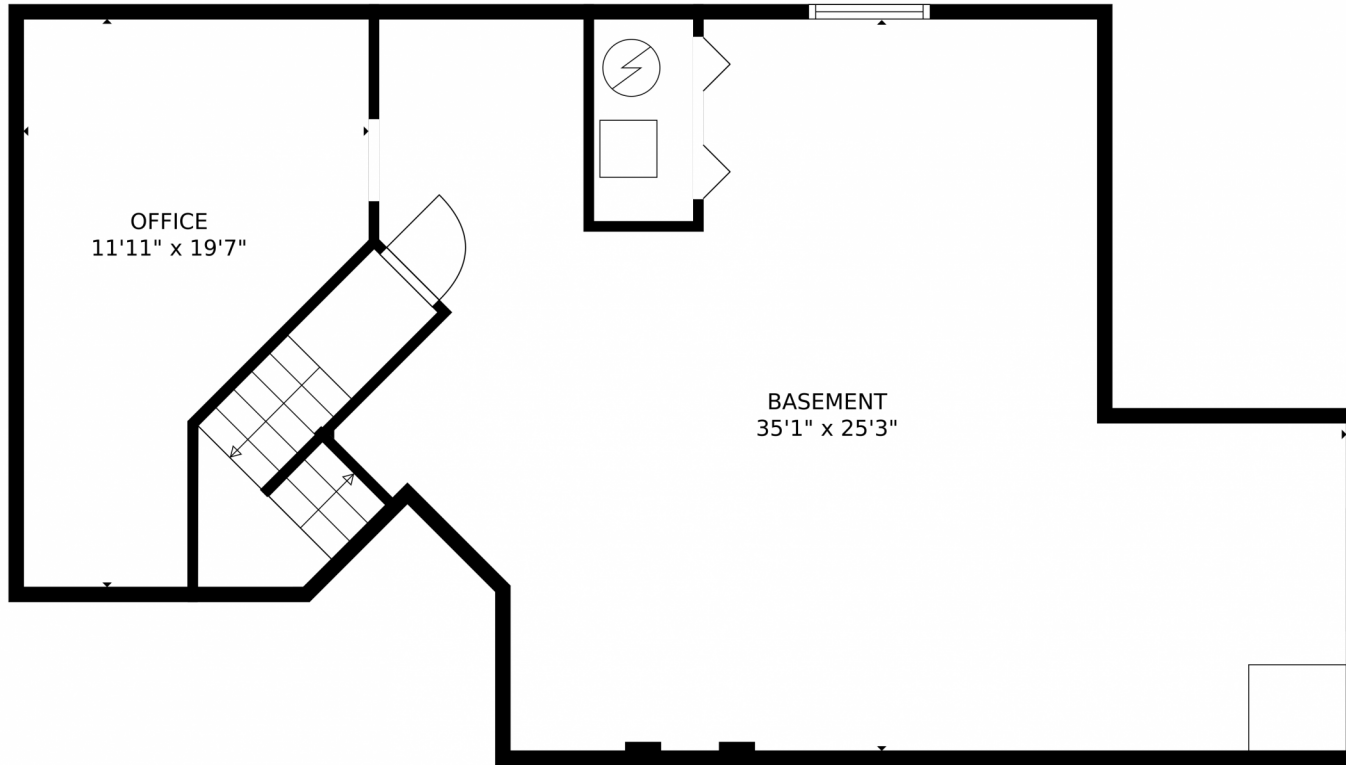


**Eric Carlton**  
303-520-4444  
ericjcarlton@comcast.net



Scan code  
for more  
property  
details

11355 West 84th Place, Arvada, CO 80005 – Lower Level



**TOTAL: 2296 sq. ft**  
Below Ground: 926 sq. ft, FLOOR 2: 935 sq. ft, FLOOR 3: 435 sq. ft  
EXCLUDED AREAS: GARAGE: 395 sq. ft, PATIO: 165 sq. ft, PORCH: 26 sq. ft,  
OPEN TO BELOW: 169 sq. ft  
MEASUREMENTS CALCULATED BY V1Photos.com ARE DEEMED HIGHLY RELIABLE BUT NOT GUARANTEED.



Disclaimer: Sizes and Dimensions are Approximate, Actual May Vary.



**Eric Carlton**  
303-520-4444  
ericjcarlton@comcast.net



Scan code  
for more  
property  
details

# 11355 West 84th Place, Arvada, CO 80005 – All Levels



**TOTAL: 2296 sq. ft**

Below Ground: 926 sq. ft, FLOOR 2: 935 sq. ft, FLOOR 3: 435 sq. ft  
EXCLUDED AREAS: GARAGE: 395 sq. ft, PATIO: 165 sq. ft, PORCH: 26 sq. ft,  
OPEN TO BELOW: 169 sq. ft

MEASUREMENTS CALCULATED BY V1Photos.com ARE DEEMED HIGHLY RELIABLE BUT NOT GUARANTEED.



Disclaimer: Sizes and Dimensions are Approximate, Actual May Vary.



**Eric Carlton**  
303-520-4444  
ericjcarlton@comcast.net

