





 Single Family
  3180 SQFT
  5 Beds
  3 Baths
  3 Car
  0.17 Acre

PROPERTY DETAILS

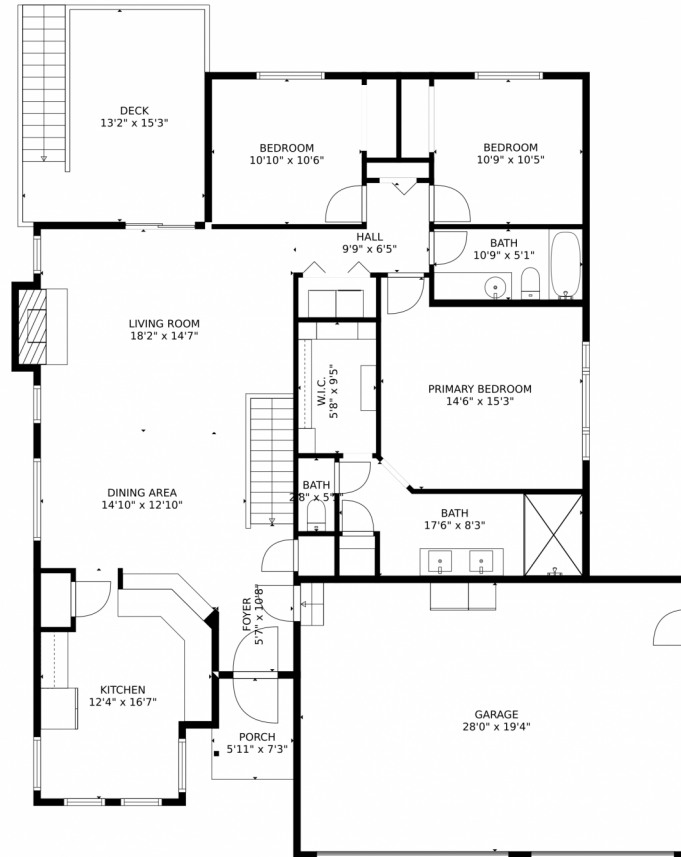
Welcome to this amazing property in Summerfield at Briargate. This spacious home offers 5 bedrooms, 3 bathrooms, and 3,180 square feet of living space. With a 3-car garage, there's plenty of room for vehicles and storage. The remodeled kitchen features stainless steel appliances, new countertops, and cabinets. The dining area is perfect for entertaining. The living room is cozy with wood flooring and a brick fireplace. The primary bedroom has a carpeted floor, ceiling fan, and a bathroom with dual vanities, a large shower, and a walk-in closet. The basement has 2 bedrooms and 1 bathroom. The outdoor area has a deck with a pergola, perfect for gatherings and enjoying mountain views. The fenced yard offers privacy and a safe space for children and pets. Located in Summerfield at Briargate, you'll have access to parks, schools, and shopping centers. Don't miss this opportunity to own a truly exceptional property in a desirable community.



Tina Kepenach
 719-291-4165
 info@phcmoves.com
<http://www.phcmoves.com>



Scan code
 for more
 property
 details



TOTAL: 2965 sq. ft
Below Ground: 1472 sq. ft, FLOOR 2: 1493 sq. ft
EXCLUDED AREAS: PATIO: 94 sq. ft, PORCH: 41 sq. ft, DECK: 198 sq. ft,
GARAGE: 543 sq. ft, FIREPLACE: 6 sq. ft

MEASUREMENTS CALCULATED BY V1Photos.com ARE DEEMED HIGHLY RELIABLE BUT NOT GUARANTEED.



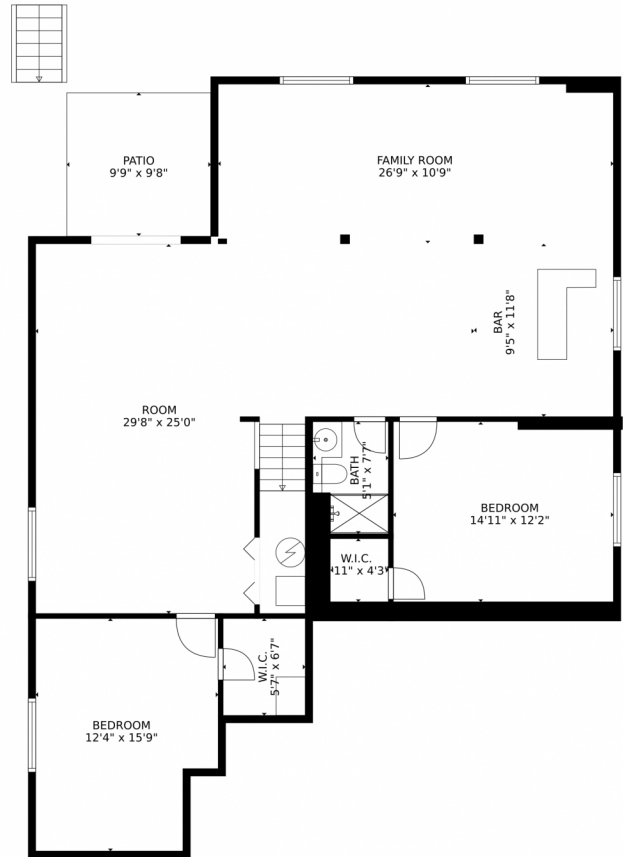
Disclaimer: Sizes and Dimensions are Approximate, Actual May Vary.



Tina Kepenach
719-291-4165
info@phcmoves.com
<http://www.phcmoves.com>



Scan code
for more
property
details



TOTAL: 2965 sq. ft
Below Ground: 1472 sq. ft, FLOOR 2: 1493 sq. ft
EXCLUDED AREAS: PATIO: 94 sq. ft, PORCH: 41 sq. ft, DECK: 198 sq. ft,
GARAGE: 543 sq. ft, FIREPLACE: 6 sq. ft

MEASUREMENTS CALCULATED BY V1Photos.com ARE DEEMED HIGHLY RELIABLE BUT NOT GUARANTEED.





Disclaimer: Sizes and Dimensions are Approximate, Actual May Vary.



Tina Kepenach
719-291-4165
info@phcmoves.com
<http://www.phcmoves.com>



Scan code for more property details





FLOOR 1

FLOOR 2

TOTAL: 2965 sq. ft
Below Ground: 1472 sq. ft, FLOOR 2: 1493 sq. ft
EXCLUDED AREAS: PATIO: 94 sq. ft, PORCH: 41 sq. ft, DECK: 198 sq. ft,
GARAGE: 543 sq. ft, FIREPLACE: 6 sq. ft

MEASUREMENTS CALCULATED BY V1Photos.com ARE DEEMED HIGHLY RELIABLE BUT NOT GUARANTEED.



Disclaimer: Sizes and Dimensions are Approximate, Actual May Vary.



Tina Kepenach
719-291-4165
info@phcmoves.com
<http://www.phcmoves.com>

