




3019 45th Avenue
Greeley, CO 80634
COMMUNITY: Gateway Estates

MLS
IR1004814
PRICE \$515,000



 Single Family

 2962 SQFT

 6 Beds

 3 Baths

 2 Car

 0.19 Acre



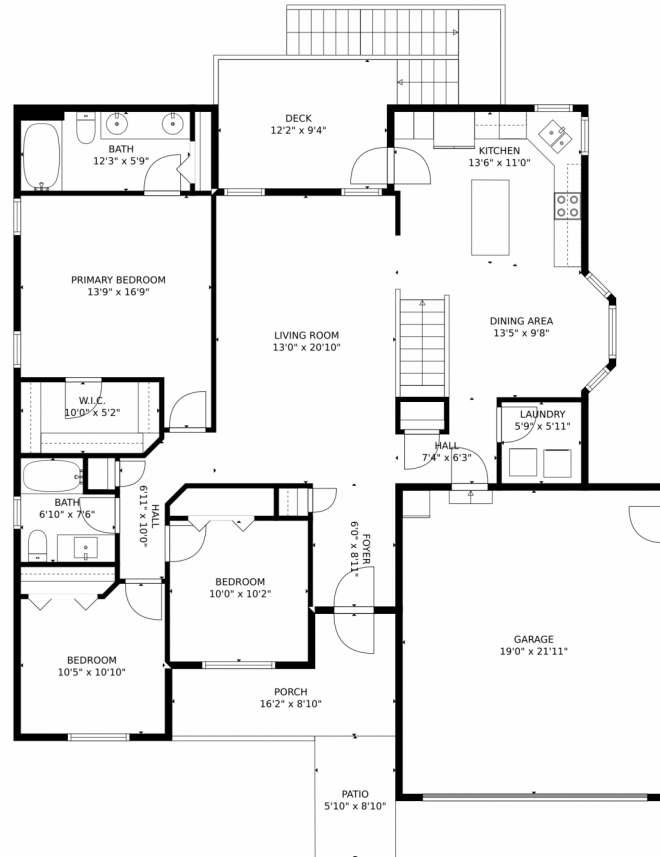
Brian Franzen
970-301-0266
brian@briansellsnoco.com



Scan code
for more
property
details



3019 45th Avenue, Greeley, CO 80634 – Main Level



TOTAL: 2542 sq. ft
Below Ground: 1143 sq. ft, FLOOR 2: 1399 sq. ft
EXCLUDED AREAS: STORAGE: 70 sq. ft, ELECTRICAL ROOM: 51 sq. ft, PATIO: 179 sq. ft,
GARAGE: 416 sq. ft, DECK: 116 sq. ft, PORCH: 102 sq. ft

MEASUREMENTS CALCULATED BY V1Photos.com ARE DEEMED HIGHLY RELIABLE BUT NOT GUARANTEED.



Disclaimer: Sizes and Dimensions are Approximate, Actual May Vary.



Brian Franzen
970-301-0266
brian@briansellsnoco.com



3019 45th Avenue, Greeley, CO 80634 – Lower Level



TOTAL: 2542 sq. ft
Below Ground: 1143 sq. ft, FLOOR 2: 1399 sq. ft
EXCLUDED AREAS: STORAGE: 70 sq. ft, ELECTRICAL ROOM: 51 sq. ft, PATIO: 179 sq. ft,
GARAGE: 416 sq. ft, DECK: 116 sq. ft, PORCH: 102 sq. ft

MEASUREMENTS CALCULATED BY V1Photos.com ARE DEEMED HIGHLY RELIABLE BUT NOT GUARANTEED.



Disclaimer: Sizes and Dimensions are Approximate, Actual May Vary.



Brian Franzen
970-301-0266
brian@briansellsnoco.com



3019 45th Avenue, Greeley, CO 80634 – All Levels



FLOOR 1

FLOOR 2

TOTAL: 2542 sq. ft
 Below Ground: 1143 sq. ft, FLOOR 2: 1399 sq. ft
 EXCLUDED AREAS: STORAGE: 70 sq. ft, ELECTRICAL ROOM: 51 sq. ft, PATIO: 179 sq. ft,
 GARAGE: 416 sq. ft, DECK: 116 sq. ft, PORCH: 102 sq. ft

MEASUREMENTS CALCULATED BY V1Photos.com ARE DEEMED HIGHLY RELIABLE BUT NOT GUARANTEED.



Disclaimer: Sizes and Dimensions are Approximate, Actual May Vary.



Brian Franzen
 970-301-0266
 brian@briansellsnoco.com



Scan code
 for more
 property
 details

