



17546 East Wesley Place
Aurora, CO 80013



Single Family



2703 SQFT

PROPERTY DETAILS

Welcome to 17546 East Wesley Place in Aurora, CO. This single-family property offers a spacious interior with 2703 sqft of living space. It features a variety of rooms, each thoughtfully designed. The dining area is elegant with light carpet and a textured ceiling. The kitchen is tastefully designed with a backsplash, stainless steel appliances, and light tile flooring. The family room has a high ceiling, light carpet, and a cozy brick fireplace. The bedrooms offer comfort and privacy with textured ceilings, light-colored carpet, and ample natural light. Outside, there is a deck and patio, perfect for outdoor activities. The fenced yard provides privacy and a safe space for children and pets. The property also includes a garage for parking and storage. Located in a desirable community, this property offers a peaceful neighborhood with nearby amenities. Don't miss this opportunity!



Alison Kaufman

203-981-4337

ASKAlisonK@gmail.com

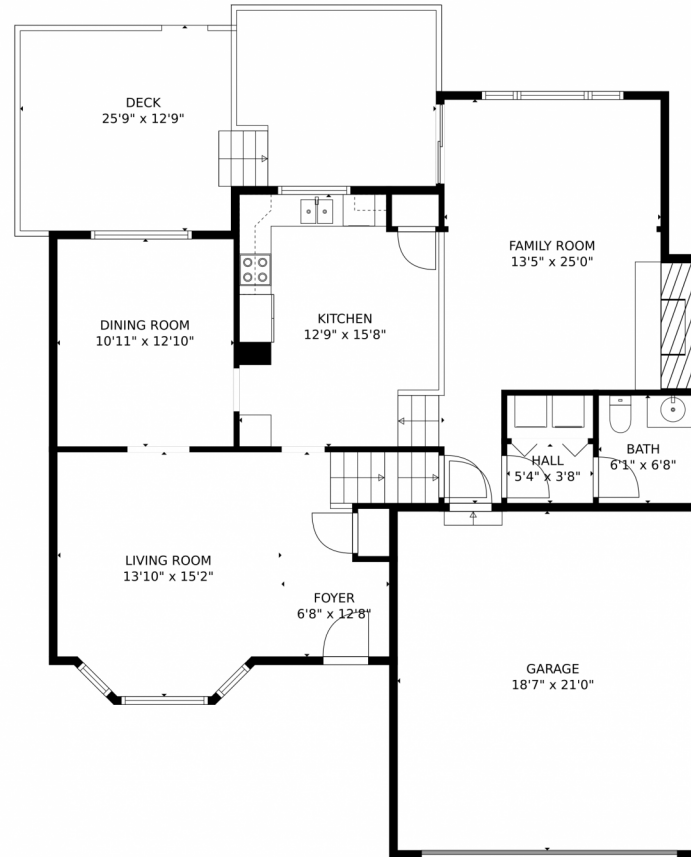
<https://www.askalisonk.com>



Scan code
for more
property
details



17546 East Wesley Place, Aurora, CO 80013 – Main Level



TOTAL: 2527 sq. ft
Below Ground: 534 sq. ft, FLOOR 2: 1014 sq. ft, FLOOR 3: 979 sq. ft
EXCLUDED AREAS: STORAGE: 62 sq. ft, ELECTRICAL ROOM: 19 sq. ft, GARAGE: 390 sq. ft,
DECK: 316 sq. ft, OPEN TO BELOW: 356 sq. ft

MEASUREMENTS CALCULATED BY V1Photos.com ARE DEEMED HIGHLY RELIABLE BUT NOT GUARANTEED.



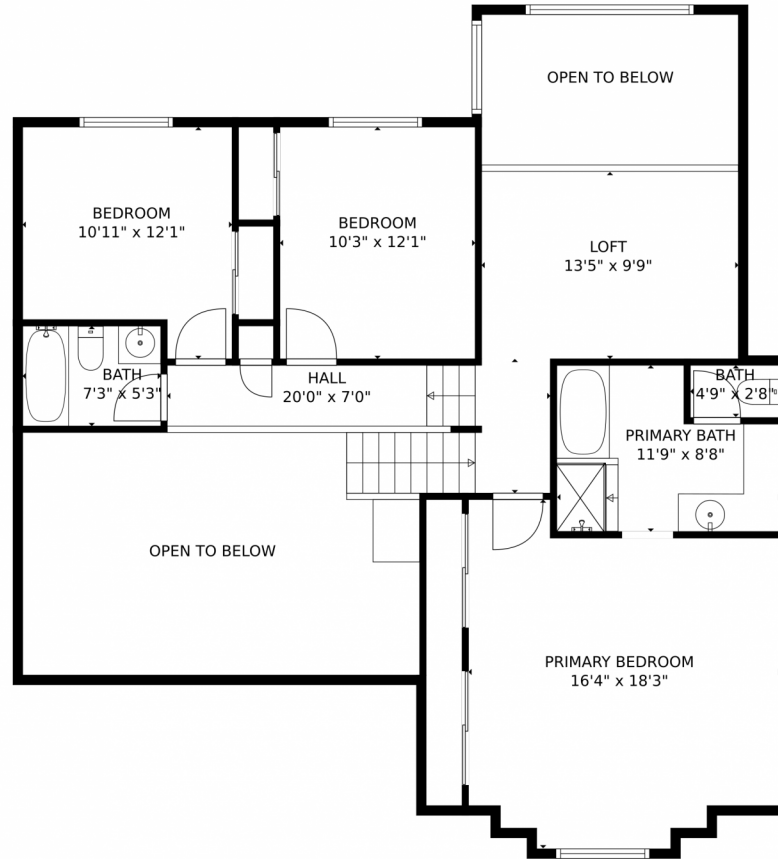
Disclaimer: Sizes and Dimensions are Approximate, Actual May Vary.



Alison Kaufman
203-981-4337
ASKAlisonK@gmail.com
<https://www.askalisonk.com>



17546 East Wesley Place, Aurora, CO 80013 – Upper Level



TOTAL: 2527 sq. ft
Below Ground: 534 sq. ft, FLOOR 2: 1014 sq. ft, FLOOR 3: 979 sq. ft
EXCLUDED AREAS: STORAGE: 62 sq. ft, ELECTRICAL ROOM: 19 sq. ft, GARAGE: 390 sq. ft,
DECK: 316 sq. ft, OPEN TO BELOW: 356 sq. ft

MEASUREMENTS CALCULATED BY V1Photos.com ARE DEEMED HIGHLY RELIABLE BUT NOT GUARANTEED.



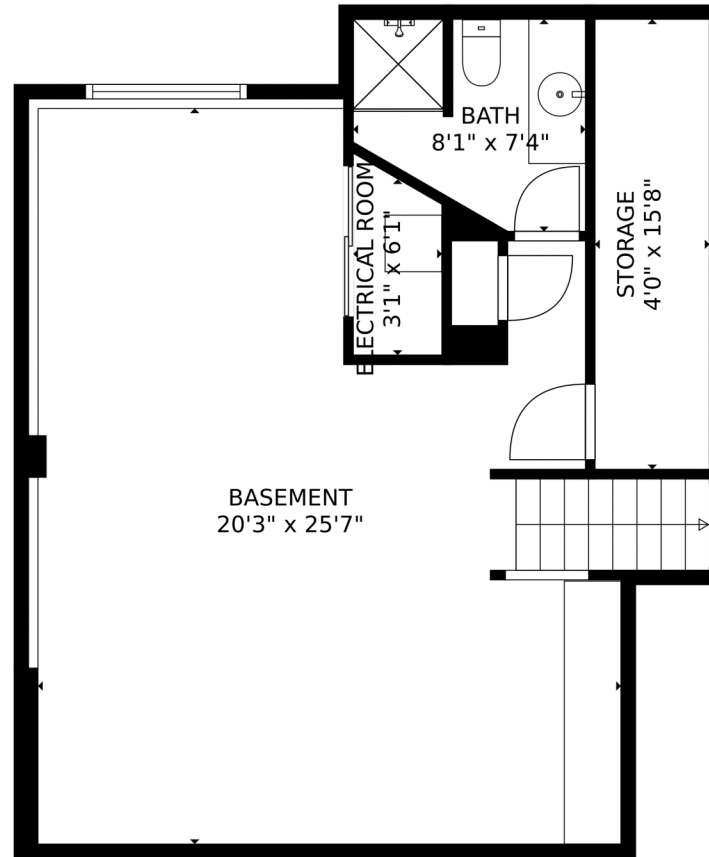
Disclaimer: Sizes and Dimensions are Approximate, Actual May Vary.



Alison Kaufman
203-981-4337
ASKAlisonK@gmail.com
<https://www.askalisonk.com>



17546 East Wesley Place, Aurora, CO 80013 – Lower Level



TOTAL: 2527 sq. ft
Below Ground: 534 sq. ft, FLOOR 2: 1014 sq. ft, FLOOR 3: 979 sq. ft
EXCLUDED AREAS: STORAGE: 62 sq. ft, ELECTRICAL ROOM: 19 sq. ft, GARAGE: 390 sq. ft,
DECK: 316 sq. ft, OPEN TO BELOW: 356 sq. ft

MEASUREMENTS CALCULATED BY V1Photos.com ARE DEEMED HIGHLY RELIABLE BUT NOT GUARANTEED.



Disclaimer: Sizes and Dimensions are Approximate, Actual May Vary.



Alison Kaufman
203-981-4337
ASKAlisonK@gmail.com
<https://www.askalisonk.com>



Scan code
for more
property
details

17546 East Wesley Place, Aurora, CO 80013 – All Levels



TOTAL: 2527 sq. ft
Below Ground: 534 sq. ft, FLOOR 2: 1014 sq. ft, FLOOR 3: 979 sq. ft
EXCLUDED AREAS: STORAGE: 62 sq. ft, ELECTRICAL ROOM: 19 sq. ft, GARAGE: 390 sq. ft,
DECK: 316 sq. ft, OPEN TO BELOW: 356 sq. ft

MEASUREMENTS CALCULATED BY V1Photos.com ARE DEEMED HIGHLY RELIABLE BUT NOT GUARANTEED.



Disclaimer: Sizes and Dimensions are Approximate, Actual May Vary.



Alison Kaufman
203-981-4337
ASKAlisonK@gmail.com
<https://www.askalisonk.com>



Scan code
for more
property
details

