

 Single Family  1628 SQFT  3 Beds  2 Baths  0.26 Acre

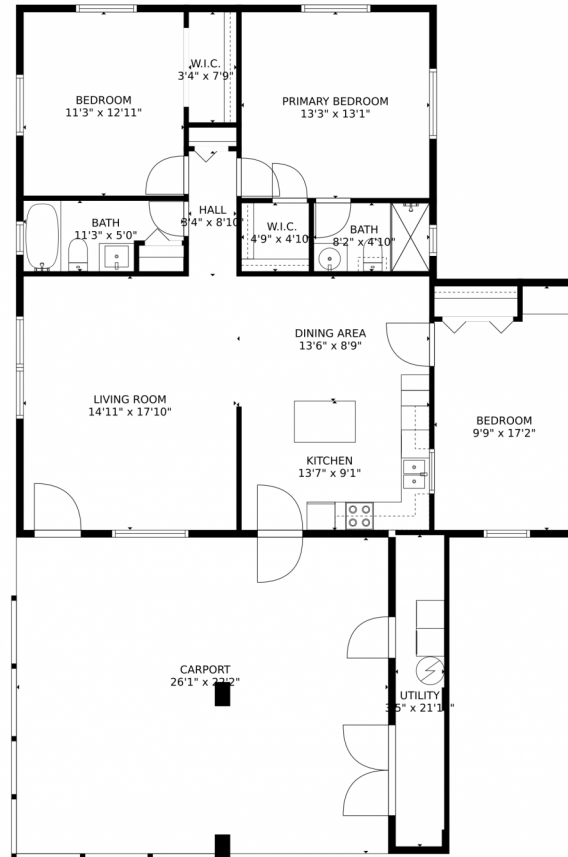
PROPERTY DETAILS

Escape to paradise in this charming 3-bedroom, 2-bathroom home in Palm City. With a prime location backing up to a nature preserve, enjoy tranquility and stunning views. Situated in the picturesque community of Palm City, immerse yourself in Florida's natural beauty. Impact Glass Windows, New Septic & Drain Field, Dead End Street.



Kim Marie Perry
561-402-9489
kimsellsu@outlook.com
<https://kimsellsu.baronrealestateco.com/>





TOTAL: 1289 sq. ft
FLOOR 1: 1289 sq. ft
EXCLUDED AREAS: CARPORT: 582 sq. ft

MEASUREMENTS CALCULATED BY V1Photos.com ARE DEEMED HIGHLY RELIABLE BUT NOT GUARANTEED.



Disclaimer: Sizes and Dimensions are Approximate, Actual May Vary.



Kim Marie Perry

561-402-9489

kimsellsu@outlook.com

<https://kimsellsu.baronrealestateco.com/>



Scan code
for more
property
details

