

Don't miss the great opportunity to own this beautiful home in Greenwood Village!



9628 East Maplewood Avenue, Greenwood Village, CO 80111 - all levels



-  Single Family
-  4206 SQFT
-  5 Beds
-  4/1 Baths
-  3 Car
-  0.16 Acre

## PROPERTY DETAILS

Nestled in a serene cul-de-sac of Huntington Pines, a prestigious neighborhood in Greenwood Village, this beautiful home offers a tranquil setting for your family to grow and thrive. As you step into the home, a grand circular wrought iron spiral staircase greets you, setting the tone for the elegant and inviting atmosphere within. To the left, the high-ceiling living room with the first of four fireplaces in the home offers a cozy space for relaxation, while the family room to the right provides its own fireplace and a welcoming area for quality time with loved ones. The vaulted ceiling and newly updated sliding glass door in the family room create a bright and airy ambiance, seamlessly connecting the indoor space to the Travertine patio and mature landscaping outside. The chef's gourmet kitchen is equipped with a cooktop, double ovens, refrigerator, microwave, dishwasher, and a hot water dispenser. The long bar, eat-in kitchen, and dining nook is perfect for intimate family meals. Main-floor laundry room with a utility sink and a dedicated laundry basket area. Upstairs, an airy balcony enclosed in wrought iron



**Litong Li**  
303-591-8903  
litong@litingrealty.com



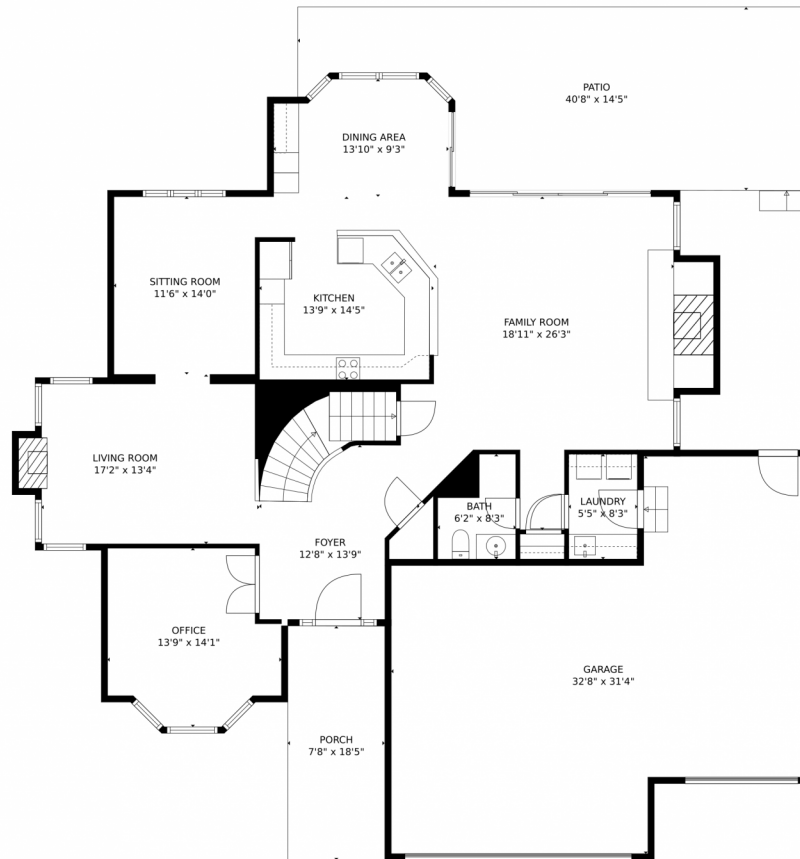
leads to four bedrooms. Primary bedroom featuring a five-piece bathroom set with tiled, arched Mediterranean-style shower and fireplace separating the bathroom and bedroom. Bedrooms two and three offer extended spaces and share a bathroom through separate doors. Bedroom four offers the added privacy of its own bathroom. Downstairs, the elegant basement level features an additional living room with surround sound entertainment, a full bedroom and full bathroom. Plus a separate storage space housing an upgraded HVAC system and whole house humidifier. Updated new lighting fixtures and Lutron Smart switches throughout. New water heater. The neighborhood is located just minutes away from parks, trails, restaurants, access to major freeways, and some of the best schools in Colorado. Shopping and entertainment are 5 minutes away.



**Litong Li**  
303-591-8903  
litong@litongrealty.com



# 9628 East Maplewood Circle, Greenwood Village, CO 80111 — Main Level



**TOTAL: 3744 sq. ft**  
Below Ground: 676 sq. ft, FLOOR 2: 1667 sq. ft, FLOOR 3: 1401 sq. ft  
EXCLUDED AREAS: BASEMENT: 333 sq. ft, GARAGE: 778 sq. ft, PORCH: 142 sq. ft,  
PATIO: 479 sq. ft, FIREPLACE: 5 sq. ft, OPEN TO BELOW: 451 sq. ft  
MEASUREMENTS CALCULATED BY V1Photos.com ARE DEEMED HIGHLY RELIABLE BUT NOT GUARANTEED.



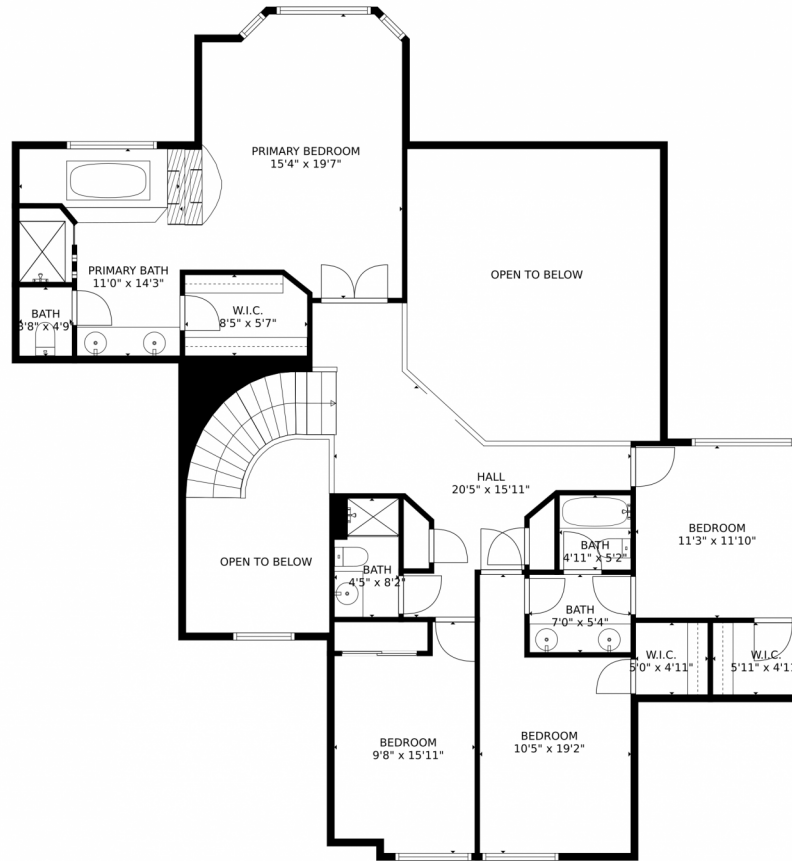
Disclaimer: Sizes and Dimensions are Approximate, Actual May Vary.



**Litng Li**  
303-591-8903  
litng@litngrealty.com



9628 East Maplewood Circle, Greenwood Village, CO 80111 — Upper Level



**TOTAL: 3744 sq. ft**  
Below Ground: 676 sq. ft, FLOOR 2: 1667 sq. ft, FLOOR 3: 1401 sq. ft  
EXCLUDED AREAS: BASEMENT: 333 sq. ft, GARAGE: 778 sq. ft, PORCH: 142 sq. ft,  
PATIO: 479 sq. ft, FIREPLACE: 5 sq. ft, OPEN TO BELOW: 451 sq. ft  
MEASUREMENTS CALCULATED BY V1Photos.com ARE DEEMED HIGHLY RELIABLE BUT NOT GUARANTEED.



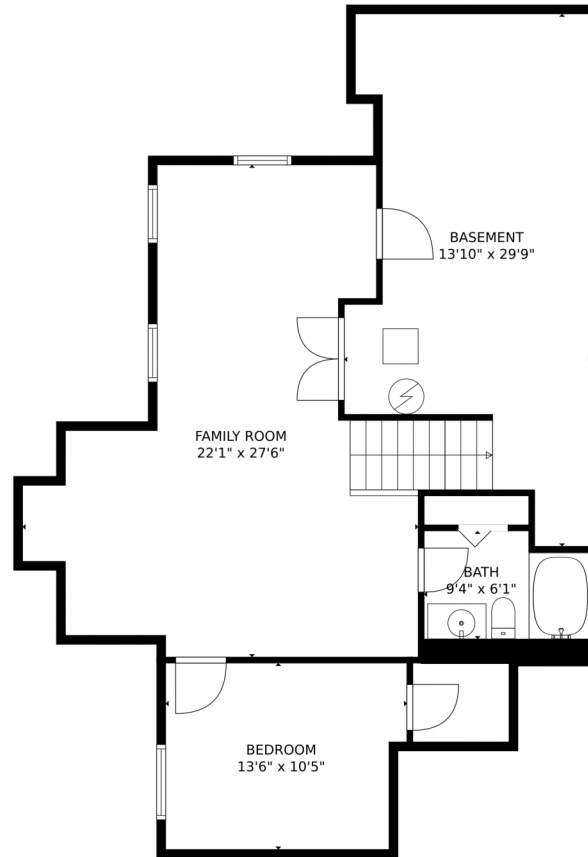
Disclaimer: Sizes and Dimensions are Approximate, Actual May Vary.



**Liting Li**  
303-591-8903  
liting@litingrealty.com



9628 East Maplewood Circle, Greenwood Village, CO 80111 — Lower Level



**TOTAL: 3744 sq. ft**  
Below Ground: 676 sq. ft, FLOOR 2: 1667 sq. ft, FLOOR 3: 1401 sq. ft  
EXCLUDED AREAS: BASEMENT: 333 sq. ft, GARAGE: 778 sq. ft, PORCH: 142 sq. ft,  
PATIO: 479 sq. ft, FIREPLACE: 5 sq. ft, OPEN TO BELOW: 451 sq. ft  
MEASUREMENTS CALCULATED BY V1Photos.com ARE DEEMED HIGHLY RELIABLE BUT NOT GUARANTEED.



Disclaimer: Sizes and Dimensions are Approximate, Actual May Vary.



**Litng Li**  
303-591-8903  
litng@litngrealty.com

