

7845 Grady Circle
Castle Rock, CO 80108
COMMUNITY: Cobblestone Ranch

MLS # 8173166
PRICE \$640,000



 Single Family  3890 SQFT  3 Beds  2 Baths  3 Car  0.15 Acre

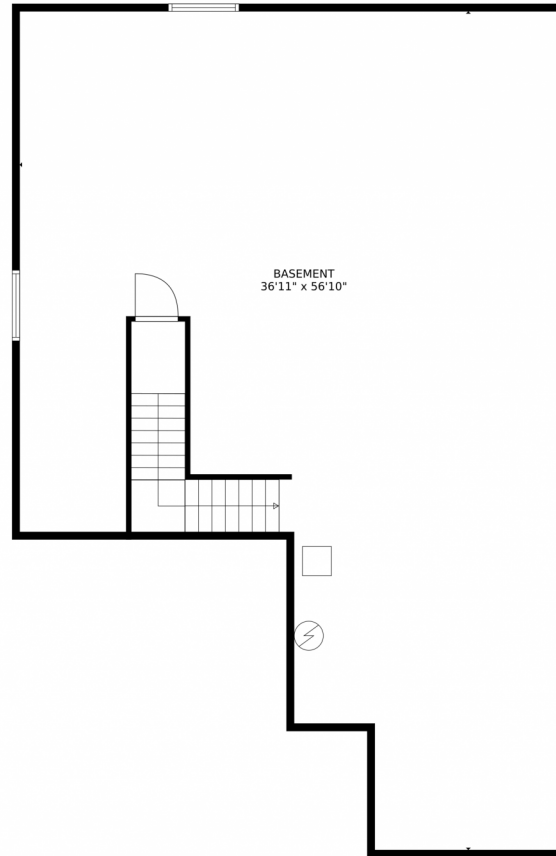
PROPERTY DETAILS

Welcome to your dream ranch home in the serene community of Cobblestone Ranch in Castle Rock! This open floor plan connects the bedrooms, laundry, living, dining, and kitchen areas, creating a perfect hub for relaxation and entertainment. The living room features a gas fireplace and large windows for natural light. The gourmet kitchen boasts granite countertops, sleek appliances, and a spacious island. There's a versatile bonus room that can be transformed to suit your needs. The primary suite has ample space and a private ensuite bath. Two additional bedrooms offer cozy accommodations. The full unfinished basement offers endless potential for additional living areas. Outside, enjoy a private oasis with a trex deck and scenic views. This community offers great trails, parks, pool, and tennis courts. Check it out!



Michelle Cuscaden
303-250-3786
m.cuscaden30@gmail.com
<https://michellecuscaden.myrealtyonegroup.com/>





TOTAL: 1798 sq. ft
Below Ground: 0 sq. ft, FLOOR 2: 1798 sq. ft
EXCLUDED AREAS: BASEMENT: 1651 sq. ft, GARAGE: 608 sq. ft, PORCH: 18 sq. ft,
DECK: 148 sq. ft, FIREPLACE: 5 sq. ft

MEASUREMENTS CALCULATED BY V1Photos.com ARE DEEMED HIGHLY RELIABLE BUT NOT GUARANTEED.



Disclaimer: Sizes and Dimensions are Approximate, Actual May Vary.



Michelle Cuscaden

303-250-3786

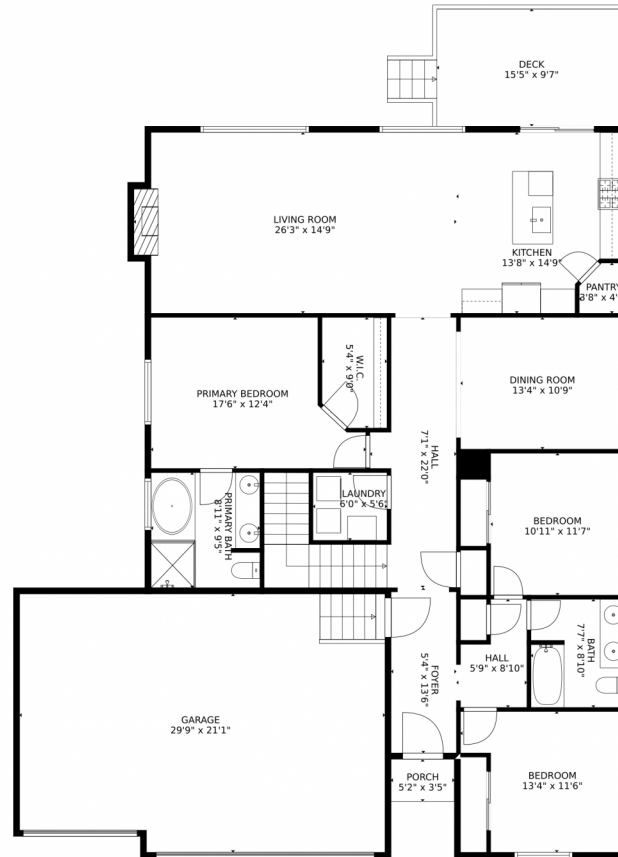
m.cuscaden30@gmail.com

<https://michellecuscaden.myrealtyonegroup.com/>



Scan code
for more
property
details





TOTAL: 1798 sq. ft
Below Ground: 0 sq. ft, FLOOR 2: 1798 sq. ft
EXCLUDED AREAS: BASEMENT: 1651 sq. ft, GARAGE: 608 sq. ft, PORCH: 18 sq. ft,
DECK: 148 sq. ft, FIREPLACE: 5 sq. ft

MEASUREMENTS CALCULATED BY V1Photos.com ARE DEEMED HIGHLY RELIABLE BUT NOT GUARANTEED.



Disclaimer: Sizes and Dimensions are Approximate, Actual May Vary.

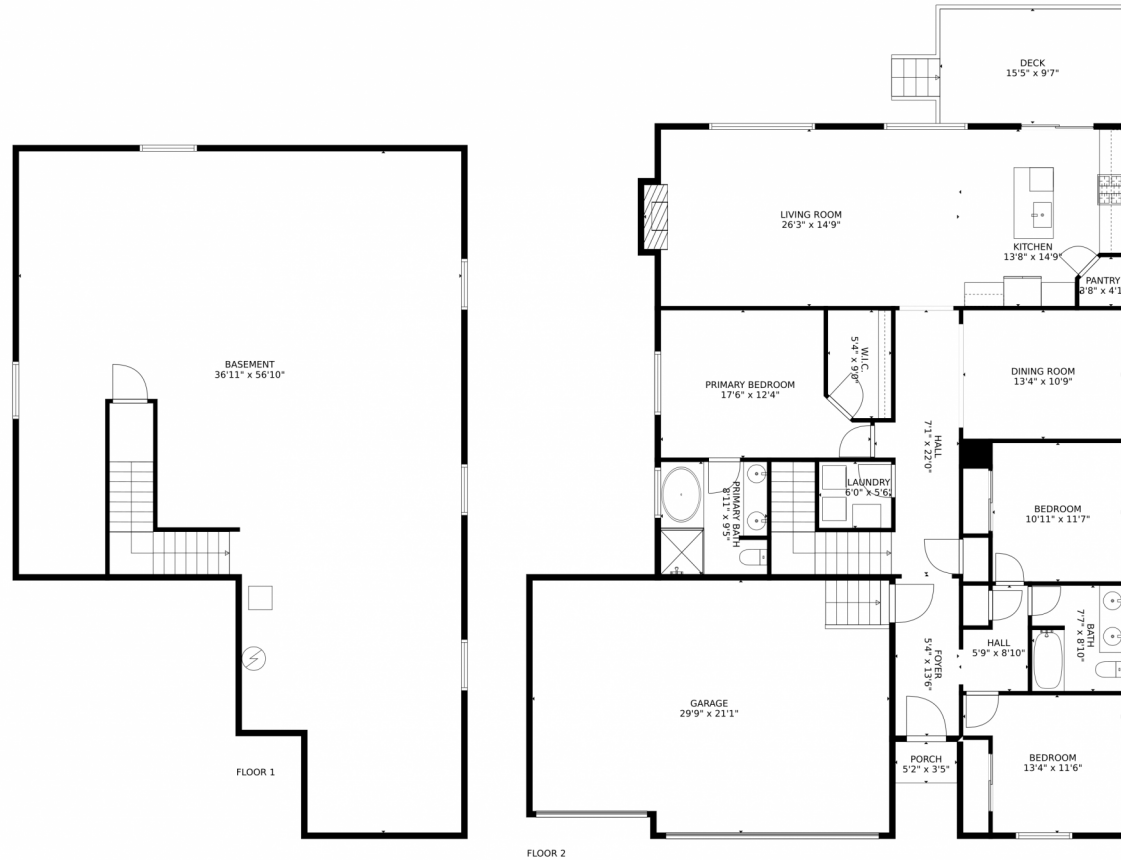


Michelle Cuscaden
303-250-3786
m.cuscaden30@gmail.com
<https://michellecuscaden.myrealtyonegroup.com/>



Scan code
for more
property
details





TOTAL: 1798 sq. ft
Below Ground: 0 sq. ft, FLOOR 2: 1798 sq. ft
EXCLUDED AREAS: BASEMENT: 1651 sq. ft, GARAGE: 608 sq. ft, PORCH: 18 sq. ft,
DECK: 148 sq. ft, FIREPLACE: 5 sq. ft
MEASUREMENTS CALCULATED BY V1Photos.COM ARE DEEMED HIGHLY RELIABLE BUT NOT GUARANTEED.



Disclaimer: Sizes and Dimensions are Approximate, Actual May Vary.



Michelle Cuscaden
303-250-3786
m.cuscaden30@gmail.com
<https://michellecuscaden.myrealtyonegroup.com/>



Scan code
for more
property
details

