




 Single Family

 1679 SQFT

 2 Beds

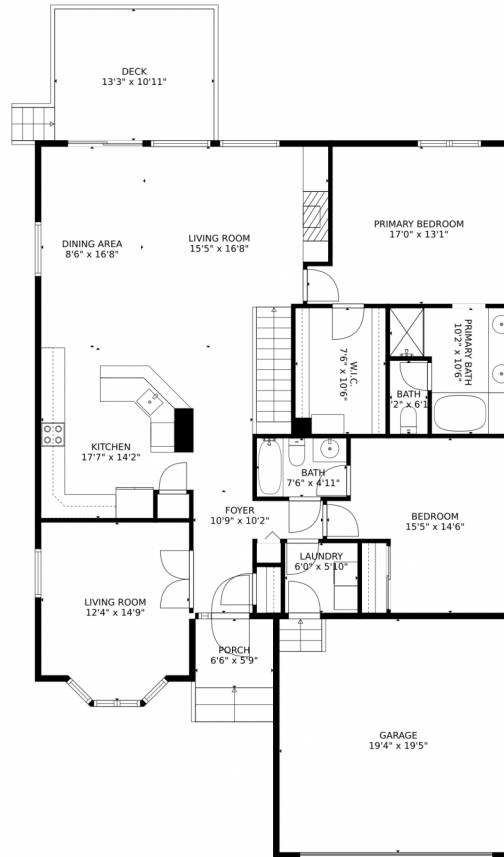
 2 Baths

 2 Car

Moon Zhao
720-935-2368
themannagroupcolorado@gmail.com



3239 Honeysuckle Court, Fort Collins, CO 80521 – Main Level



TOTAL: 1591 sq. ft
Below Ground: 0 sq. ft, FLOOR 2: 1591 sq. ft
EXCLUDED AREAS: BASEMENT: 1559 sq. ft, GARAGE: 375 sq. ft, PORCH: 55 sq. ft,
DECK: 154 sq. ft

MEASUREMENTS CALCULATED BY V1Photos.com ARE DEEMED HIGHLY RELIABLE BUT NOT GUARANTEED.



Disclaimer: Sizes and Dimensions are Approximate, Actual May Vary.

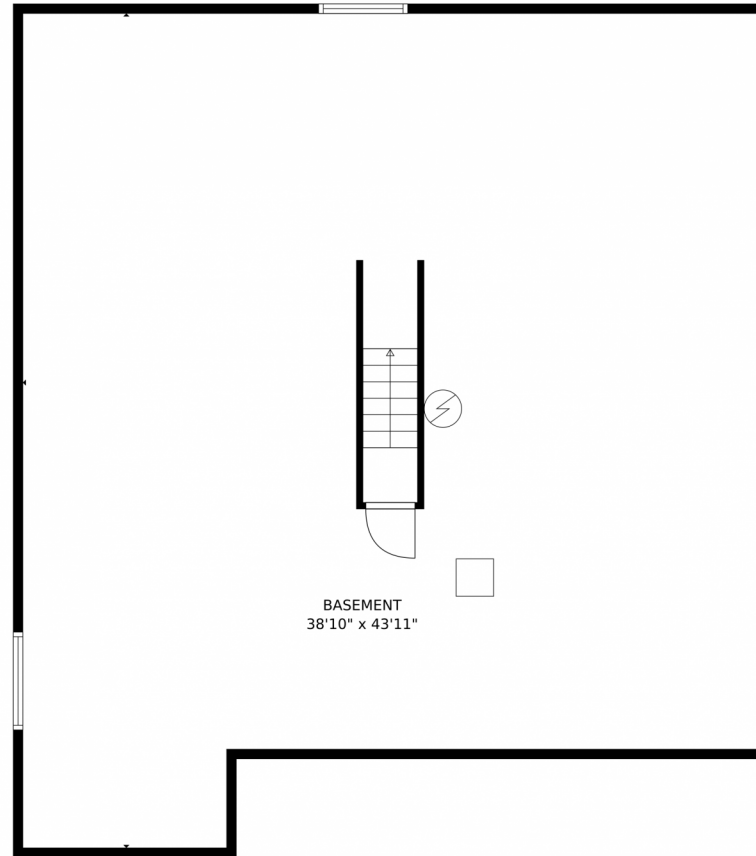
Moon Zhao
720-935-2368
themannagroupcolorado@gmail.com



Scan code
for more
property
details



3239 Honeysuckle Court, Fort Collins, CO 80521 – Lower Level



BASEMENT
38'10" x 43'11"

TOTAL: 1591 sq. ft
Below Ground: 0 sq. ft, FLOOR 2: 1591 sq. ft
EXCLUDED AREAS: BASEMENT: 1559 sq. ft, GARAGE: 375 sq. ft, PORCH: 55 sq. ft,
DECK: 154 sq. ft

MEASUREMENTS CALCULATED BY V1Photos.com ARE DEEMED HIGHLY RELIABLE BUT NOT GUARANTEED.

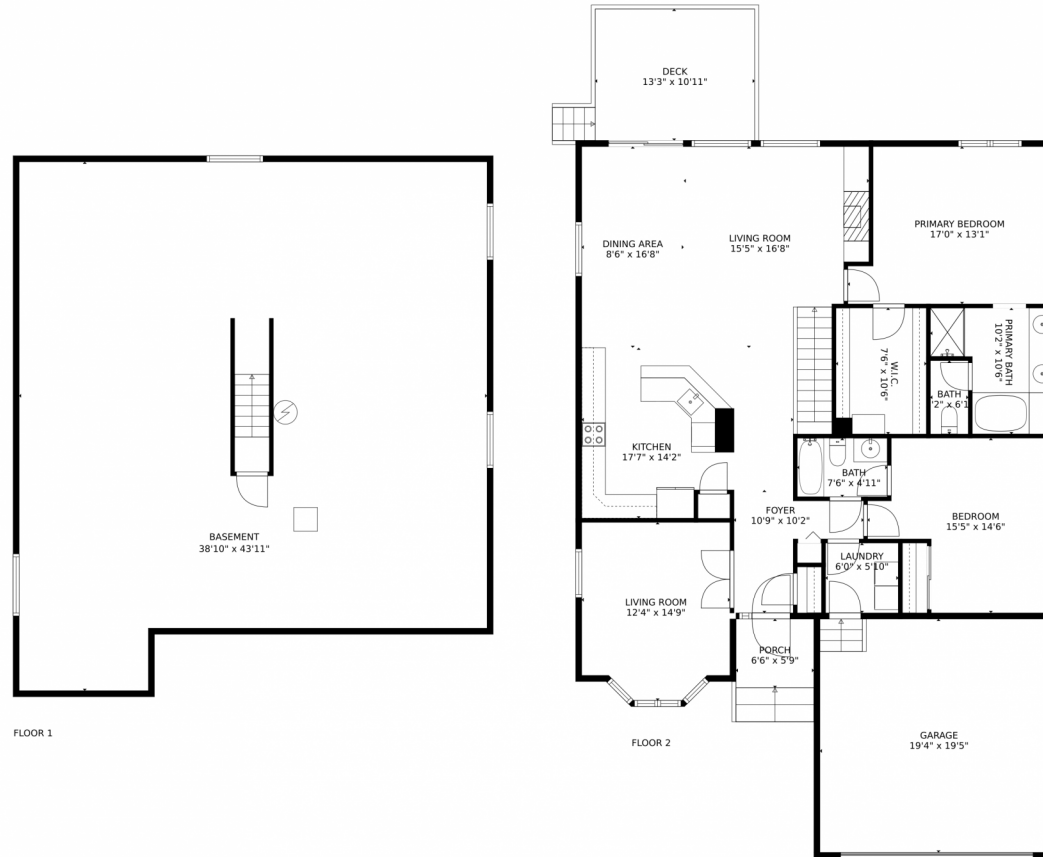


Disclaimer: Sizes and Dimensions are Approximate, Actual May Vary.

Moon Zhao
720-935-2368
themannagroupcolorado@gmail.com



3239 Honeysuckle Court, Fort Collins, CO 80521 – All Levels



TOTAL: 1591 sq. ft
Below Ground: 0 sq. ft, FLOOR 2: 1591 sq. ft
EXCLUDED AREAS: BASEMENT: 1559 sq. ft, GARAGE: 375 sq. ft, PORCH: 55 sq. ft,
DECK: 154 sq. ft

MEASUREMENTS CALCULATED BY V1Photos.com ARE DEEMED HIGHLY RELIABLE BUT NOT GUARANTEED.



Disclaimer: Sizes and Dimensions are Approximate, Actual May Vary.

Moon Zhao
720-935-2368
themannagroupcolorado@gmail.com

