

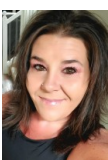
FANTASTIC LAKEWOOD RANCH NEAR BELMAR!!



 Single Family
  2240 SQFT
  5 Beds
  2 Baths
  1 Car
  0.21 Acre

PROPERTY DETAILS

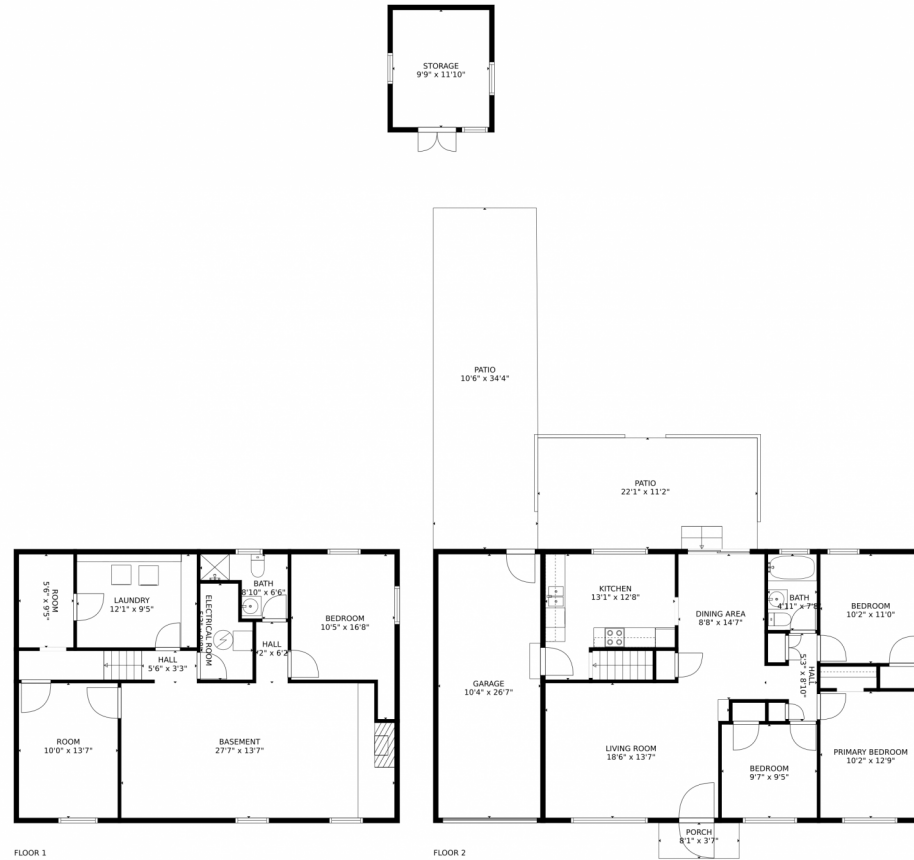
Move-in ready home in desirable Lakewood location!! Features include hardwood flooring, freshly painted kitchen cabinets, spacious living room with lots of natural light, dining area with sliding door to large covered patio in backyard, 3 bedrooms and a full bath on the main floor. Fully finished basement with 2 additional bedrooms, 3/4 bath, large family room with fireplace, laundry room and extra storage space. New paint and carpet throughout. Vinyl windows. Oversized attached garage. Walking distance to CCU, close to Belmar, shopping, restaurants and more. Easy access to lightrail and highways. Quick possession available. Tons of potential to customize and make your own.



RaNae Rodriguez
303-875-4091
ranae@mscadvisors.com
<http://www.mscadvisors.com>



25 South Dudley Street, Lakewood, CO 80226 – All Levels

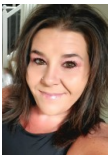


TOTAL: 1966 sq. ft
Below Ground: 960 sq. ft, FLOOR 2: 1006 sq. ft
EXCLUDED AREAS: ELECTRICAL ROOM: 46 sq. ft, PATIO: 608 sq. ft, PORCH: 29 sq. ft,
GARAGE: 274 sq. ft, STORAGE: 115 sq. ft

MEASUREMENTS CALCULATED BY V1Photos.com ARE DEEMED HIGHLY RELIABLE BUT NOT GUARANTEED.



Disclaimer: Sizes and Dimensions are Approximate, Actual May Vary.



RaNae Rodriguez
303-875-4091
ranae@mscadvisors.com
<http://www.mscadvisors.com>

