



1213 Greenwood Lane
Castle Rock, CO 80104



Single Family



1579 SQFT



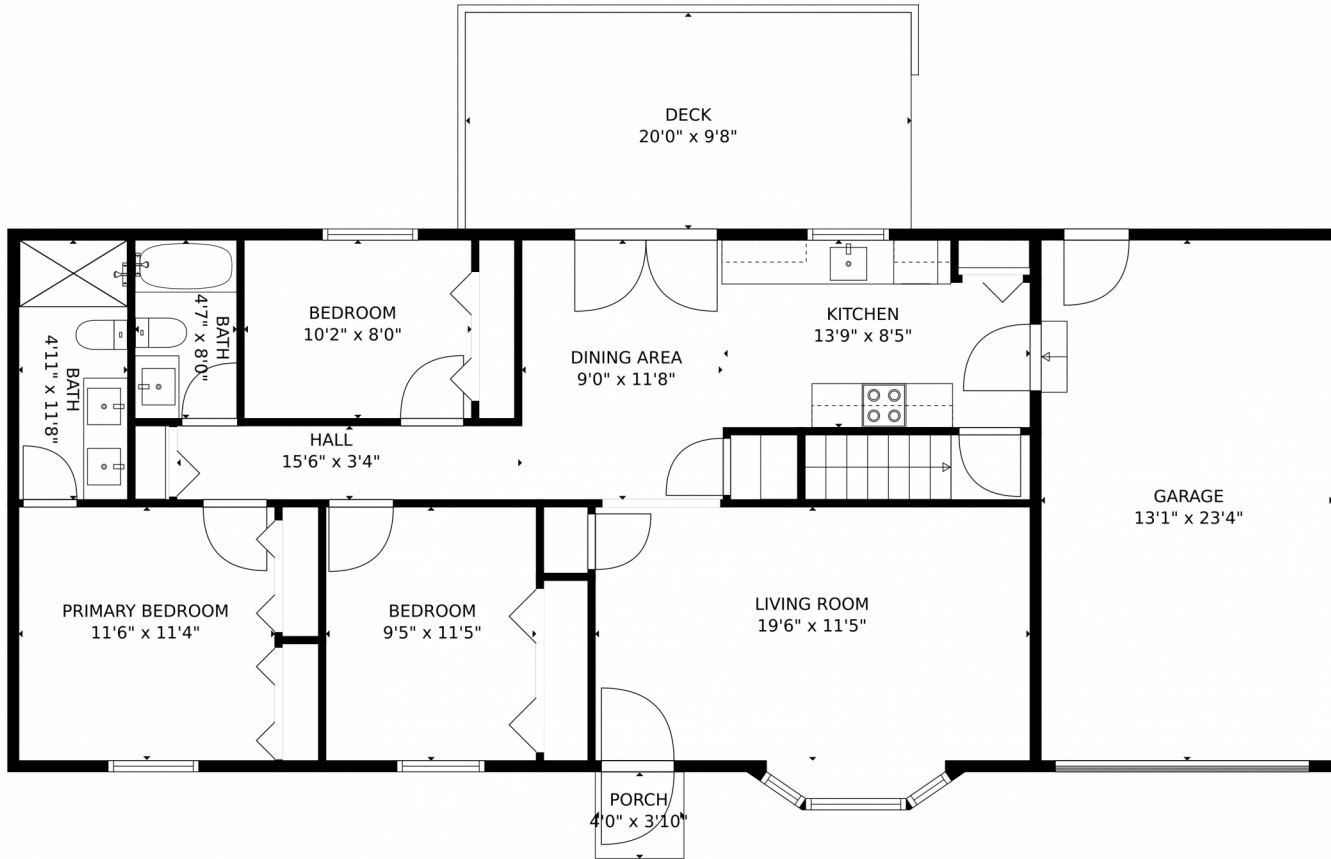
Andrea Price
303-956-9691
andrea@pricecohomes.com



Scan code
for more
property
details



1213 Greenwood Lane, Castle Rock, CO 80104 – Main Level



TOTAL: 1915 sq. ft
Below Ground: 856 sq. ft, FLOOR 2: 1059 sq. ft
EXCLUDED AREAS: UTILITY: 64 sq. ft, UNDEFINED: 27 sq. ft, GARAGE: 306 sq. ft,
DECK: 194 sq. ft, PORCH: 15 sq. ft, EMBEDDEDWINDOW: 12 sq. ft
MEASUREMENTS CALCULATED BY V1Photos.com ARE DEEMED HIGHLY RELIABLE BUT NOT GUARANTEED.



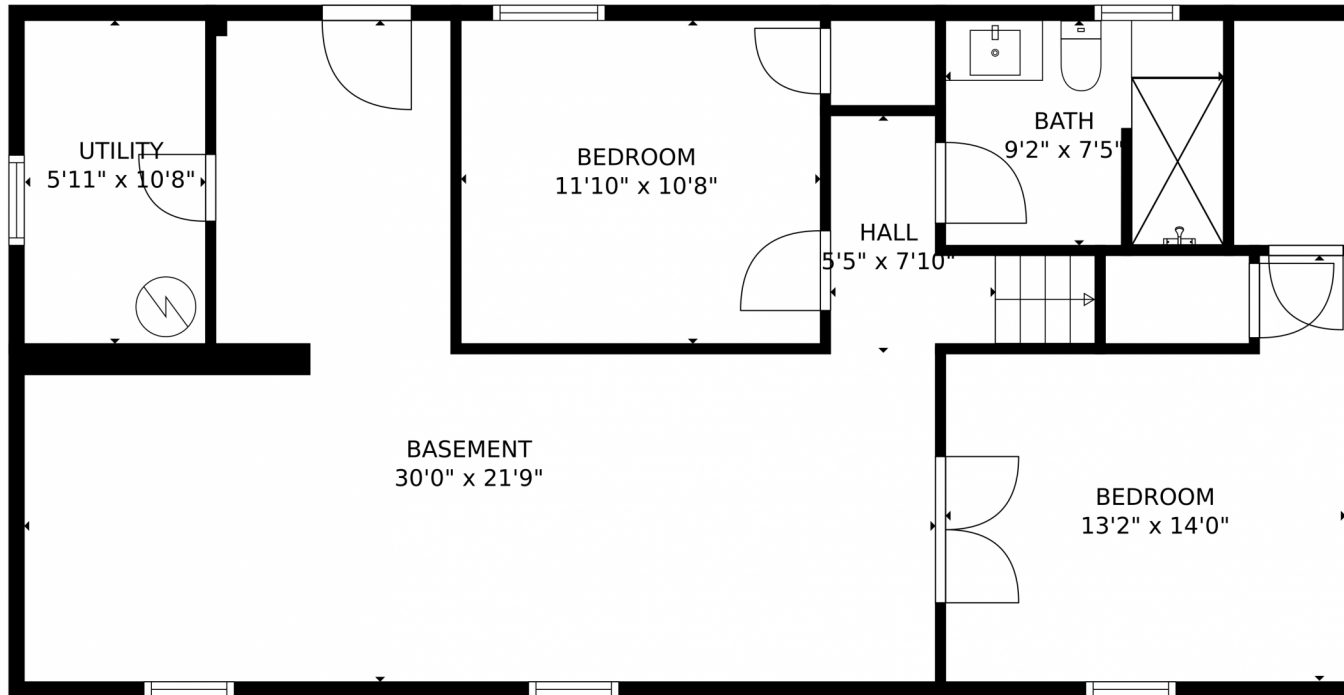
Disclaimer: Sizes and Dimensions are Approximate, Actual May Vary.



Andrea Price
303-956-9691
andrea@pricecohomes.com



1213 Greenwood Lane, Castle Rock, CO 80104 – Lower Level



TOTAL: 1915 sq. ft
Below Ground: 856 sq. ft, FLOOR 2: 1059 sq. ft
EXCLUDED AREAS: UTILITY: 64 sq. ft, UNDEFINED: 27 sq. ft, GARAGE: 306 sq. ft,
DECK: 194 sq. ft, PORCH: 15 sq. ft, EMBEDDEDWINDOW: 12 sq. ft
MEASUREMENTS CALCULATED BY V1Photos.com ARE DEEMED HIGHLY RELIABLE BUT NOT GUARANTEED.



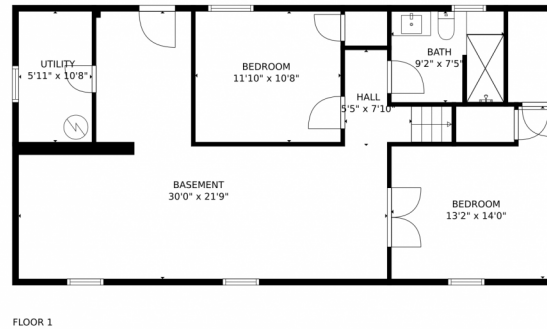
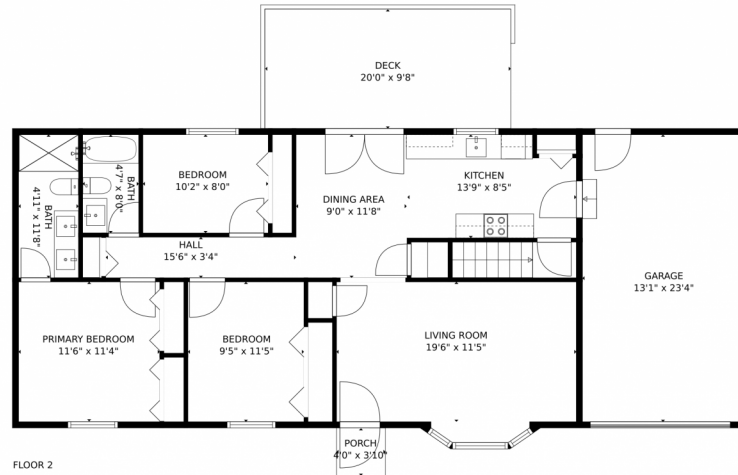
Disclaimer: Sizes and Dimensions are Approximate, Actual May Vary.



Andrea Price
303-956-9691
andrea@pricecohomes.com



1213 Greenwood Lane, Castle Rock, CO 80104 – All Levels



TOTAL: 1915 sq. ft
Below Ground: 856 sq. ft, FLOOR 2: 1059 sq. ft
EXCLUDED AREAS: UTILITY: 64 sq. ft, UNDEFINED: 27 sq. ft, GARAGE: 306 sq. ft,
DECK: 194 sq. ft, PORCH: 15 sq. ft, EMBEDDEDWINDOW: 12 sq. ft
MEASUREMENTS CALCULATED BY V1Photos.com ARE DEEMED HIGHLY RELIABLE BUT NOT GUARANTEED.



Disclaimer: Sizes and Dimensions are Approximate, Actual May Vary.



Andrea Price
303-956-9691
andrea@pricecohomes.com

