



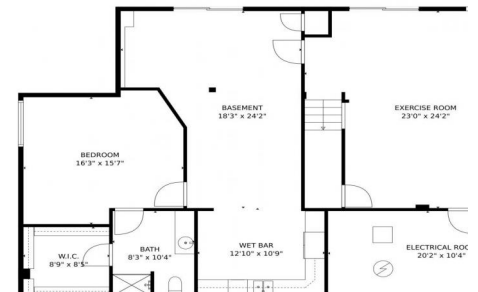
5407 Brookside Drive
 Broomfield, CO 80020
COMMUNITY: Aspen Creek

MLS # 5390607

PRICE
 \$1,275,000



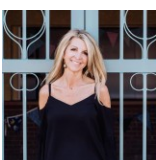
5407 Brookside Drive, Broomfield, CO 80020 - lower level



Single Family
 5356 SQFT
 5 Beds
 4/1 Baths
 3 Car
 0.27 Acre

PROPERTY DETAILS

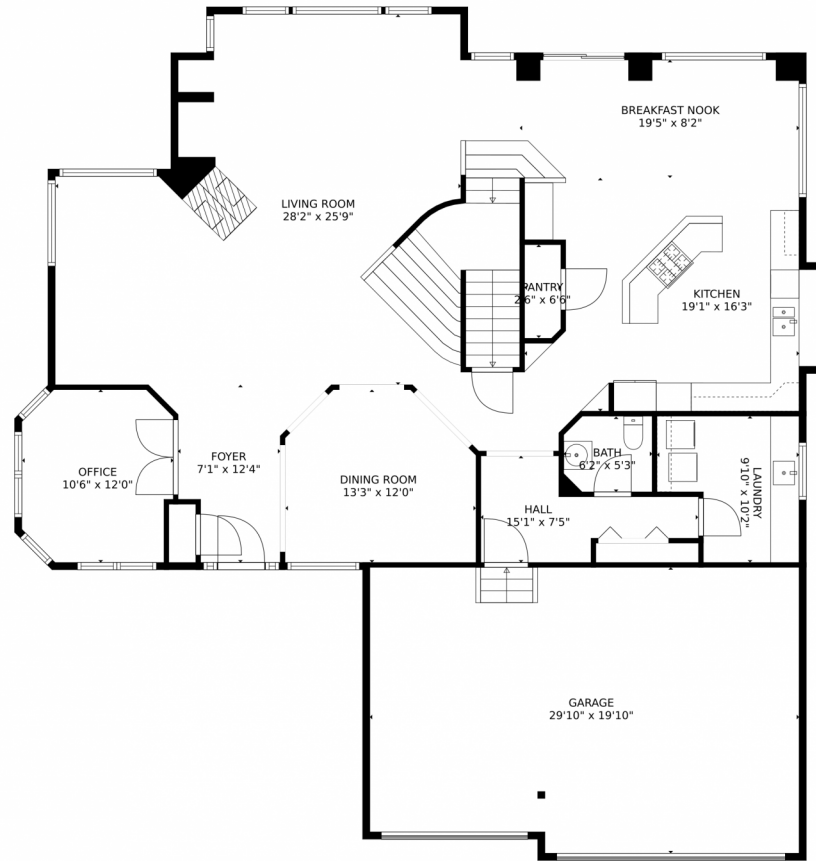
This stunning home in Aspen Creek is located next to the neighborhood green space and close to the school and community pool. With a large open floor plan, five bedrooms, and five bathrooms, there is plenty of space for a large family or entertaining. The walkout basement has a "mother-in-law suite" with a kitchen and private entrance. Updates include a newer HVAC system, windows, hot water heater, carpet, and a redone composite deck. The backyard offers picturesque views and a tranquil setting. Located in a desirable neighborhood with top-rated schools and easy access to Denver, Boulder, and DIA. Don't miss out on this opportunity!



Christy Hepp
 303-910-5393
 cnishi1068@msn.com
<https://christysellscolorado.com>



5407 Brookside Drive, Broomfield, CO 80020 – main level



TOTAL: 4828 sq. ft
Below Ground: 1475 sq. ft, FLOOR 2: 1812 sq. ft, FLOOR 3: 1541 sq. ft
EXCLUDED AREAS: ELECTRICAL ROOM: 210 sq. ft, GARAGE: 574 sq. ft, EMBEDDED WINDOW: 11 sq. ft,
OPEN TO BELOW: 554 sq. ft

MEASUREMENTS CALCULATED BY V1Photos.com ARE DEEMED HIGHLY RELIABLE BUT NOT GUARANTEED.



Disclaimer: Sizes and Dimensions are Approximate, Actual May Vary.



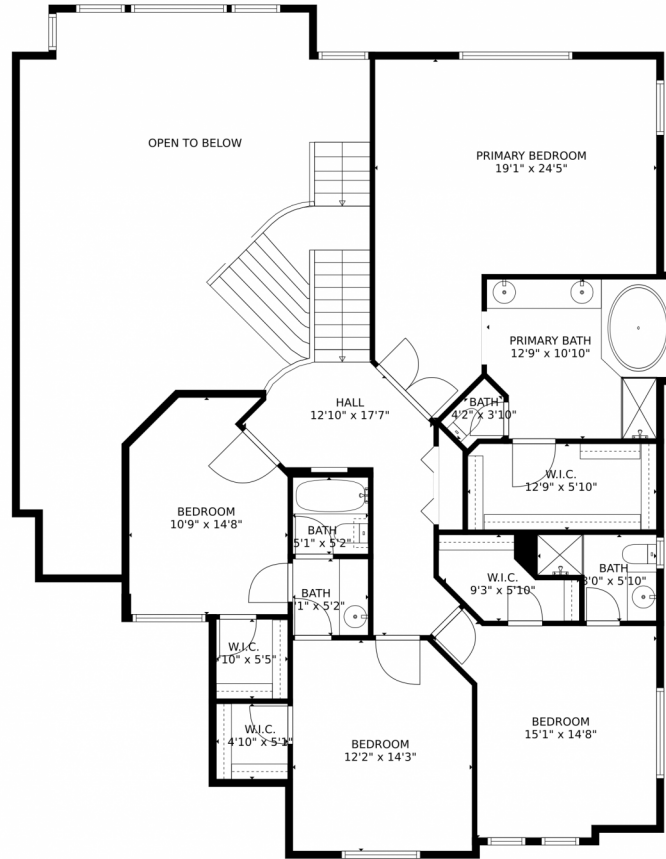
Christy Hepp
303-910-5393
cnishi1068@msn.com
<https://christysellscolorado.com>



Scan code
for more
property
details



5407 Brookside Drive, Broomfield, CO 80020 – Upper level



TOTAL: 4828 sq. ft
Below Ground: 1475 sq. ft, FLOOR 2: 1812 sq. ft, FLOOR 3: 1541 sq. ft
EXCLUDED AREAS: ELECTRICAL ROOM: 210 sq. ft, GARAGE: 574 sq. ft, EMBEDDED WINDOW: 11 sq. ft,
OPEN TO BELOW: 554 sq. ft

MEASUREMENTS CALCULATED BY V1Photos.com ARE DEEMED HIGHLY RELIABLE BUT NOT GUARANTEED.



Disclaimer: Sizes and Dimensions are Approximate, Actual May Vary.



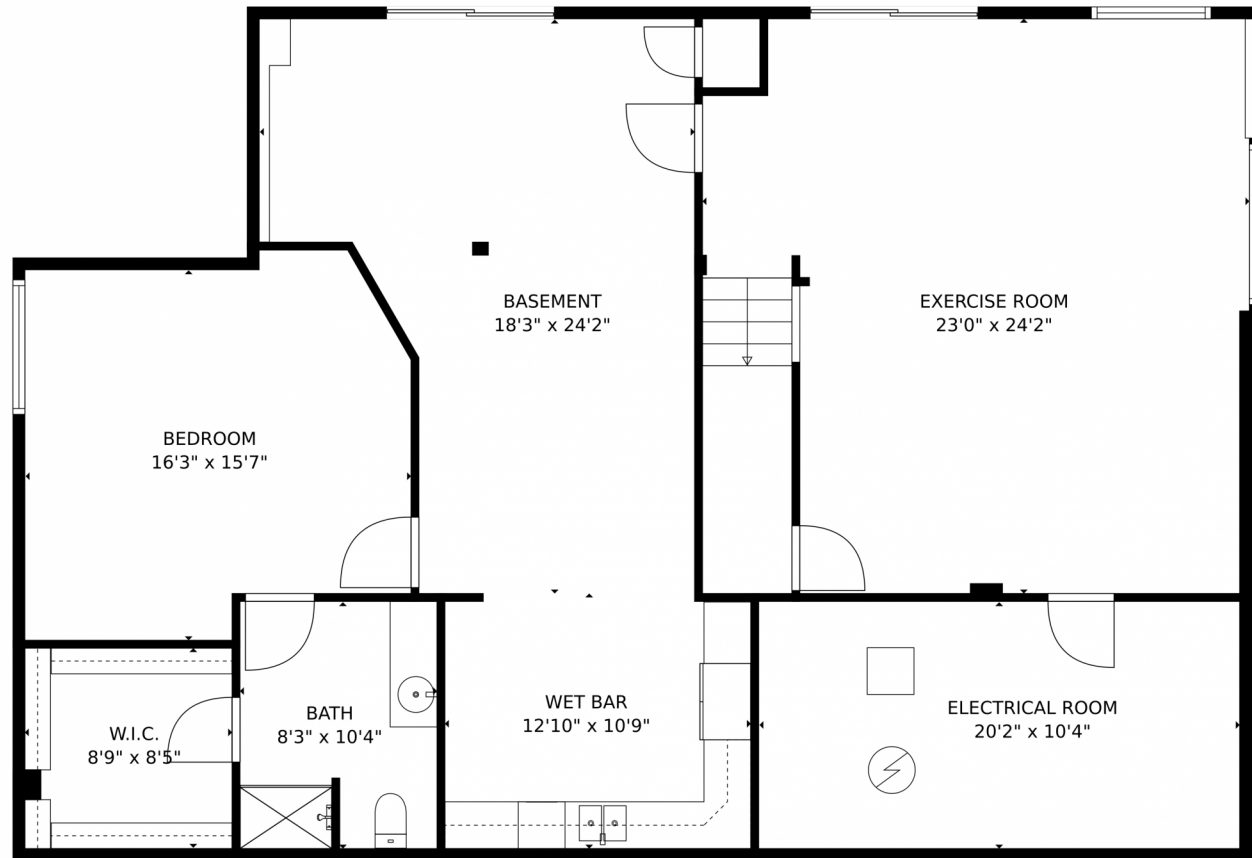
Christy Hepp
303-910-5393
cnishi1068@msn.com
<https://christysellscolorado.com>



Scan code
for more
property
details



5407 Brookside Drive, Broomfield, CO 80020 – lower level

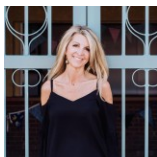


TOTAL: 4828 sq. ft
Below Ground: 1475 sq. ft, FLOOR 2: 1812 sq. ft, FLOOR 3: 1541 sq. ft
EXCLUDED AREAS: ELECTRICAL ROOM: 210 sq. ft, GARAGE: 574 sq. ft, EMBEDDED WINDOW: 11 sq. ft,
OPEN TO BELOW: 554 sq. ft

MEASUREMENTS CALCULATED BY V1Photos.com ARE DEEMED HIGHLY RELIABLE BUT NOT GUARANTEED.



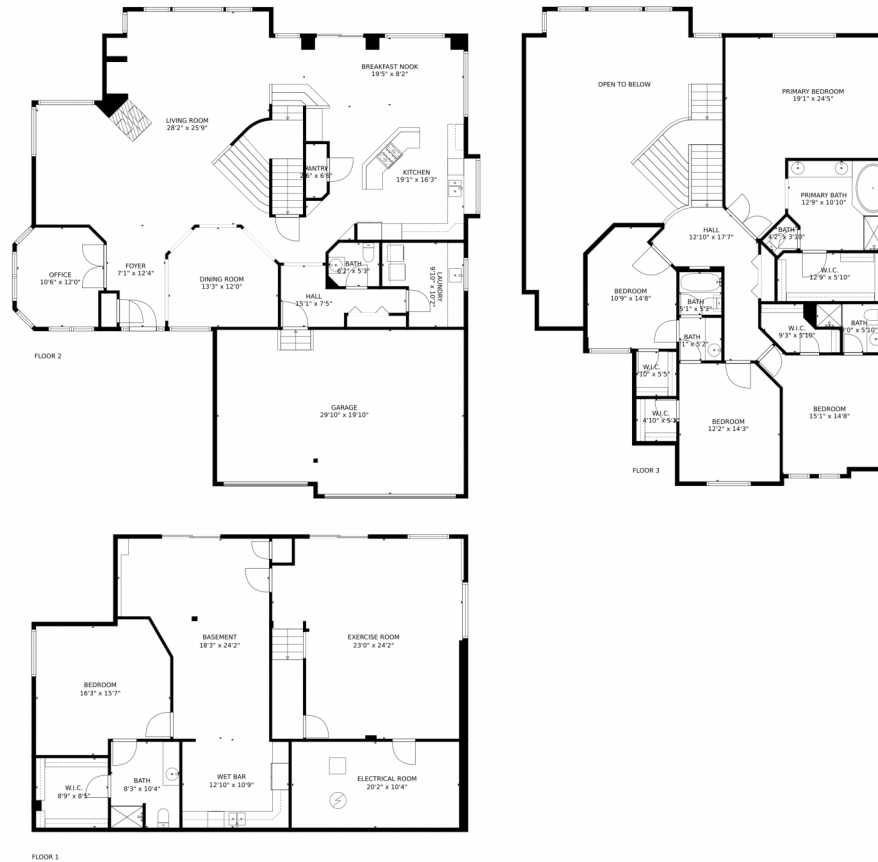
Disclaimer: Sizes and Dimensions are Approximate, Actual May Vary.



Christy Hepp
303-910-5393
cnishi1068@msn.com
<https://christysellscolorado.com>



5407 Brookside Drive, Broomfield, CO 80020 – all levels



TOTAL: 4828 sq. ft
Below Ground: 1475 sq. ft, FLOOR 2: 1812 sq. ft, FLOOR 3: 1541 sq. ft
EXCLUDED AREAS: ELECTRICAL ROOM: 210 sq. ft, GARAGE: 574 sq. ft, EMBEDDED WINDOW: 11 sq. ft,
OPEN TO BELOW: 554 sq. ft

MEASUREMENTS CALCULATED BY V1Photos.com ARE DEEMED HIGHLY RELIABLE BUT NOT GUARANTEED.



Disclaimer: Sizes and Dimensions are Approximate, Actual May Vary.



Christy Hepp
303-910-5393
cnishi1068@msn.com
<https://christysellscolorado.com>



Scan code
for more
property
details

