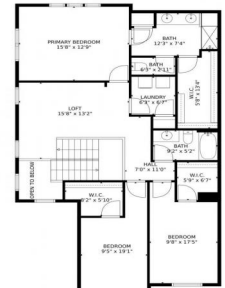




17809 Fox Street, Broomfield, CO 80023 - Upper Level



Single Family

2131 SQFT

3 Beds

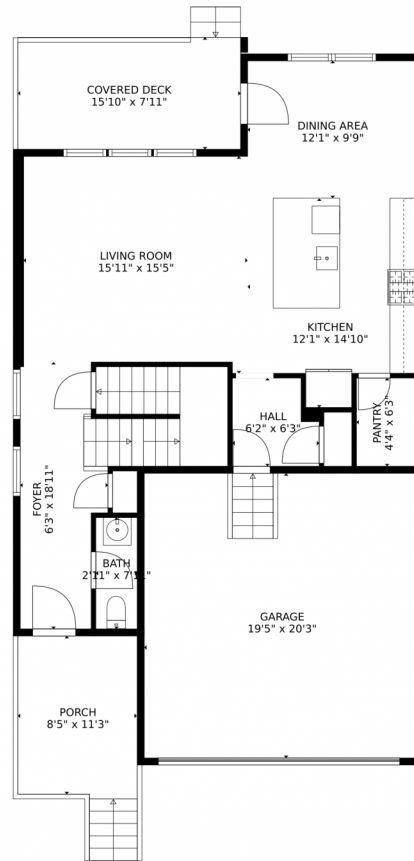
2/1 Baths



Taylor Haas
 303-665-7368
 taylorh@coloradorpm.com
<https://www.coloradorpm.com/available-rental-properties-denver>



17809 Fox Street, Broomfield, CO 80023 – Main Level



TOTAL: 1980 sq. ft

Below Ground: 0 sq. ft, FLOOR 2: 796 sq. ft, FLOOR 3: 1184 sq. ft
EXCLUDED AREAS: HALL: 204 sq. ft, BASEMENT: 592 sq. ft, GARAGE: 393 sq. ft,
COVERED DECK: 126 sq. ft, PORCH: 111 sq. ft, OPEN TO BELOW: 35 sq. ft

MEASUREMENTS CALCULATED BY V1Photos.com ARE DEEMED HIGHLY RELIABLE BUT NOT GUARANTEED.



Disclaimer: Sizes and Dimensions are Approximate, Actual May Vary.



Taylor Haas

303-665-7368

taylorh@coloradorpm.com

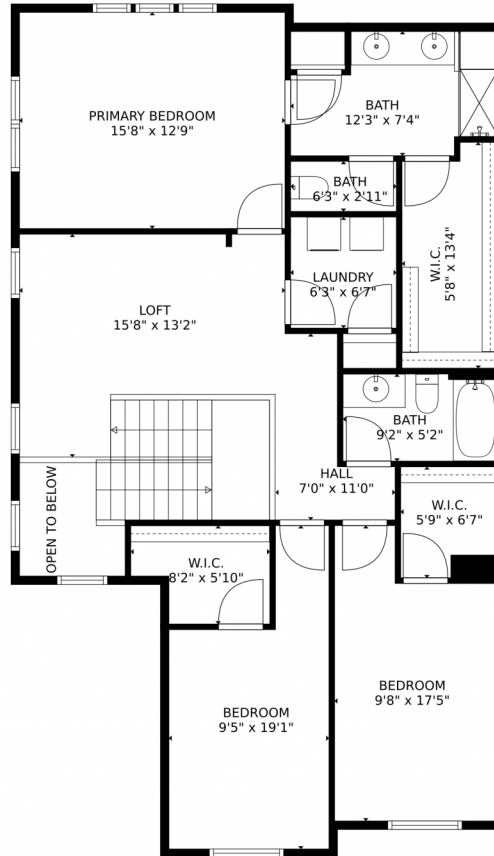
<https://www.coloradorpm.com/available-rental-properties-denver>



Scan code
for more
property
details



17809 Fox Street, Broomfield, CO 80023 – Upper Level



TOTAL: 1980 sq. ft
Below Ground: 0 sq. ft, FLOOR 2: 796 sq. ft, FLOOR 3: 1184 sq. ft
EXCLUDED AREAS: HALL: 204 sq. ft, BASEMENT: 592 sq. ft, GARAGE: 393 sq. ft,
COVERED DECK: 126 sq. ft, PORCH: 111 sq. ft, OPEN TO BELOW: 35 sq. ft
MEASUREMENTS CALCULATED BY V1Photos.com ARE DEEMED HIGHLY RELIABLE BUT NOT GUARANTEED.



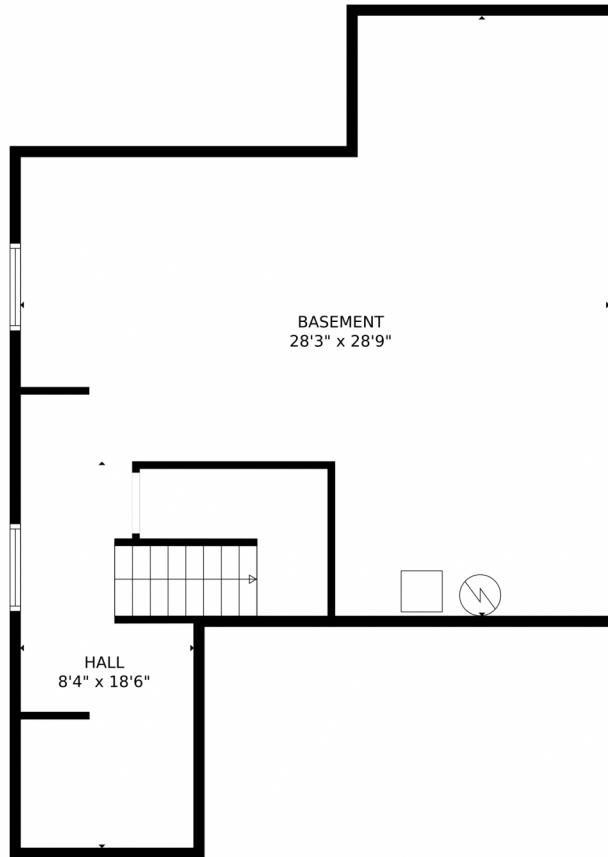
Disclaimer: Sizes and Dimensions are Approximate, Actual May Vary.



Taylor Haas
303-665-7368
taylorh@coloradorm.com
<https://www.coloradorm.com/available-rental-properties-denver>



17809 Fox Street, Broomfield, CO 80023 – Lower Level



TOTAL: 1980 sq. ft
Below Ground: 0 sq. ft, FLOOR 2: 796 sq. ft, FLOOR 3: 1184 sq. ft
EXCLUDED AREAS: HALL: 204 sq. ft, BASEMENT: 592 sq. ft, GARAGE: 393 sq. ft,
COVERED DECK: 126 sq. ft, PORCH: 111 sq. ft, OPEN TO BELOW: 35 sq. ft
MEASUREMENTS CALCULATED BY V1Photos.com ARE DEEMED HIGHLY RELIABLE BUT NOT GUARANTEED.



Disclaimer: Sizes and Dimensions are Approximate, Actual May Vary.



Taylor Haas
303-665-7368
taylorh@coloradorpm.com
<https://www.coloradorpm.com/available-rental-properties-denver>



17809 Fox Street, Broomfield, CO 80023 – All Levels



TOTAL: 1980 sq. ft

Below Ground: 0 sq. ft, FLOOR 2: 796 sq. ft, FLOOR 3: 1184 sq. ft
EXCLUDED AREAS: HALL: 204 sq. ft, BASEMENT: 592 sq. ft, GARAGE: 393 sq. ft,
COVERED DECK: 126 sq. ft, PORCH: 111 sq. ft, OPEN TO BELOW: 35 sq. ft

MEASUREMENTS CALCULATED BY V1Photos.COM ARE DEEMED HIGHLY RELIABLE BUT NOT GUARANTEED.



Disclaimer: Sizes and Dimensions are Approximate, Actual May Vary.



Taylor Haas

303-665-7368

taylorh@coloradorpm.com

<https://www.coloradorpm.com/available-rental-properties-denver>



Scan code
for more
property
details

