

Single Family



1783 SQFT



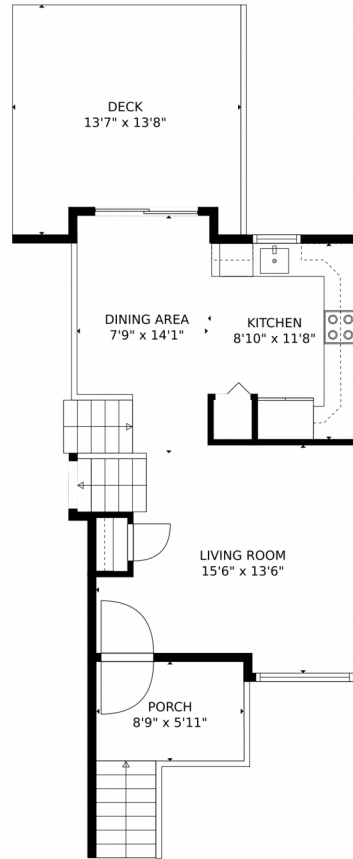
**Paula Workman**  
303-888-1033  
paula@paulaworkman.com



Scan code  
for more  
property  
details



6340 Northwind Drive, Colorado Springs, CO 80918 — Main



**TOTAL: 1645 sq. ft**  
Below Ground: 282 sq. ft, FLOOR 2: 332 sq. ft, FLOOR 3: 415 sq. ft, FLOOR 4: 616 sq. ft  
EXCLUDED AREAS: UTILITY: 53 sq. ft, GARAGE: 381 sq. ft, FIREPLACE: 6 sq. ft,  
PORCH: 52 sq. ft, DECK: 171 sq. ft

MEASUREMENTS CALCULATED BY V1Photos.com ARE DEEMED HIGHLY RELIABLE BUT NOT GUARANTEED.



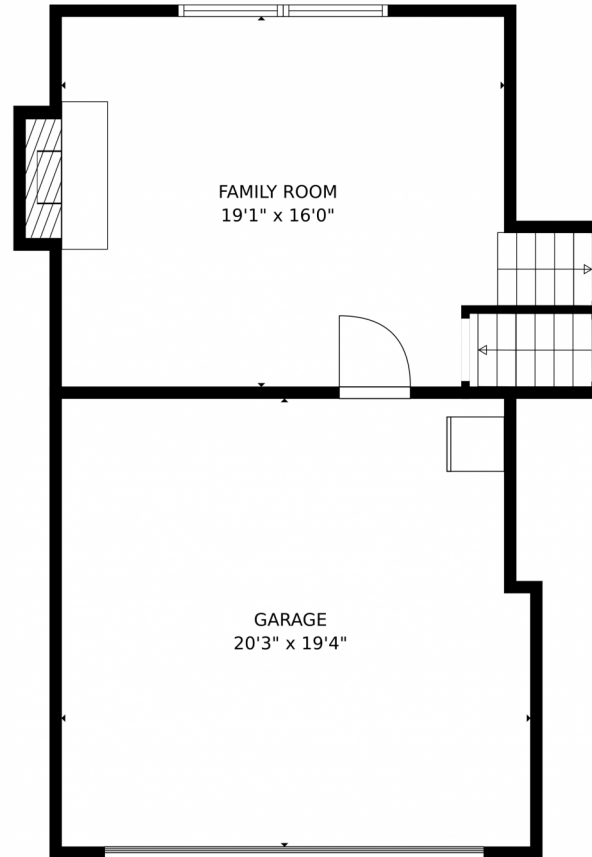
Disclaimer: Sizes and Dimensions are Approximate, Actual May Vary.



**Paula Workman**  
303-888-1033  
paula@paulaworkman.com



6340 Northwind Drive, Colorado Springs, CO 80918 – 1st Level



**TOTAL: 1645 sq. ft**  
Below Ground: 282 sq. ft, FLOOR 2: 332 sq. ft, FLOOR 3: 415 sq. ft, FLOOR 4: 616 sq. ft  
EXCLUDED AREAS: UTILITY: 53 sq. ft, GARAGE: 381 sq. ft, FIREPLACE: 6 sq. ft,  
PORCH: 52 sq. ft, DECK: 171 sq. ft

MEASUREMENTS CALCULATED BY V1Photos.com ARE DEEMED HIGHLY RELIABLE BUT NOT GUARANTEED.



Disclaimer: Sizes and Dimensions are Approximate, Actual May Vary.

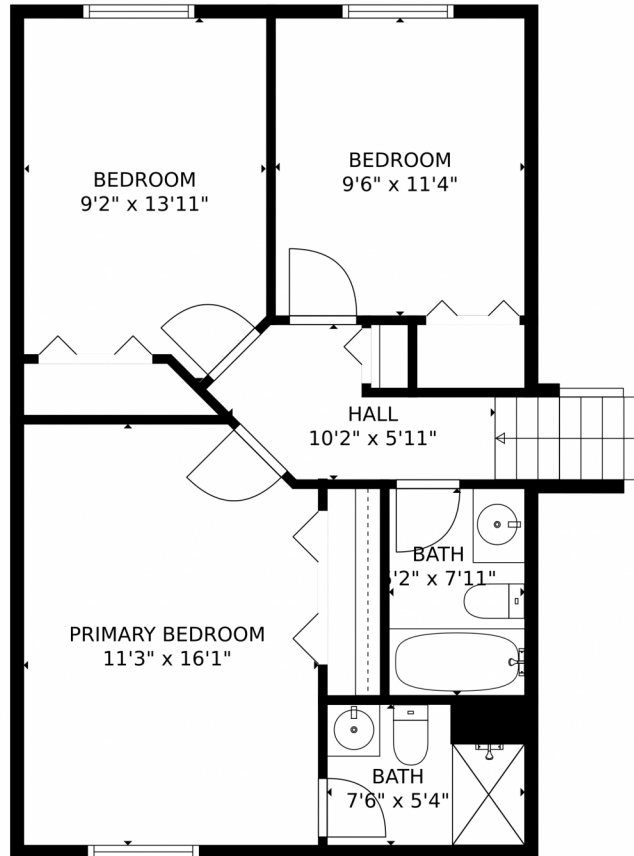


**Paula Workman**  
303-888-1033  
paula@paulaworkman.com





6340 Northwind Drive, Colorado Springs, CO 80918 – 2nd Level



**TOTAL: 1645 sq. ft**  
Below Ground: 282 sq. ft, FLOOR 2: 332 sq. ft, FLOOR 3: 415 sq. ft, FLOOR 4: 616 sq. ft  
EXCLUDED AREAS: UTILITY: 53 sq. ft, GARAGE: 381 sq. ft, FIREPLACE: 6 sq. ft,  
PORCH: 52 sq. ft, DECK: 171 sq. ft

MEASUREMENTS CALCULATED BY V1Photos.com ARE DEEMED HIGHLY RELIABLE BUT NOT GUARANTEED.

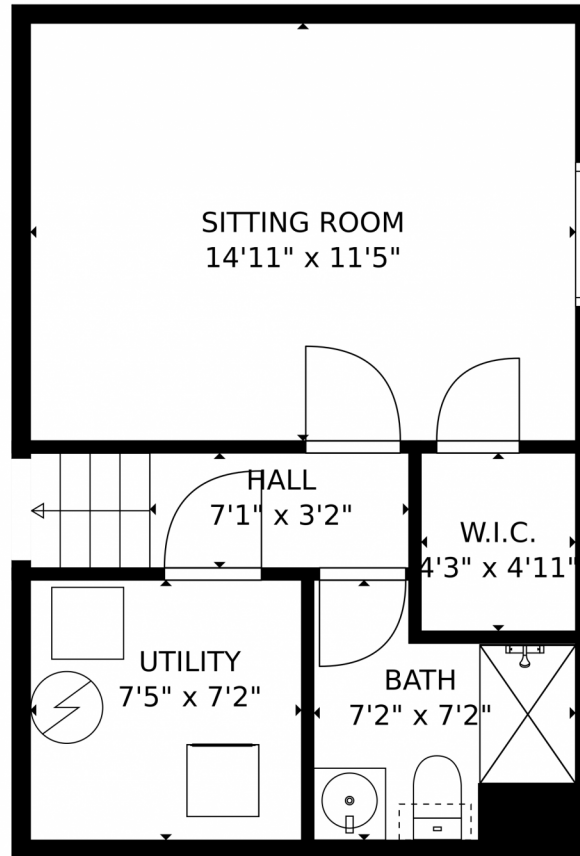


Disclaimer: Sizes and Dimensions are Approximate, Actual May Vary.



**Paula Workman**  
303-888-1033  
paula@paulaworkman.com





**TOTAL: 1645 sq. ft**  
Below Ground: 282 sq. ft, FLOOR 2: 332 sq. ft, FLOOR 3: 415 sq. ft, FLOOR 4: 616 sq. ft  
EXCLUDED AREAS: UTILITY: 53 sq. ft, GARAGE: 381 sq. ft, FIREPLACE: 6 sq. ft,  
PORCH: 52 sq. ft, DECK: 171 sq. ft

MEASUREMENTS CALCULATED BY V1Photos.com ARE DEEMED HIGHLY RELIABLE BUT NOT GUARANTEED.



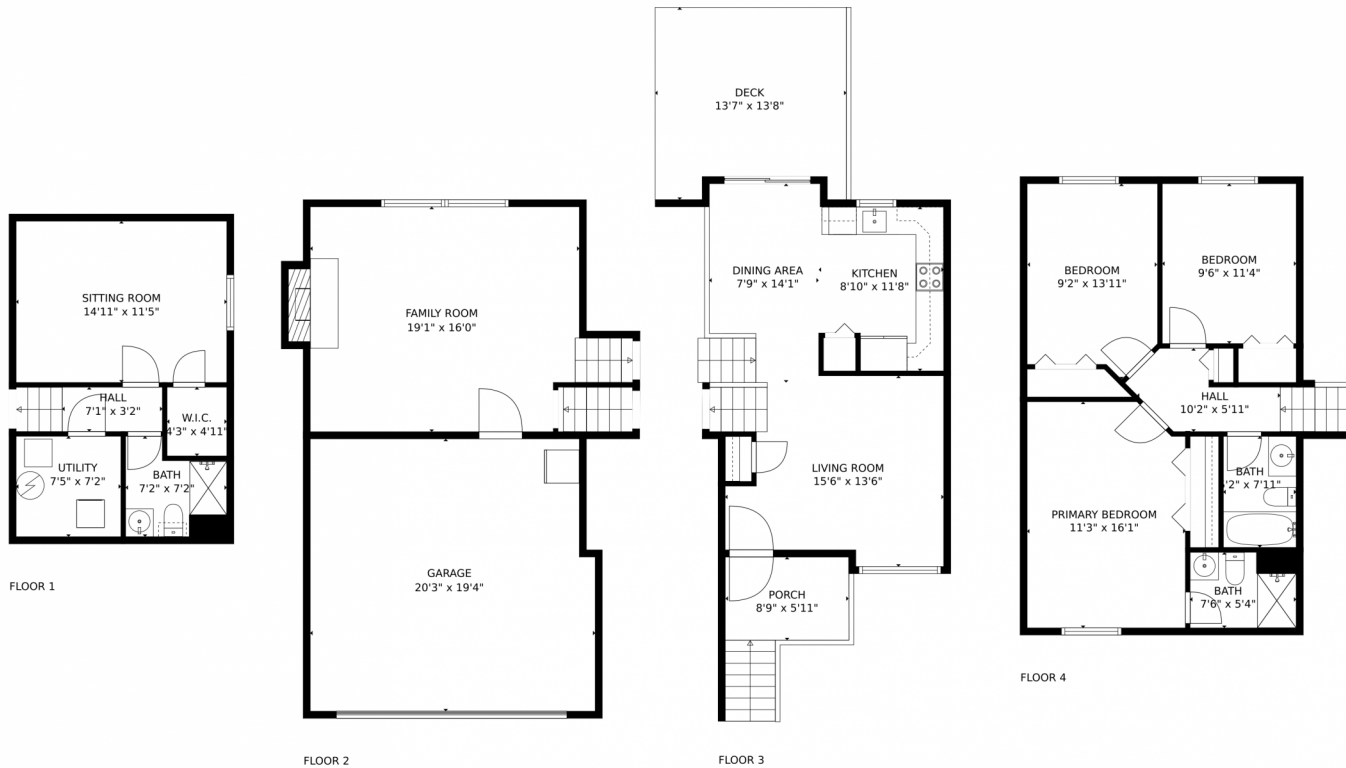
Disclaimer: Sizes and Dimensions are Approximate, Actual May Vary.



**Paula Workman**  
303-888-1033  
paula@paulaworkman.com



# 6340 Northwind Drive, Colorado Springs, CO 80918 — All Levels



**TOTAL: 1645 sq. ft**  
Below Ground: 282 sq. ft, FLOOR 2: 332 sq. ft, FLOOR 3: 415 sq. ft, FLOOR 4: 616 sq. ft  
EXCLUDED AREAS: UTILITY: 53 sq. ft, GARAGE: 381 sq. ft, FIREPLACE: 6 sq. ft,  
PORCH: 52 sq. ft, DECK: 171 sq. ft

MEASUREMENTS CALCULATED BY V1Photos.COM ARE DEEMED HIGHLY RELIABLE BUT NOT GUARANTEED.



Disclaimer: Sizes and Dimensions are Approximate, Actual May Vary.



**Paula Workman**  
303-888-1033  
paula@paulaworkman.com

