



Townhouse



2996 SQFT



3 Beds



3/1 Baths



2 Car



0.09 Acre

## PROPERTY DETAILS

Indulge in the luxuries of a completely remodeled Contemporary style Townhouse. In a word...EXQUISITE. New windows throughout the house, new window coverings, and new furnace and AC system. Great location minutes away from Cherry Creek North and downtown. This contemporary kitchen has stunning Italian Cabinetry and Quartz Countertops. The kitchen comes with designer appliances such as Thermador Built-in refrigerator, Thermador Wine Cooler with 3 temperature zones, Induction Cooktop, and WIFI Convection ovens/microwave, and built-in dishwasher. European 3D Tile and LED under kitchen cabinet lighting make it look distinctive. The quartz waterfall island with a built-in table top makes a comfortable dining area for four. Real Wood flooring throughout the 1st floor, designer carpet in bedrooms, and Luxury Vinyl in the basement. Primary Bath with Italian made vanities, quartz countertops, and double shower makes it a great spa retreat area. The spacious Primary bedroom includes a Designer built in Closet with barn doors. A newly remodeled basement has a Modern Bar equipped with an ice maker, dishwasher, and refrigerator. Basement also includes a third bedroom and 3/4 bathroom. Enjoy the backyard with new patio and updated landscaping. Perfect for entertaining!!! Four Mile Village is a secluded community with its own Club House, Pool, Tennis Court and plenty of Green Belt area and a short walk away from the Cherry Creek Trail.



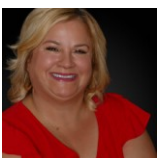
**Diana Nichols**  
 214-287-4204  
 Nicholstdiana1970@outlook.com



Scan code  
 for more  
 property  
 details



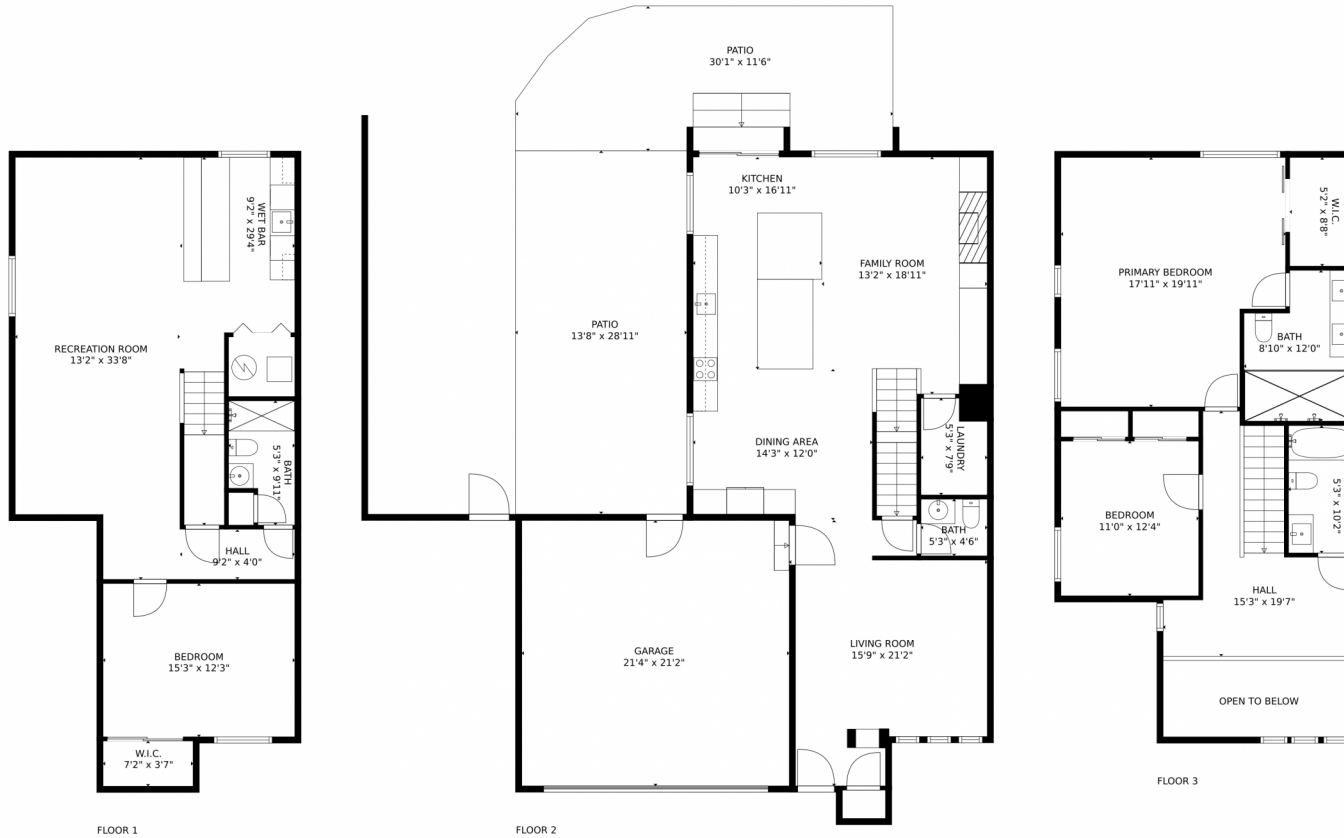
It's a perfect location, just a few minutes away from the Cherry Creek Mall, upscale shopping district, art galleries, and fine dining.



**Diana Nichols**  
214-287-4204  
Nicholsdiana1970@outlook.com



# 540 S Forest Street, Denver, CO 80246 — All Levels



**TOTAL: 2807 sq. ft**  
Below Ground: 934 sq. ft, FLOOR 2: 976 sq. ft, FLOOR 3: 897 sq. ft  
EXCLUDED AREAS: GARAGE: 451 sq. ft, PATIO: 716 sq. ft, OPEN TO BELOW: 93 sq. ft  
MEASUREMENTS CALCULATED BY V1Photos.com ARE DEEMED HIGHLY RELIABLE BUT NOT GUARANTEED.



Disclaimer: Sizes and Dimensions are Approximate, Actual May Vary.



**Diana Nichols**  
214-287-4204  
Nicholsdiana1970@outlook.com

