

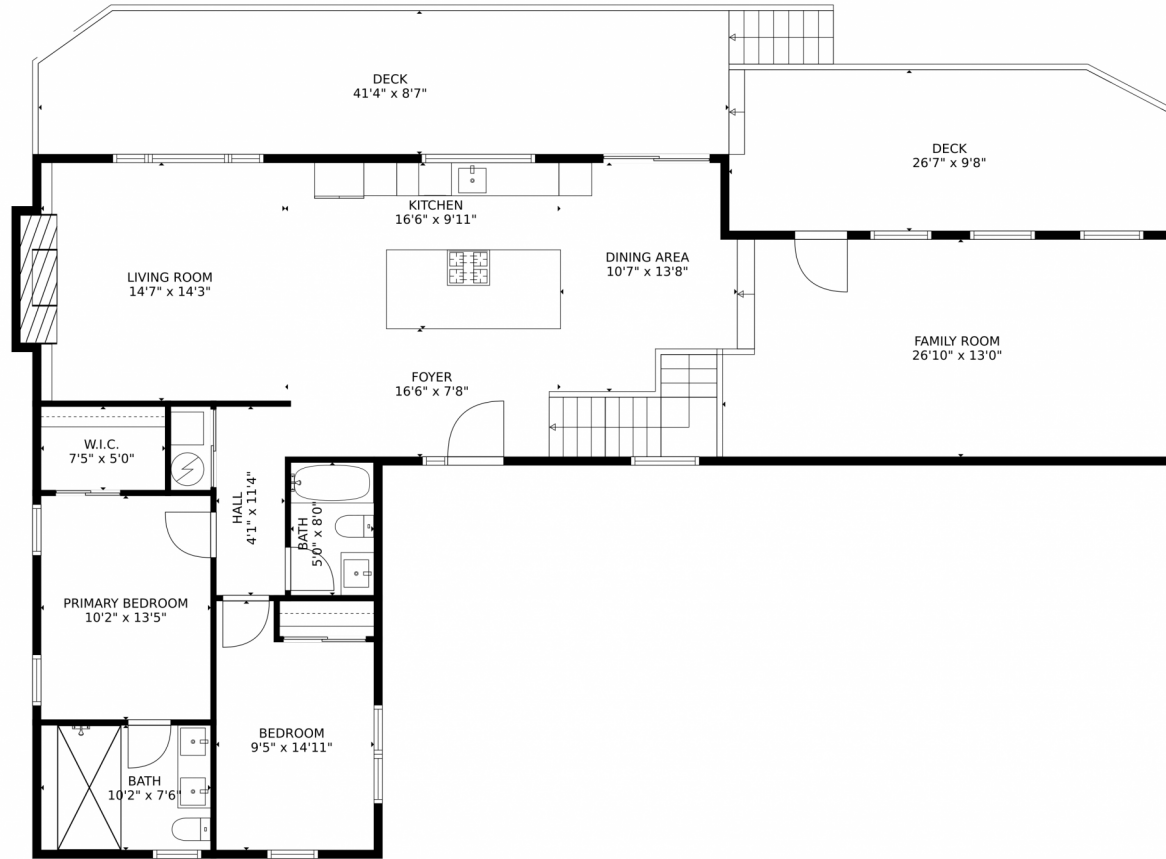
 Single Family  3200 SQFT



Shawn Kane
720-334-1034
shawn@7281re.com



10345 West 33rd Avenue, Wheat Ridge, CO 80033 – main level



TOTAL: 2711 sq. ft

Below Ground: 1171 sq. ft, FLOOR 2: 1540 sq. ft
EXCLUDED AREAS: DECK: 599 sq. ft, FIREPLACE: 8 sq. ft

MEASUREMENTS CALCULATED BY V1Photos.com ARE DEEMED HIGHLY RELIABLE BUT NOT GUARANTEED.



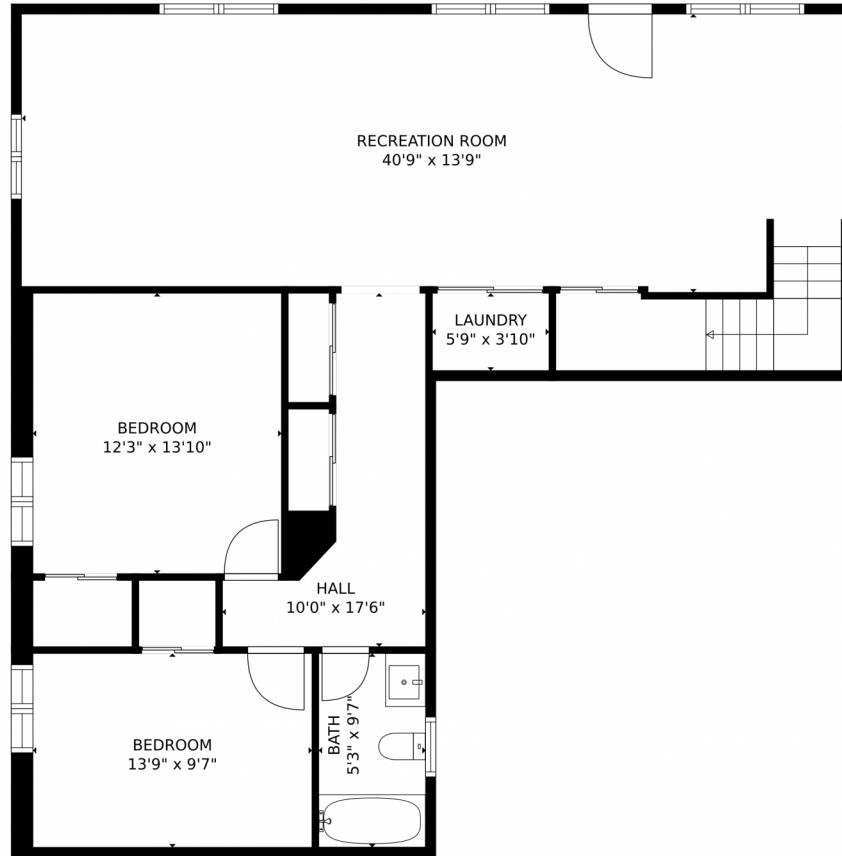
Disclaimer: Sizes and Dimensions are Approximate, Actual May Vary.



Shawn Kane
720-334-1034
shawn@7281re.com



10345 West 33rd Avenue, Wheat Ridge, CO 80033 – lower level



TOTAL: 2711 sq. ft
Below Ground: 1171 sq. ft, FLOOR 2: 1540 sq. ft
EXCLUDED AREAS: DECK: 599 sq. ft, FIREPLACE: 8 sq. ft
MEASUREMENTS CALCULATED BY V1Photos.com ARE DEEMED HIGHLY RELIABLE BUT NOT GUARANTEED.



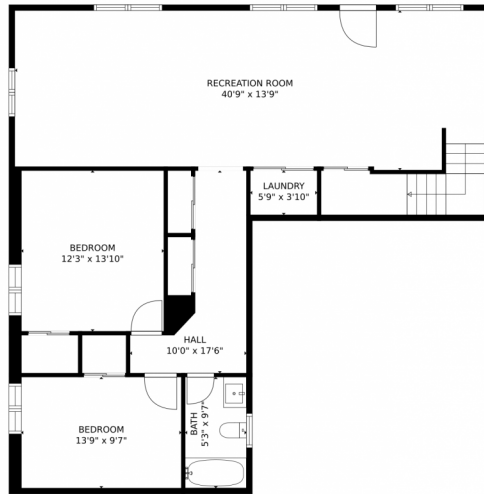
Disclaimer: Sizes and Dimensions are Approximate, Actual May Vary.



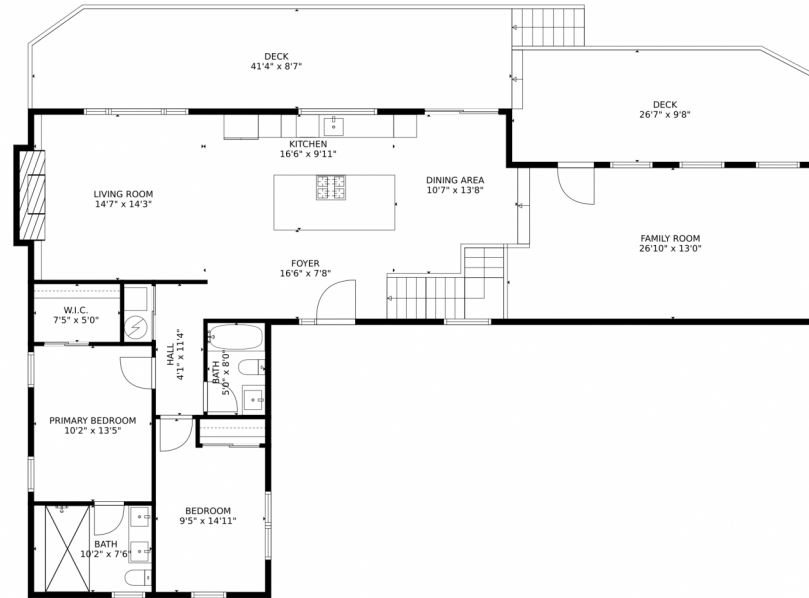
Shawn Kane
720-334-1034
shawn@7281re.com



10345 West 33rd Avenue, Wheat Ridge, CO 80033 – all levels



FLOOR 1



FLOOR 2

TOTAL: 2711 sq. ft

Below Ground: 1171 sq. ft, FLOOR 2: 1540 sq. ft
EXCLUDED AREAS: DECK: 599 sq. ft, FIREPLACE: 8 sq. ft

MEASUREMENTS CALCULATED BY V1Photos.com ARE DEEMED HIGHLY RELIABLE BUT NOT GUARANTEED.



Disclaimer: Sizes and Dimensions are Approximate, Actual May Vary.



Shawn Kane
720-334-1034
shawn@7281re.com



Scan code
for more
property
details

