



Single Family



4941 SQFT



4 Beds



3/1 Baths



3 Car



2.41 Acre



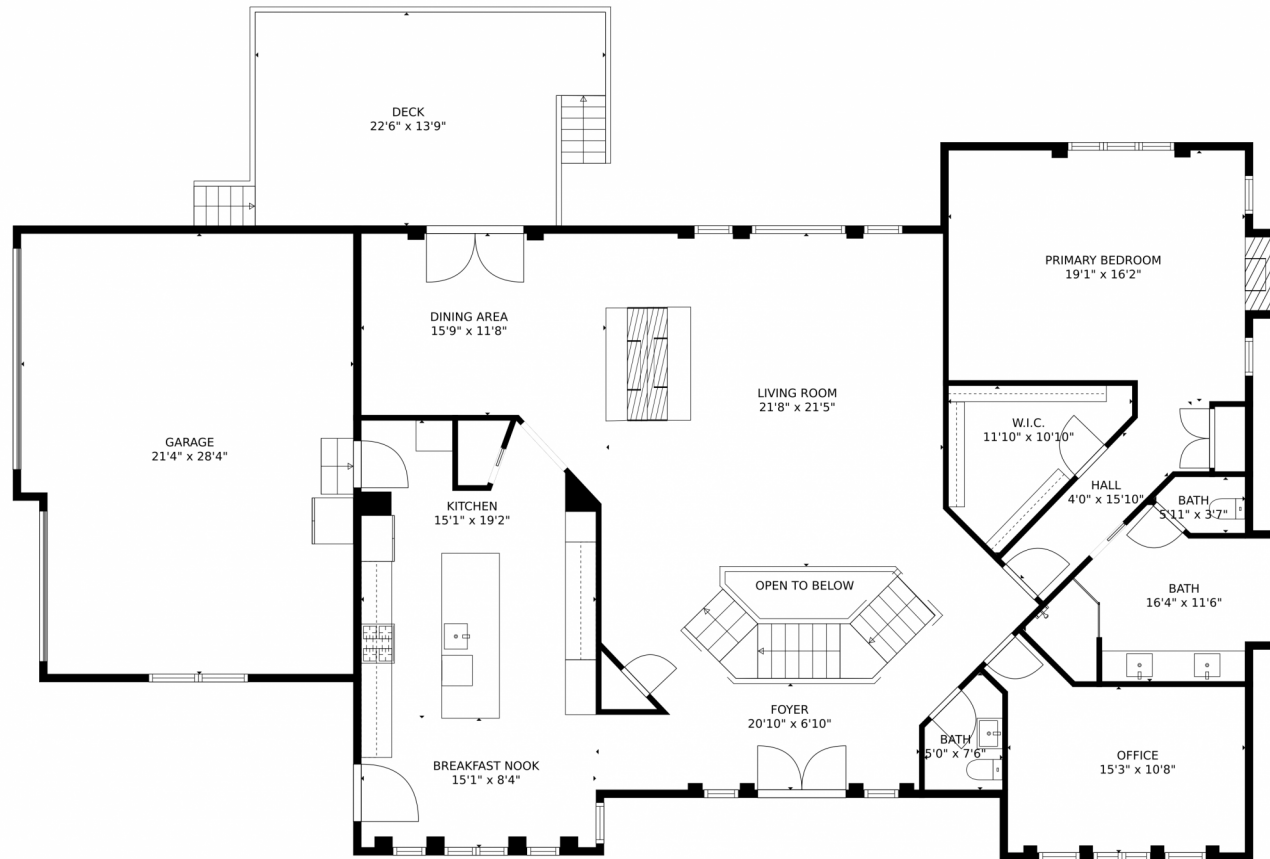
Jenna and Patrick McMenaman
303-912-0338
jenna@madisonprops.com



Scan code
for more
property
details



7116 Timbers Drive, Evergreen, CO 80439 – main level



TOTAL: 4270 sq. ft
Below Ground: 2024 sq. ft, FLOOR 2: 2246 sq. ft
EXCLUDED AREAS: ELECTRICAL ROOM: 147 sq. ft, GARAGE: 587 sq. ft, DECK: 283 sq. ft,
OPEN TO BELOW: 26 sq. ft, FIREPLACE: 7 sq. ft

MEASUREMENTS CALCULATED BY V1Photos.com ARE DEEMED HIGHLY RELIABLE BUT NOT GUARANTEED.



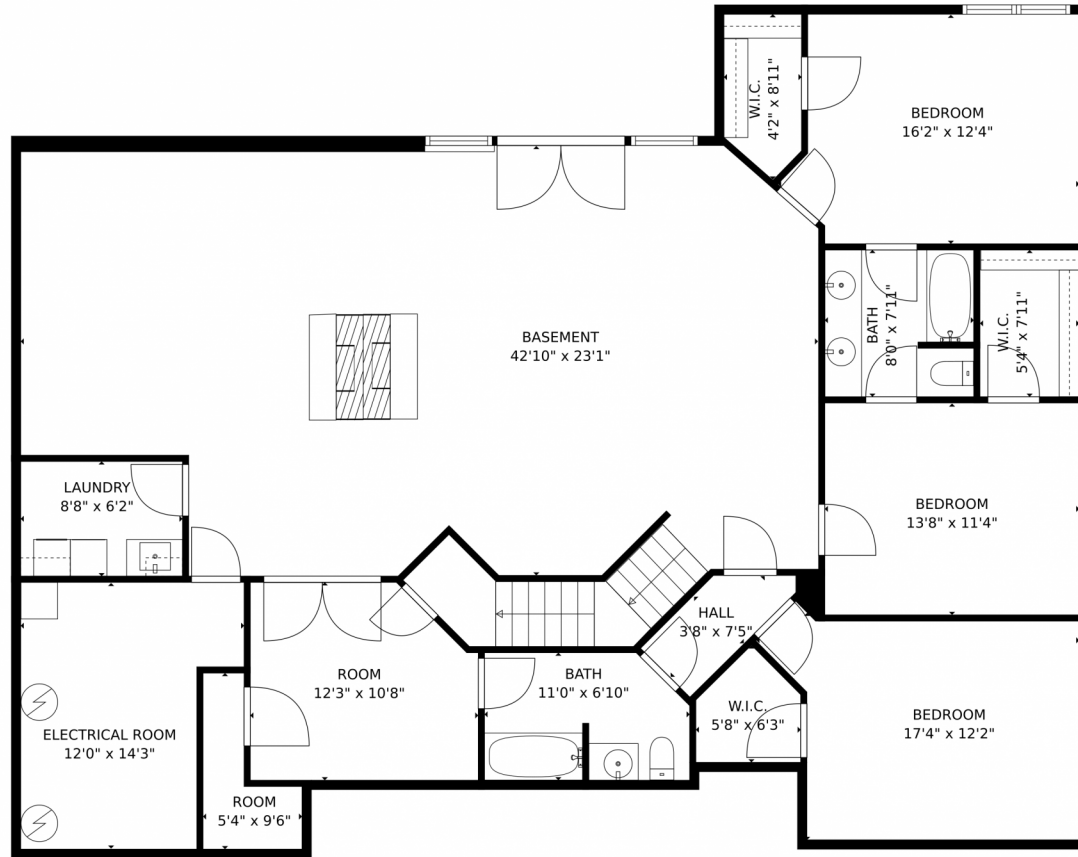
Disclaimer: Sizes and Dimensions are Approximate, Actual May Vary.



Jenna and Patrick McMenaman
303-912-0338
jenna@madisonprops.com



7116 Timbers Drive, Evergreen, CO 80439 – lower level



TOTAL: 4270 sq. ft
Below Ground: 2024 sq. ft, FLOOR 2: 2246 sq. ft
EXCLUDED AREAS: ELECTRICAL ROOM: 147 sq. ft, GARAGE: 587 sq. ft, DECK: 283 sq. ft,
OPEN TO BELOW: 26 sq. ft, FIREPLACE: 7 sq. ft

MEASUREMENTS CALCULATED BY V1Photos.com ARE DEEMED HIGHLY RELIABLE BUT NOT GUARANTEED.



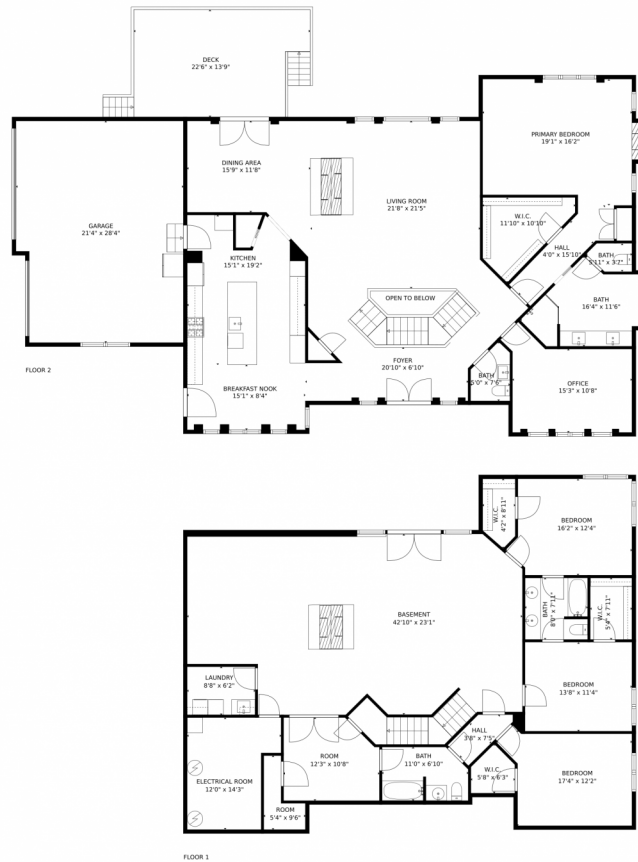
Disclaimer: Sizes and Dimensions are Approximate, Actual May Vary.



Jenna and Patrick McMenaman
303-912-0338
jenna@madisonprops.com



7116 Timbers Drive, Evergreen, CO 80439 – all levels



TOTAL: 4270 sq. ft
Below Ground: 2024 sq. ft, FLOOR 2: 2246 sq. ft
EXCLUDED AREAS: ELECTRICAL ROOM: 147 sq. ft, GARAGE: 587 sq. ft, DECK: 283 sq. ft,
OPEN TO BELOW: 26 sq. ft, FIREPLACE: 7 sq. ft

MEASUREMENTS CALCULATED BY V1Photos.com ARE DEEMED HIGHLY RELIABLE BUT NOT GUARANTEED.



Disclaimer: Sizes and Dimensions are Approximate, Actual May Vary.



Jenna and Patrick McMenaman
303-912-0338
jenna@madisonprops.com

