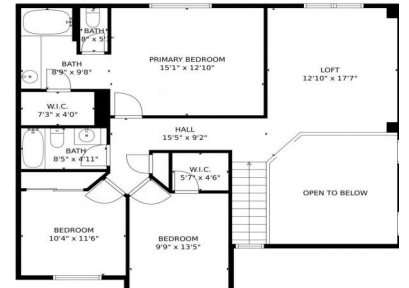




1053 Swayback Drive, Fountain, CO 80817 - 2\_1053-swayback-drive-fountain-el-paso-county-co



Single Family

1640 SQFT

3 Beds

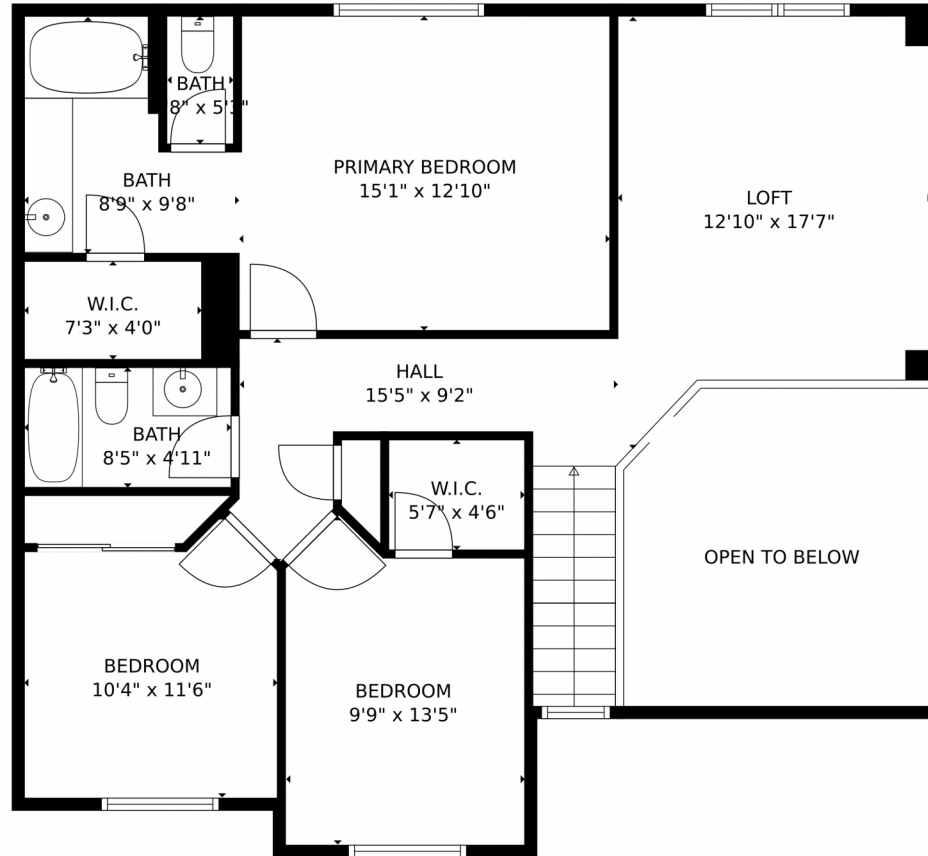
3/1 Baths

2 Car



**Jordan Kermes**  
952-956-2958  
jkermes@wedgewoodhomesrealty.com  
<https://colorado.wedgewoodhomesrealty.com>





**TOTAL: 1765 sq. ft**  
FLOOR 1: 785 sq. ft, FLOOR 2: 980 sq. ft  
EXCLUDED AREAS: GARAGE: 412 sq. ft, PORCH: 165 sq. ft, PATIO: 172 sq. ft,  
UNDEFINED: 11 sq. ft, OPEN TO BELOW: 158 sq. ft  
MEASUREMENTS CALCULATED BY V1Photos.com ARE DEEMED HIGHLY RELIABLE BUT NOT GUARANTEED.



Disclaimer: Sizes and Dimensions are Approximate, Actual May Vary.

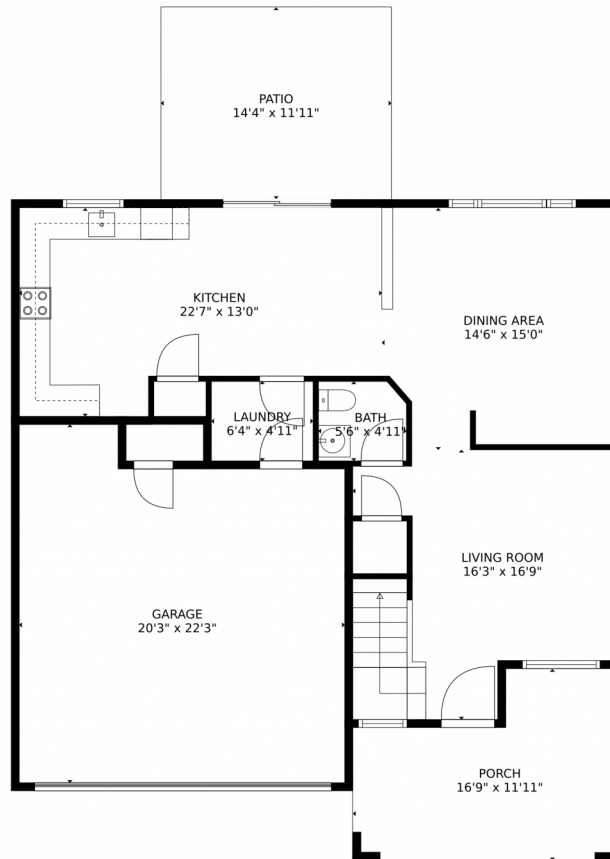


**Jordan Kermes**  
952-956-2958  
jkermes@wedgewoodhomesrealty.com  
<https://colorado.wedgewoodhomesrealty.com>



Scan code  
for more  
property  
details





**TOTAL: 1765 sq. ft**  
FLOOR 1: 785 sq. ft, FLOOR 2: 980 sq. ft  
EXCLUDED AREAS: GARAGE: 412 sq. ft, PORCH: 165 sq. ft, PATIO: 172 sq. ft,  
UNDEFINED: 11 sq. ft, OPEN TO BELOW: 158 sq. ft

MEASUREMENTS CALCULATED BY V1Photos.com ARE DEEMED HIGHLY RELIABLE BUT NOT GUARANTEED.



Disclaimer: Sizes and Dimensions are Approximate, Actual May Vary.



**Jordan Kermes**

952-956-2958

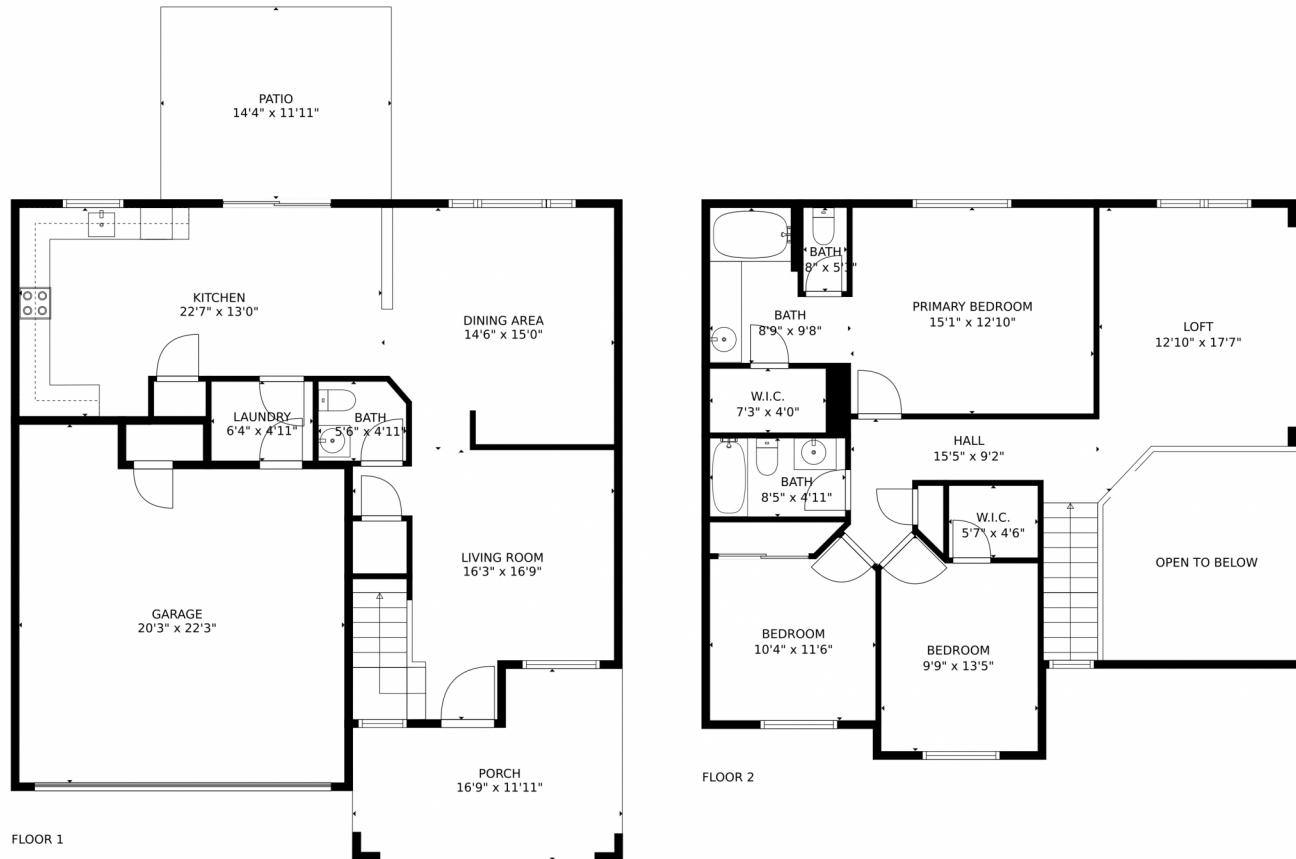
[jkermes@wedgewoodhomesrealty.com](mailto:jkermes@wedgewoodhomesrealty.com)

<https://colorado.wedgewoodhomesrealty.com>



Scan code  
for more  
property  
details





**TOTAL: 1765 sq. ft**  
FLOOR 1: 785 sq. ft, FLOOR 2: 980 sq. ft  
EXCLUDED AREAS: GARAGE: 412 sq. ft, PORCH: 165 sq. ft, PATIO: 172 sq. ft,  
UNDEFINED: 11 sq. ft, OPEN TO BELOW: 158 sq. ft  
MEASUREMENTS CALCULATED BY V1Photos.COM ARE DEEMED HIGHLY RELIABLE BUT NOT GUARANTEED.



Disclaimer: Sizes and Dimensions are Approximate, Actual May Vary.



**Jordan Kermes**  
952-956-2958  
jkermes@wedgewoodhomesrealty.com  
<https://colorado.wedgewoodhomesrealty.com>



Scan code  
for more  
property  
details

