



17366 Hop Clover Avenue
Parker, CO 80134



Single Family



2145 SQFT



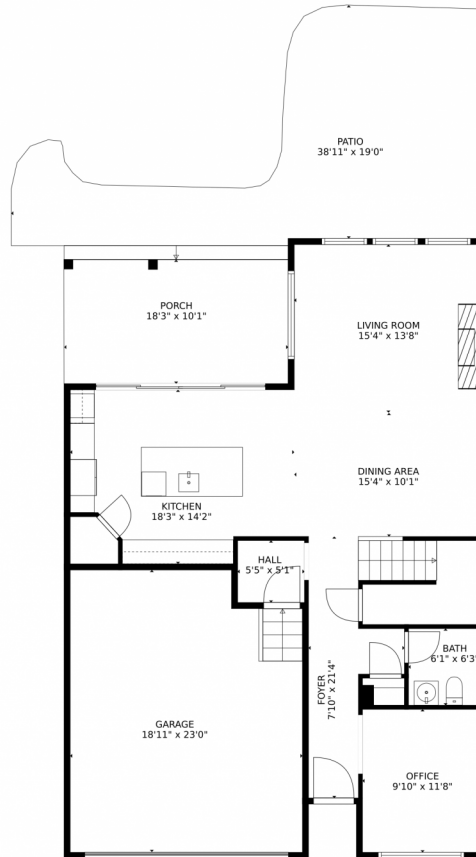
Amber Wermerskirchen
720-560-9772
amber@thewrealestategroup.com



Scan code
for more
property
details



17366 Hop Clover Avenue, Parker, CO 80134 – Main Level



TOTAL: 2072 sq. ft
FLOOR 1: 992 sq. ft, FLOOR 2: 1080 sq. ft
EXCLUDED AREAS: PORCH: 185 sq. ft, PATIO: 436 sq. ft, GARAGE: 418 sq. ft,
EMBEDDED WINDOW: 7 sq. ft

MEASUREMENTS CALCULATED BY V1Photos.com ARE DEEMED HIGHLY RELIABLE BUT NOT GUARANTEED.



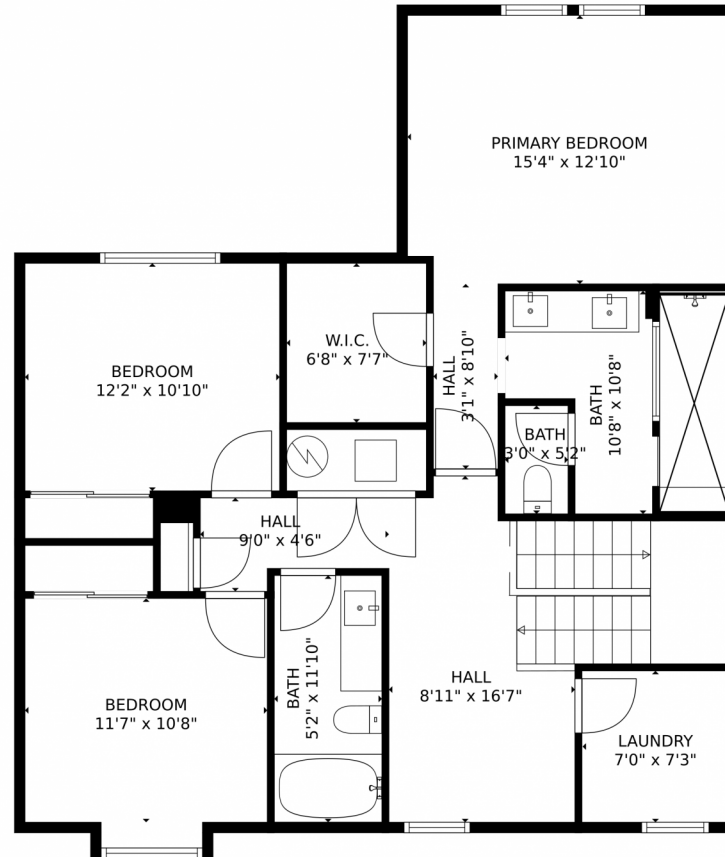
Disclaimer: Sizes and Dimensions are Approximate, Actual May Vary.



Amber Wermerskirchen
720-560-9772
amber@thewrealestategroup.com



17366 Hop Clover Avenue, Parker, CO 80134 – Upper Level



TOTAL: 2072 sq. ft
FLOOR 1: 992 sq. ft, FLOOR 2: 1080 sq. ft
EXCLUDED AREAS: PORCH: 185 sq. ft, PATIO: 436 sq. ft, GARAGE: 418 sq. ft,
EMBEDDED WINDOW: 7 sq. ft
MEASUREMENTS CALCULATED BY V1Photos.com ARE DEEMED HIGHLY RELIABLE BUT NOT GUARANTEED.



Disclaimer: Sizes and Dimensions are Approximate, Actual May Vary.



Amber Wermerskirchen
720-560-9772
amber@thewrealestategroup.com



17366 Hop Clover Avenue, Parker, CO 80134 – All Levels



TOTAL: 2072 sq. ft
FLOOR 1: 992 sq. ft, FLOOR 2: 1080 sq. ft
EXCLUDED AREAS: PORCH: 185 sq. ft, PATIO: 436 sq. ft, GARAGE: 418 sq. ft,
EMBEDDED WINDOW: 7 sq. ft

MEASUREMENTS CALCULATED BY V1Photos.COM ARE DEEMED HIGHLY RELIABLE BUT NOT GUARANTEED.



Disclaimer: Sizes and Dimensions are Approximate, Actual May Vary.



Amber Wermerskirchen
720-560-9772
amber@thewrealestategroup.com

