

Single Family



2765 SQFT



3 Beds



2/1 Baths



1 Acre



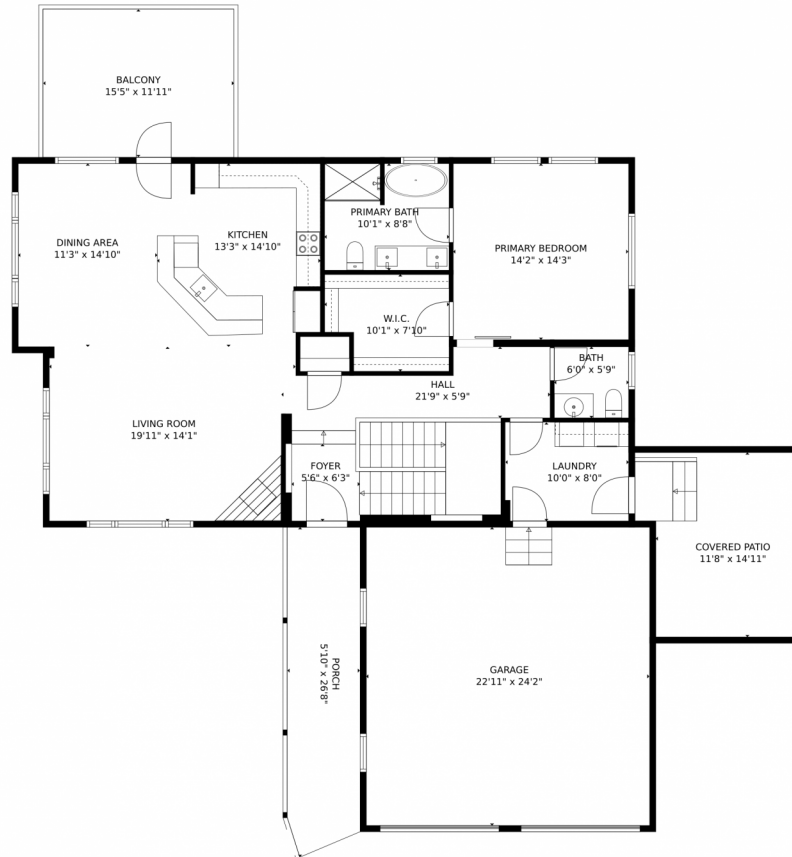
**Kelly Dolph**  
303-912-0937  
kellydolph@kw.com



Scan code  
for more  
property  
details



# 13179 Elsie Rd, Conifer, CO 80433 – Main Level



**TOTAL: 2662 sq. ft**  
Below Ground: 1266 sq. ft, FLOOR 2: 1396 sq. ft  
EXCLUDED AREAS: STORAGE: 76 sq. ft, PATIO: 227 sq. ft, GARAGE: 555 sq. ft,  
COVERED PATIO: 184 sq. ft, PORCH: 151 sq. ft, BALCONY: 186 sq. ft  
MEASUREMENTS CALCULATED BY V1Photos.com ARE DEEMED HIGHLY RELIABLE BUT NOT GUARANTEED.



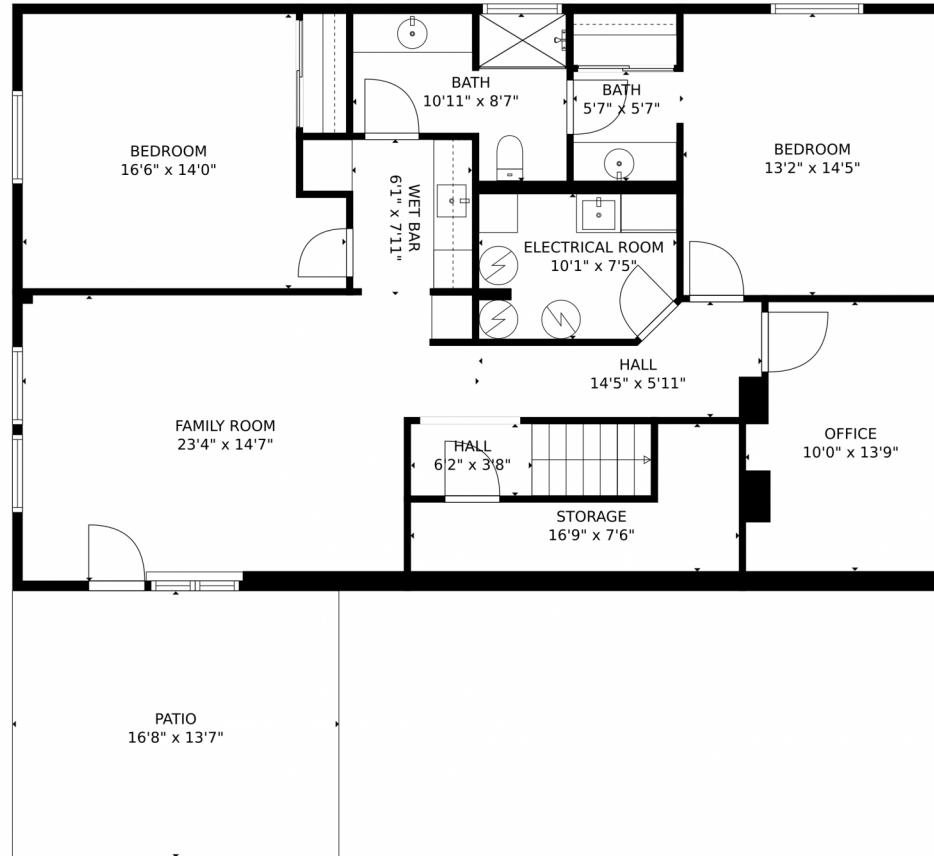
Disclaimer: Sizes and Dimensions are Approximate, Actual May Vary.



**Kelly Dolph**  
303-912-0937  
kellydolph@kw.com



# 13179 Elsie Rd, Conifer, CO 80433 – Lower Level



**TOTAL: 2662 sq. ft**  
Below Ground: 1266 sq. ft, FLOOR 2: 1396 sq. ft  
EXCLUDED AREAS: STORAGE: 76 sq. ft, PATIO: 227 sq. ft, GARAGE: 555 sq. ft,  
COVERED PATIO: 184 sq. ft, PORCH: 151 sq. ft, BALCONY: 186 sq. ft  
MEASUREMENTS CALCULATED BY V1Photos.com ARE DEEMED HIGHLY RELIABLE BUT NOT GUARANTEED.



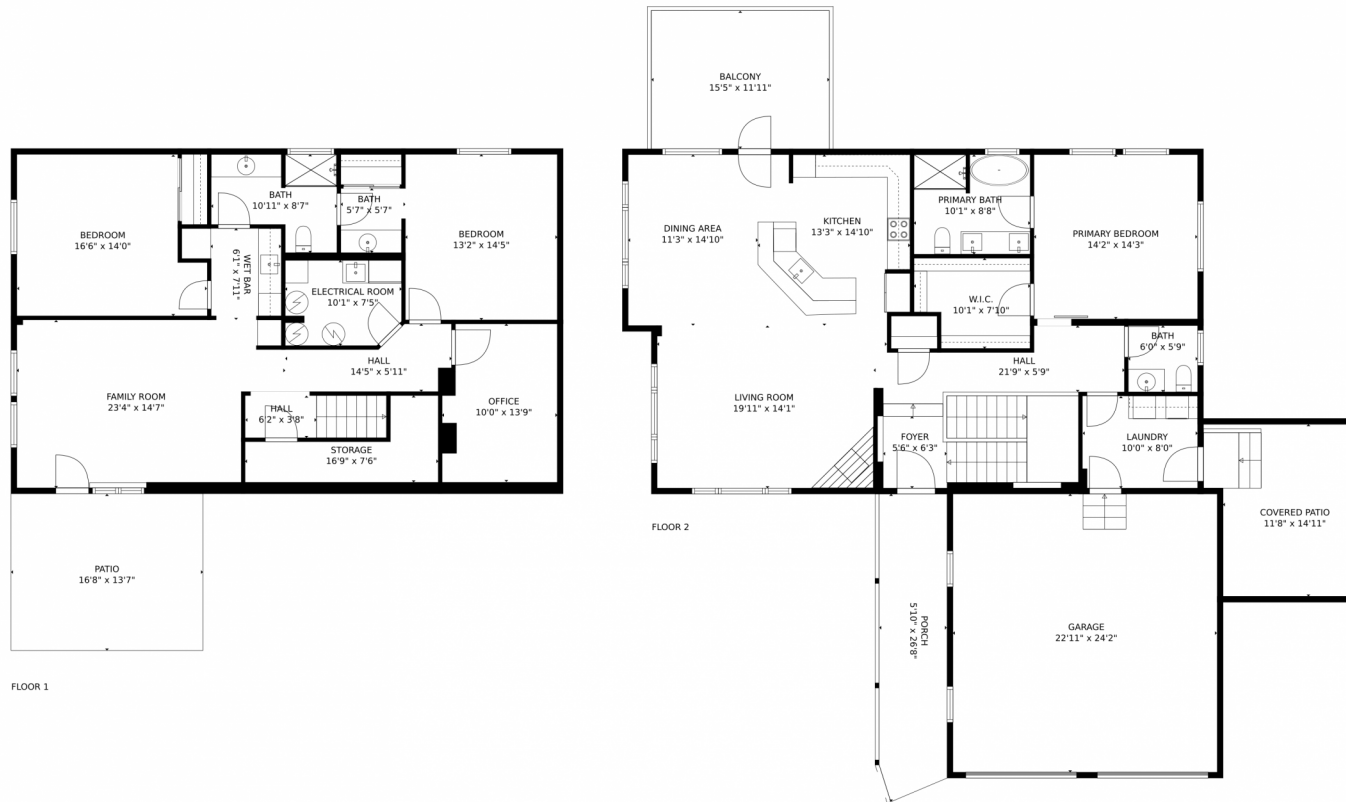
Disclaimer: Sizes and Dimensions are Approximate, Actual May Vary.



**Kelly Dolph**  
303-912-0937  
kellydolph@kw.com



# 13179 Elsie Rd, Conifer, CO 80433 – All Levels



**TOTAL: 2662 sq. ft**  
Below Ground: 1266 sq. ft, FLOOR 2: 1396 sq. ft  
EXCLUDED AREAS: STORAGE: 76 sq. ft, PATIO: 227 sq. ft, GARAGE: 555 sq. ft,  
COVERED PATIO: 184 sq. ft, PORCH: 151 sq. ft, BALCONY: 186 sq. ft  
MEASUREMENTS CALCULATED BY V1Photos.com ARE DEEMED HIGHLY RELIABLE BUT NOT GUARANTEED.



Disclaimer: Sizes and Dimensions are Approximate, Actual May Vary.



**Kelly Dolph**  
303-912-0937  
kellydolph@kw.com



Scan code  
for more  
property  
details

