



5235 Silver Hare Court
 Castle Rock, CO 80104
 COMMUNITY: Crystal Valley Ranch

MLS # 3242043
 PRICE \$924,900



Single Family 4861 SQFT 4 Beds 3 Baths 2 Car 0.16 Acre

PROPERTY DETAILS

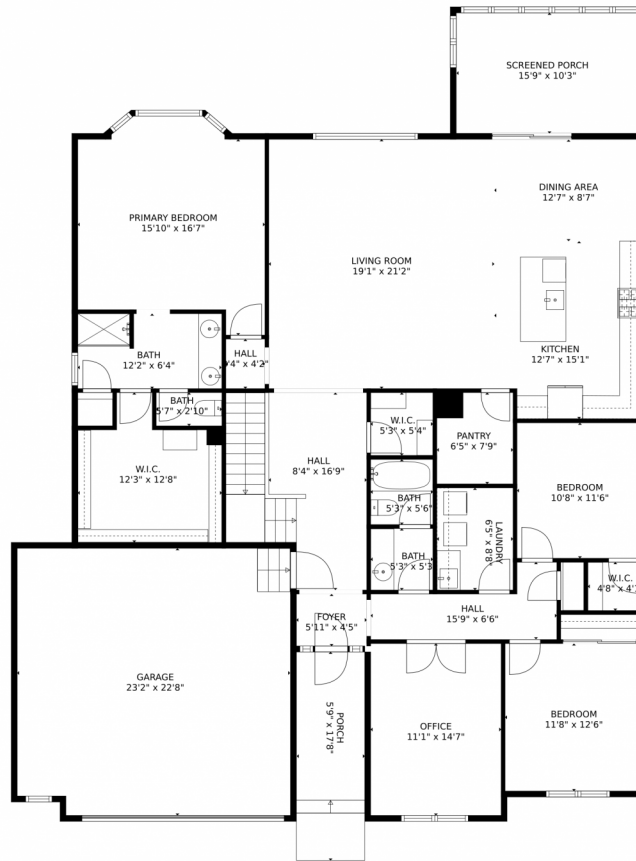
Welcome to this stunning property in Crystal Valley Ranch. This spacious home offers 4 bedrooms, 3 bathrooms, and 2 offices. With over 3911 square feet, there's plenty of space for relaxation and entertainment. The open floor plan and oversized kitchen make it perfect for gatherings. The bedrooms are well-appointed for rest and privacy. The home also features a sunroom with dual pane windows and a gas grill. The basement has an office, bedroom, and full bath. The property includes a 2.5-car garage and is nestled on the Green Belt with lots of privacy. Crystal Valley Ranch offers parks, trails, and a clubhouse. Don't miss out, book your showing today!

Jason Dodd
 720-317-7054
 Jasonod@exitrealttydc.com

Scan code for more property details



5235 Silver Hare Court, Castle Rock, CO 80104 – Main Level



TOTAL: 3464 sq. ft

Below Ground: 1248 sq. ft, FLOOR 2: 2216 sq. ft

EXCLUDED AREAS: PORCH: 266 sq. ft, PATIO: 455 sq. ft, STORAGE: 94 sq. ft,

BASEMENT: 802 sq. ft, GARAGE: 517 sq. ft, SCREENED PORCH: 162 sq. ft

MEASUREMENTS CALCULATED BY V1Photos.COM ARE DEEMED HIGHLY RELIABLE BUT NOT GUARANTEED.



Disclaimer: Sizes and Dimensions are Approximate, Actual May Vary.



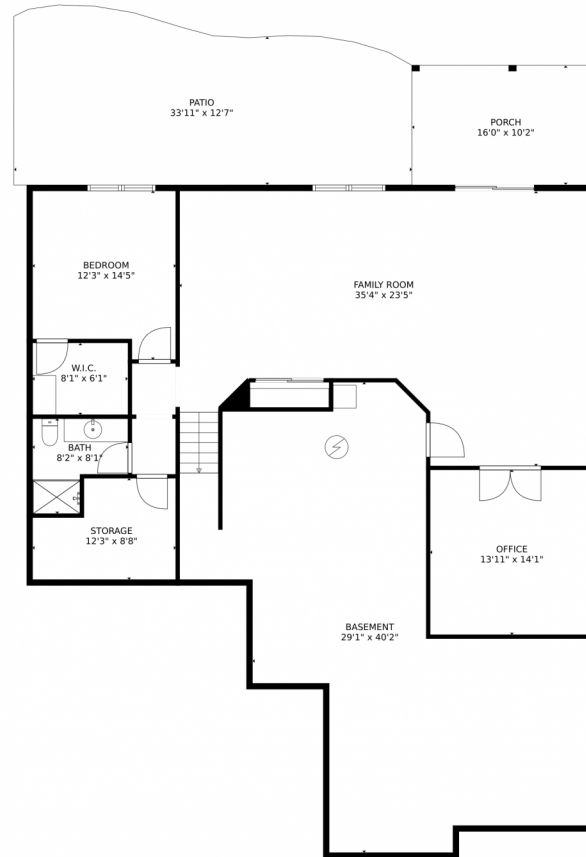
Jason Dodd
720-317-7054
Jasond@exitrealttyd.com



Scan code
for more
property
details



5235 Silver Hare Court, Castle Rock, CO 80104 — Lower Level



TOTAL: 3464 sq. ft
Below Ground: 1248 sq. ft, FLOOR 2: 2216 sq. ft
EXCLUDED AREAS: PORCH: 266 sq. ft, PATIO: 455 sq. ft, STORAGE: 94 sq. ft,
BASEMENT: 802 sq. ft, GARAGE: 517 sq. ft, SCREENED PORCH: 162 sq. ft
MEASUREMENTS CALCULATED BY V1Photos.com ARE DEEMED HIGHLY RELIABLE BUT NOT GUARANTEED.



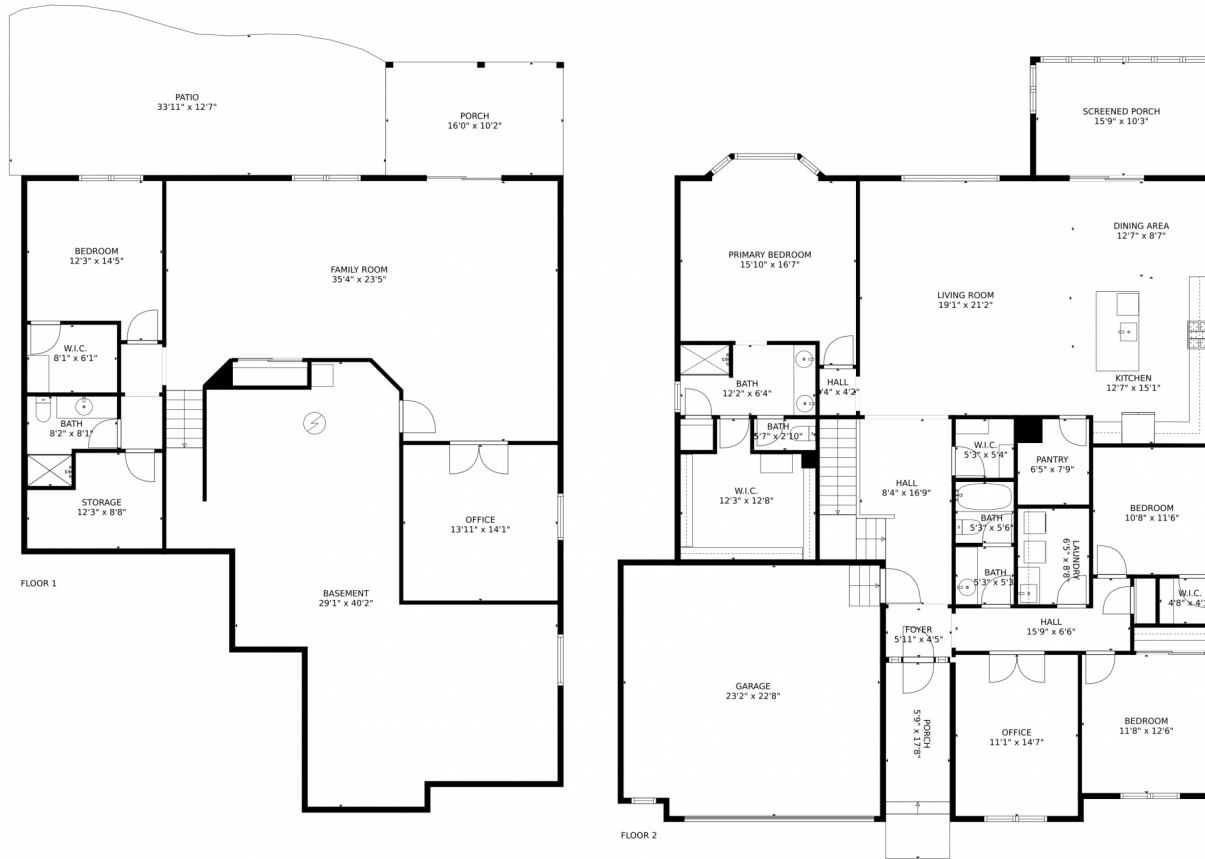
Disclaimer: Sizes and Dimensions are Approximate, Actual May Vary.



Jason Dodd
720-317-7054
Jasond@exitrealttydc.com



5235 Silver Hare Court, Castle Rock, CO 80104 – All Levels



TOTAL: 3464 sq. ft
Below Ground: 1248 sq. ft, FLOOR 2: 2216 sq. ft
EXCLUDED AREAS: PORCH: 266 sq. ft, PATIO: 455 sq. ft, STORAGE: 94 sq. ft,
BASEMENT: 802 sq. ft, GARAGE: 517 sq. ft, SCREENED PORCH: 162 sq. ft
MEASUREMENTS CALCULATED BY V1Photos.com ARE DEEMED HIGHLY RELIABLE BUT NOT GUARANTEED.



Disclaimer: Sizes and Dimensions are Approximate, Actual May Vary.



Jason Dodd
720-317-7054
Jasond@exitrealttydte.com

