



17504 East Caspian Place  
Aurora, CO 80013



Single Family



2686 SQFT



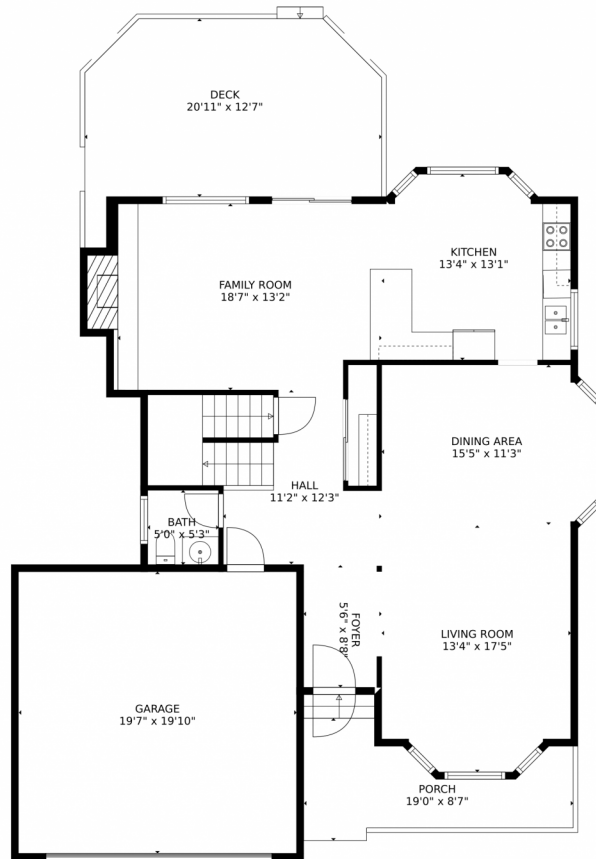
**Laura Morreale**  
303-775-7749  
laura@dwellingscolorado.com



Scan code  
for more  
property  
details



# 17504 East Caspian Place, Aurora, CO 80013 – 1st Floor



**TOTAL: 2564 sq. ft**  
Below Ground: 520 sq. ft, FLOOR 2: 1058 sq. ft, FLOOR 3: 986 sq. ft  
EXCLUDED AREAS: GARAGE: 390 sq. ft, PORCH: 113 sq. ft, DECK: 253 sq. ft,  
FIREPLACE: 7 sq. ft, OPEN TO BELOW: 245 sq. ft

MEASUREMENTS CALCULATED BY V1Photos.com ARE DEEMED HIGHLY RELIABLE BUT NOT GUARANTEED.



Disclaimer: Sizes and Dimensions are Approximate, Actual May Vary.



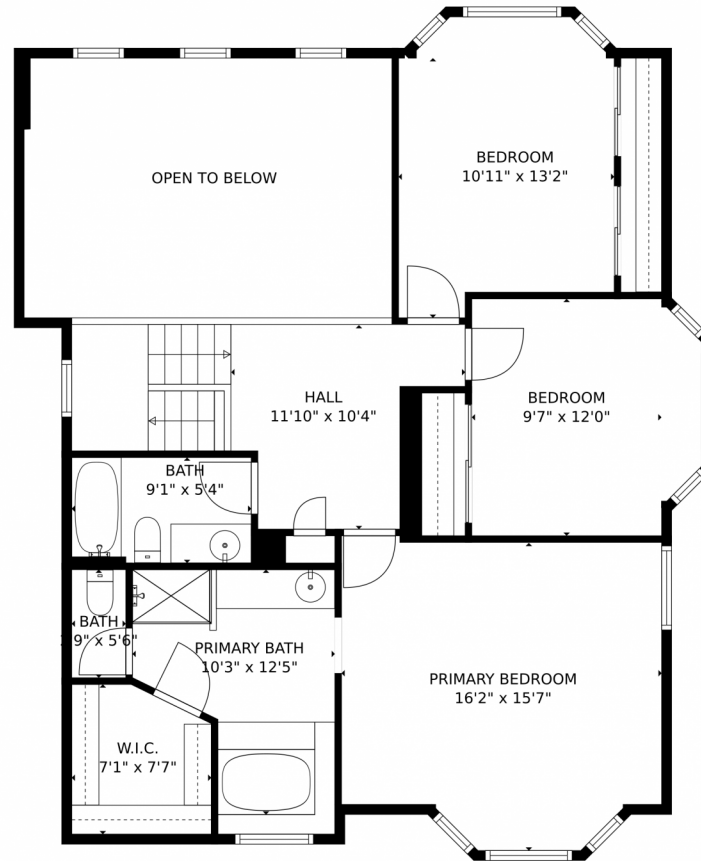
**Laura Morreale**  
303-775-7749  
laura@dwellingcolorado.com



Scan code  
for more  
property  
details



17504 East Caspian Place, Aurora, CO 80013 – 2nd Floor



**TOTAL: 2564 sq. ft**  
Below Ground: 520 sq. ft, FLOOR 2: 1058 sq. ft, FLOOR 3: 986 sq. ft  
EXCLUDED AREAS: GARAGE: 390 sq. ft, PORCH: 113 sq. ft, DECK: 253 sq. ft,  
FIREPLACE: 7 sq. ft, OPEN TO BELOW: 245 sq. ft  
MEASUREMENTS CALCULATED BY V1Photos.com ARE DEEMED HIGHLY RELIABLE BUT NOT GUARANTEED.



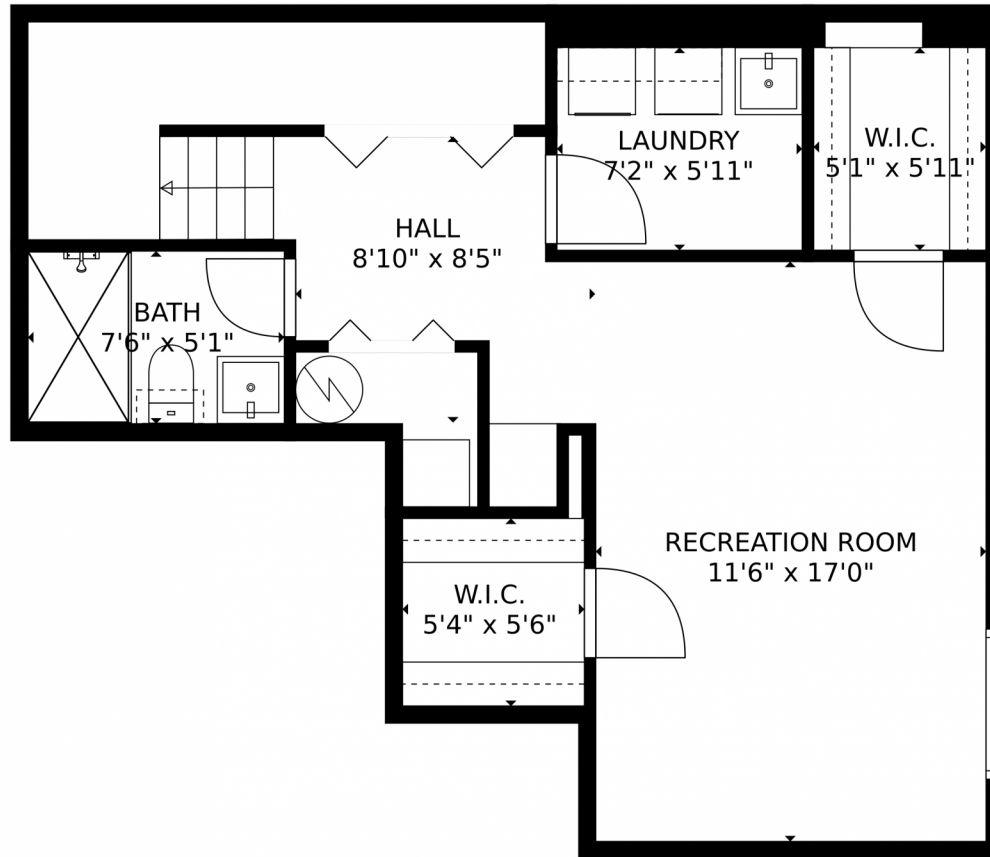
Disclaimer: Sizes and Dimensions are Approximate, Actual May Vary.



**Laura Morreale**  
303-775-7749  
laura@dwellingcolorado.com



17504 East Caspian Place, Aurora, CO 80013 – Basement



**TOTAL: 2564 sq. ft**  
Below Ground: 520 sq. ft, FLOOR 2: 1058 sq. ft, FLOOR 3: 986 sq. ft  
EXCLUDED AREAS: GARAGE: 390 sq. ft, PORCH: 113 sq. ft, DECK: 253 sq. ft,  
FIREPLACE: 7 sq. ft, OPEN TO BELOW: 245 sq. ft  
MEASUREMENTS CALCULATED BY V1Photos.com ARE DEEMED HIGHLY RELIABLE BUT NOT GUARANTEED.



Disclaimer: Sizes and Dimensions are Approximate, Actual May Vary.



**Laura Morreale**  
303-775-7749  
laura@dwellingcolorado.com



# 17504 East Caspian Place, Aurora, CO 80013 – All Floors



**TOTAL: 2564 sq. ft**

Below Ground: 520 sq. ft, FLOOR 2: 1058 sq. ft, FLOOR 3: 986 sq. ft  
EXCLUDED AREAS: GARAGE: 390 sq. ft, PORCH: 113 sq. ft, DECK: 253 sq. ft,  
FIREPLACE: 7 sq. ft, OPEN TO BELOW: 245 sq. ft

MEASUREMENTS CALCULATED BY V1Photos.com ARE DEEMED HIGHLY RELIABLE BUT NOT GUARANTEED.



Disclaimer: Sizes and Dimensions are Approximate, Actual May Vary.



**Laura Morreale**  
303-775-7749  
laura@dwellingcolorado.com



Scan code  
for more  
property  
details

