



Townhouse



2791 SQFT



4 Beds



4 Baths



2 Car



0.11 Acre



Beth Gibson
720-849-3577
bethgibson@kw.com
<https://bethgibson.kw.com/>



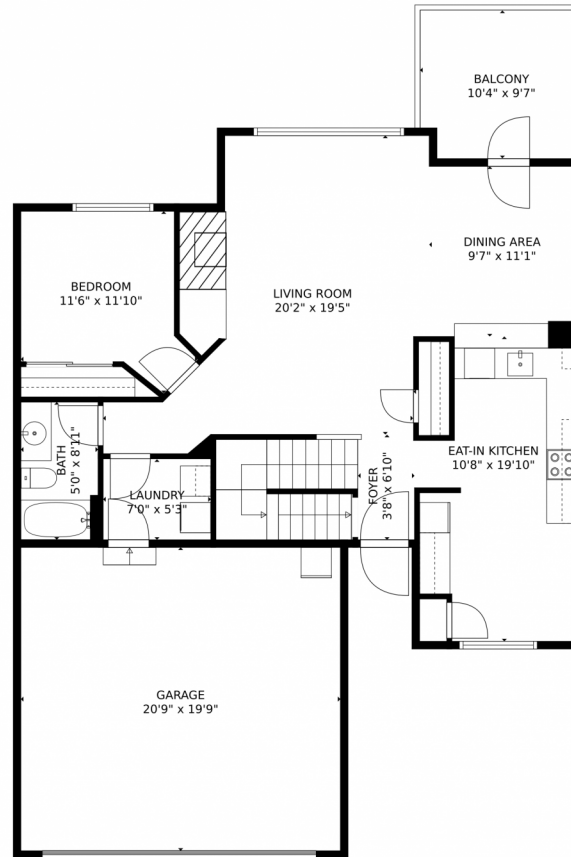
Phil Gibson
303-325-6020
philgibson@kw.com



Scan code
for more
property
details



7601 South Quatar Way, Aurora, CO 80016 – Main Level



TOTAL: 2313 sq. ft

Below Ground: 675 sq. ft, FLOOR 2: 933 sq. ft, FLOOR 3: 705 sq. ft
EXCLUDED AREAS: STORAGE: 64 sq. ft, ELECTRICAL ROOM: 89 sq. ft, GARAGE: 409 sq. ft,
BALCONY: 98 sq. ft

MEASUREMENTS CALCULATED BY V1Photos.com ARE DEEMED HIGHLY RELIABLE BUT NOT GUARANTEED.



Disclaimer: Sizes and Dimensions are Approximate, Actual May Vary.



Beth Gibson
720-849-3577
bethgibson@kw.com
<https://bethgibson.kw.com/>

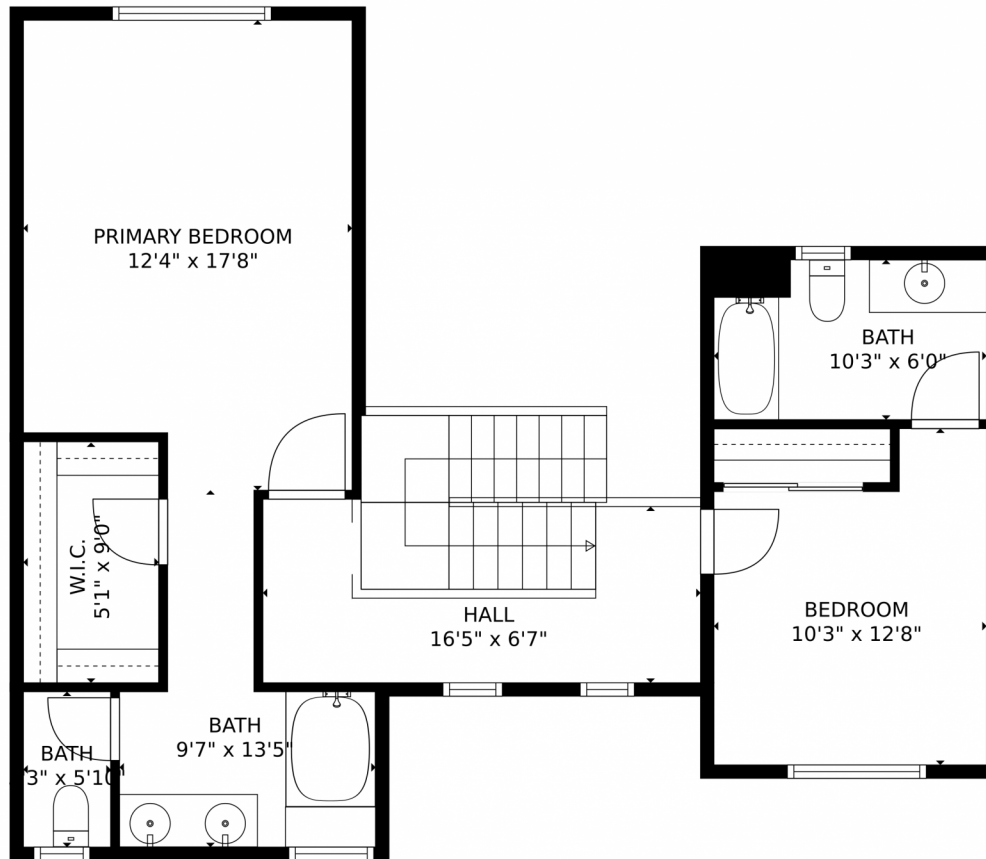


Phil Gibson
303-325-6020
philgibson@kw.com



Scan code
for more
property
details

7601 South Quatar Way, Aurora, CO 80016 – Second Level



TOTAL: 2313 sq. ft
Below Ground: 675 sq. ft, FLOOR 2: 933 sq. ft, FLOOR 3: 705 sq. ft
EXCLUDED AREAS: STORAGE: 64 sq. ft, ELECTRICAL ROOM: 89 sq. ft, GARAGE: 409 sq. ft,
BALCONY: 98 sq. ft

MEASUREMENTS CALCULATED BY V1Photos.com ARE DEEMED HIGHLY RELIABLE BUT NOT GUARANTEED.



Disclaimer: Sizes and Dimensions are Approximate, Actual May Vary.



Beth Gibson
720-849-3577
bethgibson@kw.com
<https://bethgibson.kw.com/>

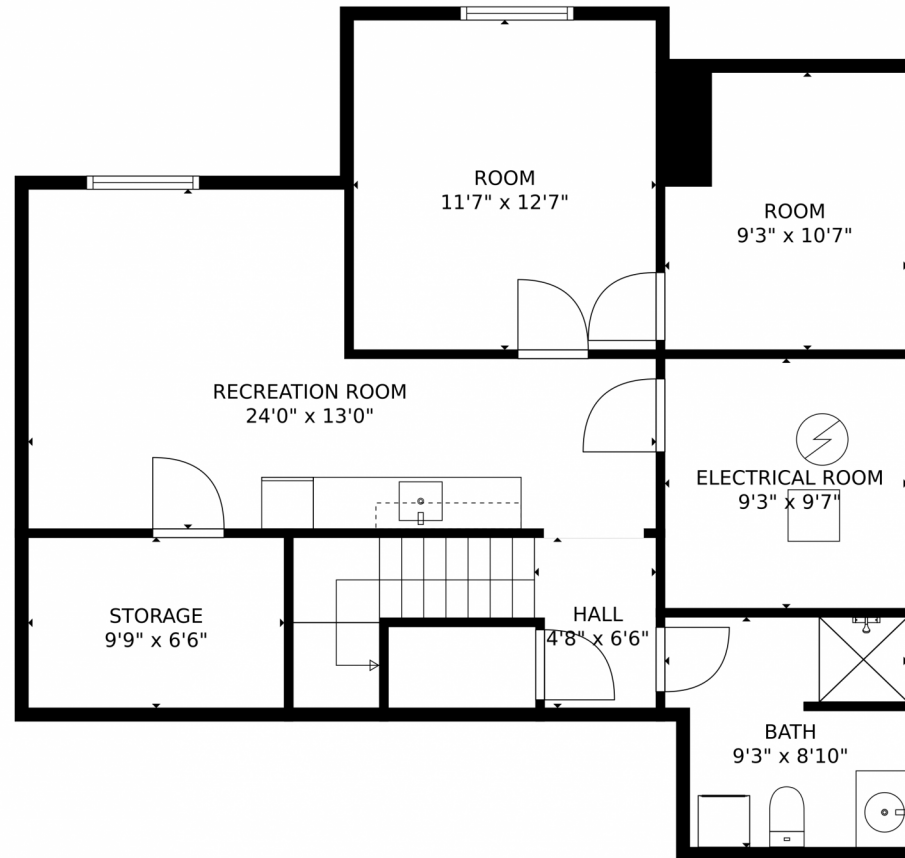


Phil Gibson
303-325-6020
philgibson@kw.com



Scan code
for more
property
details

7601 South Quatar Way, Aurora, CO 80016 – Basement



TOTAL: 2313 sq. ft
Below Ground: 675 sq. ft, FLOOR 2: 933 sq. ft, FLOOR 3: 705 sq. ft
EXCLUDED AREAS: STORAGE: 64 sq. ft, ELECTRICAL ROOM: 89 sq. ft, GARAGE: 409 sq. ft,
BALCONY: 98 sq. ft

MEASUREMENTS CALCULATED BY V1Photos.com ARE DEEMED HIGHLY RELIABLE BUT NOT GUARANTEED.



Disclaimer: Sizes and Dimensions are Approximate, Actual May Vary.



Beth Gibson
720-849-3577
bethgibson@kw.com
<https://bethgibson.kw.com/>



Phil Gibson
303-325-6020
philgibson@kw.com



Scan code
for more
property
details

7601 South Quatar Way, Aurora, CO 80016 – All Levels



TOTAL: 2313 sq. ft
 Below Ground: 675 sq. ft, FLOOR 2: 933 sq. ft, FLOOR 3: 705 sq. ft
 EXCLUDED AREAS: STORAGE: 64 sq. ft, ELECTRICAL ROOM: 89 sq. ft, GARAGE: 409 sq. ft,
 BALCONY: 98 sq. ft

MEASUREMENTS CALCULATED BY V1Photos.com ARE DEEMED HIGHLY RELIABLE BUT NOT GUARANTEED.



Disclaimer: Sizes and Dimensions are Approximate, Actual May Vary.



Beth Gibson
 720-849-3577
 bethgibson@kw.com
<https://bethgibson.kw.com/>



Phil Gibson
 303-325-6020
 philgibson@kw.com

