

COMPASS

6126 Dunraven Road
Golden, CO 80403
COMMUNITY: North Table Mountain Village

MLS # 3419794
PRICE \$905,000



Single Family



3369 SQFT



3 Beds



3/1 Baths



3 Car



0.23 Acre

COMPASS

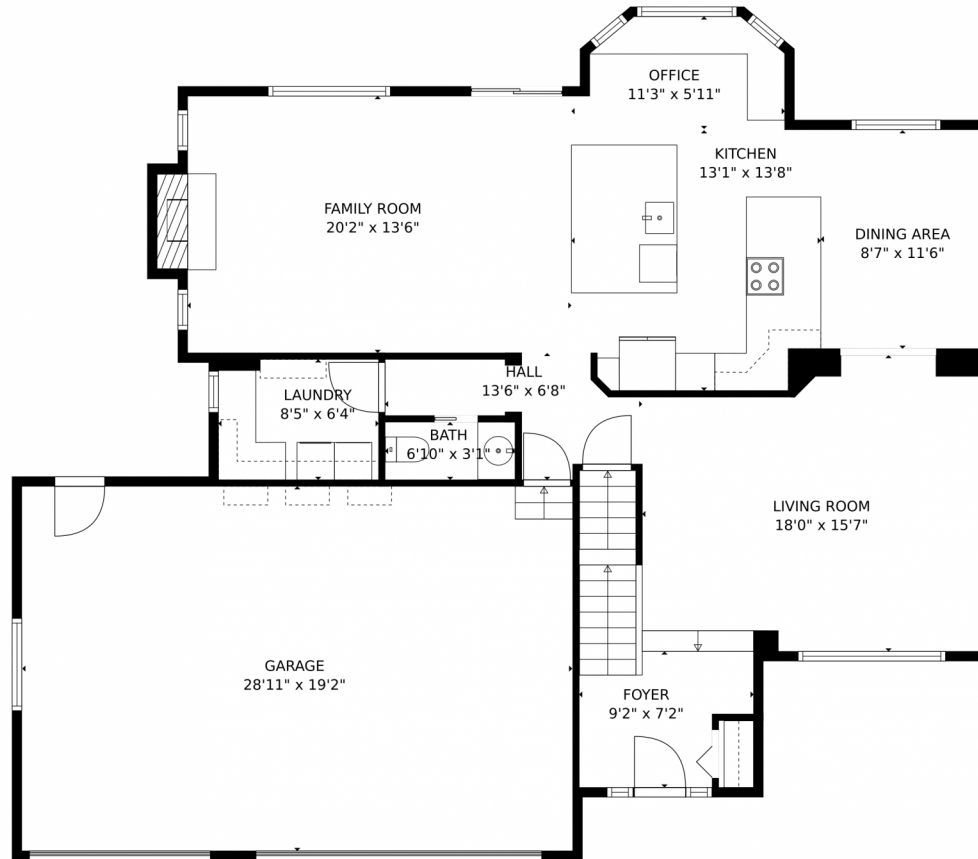
Clare Day
720-341-7456
homes@clare-day.com
<https://www.clareday.com/>



Scan code
for more
property
details



6126 Dunraven Road, Golden, CO 80403 — main level



TOTAL: 3058 sq. ft
Below Ground: 880 sq. ft, FLOOR 2: 1117 sq. ft, FLOOR 3: 1061 sq. ft
EXCLUDED AREAS: ELECTRICAL ROOM: 129 sq. ft, ROOM: 24 sq. ft, UNDEFINED: 4 sq. ft,
GARAGE: 557 sq. ft, FIREPLACE: 6 sq. ft, OPEN TO BELOW: 274 sq. ft

MEASUREMENTS CALCULATED BY V1Photos.com ARE DEEMED HIGHLY RELIABLE BUT NOT GUARANTEED.



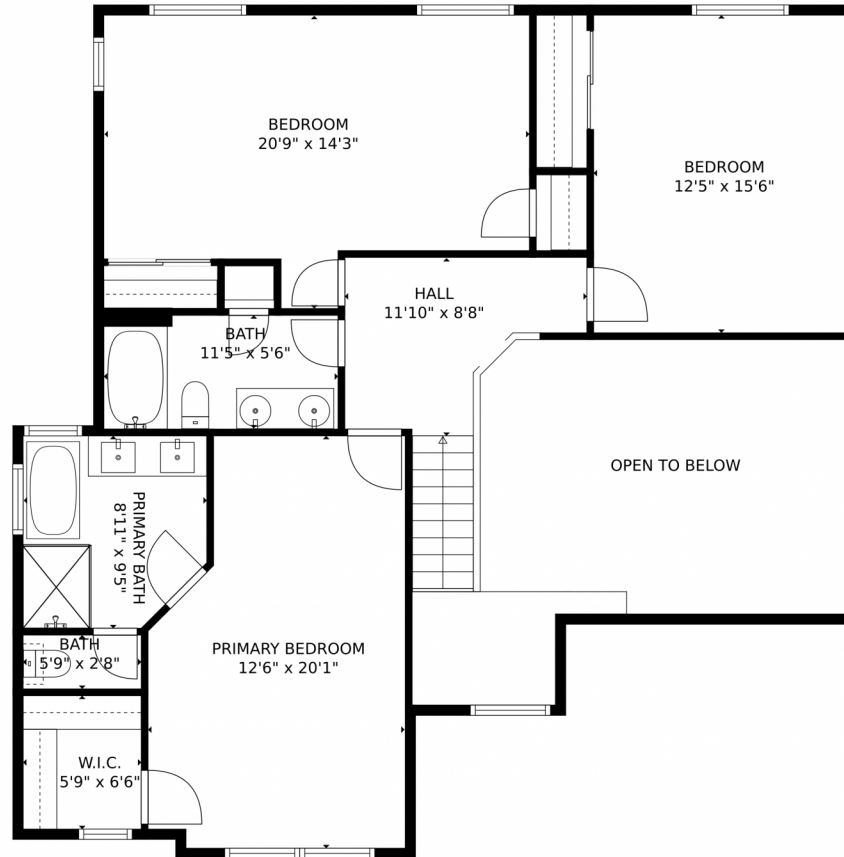
Disclaimer: Sizes and Dimensions are Approximate, Actual May Vary.



COMPASS
Clare Day
720-341-7456
homes@clare-day.com
<https://www.clareday.com/>



6126 Dunraven Road, Golden, CO 80403 — upper level



TOTAL: 3058 sq. ft
Below Ground: 880 sq. ft, FLOOR 2: 1117 sq. ft, FLOOR 3: 1061 sq. ft
EXCLUDED AREAS: ELECTRICAL ROOM: 129 sq. ft, ROOM: 24 sq. ft, UNDEFINED: 4 sq. ft,
GARAGE: 557 sq. ft, FIREPLACE: 6 sq. ft, OPEN TO BELOW: 274 sq. ft
MEASUREMENTS CALCULATED BY V1Photos.com ARE DEEMED HIGHLY RELIABLE BUT NOT GUARANTEED.

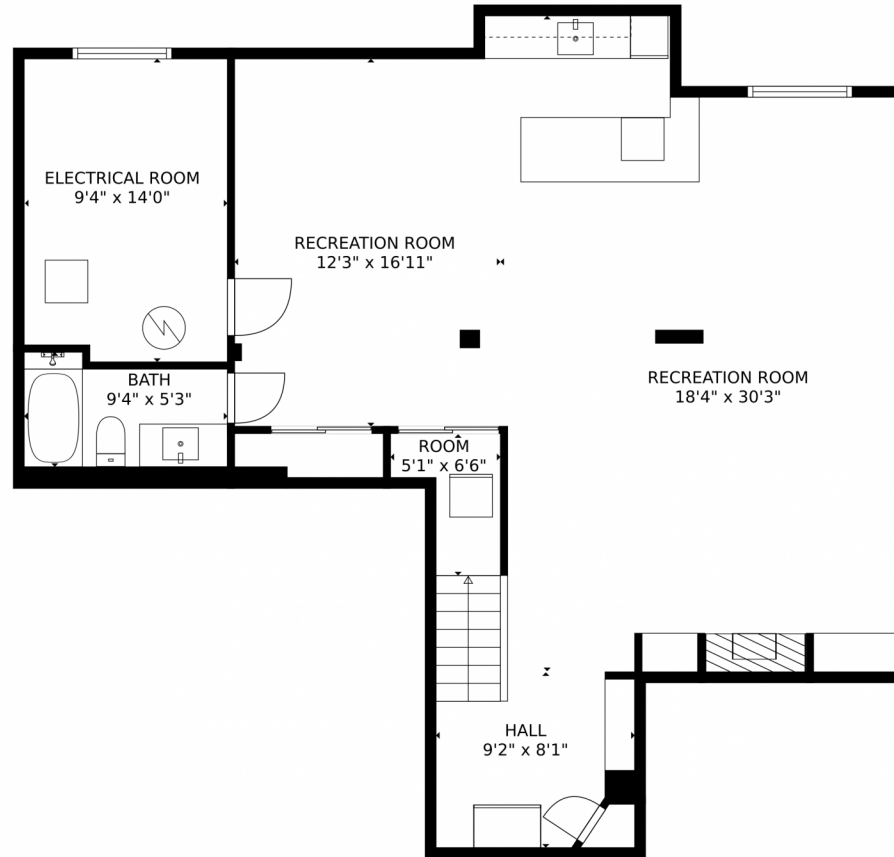


Disclaimer: Sizes and Dimensions are Approximate, Actual May Vary.

COMPASS
Clare Day
720-341-7456
homes@clare-day.com
<https://www.clareday.com/>



6126 Dunraven Road, Golden, CO 80403 – lower level

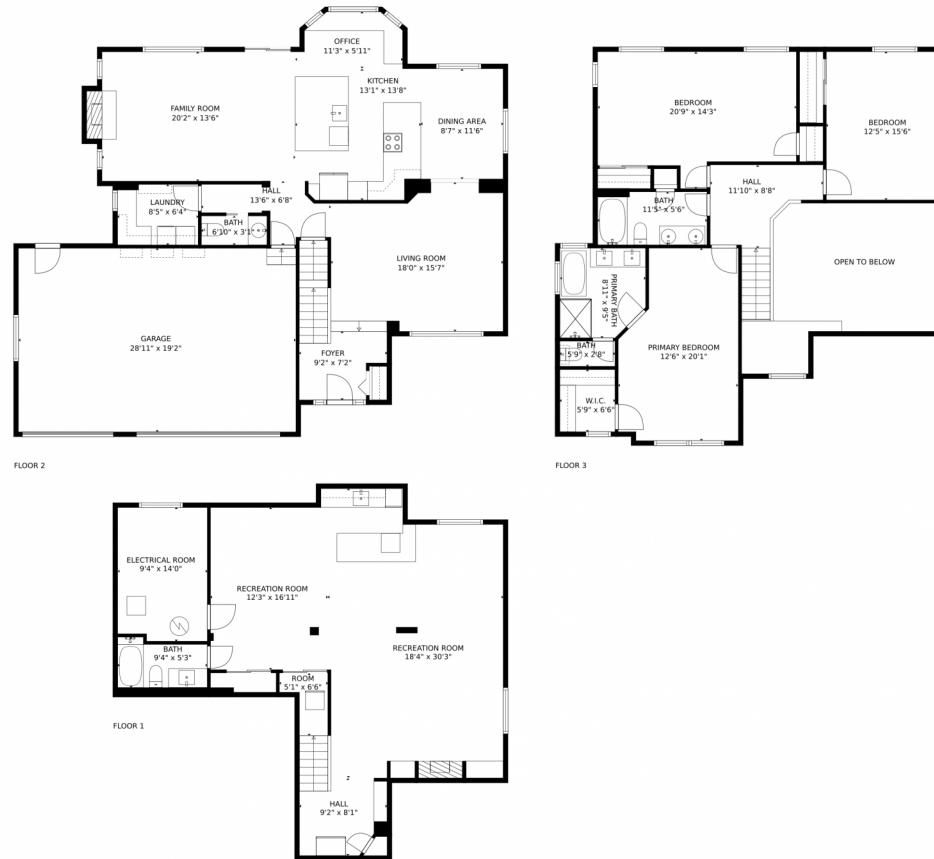


TOTAL: 3058 sq. ft
Below Ground: 880 sq. ft, FLOOR 2: 1117 sq. ft, FLOOR 3: 1061 sq. ft
EXCLUDED AREAS: ELECTRICAL ROOM: 129 sq. ft, ROOM: 24 sq. ft, UNDEFINED: 4 sq. ft,
GARAGE: 557 sq. ft, FIREPLACE: 6 sq. ft, OPEN TO BELOW: 274 sq. ft
MEASUREMENTS CALCULATED BY V1Photos.com ARE DEEMED HIGHLY RELIABLE BUT NOT GUARANTEED.



Disclaimer: Sizes and Dimensions are Approximate, Actual May Vary.

6126 Dunraven Road, Golden, CO 80403 — all levels



TOTAL: 3058 sq. ft

Below Ground: 880 sq. ft, FLOOR 2: 1117 sq. ft, FLOOR 3: 1061 sq. ft
EXCLUDED AREAS: ELECTRICAL ROOM: 129 sq. ft, ROOM: 24 sq. ft, UNDEFINED: 4 sq. ft,
GARAGE: 557 sq. ft, FIREPLACE: 6 sq. ft, OPEN TO BELOW: 274 sq. ft

MEASUREMENTS CALCULATED BY V1Photos.com ARE DEEMED HIGHLY RELIABLE BUT NOT GUARANTEED.



Disclaimer: Sizes and Dimensions are Approximate, Actual May Vary.

