




 Single Family

 4136 SQFT

 5 Beds

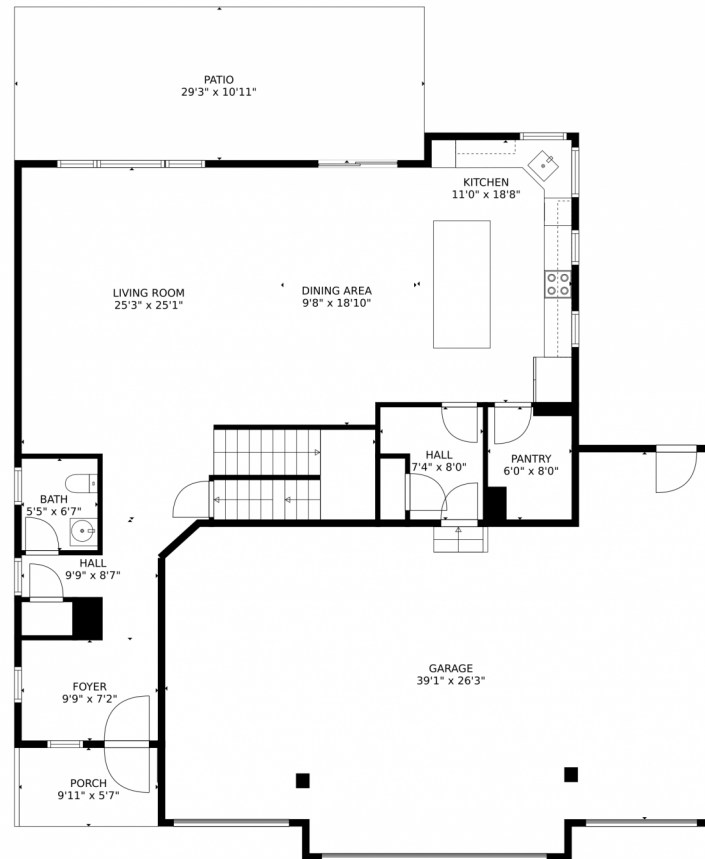
 3/1 Baths



Taylor Haas
 303-665-7368
 taylorh@coloradorpm.com
<https://www.coloradorpm.com/available-rental-properties-denver>



7646 Bigtooth Maple Drive, Colorado Springs, CO 80925 – Main Level



TOTAL: 3759 sq. ft
Below Ground: 927 sq. ft, FLOOR 2: 1164 sq. ft, FLOOR 3: 1668 sq. ft
EXCLUDED AREAS: ELECTRICAL ROOM: 54 sq. ft, LOW CEILING: 47 sq. ft, GARAGE: 908 sq. ft,
PORCH: 55 sq. ft, PATIO: 320 sq. ft, OPEN TO BELOW: 77 sq. ft

MEASUREMENTS CALCULATED BY V1Photos.com ARE DEEMED HIGHLY RELIABLE BUT NOT GUARANTEED.



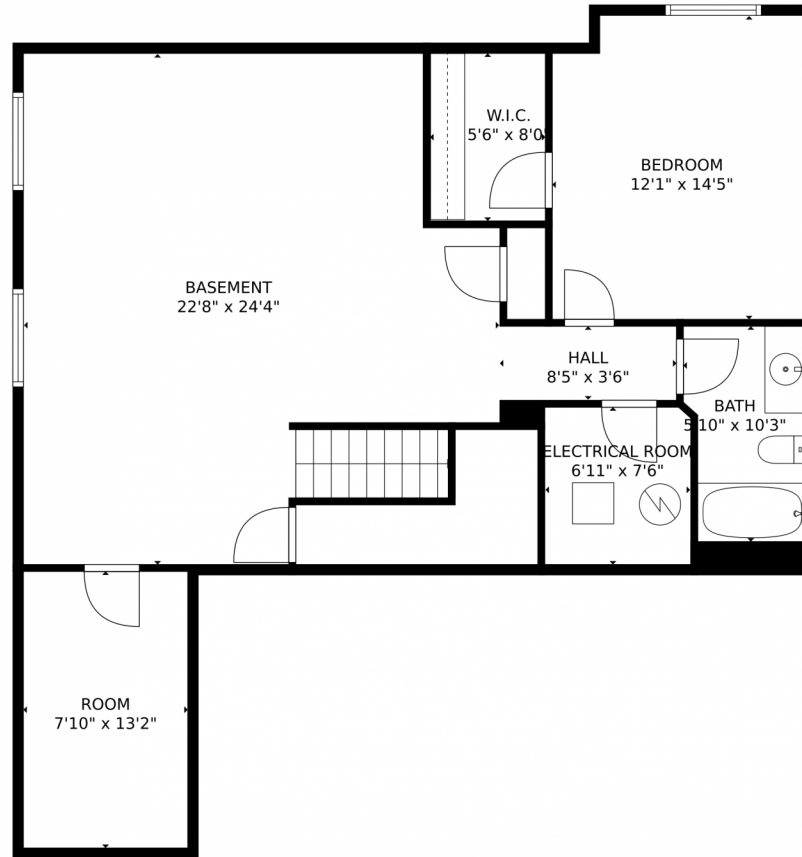
Disclaimer: Sizes and Dimensions are Approximate, Actual May Vary.



Taylor Haas
303-665-7368
taylorh@coloradorpm.com
<https://www.coloradorpm.com/available-rental-properties-denver>



7646 Bigtooth Maple Drive, Colorado Springs, CO 80925 – Lower Level



TOTAL: 3759 sq. ft
Below Ground: 927 sq. ft, FLOOR 2: 1164 sq. ft, FLOOR 3: 1668 sq. ft
EXCLUDED AREAS: ELECTRICAL ROOM: 54 sq. ft, LOW CEILING: 47 sq. ft, GARAGE: 908 sq. ft,
PORCH: 55 sq. ft, PATIO: 320 sq. ft, OPEN TO BELOW: 77 sq. ft

MEASUREMENTS CALCULATED BY V1Photos.com ARE DEEMED HIGHLY RELIABLE BUT NOT GUARANTEED.



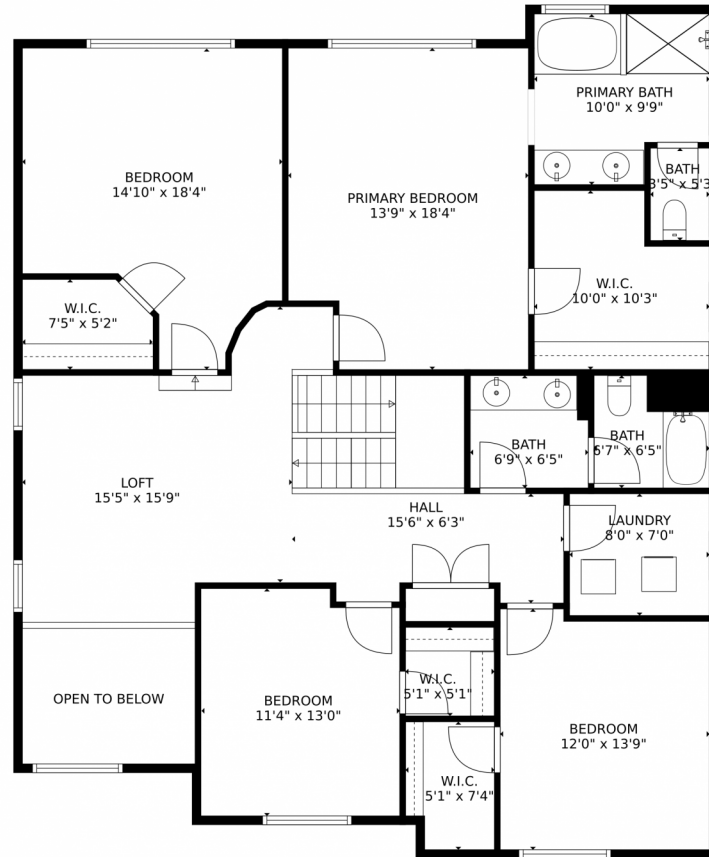
Disclaimer: Sizes and Dimensions are Approximate, Actual May Vary.



Taylor Haas
303-665-7368
taylorh@coloradorpm.com
<https://www.coloradorpm.com/available-rental-properties-denver>



7646 Bigtooth Maple Drive, Colorado Springs, CO 80925 – Upper Level



TOTAL: 3759 sq. ft
Below Ground: 927 sq. ft, FLOOR 2: 1164 sq. ft, FLOOR 3: 1668 sq. ft
EXCLUDED AREAS: ELECTRICAL ROOM: 54 sq. ft, LOW CEILING: 47 sq. ft, GARAGE: 908 sq. ft,
PORCH: 55 sq. ft, PATIO: 320 sq. ft, OPEN TO BELOW: 77 sq. ft

MEASUREMENTS CALCULATED BY V1Photos.com ARE DEEMED HIGHLY RELIABLE BUT NOT GUARANTEED.



Disclaimer: Sizes and Dimensions are Approximate, Actual May Vary.



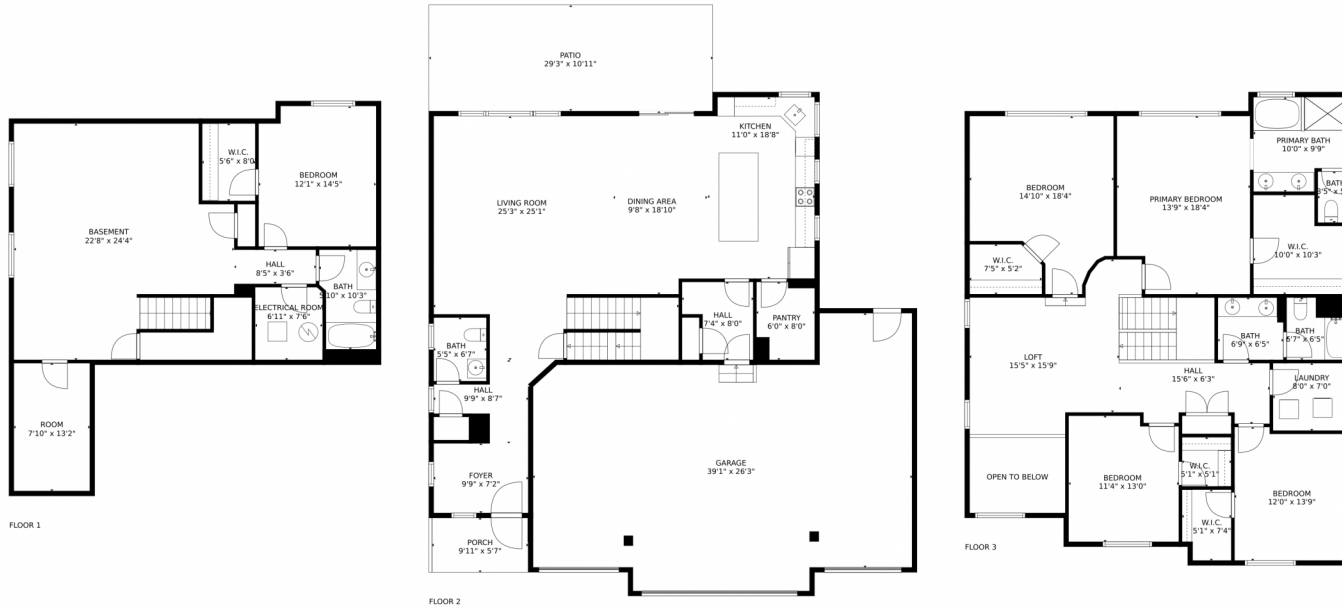
Taylor Haas
303-665-7368
taylorh@coloradorpm.com
<https://www.coloradorpm.com/available-rental-properties-denver>



Scan code
for more
property
details



7646 Bigtooth Maple Drive, Colorado Springs, CO 80925 – All Levels



TOTAL: 3759 sq. ft
Below Ground: 927 sq. ft, FLOOR 2: 1164 sq. ft, FLOOR 3: 1668 sq. ft
EXCLUDED AREAS: ELECTRICAL ROOM: 54 sq. ft, LOW CEILING: 47 sq. ft, GARAGE: 908 sq. ft,
PORCH: 55 sq. ft, PATIO: 320 sq. ft, OPEN TO BELOW: 77 sq. ft

MEASUREMENTS CALCULATED BY V1Photos.COM ARE DEEMED HIGHLY RELIABLE BUT NOT GUARANTEED.



Disclaimer: Sizes and Dimensions are Approximate, Actual May Vary.



Taylor Haas

303-665-7368

taylorh@coloradorpm.com

<https://www.coloradorpm.com/available-rental-properties-denver>



Scan code
for more
property
details

