



1527 S Flagler Drive
 West Palm Beach, FL 33401
 COMMUNITY: VIKING ARMS CONDO

MLS # R10977558
 PRICE \$419,000



Condominium



990 SQFT



2 Beds



2 Baths



1 Car

PROPERTY DETAILS

2BR/2FB condo on the Intercoastal, close to Palm Beach. Ready for new Owners to transform it.

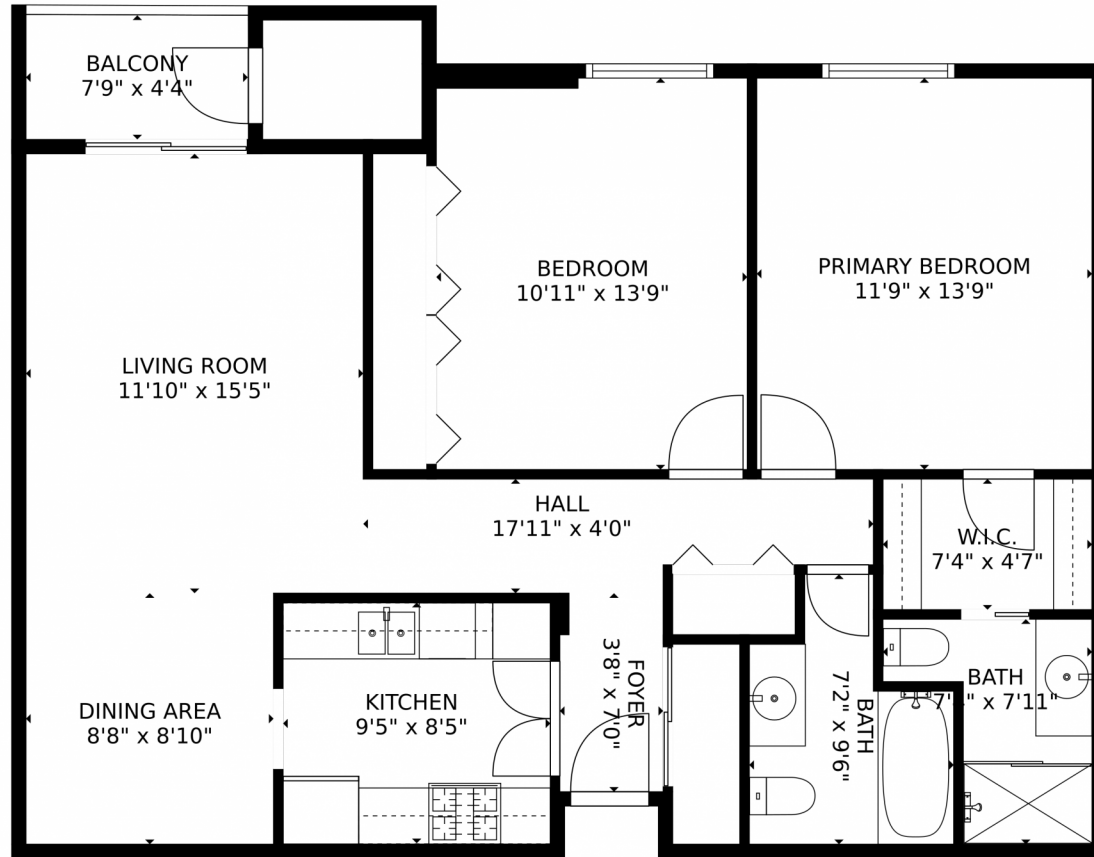


Jonathan Triandafilou
 301-938-9096
 jt@ebstonerealty.com



Scan code
 for more
 property
 details





TOTAL: 983 sq. ft
FLOOR 1: 983 sq. ft
EXCLUDED AREAS: BALCONY: 34 sq. ft

MEASUREMENTS CALCULATED BY V1Photos.com ARE DEEMED HIGHLY RELIABLE BUT NOT GUARANTEED.



Disclaimer: Sizes and Dimensions are Approximate, Actual May Vary.



Jonathan Triandafilou
301-938-9096
jt@ebstonerealty.com

