



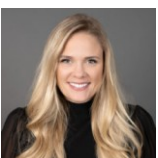
10325 East Cherrywood Drive
Parker, CO 80138



Single Family



2408 SQFT



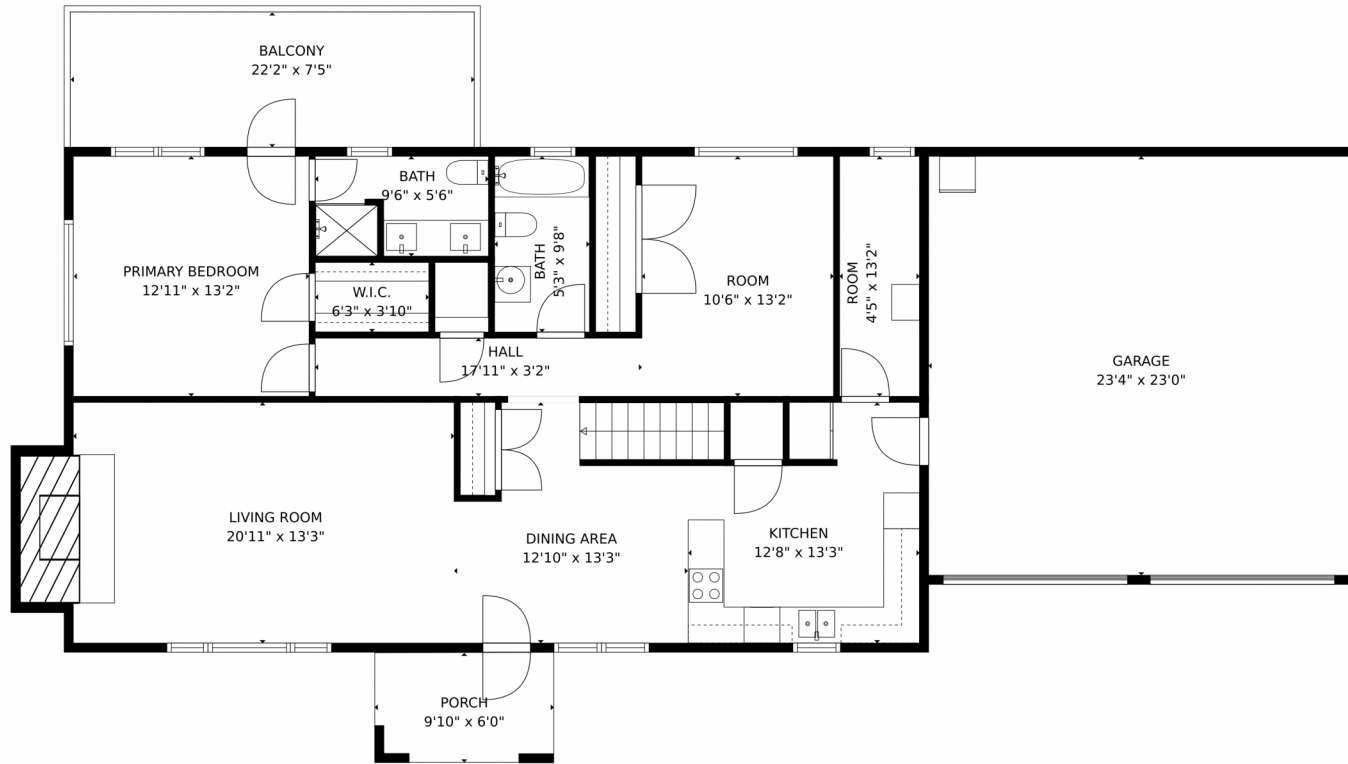
Andrea Price
303-956-9691
andrea@pricecohomes.com



Scan code
for more
property
details



10325 East Cherrywood Drive, Parker, CO 80138 – Main Level



TOTAL: 2341 sq. ft
Below Ground: 1094 sq. ft, FLOOR 2: 1247 sq. ft
EXCLUDED AREAS: UTILITY: 122 sq. ft, PATIO: 174 sq. ft, FIREPLACE: 40 sq. ft,
GARAGE: 538 sq. ft, PORCH: 59 sq. ft, BALCONY: 165 sq. ft
MEASUREMENTS CALCULATED BY V1Photos.com ARE DEEMED HIGHLY RELIABLE BUT NOT GUARANTEED.



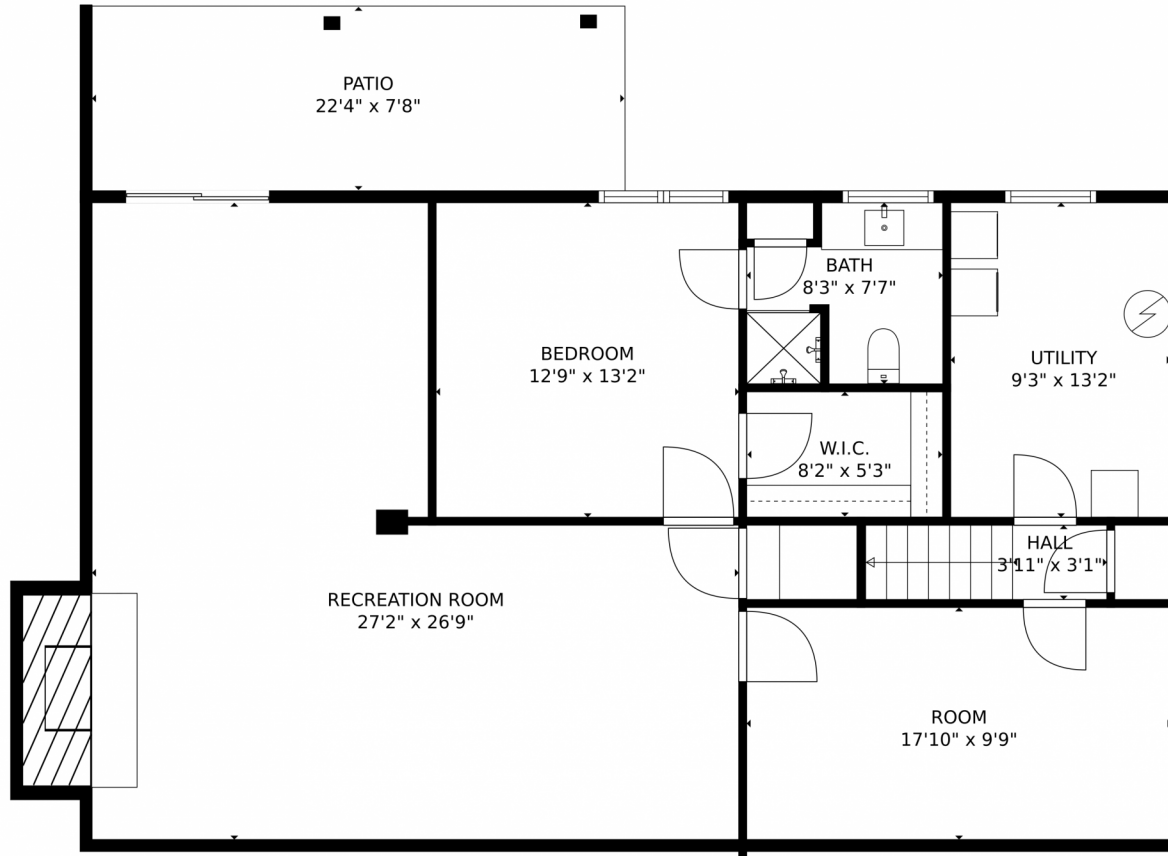
Disclaimer: Sizes and Dimensions are Approximate, Actual May Vary.



Andrea Price
303-956-9691
andrea@pricecohomes.com



10325 East Cherrywood Drive, Parker, CO 80138 – Lower Level



TOTAL: 2341 sq. ft
Below Ground: 1094 sq. ft, FLOOR 2: 1247 sq. ft
EXCLUDED AREAS: UTILITY: 122 sq. ft, PATIO: 174 sq. ft, FIREPLACE: 40 sq. ft,
GARAGE: 538 sq. ft, PORCH: 59 sq. ft, BALCONY: 165 sq. ft
MEASUREMENTS CALCULATED BY V1Photos.com ARE DEEMED HIGHLY RELIABLE BUT NOT GUARANTEED.

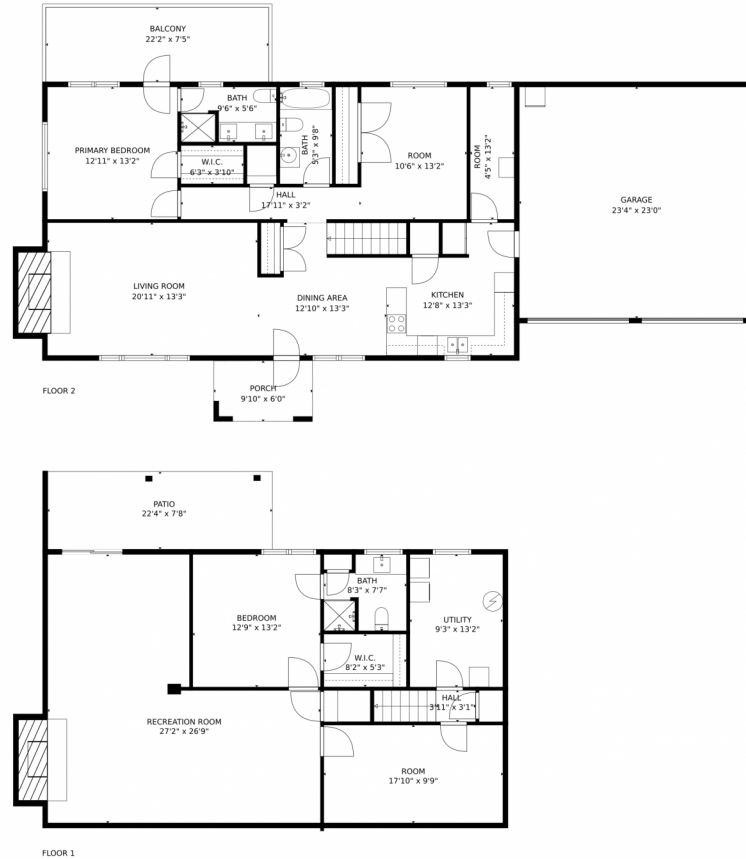
Disclaimer: Sizes and Dimensions are Approximate, Actual May Vary.



Andrea Price
303-956-9691
andrea@pricecohomes.com



10325 East Cherrywood Drive, Parker, CO 80138 – All Levels



TOTAL: 2341 sq. ft
Below Ground: 1094 sq. ft, FLOOR 2: 1247 sq. ft
EXCLUDED AREAS: UTILITY: 122 sq. ft, PATIO: 174 sq. ft, FIREPLACE: 40 sq. ft,
GARAGE: 538 sq. ft, PORCH: 59 sq. ft, BALCONY: 165 sq. ft
MEASUREMENTS CALCULATED BY V1Photos.com ARE DEEMED HIGHLY RELIABLE BUT NOT GUARANTEED.



Disclaimer: Sizes and Dimensions are Approximate, Actual May Vary.



Andrea Price
303-956-9691
andrea@pricecohomes.com

