



Single Family



4262 SQFT



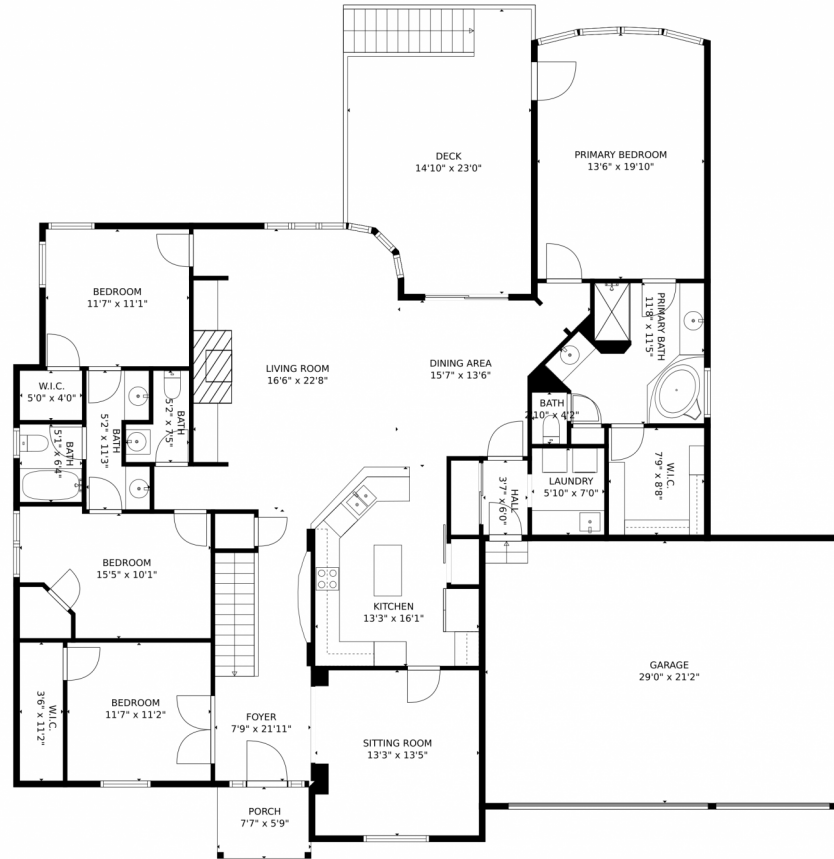
Katie Robinson
970-430-9630
katierobinson@windermere.com



Scan code
for more
property
details



8021 North Loudon Crossing Court, Windsor, CO 80528 – Main Level



TOTAL: 3840 sq. ft

Below Ground: 1558 sq. ft, FLOOR 2: 2282 sq. ft

EXCLUDED AREAS: ELECTRICAL ROOM: 425 sq. ft, STORAGE: 125 sq. ft, GARAGE: 615 sq. ft,
PORCH: 43 sq. ft, DECK: 332 sq. ft

MEASUREMENTS CALCULATED BY V1Photos.com ARE DEEMED HIGHLY RELIABLE BUT NOT GUARANTEED.



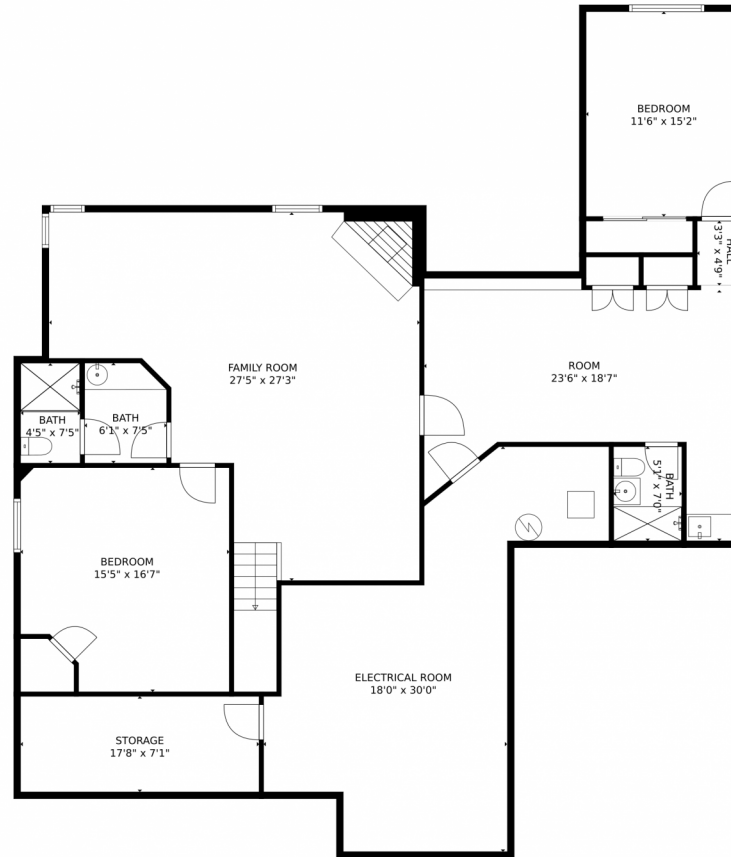
Disclaimer: Sizes and Dimensions are Approximate, Actual May Vary.



Katie Robinson
970-430-9630
katierobinson@windermere.com



8021 North Loudon Crossing Court, Windsor, CO 80528 – Lower Level



TOTAL: 3840 sq. ft
Below Ground: 1558 sq. ft, FLOOR 2: 2282 sq. ft
EXCLUDED AREAS: ELECTRICAL ROOM: 425 sq. ft, STORAGE: 125 sq. ft, GARAGE: 615 sq. ft,
PORCH: 43 sq. ft, DECK: 332 sq. ft

MEASUREMENTS CALCULATED BY V1Photos.com ARE DEEMED HIGHLY RELIABLE BUT NOT GUARANTEED.



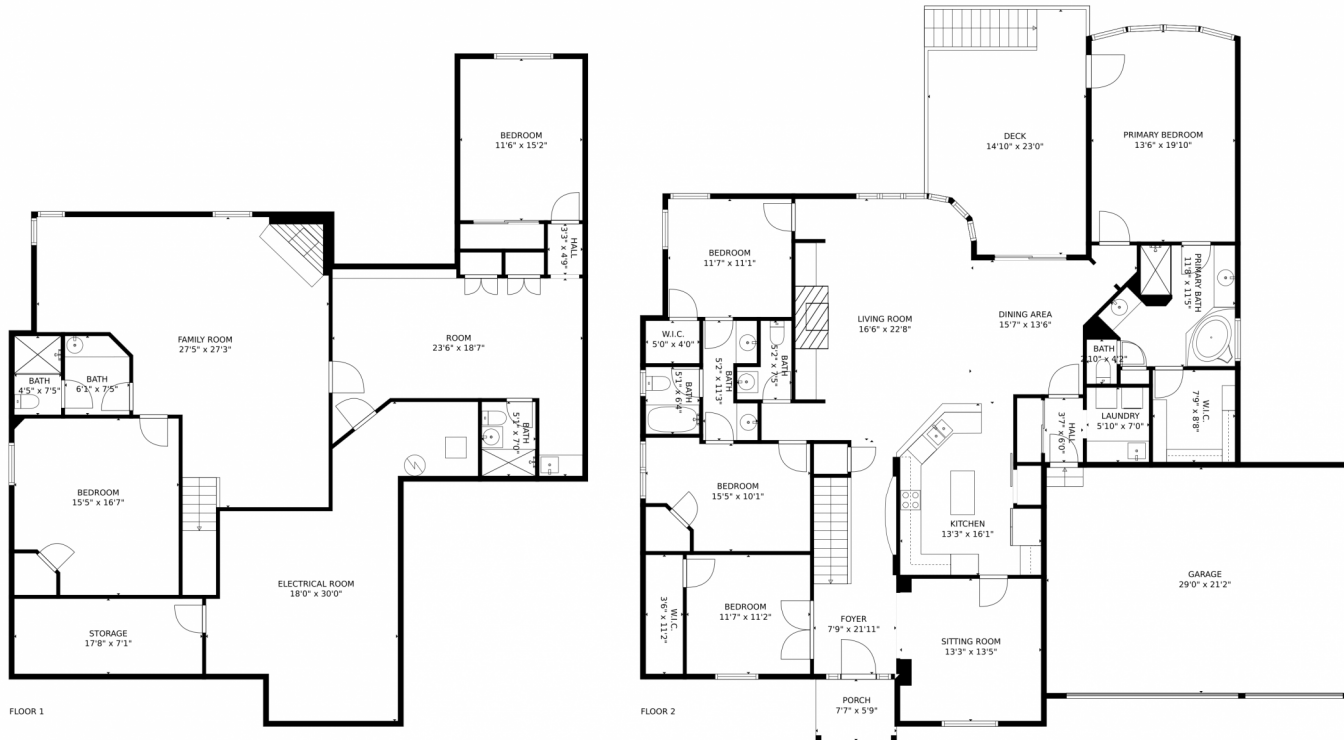
Disclaimer: Sizes and Dimensions are Approximate, Actual May Vary.



Katie Robinson
970-430-9630
katierobinson@windermere.com



8021 North Loudon Crossing Court, Windsor, CO 80528 – All Levels



TOTAL: 3840 sq. ft
 Below Ground: 1558 sq. ft, FLOOR 2: 2282 sq. ft
 EXCLUDED AREAS: ELECTRICAL ROOM: 425 sq. ft, STORAGE: 125 sq. ft, GARAGE: 615 sq. ft,
 PORCH: 43 sq. ft, DECK: 332 sq. ft

MEASUREMENTS CALCULATED BY V1Photos.COM ARE DEEMED HIGHLY RELIABLE BUT NOT GUARANTEED.



Disclaimer: Sizes and Dimensions are Approximate, Actual May Vary.



Katie Robinson
 970-430-9630
 katiarobinson@windermere.com



Scan code
 for more
 property
 details