




 Single Family

 6275 SQFT

 5 Beds

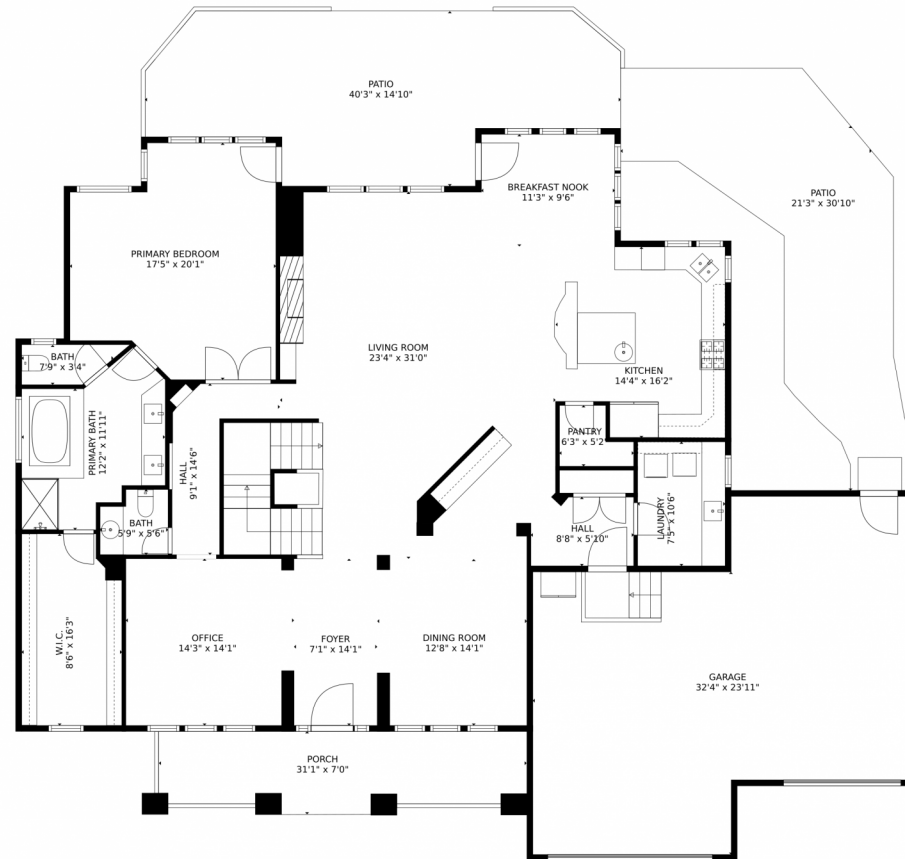
 3/2 Baths



Paul D. Andrews
720-270-1306
andrews.realtor@gmail.com
<https://www.greaterdenverhomesite.com/paul-andrews/>



4460 Augusta Drive, Broomfield, CO 80023 – Main Level



TOTAL: 5668 sq. ft
Below Ground: 2042 sq. ft, FLOOR 2: 2466 sq. ft, FLOOR 3: 1160 sq. ft
EXCLUDED AREAS: ELECTRICAL ROOM: 243 sq. ft, STORAGE: 59 sq. ft, WINE CELLAR: 56 sq. ft,
GARAGE: 774 sq. ft, PORCH: 191 sq. ft, PATIO: 881 sq. ft,
OPEN TO BELOW: 455 sq. ft.

MEASUREMENTS CALCULATED BY V1Photos.com ARE DEEMED HIGHLY RELIABLE BUT NOT GUARANTEED.



Disclaimer: Sizes and Dimensions are Approximate, Actual May Vary.



Paul D. Andrews
720-270-1306
andrews.realtor@gmail.com
<https://www.greaterdenverhomesite.com/paul-andrews/>



Scan code
for more
property
details



4460 Augusta Drive, Broomfield, CO 80023 – Second Level



TOTAL: 5668 sq. ft
Below Ground: 2042 sq. ft, FLOOR 2: 2466 sq. ft, FLOOR 3: 1160 sq. ft
EXCLUDED AREAS: ELECTRICAL ROOM: 243 sq. ft, STORAGE: 59 sq. ft, WINE CELLAR: 56 sq. ft,
GARAGE: 774 sq. ft, PORCH: 191 sq. ft, PATIO: 881 sq. ft,
OPEN TO BELOW: 455 sq. ft

MEASUREMENTS CALCULATED BY V1Photos.com ARE DEEMED HIGHLY RELIABLE BUT NOT GUARANTEED.



Disclaimer: Sizes and Dimensions are Approximate, Actual May Vary.



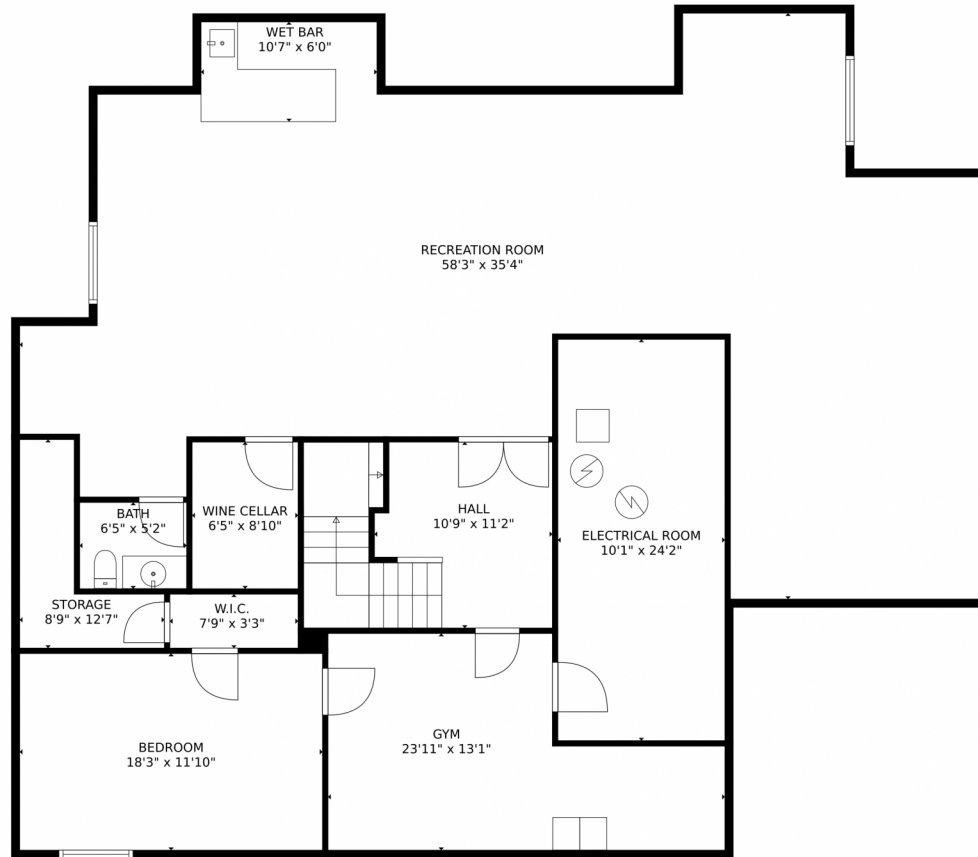
Paul D. Andrews
720-270-1306
andrews.realtor@gmail.com
<https://www.greaterdenverhomesite.com/paul-andrews/>



Scan code
for more
property
details



4460 Augusta Drive, Broomfield, CO 80023 – Basement



TOTAL: 5668 sq. ft
Below Ground: 2042 sq. ft, FLOOR 2: 2466 sq. ft, FLOOR 3: 1160 sq. ft
EXCLUDED AREAS: ELECTRICAL ROOM: 243 sq. ft, STORAGE: 59 sq. ft, WINE CELLAR: 56 sq. ft,
GARAGE: 774 sq. ft, PORCH: 191 sq. ft, PATIO: 881 sq. ft,
OPEN TO BELOW: 455 sq. ft

MEASUREMENTS CALCULATED BY V1Photos.com ARE DEEMED HIGHLY RELIABLE BUT NOT GUARANTEED.



Disclaimer: Sizes and Dimensions are Approximate, Actual May Vary.



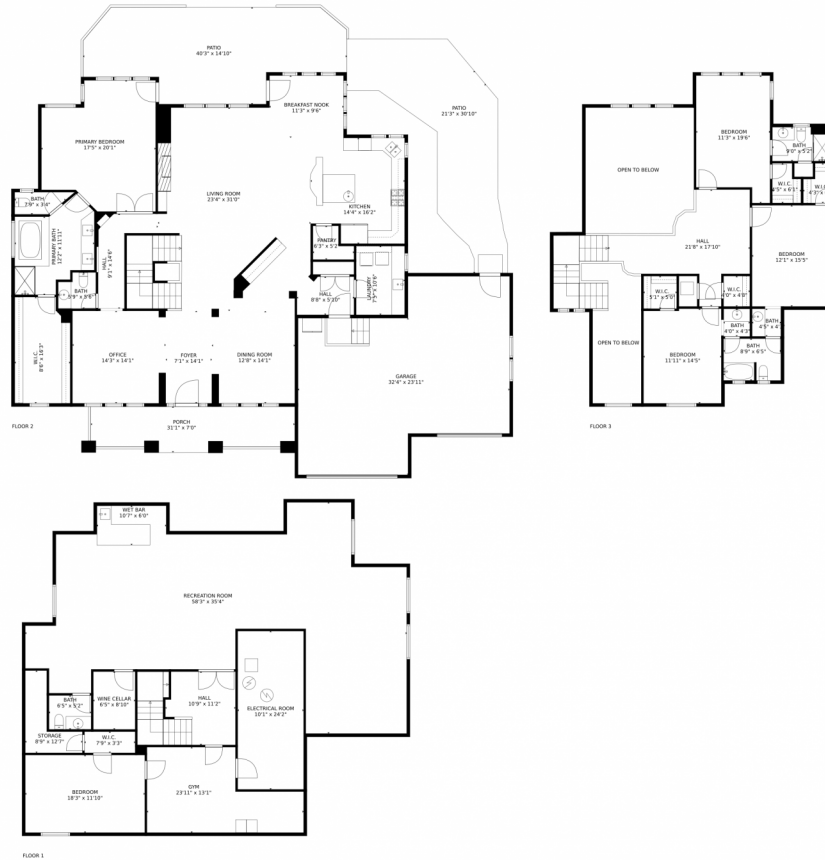
Paul D. Andrews
720-270-1306
andrews.realtor@gmail.com
<https://www.greaterdenverhomesite.com/paul-andrews/>



Scan code
for more
property
details



4460 Augusta Drive, Broomfield, CO 80023 – All Levels



TOTAL: 5668 sq. ft
Below Ground: 2042 sq. ft, FLOOR 2: 2466 sq. ft, FLOOR 3: 1160 sq. ft
EXCLUDED AREAS: ELECTRICAL ROOM: 243 sq. ft, STORAGE: 59 sq. ft, WINE CELLAR: 56 sq. ft,
GARAGE: 774 sq. ft, PORCH: 191 sq. ft, PATIO: 881 sq. ft,
OPEN TO BELOW: 455 sq. ft

MEASUREMENTS CALCULATED BY V1Photos.com ARE DEEMED HIGHLY RELIABLE BUT NOT GUARANTEED.



Disclaimer: Sizes and Dimensions are Approximate, Actual May Vary.



Paul D. Andrews
720-270-1306
andrews.realtor@gmail.com
<https://www.greaterdenverhomesite.com/paul-andrews/>



Scan code
for more
property
details

