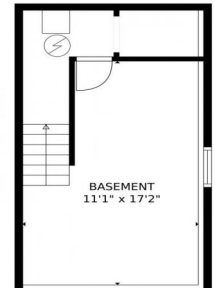





1340 Magnolia Street, Denver, CO 80220 - Lower Level




 Single Family

 1049 SQFT

 2 Beds

 1 Baths

 1 Car

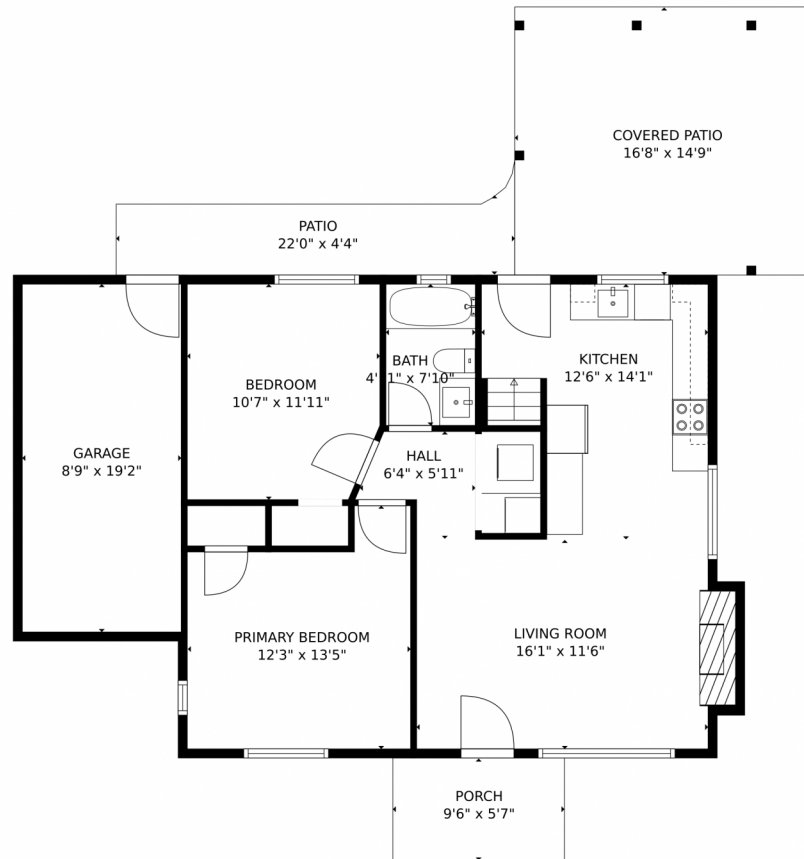
 0.14 Acre



Kifle Leulseged
720-891-6979
kleulseged@gmail.com



1340 Magnolia Street, Denver, CO 80220 – Main Level



TOTAL: 990 sq. ft
Below Ground: 244 sq. ft, FLOOR 2: 746 sq. ft
EXCLUDED AREAS: GARAGE: 168 sq. ft, PORCH: 53 sq. ft, COVERED PATIO: 246 sq. ft,
PATIO: 87 sq. ft, FIREPLACE: 6 sq. ft

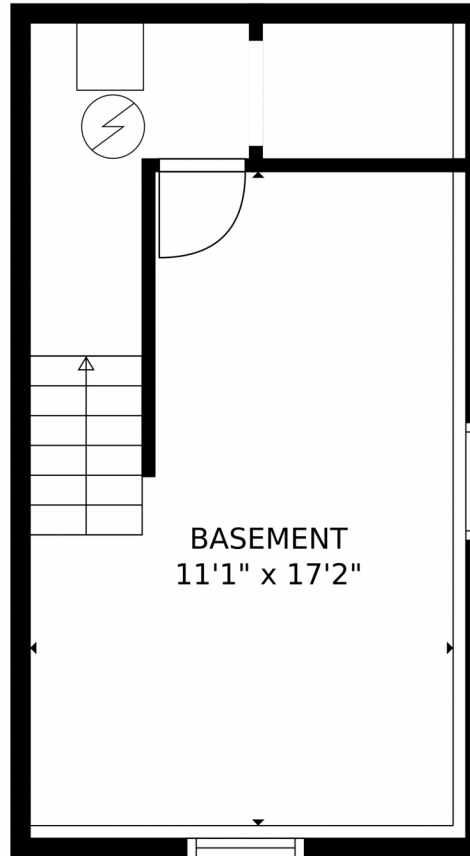
MEASUREMENTS CALCULATED BY V1Photos.com ARE DEEMED HIGHLY RELIABLE BUT NOT GUARANTEED.

Disclaimer: Sizes and Dimensions are Approximate, Actual May Vary.



Kifle Leulseged
720-891-6979
kleulseged@gmail.com





TOTAL: 990 sq. ft
Below Ground: 244 sq. ft, FLOOR 2: 746 sq. ft
EXCLUDED AREAS: GARAGE: 168 sq. ft, PORCH: 53 sq. ft, COVERED PATIO: 246 sq. ft,
PATIO: 87 sq. ft, FIREPLACE: 6 sq. ft
MEASUREMENTS CALCULATED BY V1Photos.com ARE DEEMED HIGHLY RELIABLE BUT NOT GUARANTEED.



Disclaimer: Sizes and Dimensions are Approximate, Actual May Vary.

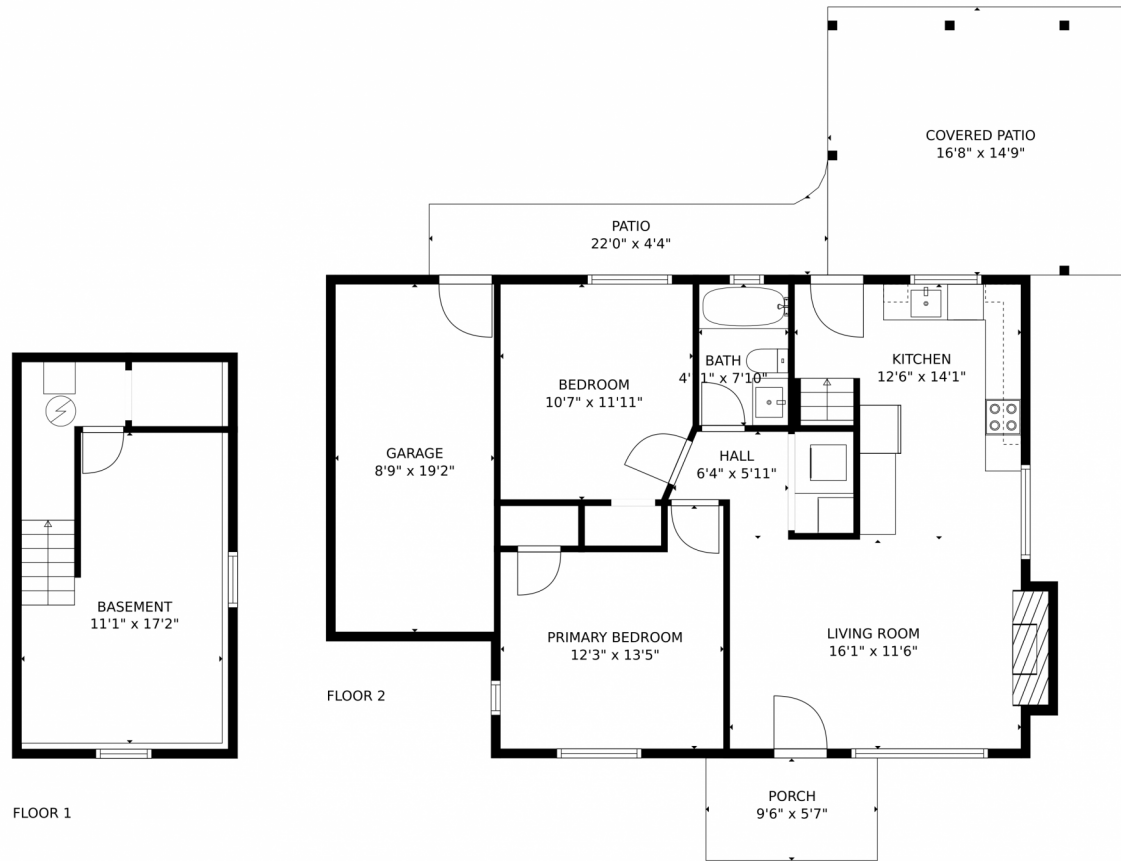


Kifle Leulseged
720-891-6979
kleulseged@gmail.com



Scan code
for more
property
details

1340 Magnolia Street, Denver, CO 80220 – All Levels



TOTAL: 990 sq. ft
Below Ground: 244 sq. ft, FLOOR 2: 746 sq. ft
EXCLUDED AREAS: GARAGE: 168 sq. ft, PORCH: 53 sq. ft, COVERED PATIO: 246 sq. ft,
PATIO: 87 sq. ft, FIREPLACE: 6 sq. ft

MEASUREMENTS CALCULATED BY V1Photos.com ARE DEEMED HIGHLY RELIABLE BUT NOT GUARANTEED.



Disclaimer: Sizes and Dimensions are Approximate, Actual May Vary.



Kifle Leulseged
720-891-6979
kleulseged@gmail.com

