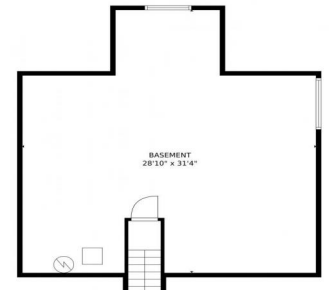




22322 East Plymouth Circle
Aurora, CO 80016



22322 East Plymouth Circle, Aurora, CO 80016 - lower level



Townhouse

1741 SQFT

2 Beds

2 Baths

2 Car

0.11 Acre



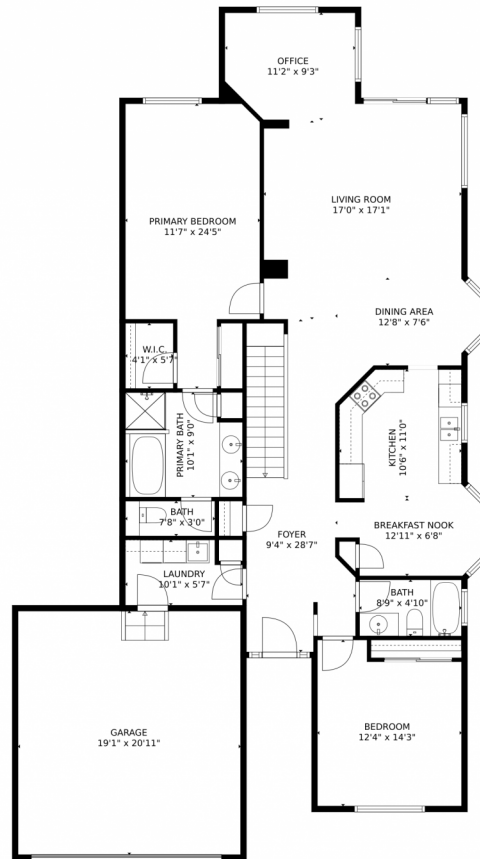
Jeni VanOrnum
303-790-7200
jenivorealtor@gmail.com
<https://www.jenivosellscolorado.com>



Scan code
for more
property
details



22322 East Plymouth Circle, Aurora, CO 80016 — main level



TOTAL: 1620 sq. ft

Below Ground: 33 sq. ft, FLOOR 2: 1587 sq. ft

EXCLUDED AREAS: BASEMENT: 734 sq. ft, GARAGE: 399 sq. ft

MEASUREMENTS CALCULATED BY V1Photos.com ARE DEEMED HIGHLY RELIABLE BUT NOT GUARANTEED.



Disclaimer: Sizes and Dimensions are Approximate, Actual May Vary.



Jeni VanOrnum

303-790-7200

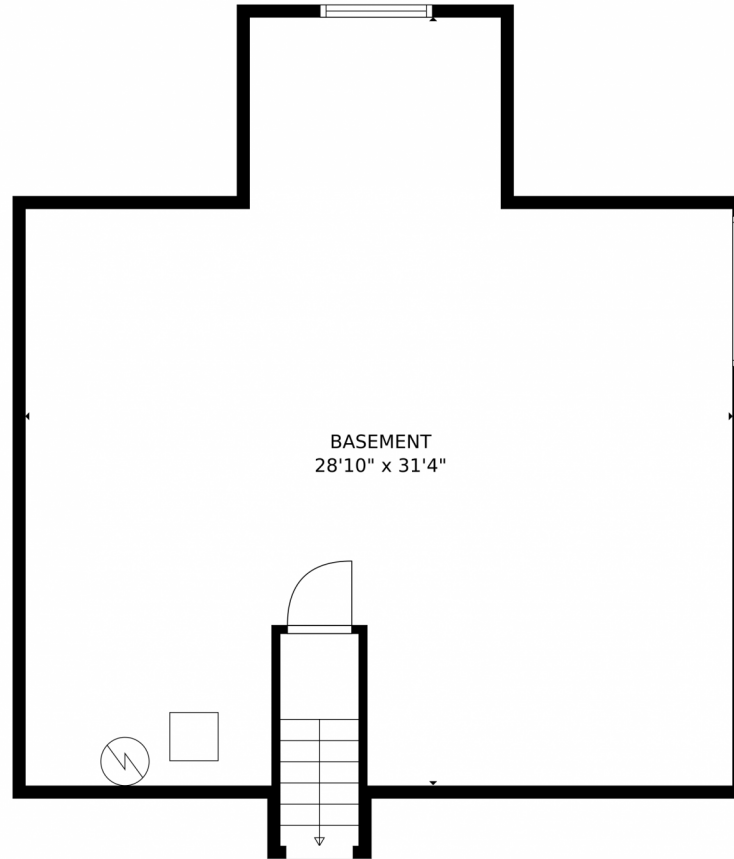
jenivorealtor@gmail.com

<https://www.jenivosellscolorado.com>



Scan code
for more
property
details





TOTAL: 1620 sq. ft
Below Ground: 33 sq. ft, FLOOR 2: 1587 sq. ft
EXCLUDED AREAS: BASEMENT: 734 sq. ft, GARAGE: 399 sq. ft
MEASUREMENTS CALCULATED BY V1Photos.com ARE DEEMED HIGHLY RELIABLE BUT NOT GUARANTEED.



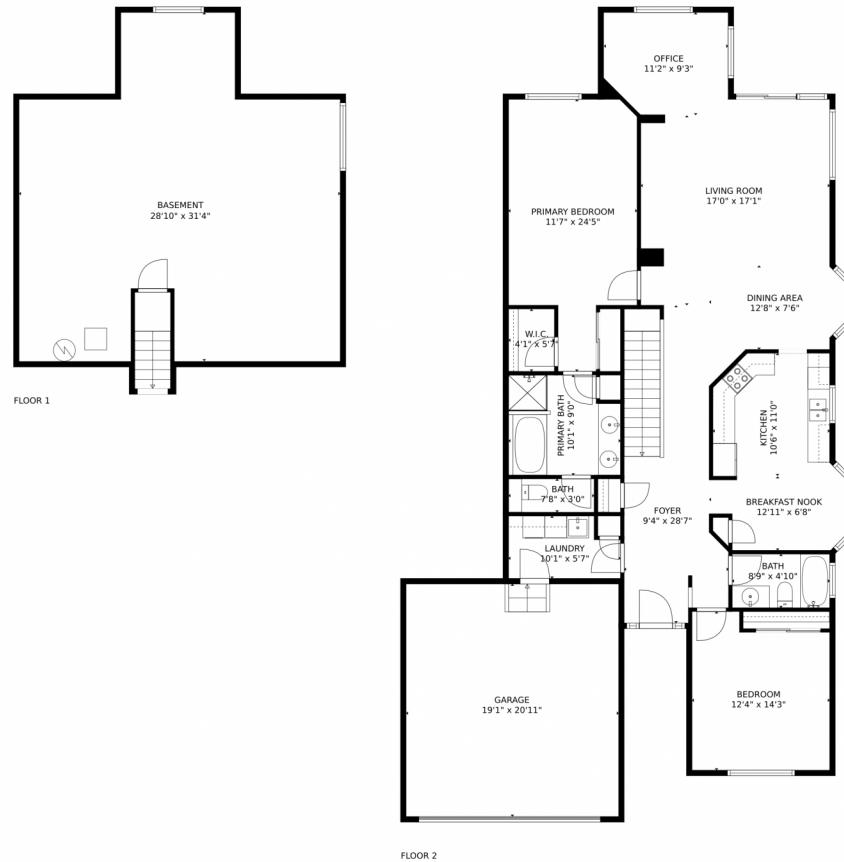
Disclaimer: Sizes and Dimensions are Approximate, Actual May Vary.



Jeni VanOrnum
303-790-7200
jenivorealtor@gmail.com
<https://www.jenivosellscolorado.com>



22322 East Plymouth Circle, Aurora, CO 80016 — all levels



TOTAL: 1620 sq. ft
Below Ground: 33 sq. ft, FLOOR 2: 1587 sq. ft
EXCLUDED AREAS: BASEMENT: 734 sq. ft, GARAGE: 399 sq. ft
MEASUREMENTS CALCULATED BY V1Photos.com ARE DEEMED HIGHLY RELIABLE BUT NOT GUARANTEED.



Disclaimer: Sizes and Dimensions are Approximate, Actual May Vary.



Jeni VanOrnum
303-790-7200
jenivorealtor@gmail.com
<https://www.jenivosellscolorado.com>

