



Single Family



2824 SQFT



3 Beds



2/1 Baths



2 Car



0.38 Acre

PROPERTY DETAILS

Experience mountain living at its finest in this updated custom home with stunning 180-degree mountain views. This move-in ready home offers open concept living, hickory floors, vaulted ceilings, and plenty of natural light. The living room and great room feature French doors and panoramic views. The spacious kitchen boasts granite countertops, hickory cabinets, and stainless appliances. The upper level features a primary suite with breathtaking views and a luxurious en-suite bathroom. Two guest bedrooms share a full bath. The walkout basement offers additional living space and convenient access to the garage. Located in Kings Valley Estates, enjoy the mountain lifestyle with community water and sewer. Just minutes from Conifer for shopping and dining, and Staunton State Park for outdoor activities. Live the mountain lifestyle with all the conveniences of town.



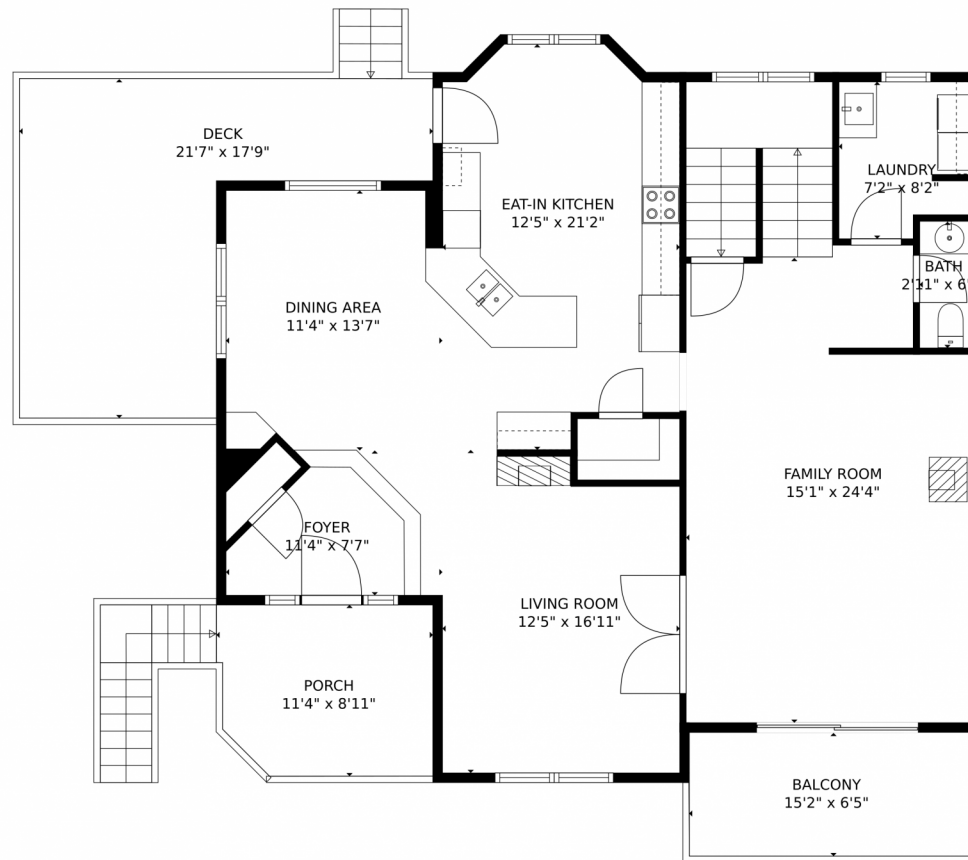
Jennifer Sells
303-877-2908
jenn@teamsells.com



Scan code
for more
property
details



11770 Leavenworth Drive, Conifer, CO 80433 — Main Level



TOTAL: 2758 sq. ft

Below Ground: 462 sq. ft, FLOOR 2: 1219 sq. ft, FLOOR 3: 1077 sq. ft
EXCLUDED AREAS: ELECTRICAL ROOM: 92 sq. ft, GARAGE: 594 sq. ft, PORCH: 96 sq. ft,
BALCONY: 98 sq. ft, DECK: 243 sq. ft, OPEN TO BELOW: 143 sq. ft,
UNDEFINED: 10 sq. ft

MEASUREMENTS CALCULATED BY V1Photos.com ARE DEEMED HIGHLY RELIABLE BUT NOT GUARANTEED.



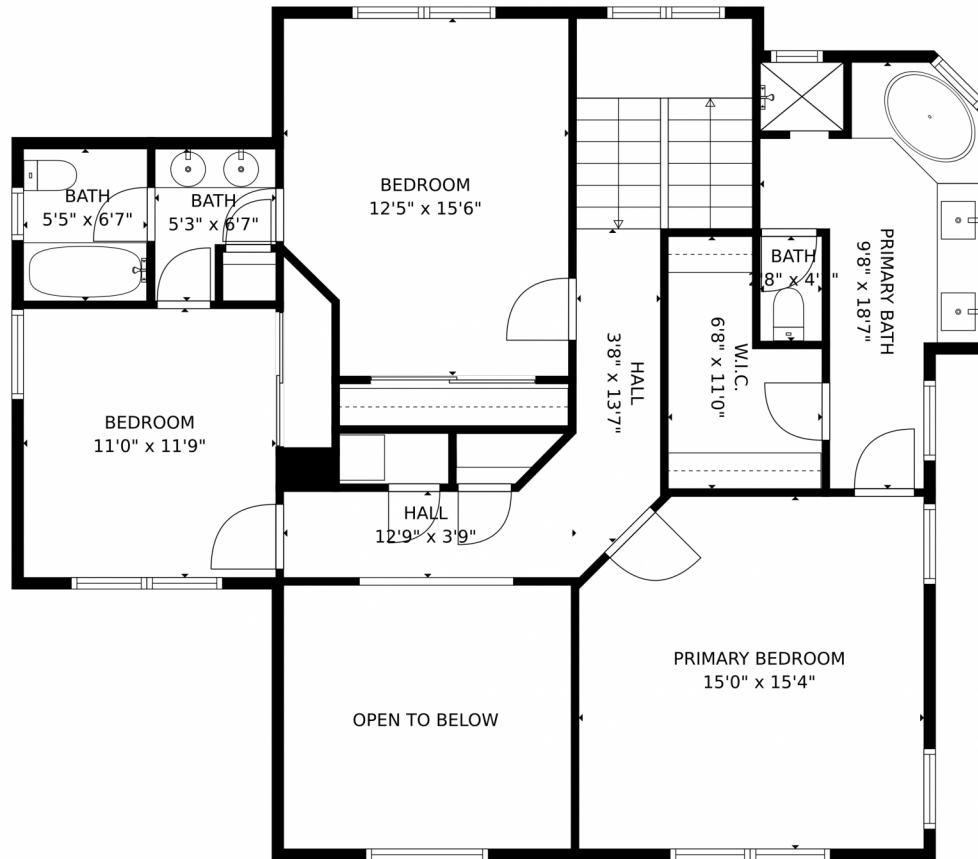
Disclaimer: Sizes and Dimensions are Approximate, Actual May Vary.



Jennifer Sells
303-877-2908
jenn@teamsells.com



11770 Leavenworth Drive, Conifer, CO 80433 — Upper Level



TOTAL: 2758 sq. ft
Below Ground: 462 sq. ft, FLOOR 2: 1219 sq. ft, FLOOR 3: 1077 sq. ft
EXCLUDED AREAS: ELECTRICAL ROOM: 92 sq. ft, GARAGE: 594 sq. ft, PORCH: 96 sq. ft,
BALCONY: 98 sq. ft, DECK: 243 sq. ft, OPEN TO BELOW: 143 sq. ft,
UNDEFINED: 10 sq. ft

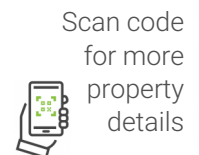
MEASUREMENTS CALCULATED BY V1Photos.com ARE DEEMED HIGHLY RELIABLE BUT NOT GUARANTEED.



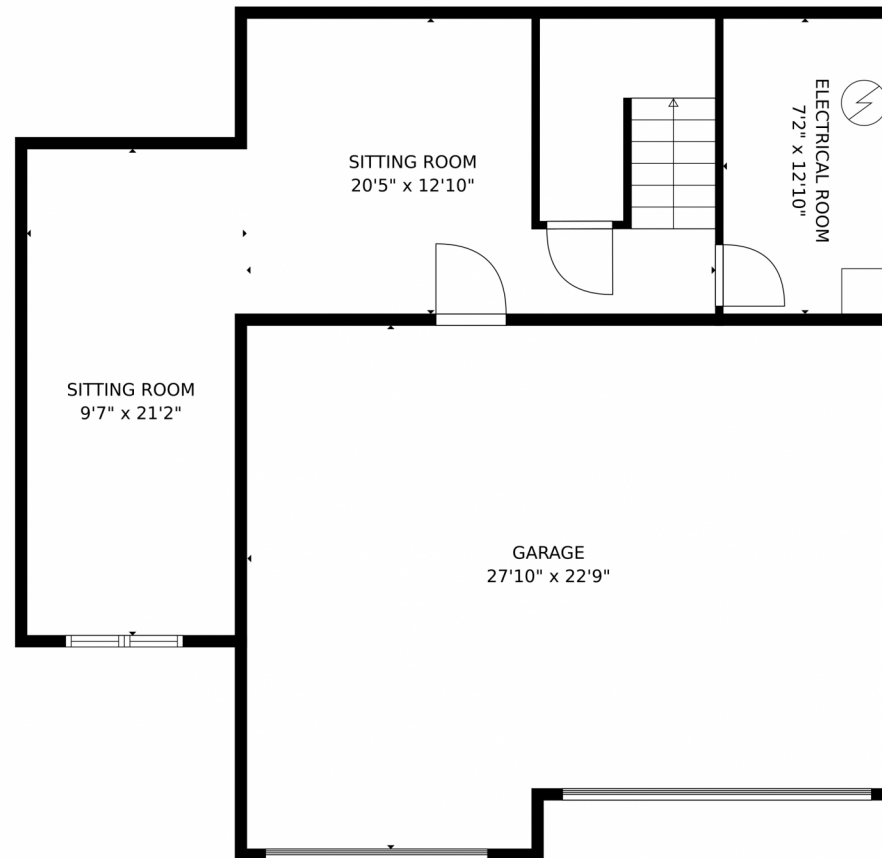
Disclaimer: Sizes and Dimensions are Approximate, Actual May Vary.



Jennifer Sells
303-877-2908
jenn@teamsells.com



11770 Leavenworth Drive, Conifer, CO 80433 — Lower Level



TOTAL: 2758 sq. ft
Below Ground: 462 sq. ft, FLOOR 2: 1219 sq. ft, FLOOR 3: 1077 sq. ft
EXCLUDED AREAS: ELECTRICAL ROOM: 92 sq. ft, GARAGE: 594 sq. ft, PORCH: 96 sq. ft,
BALCONY: 98 sq. ft, DECK: 243 sq. ft, OPEN TO BELOW: 143 sq. ft,
UNDEFINED: 10 sq. ft

MEASUREMENTS CALCULATED BY V1Photos.com ARE DEEMED HIGHLY RELIABLE BUT NOT GUARANTEED.



Disclaimer: Sizes and Dimensions are Approximate, Actual May Vary.



Jennifer Sells
303-877-2908
jenn@teamsells.com



Scan code
for more
property
details

