



Single Family



2256 SQFT



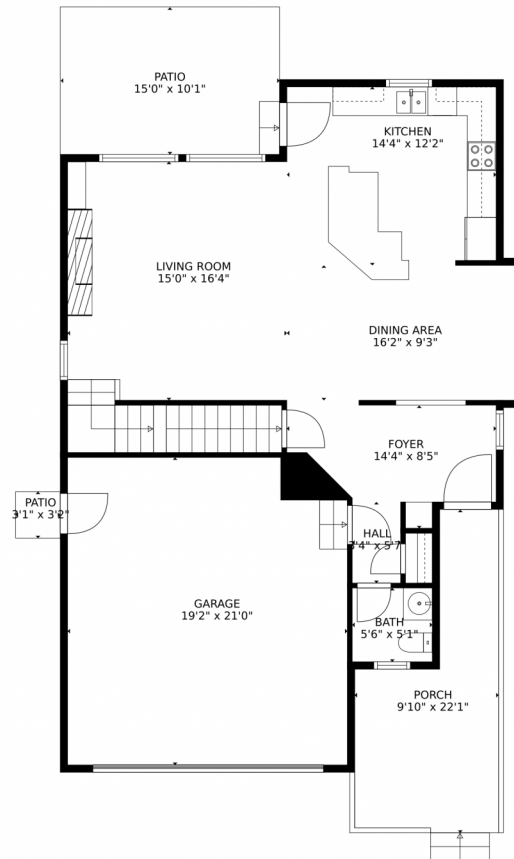
Reba Tipton
970-215-6768
rebatipton@windermere.com



Scan code
for more
property
details



2326 Summer park Lane, Fort Collins, CO 80524 – Main Level



TOTAL: 2134 sq. ft
Below Ground: 515 sq. ft, FLOOR 2: 770 sq. ft, FLOOR 3: 849 sq. ft
EXCLUDED AREAS: ELECTRICAL ROOM: 157 sq. ft, PORCH: 152 sq. ft, PATIO: 161 sq. ft,
GARAGE: 398 sq. ft, OPEN TO BELOW: 171 sq. ft

MEASUREMENTS CALCULATED BY V1Photos.com ARE DEEMED HIGHLY RELIABLE BUT NOT GUARANTEED.



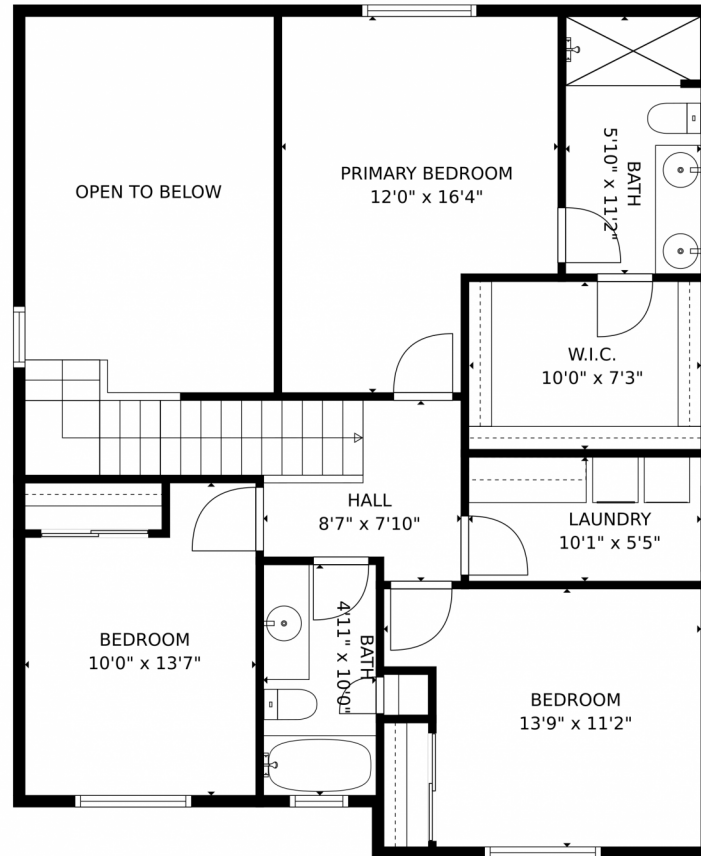
Disclaimer: Sizes and Dimensions are Approximate, Actual May Vary.



Reba Tipton
970-215-6768
rebatipton@windermere.com



2326 Summer park Lane, Fort Collins, CO 80524 – Upper Level



TOTAL: 2134 sq. ft
Below Ground: 515 sq. ft, FLOOR 2: 770 sq. ft, FLOOR 3: 849 sq. ft
EXCLUDED AREAS: ELECTRICAL ROOM: 157 sq. ft, PORCH: 152 sq. ft, PATIO: 161 sq. ft,
GARAGE: 398 sq. ft, OPEN TO BELOW: 171 sq. ft

MEASUREMENTS CALCULATED BY V1Photos.com ARE DEEMED HIGHLY RELIABLE BUT NOT GUARANTEED.



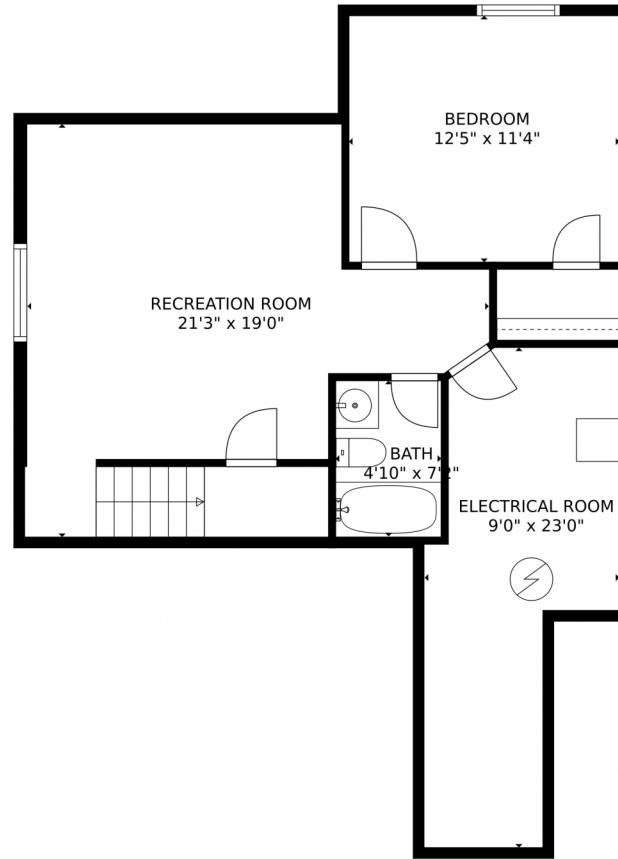
Disclaimer: Sizes and Dimensions are Approximate, Actual May Vary.



Reba Tipton
970-215-6768
rebatipton@windermere.com



2326 Summer park Lane, Fort Collins, CO 80524 – Lower Level



TOTAL: 2134 sq. ft
Below Ground: 515 sq. ft, FLOOR 2: 770 sq. ft, FLOOR 3: 849 sq. ft
EXCLUDED AREAS: ELECTRICAL ROOM: 157 sq. ft, PORCH: 152 sq. ft, PATIO: 161 sq. ft,
GARAGE: 398 sq. ft, OPEN TO BELOW: 171 sq. ft

MEASUREMENTS CALCULATED BY V1Photos.com ARE DEEMED HIGHLY RELIABLE BUT NOT GUARANTEED.



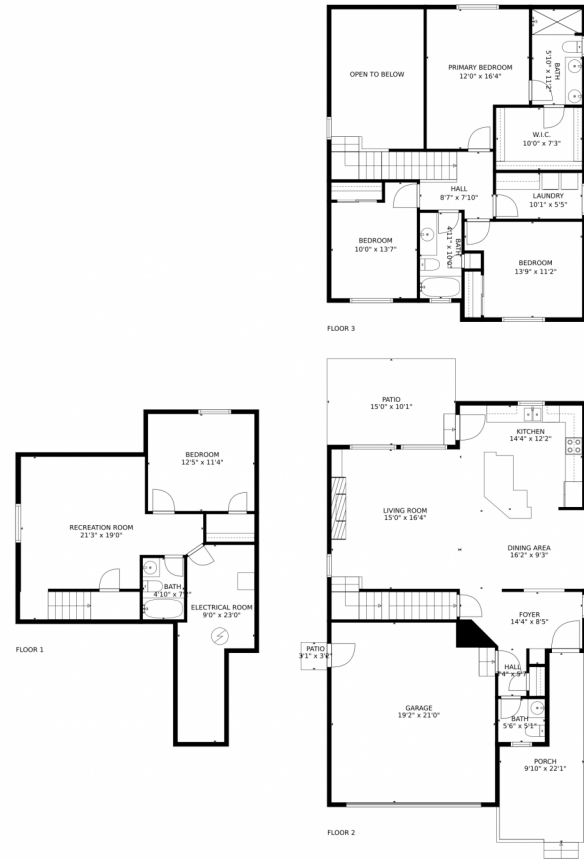
Disclaimer: Sizes and Dimensions are Approximate, Actual May Vary.



Reba Tipton
970-215-6768
rebatipton@windermere.com



2326 Summer park Lane, Fort Collins, CO 80524 – All Levels



TOTAL: 2134 sq. ft
Below Ground: 515 sq. ft, FLOOR 2: 770 sq. ft, FLOOR 3: 849 sq. ft
EXCLUDED AREAS: ELECTRICAL ROOM: 157 sq. ft, PORCH: 152 sq. ft, PATIO: 161 sq. ft,
GARAGE: 398 sq. ft, OPEN TO BELOW: 171 sq. ft

MEASUREMENTS CALCULATED BY V1Photos.com ARE DEEMED HIGHLY RELIABLE BUT NOT GUARANTEED.



Disclaimer: Sizes and Dimensions are Approximate, Actual May Vary.



Reba Tipton
970-215-6768
rebatipton@windermere.com

