



2313 Saddle Back Court
 Fort Lupton, CO 80621
 COMMUNITY: Coyote Creek

MLS # 4348089
 PRICE \$495,000



Single Family



1635 SQFT



3 Beds



2/1 Baths



2 Car

PROPERTY DETAILS

Welcome to 2313 Saddle Back Court, a like-new home with stunning views of the Coyote Creek Golf Course. This home features an open floor plan with neutral finishes. The kitchen is equipped with white shaker cabinets, granite countertops, and stainless appliances. Upstairs, you will find two spacious bedrooms and a hall bathroom with dual vanity. The primary suite offers mountain views, an ensuite bathroom, and a walk-in closet. The two-car garage provides extra storage space. The back patio offers incredible views of Longs Peak. The landscaping is professionally done with newer sod and a sprinkler system. There is also a shed for additional storage. This home is less than five years old and all major systems are in great condition. It is conveniently located near Downtown Fort Lupton, retail conveniences, and Highway 85 access. Don't miss out on this charming home!



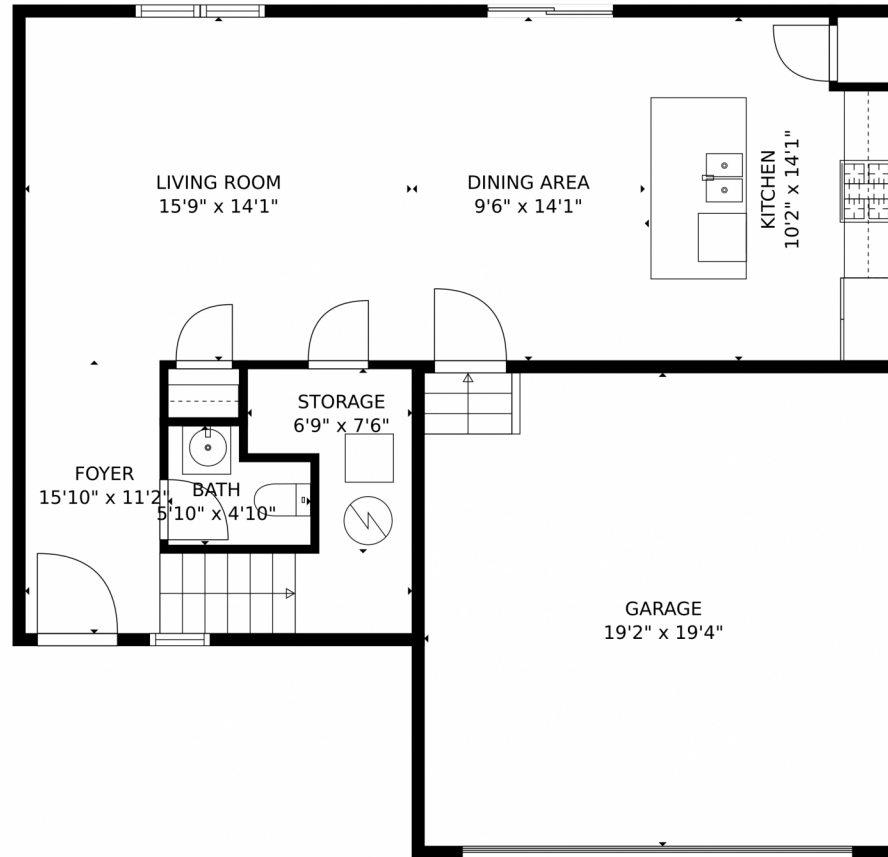
Erin Carlson
 303-808-0434
 erincarlson@yourcastle.com
<https://www.erincarlsonrealty.com/>



Scan code
 for more
 property
 details



2313 Saddle Back Court, Fort Lupton, CO 80621 — main level



TOTAL: 1530 sq. ft
FLOOR 1: 636 sq. ft, FLOOR 2: 894 sq. ft
EXCLUDED AREAS: GARAGE: 371 sq. ft, STORAGE: 39 sq. ft
MEASUREMENTS CALCULATED BY V1Photos.com ARE DEEMED HIGHLY RELIABLE BUT NOT GUARANTEED.

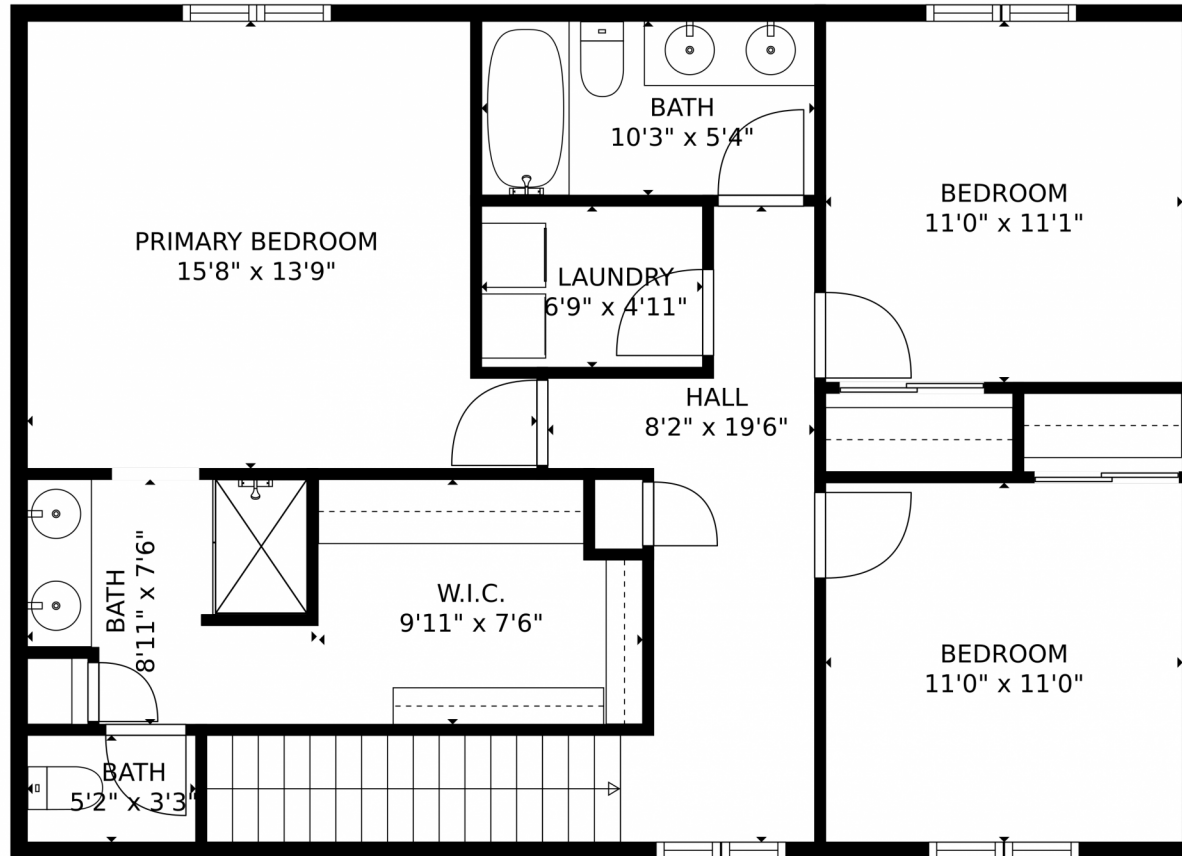
Disclaimer: Sizes and Dimensions are Approximate, Actual May Vary.



Erin Carlson
303-808-0434
erincarlson@yourcastle.com
<https://www.erincarlsonrealty.com/>



2313 Saddle Back Court, Fort Lupton, CO 80621 — upper level



TOTAL: 1530 sq. ft
FLOOR 1: 636 sq. ft, FLOOR 2: 894 sq. ft
EXCLUDED AREAS: GARAGE: 371 sq. ft, STORAGE: 39 sq. ft
MEASUREMENTS CALCULATED BY V1Photos.com ARE DEEMED HIGHLY RELIABLE BUT NOT GUARANTEED.



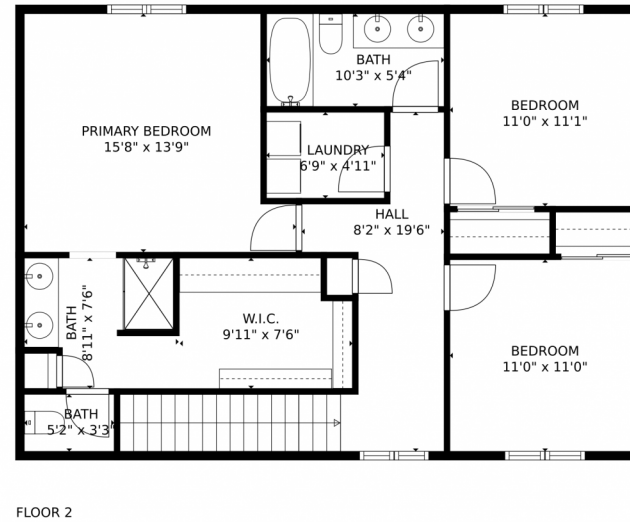
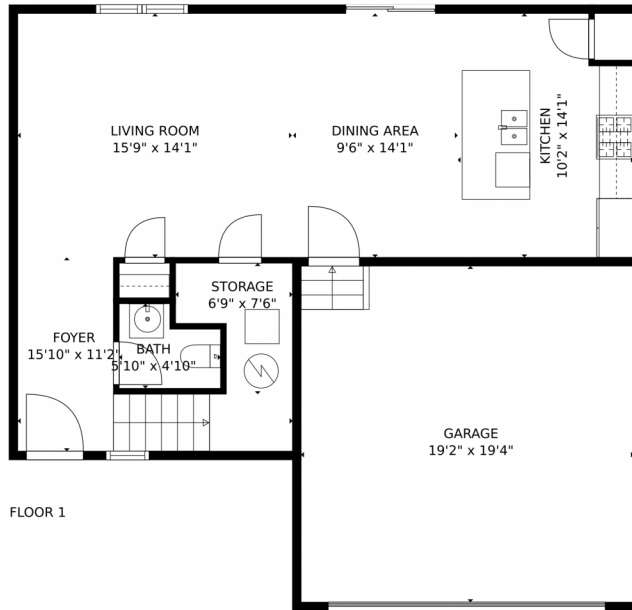
Disclaimer: Sizes and Dimensions are Approximate, Actual May Vary.



Erin Carlson
303-808-0434
erincarlson@yourcastle.com
<https://www.erincarlsonrealty.com/>



2313 Saddle Back Court, Fort Lupton, CO 80621 – all levels



TOTAL: 1530 sq. ft
FLOOR 1: 636 sq. ft, FLOOR 2: 894 sq. ft
EXCLUDED AREAS: GARAGE: 371 sq. ft, STORAGE: 39 sq. ft
MEASUREMENTS CALCULATED BY V1Photos.com ARE DEEMED HIGHLY RELIABLE BUT NOT GUARANTEED.



Disclaimer: Sizes and Dimensions are Approximate, Actual May Vary.



Erin Carlson
303-808-0434
erincarlson@yourcastle.com
<https://www.erincarlsonrealty.com/>



Scan code
for more
property
details