



1609 Southwest Harbour Isles Circle
 Port St. Lucie, FL 34986
 COMMUNITY: Harbour Isle @ Lake Charles



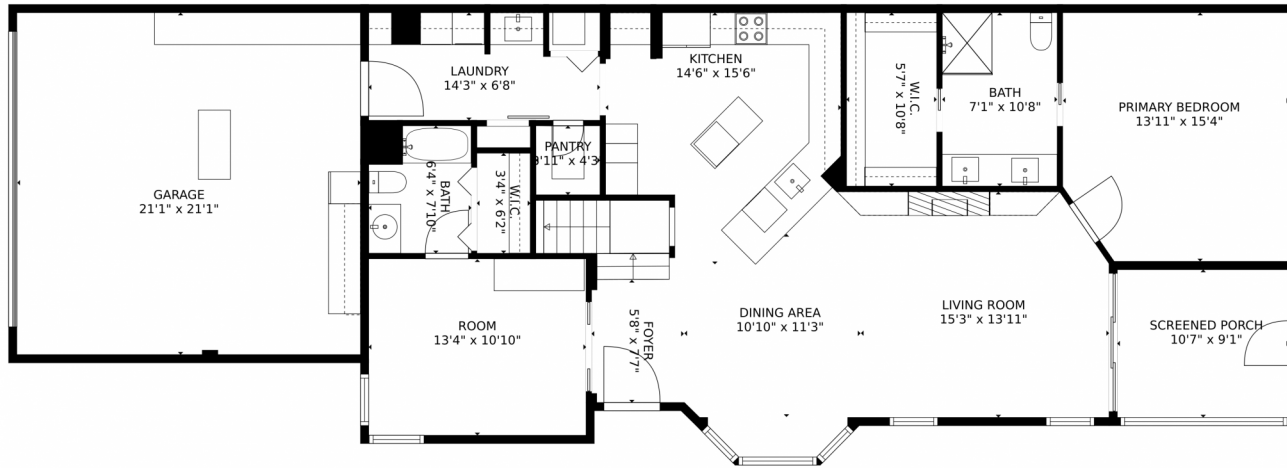
Single Family 2100 SQFT 3 Beds 3/1 Baths 2 Car



Kelley Bragg
 772-370-9705
 kbragg927@gmail.com



1609 Southwest Harbour Isles Circle, Port St. Lucie, FL 34986 —
1st_floor_1613_southwest_harbor_isles_circle_port_



TOTAL: 2006 sq. ft
FLOOR 1: 1313 sq. ft, FLOOR 2: 693 sq. ft
EXCLUDED AREAS: SCREENED PORCH: 96 sq. ft, GARAGE: 445 sq. ft, EMBEDDED WINDOW: 19 sq. ft,
OPEN TO BELOW: 494 sq. ft

MEASUREMENTS CALCULATED BY V1PHOTOS.COM ARE DEEMED HIGHLY RELIABLE BUT NOT GUARANTEED.



Disclaimer: Sizes and Dimensions are Approximate, Actual May Vary.

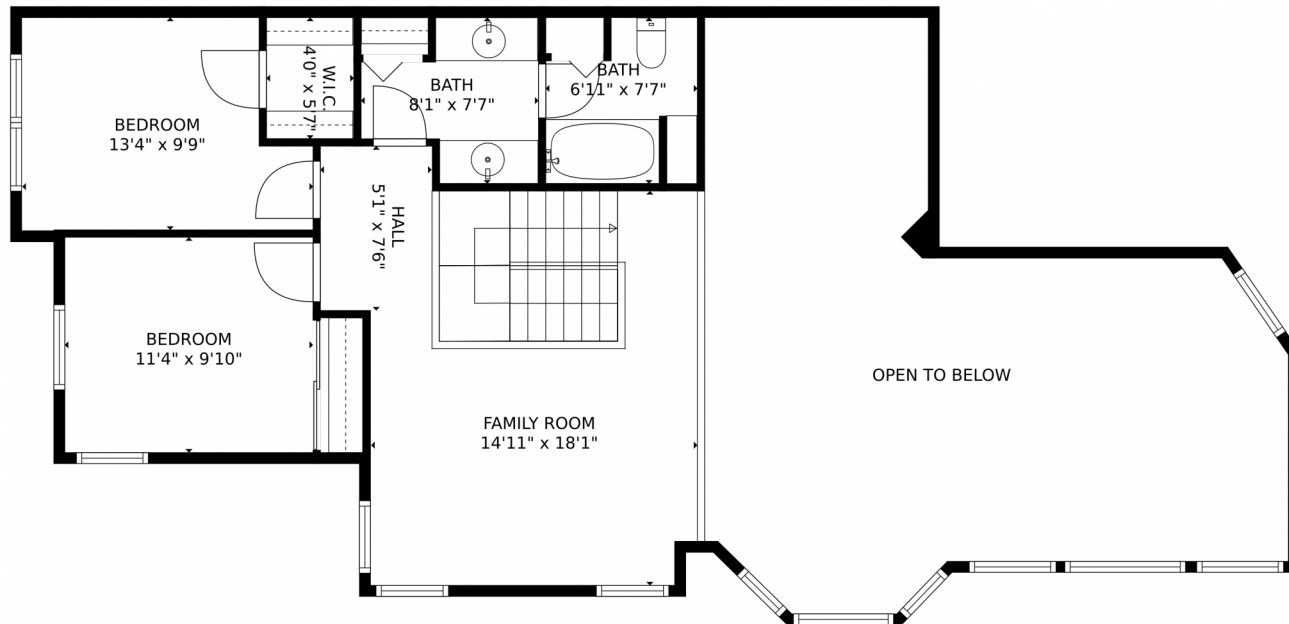


Kelley Bragg
772-370-9705
kbragg927@gmail.com



Scan code
for more
property
details

1609 Southwest Harbour Isles Circle, Port St. Lucie, FL 34986 —
2nd_floor_1613_southwest_harbor_isles_circle_port_



TOTAL: 2006 sq. ft
FLOOR 1: 1313 sq. ft, FLOOR 2: 693 sq. ft
EXCLUDED AREAS: SCREENED PORCH: 96 sq. ft, GARAGE: 445 sq. ft, EMBEDDED WINDOW: 19 sq. ft,
OPEN TO BELOW: 494 sq. ft

MEASUREMENTS CALCULATED BY V1PHOTOS.COM ARE DEEMED HIGHLY RELIABLE BUT NOT GUARANTEED.



Disclaimer: Sizes and Dimensions are Approximate, Actual May Vary.



Kelley Bragg
772-370-9705
kbragg927@gmail.com

