

 Single Family
  1169 SQFT
  2 Beds
  1 Baths
  2 Car
  0.07 Acre

## PROPERTY DETAILS

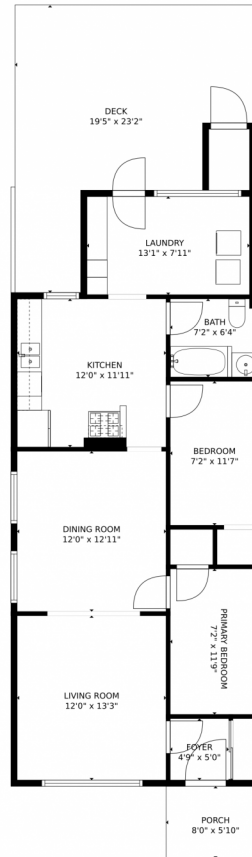
This 1890 Victorian offers city living with privacy. It has two bedrooms and a full bathroom. The living room is perfect for reading. The dining room is ideal for intimate dinners. The backyard is a private oasis, perfect for entertaining. It's located near the Santa Fe Arts District, light rail, and Speer for easy access to Cherry Creek or Cap Hill. You will love this property and all it offers.



**Daniel Mackin**  
720-466-3378  
dan@mreiagents.com



# 948 Inca Street, Denver, CO 80204 – Main Level



**TOTAL: 880 sq. ft**

Below Ground: 0 sq. ft, FLOOR 2: 880 sq. ft

EXCLUDED AREAS: PATIO: 551 sq. ft, GARAGE: 367 sq. ft, PORCH: 46 sq. ft,

DECK: 310 sq. ft

MEASUREMENTS CALCULATED BY V1Photos.com ARE DEEMED HIGHLY RELIABLE BUT NOT GUARANTEED.

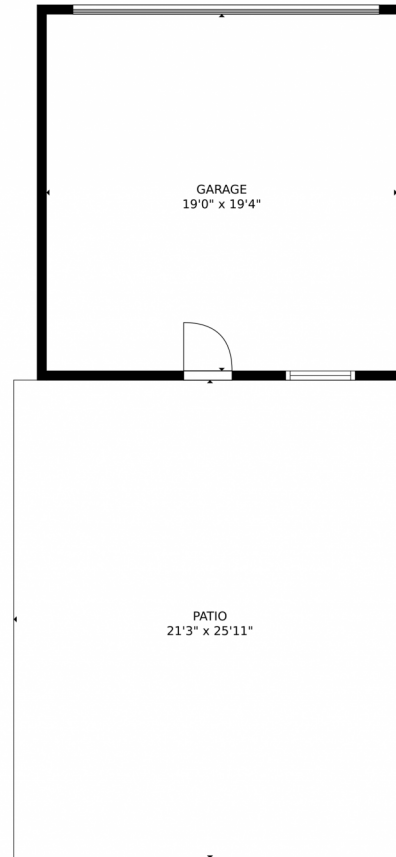


Disclaimer: Sizes and Dimensions are Approximate, Actual May Vary.



**Daniel Mackin**  
720-466-3378  
dan@mreiagents.com





**TOTAL: 880 sq. ft**  
Below Ground: 0 sq. ft, FLOOR 2: 880 sq. ft  
EXCLUDED AREAS: PATIO: 551 sq. ft, GARAGE: 367 sq. ft, PORCH: 46 sq. ft,  
DECK: 310 sq. ft

MEASUREMENTS CALCULATED BY V1Photos.com ARE DEEMED HIGHLY RELIABLE BUT NOT GUARANTEED.



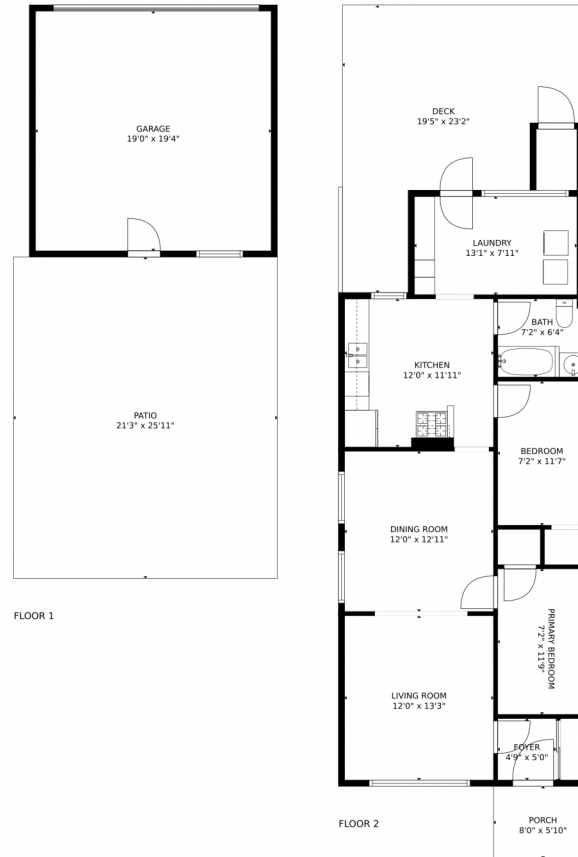
Disclaimer: Sizes and Dimensions are Approximate, Actual May Vary.



**Daniel Mackin**  
720-466-3378  
dan@mreiagents.com



# 948 Inca Street, Denver, CO 80204 – All Levels



**TOTAL: 880 sq. ft**  
Below Ground: 0 sq. ft, FLOOR 2: 880 sq. ft  
EXCLUDED AREAS: PATIO: 551 sq. ft, GARAGE: 367 sq. ft, PORCH: 46 sq. ft,  
DECK: 310 sq. ft

MEASUREMENTS CALCULATED BY V1Photos.com ARE DEEMED HIGHLY RELIABLE BUT NOT GUARANTEED.



Disclaimer: Sizes and Dimensions are Approximate, Actual May Vary.



**Daniel Mackin**  
720-466-3378  
dan@mreiagents.com

