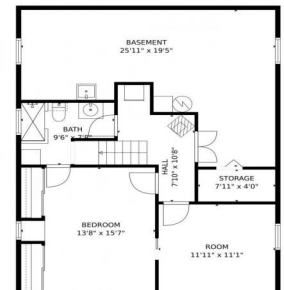




2180 West 80th Avenue
Denver, CO 80221



2180 West 80th Avenue, Denver, CO 80221 - Lower Level



Single Family

1214 SQFT

0.16 Acre

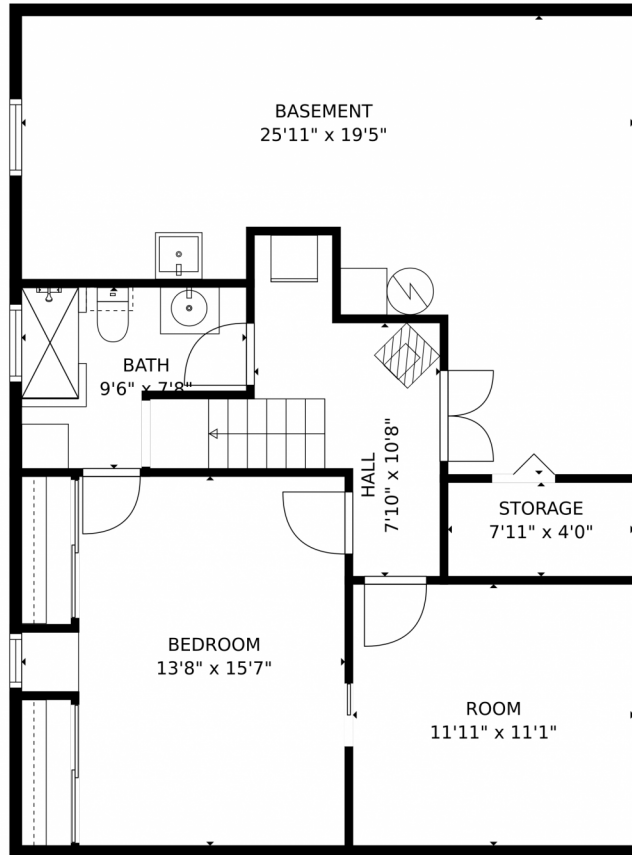


Michael Lunden
303-525-6540
mdlunden@gmail.com



Scan code
for more
property
details





TOTAL: 1600 sq. ft
Below Ground: 524 sq. ft, FLOOR 2: 1076 sq. ft
EXCLUDED AREAS: STORAGE: 164 sq. ft, BASEMENT: 352 sq. ft, PATIO: 337 sq. ft,
PORCH: 46 sq. ft, GARAGE: 611 sq. ft, CARPORT: 578 sq. ft,
EMBEDDED WINDOW: 9 sq. ft

MEASUREMENTS CALCULATED BY V1Photos.COM ARE DEEMED HIGHLY RELIABLE BUT NOT GUARANTEED.



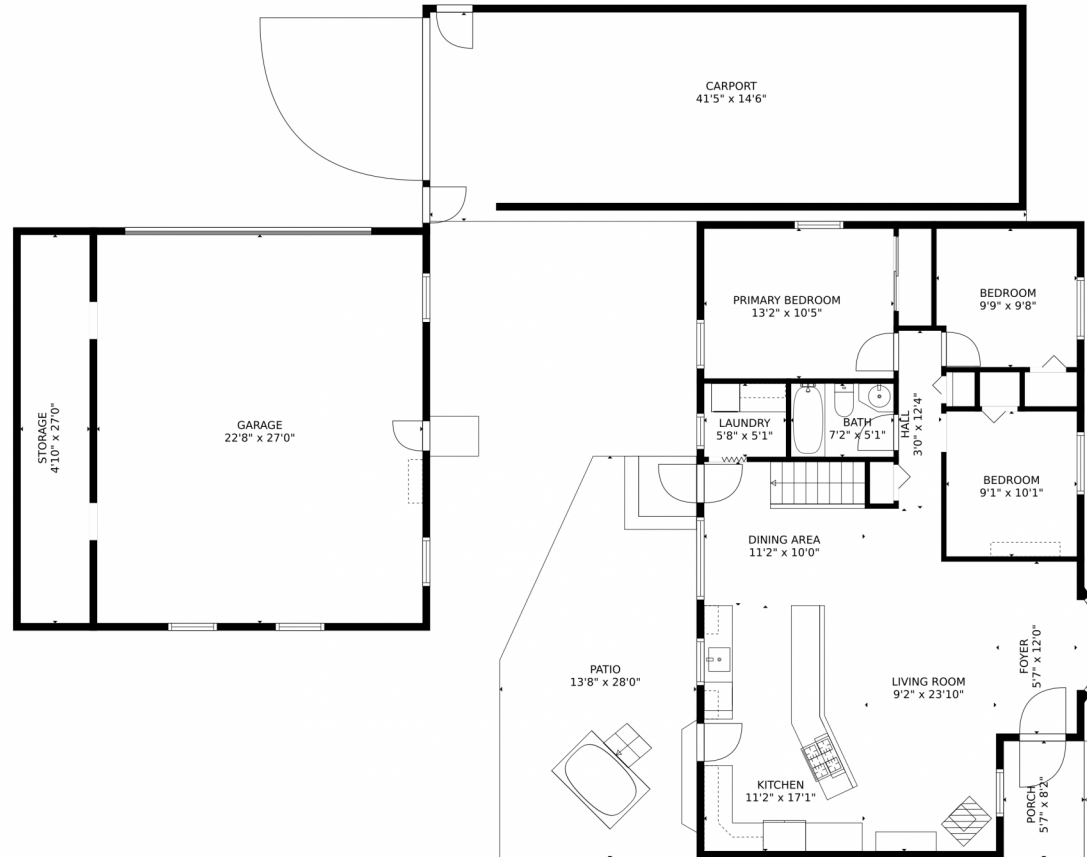
Disclaimer: Sizes and Dimensions are Approximate, Actual May Vary.



Michael Lunden
303-525-6540
mdlunden@gmail.com



2180 West 80th Avenue, Denver, CO 80221 – Main Level



TOTAL: 1600 sq. ft
Below Ground: 524 sq. ft, FLOOR 2: 1076 sq. ft
EXCLUDED AREAS: STORAGE: 164 sq. ft, BASEMENT: 352 sq. ft, PATIO: 337 sq. ft,
PORCH: 46 sq. ft, GARAGE: 611 sq. ft, CARPORT: 578 sq. ft,
EMBEDDEDWINDOW: 9 sq. ft

MEASUREMENTS CALCULATED BY V1Photos.com ARE DEEMED HIGHLY RELIABLE BUT NOT GUARANTEED.



Disclaimer: Sizes and Dimensions are Approximate, Actual May Vary.



Michael Lunden
303-525-6540
mdlunden@gmail.com



