



901 Orion Way
Castle Rock, CO 80108



Single Family



2728 SQFT



4 Beds



2/1 Baths



3 Car



0.18 Acre



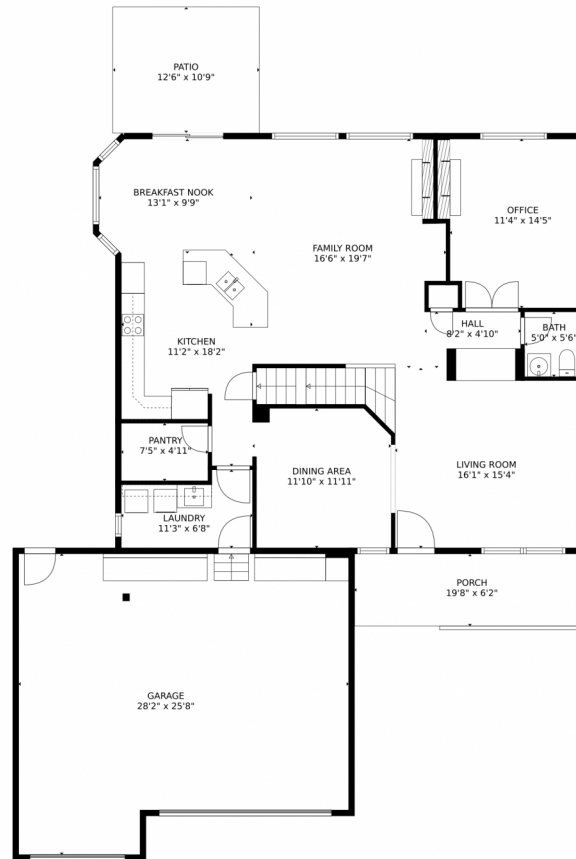
Tatyana Sturm
720-350-5909
tatyana@exitrealtydtc.com
<https://thestorckteam.com>



Scan code
for more
property
details



901 Orion Way, Castle Rock, CO 80108 – 1st Floor



TOTAL: 2658 sq. ft
Below Ground: 0 sq. ft, FLOOR 2: 1393 sq. ft, FLOOR 3: 1265 sq. ft
EXCLUDED AREAS: BASEMENT: 1330 sq. ft, GARAGE: 656 sq. ft, PATIO: 135 sq. ft,
PORCH: 122 sq. ft, OPEN TO BELOW: 195 sq. ft

MEASUREMENTS CALCULATED BY V1Photos.com ARE DEEMED HIGHLY RELIABLE BUT NOT GUARANTEED.



Disclaimer: Sizes and Dimensions are Approximate, Actual May Vary.



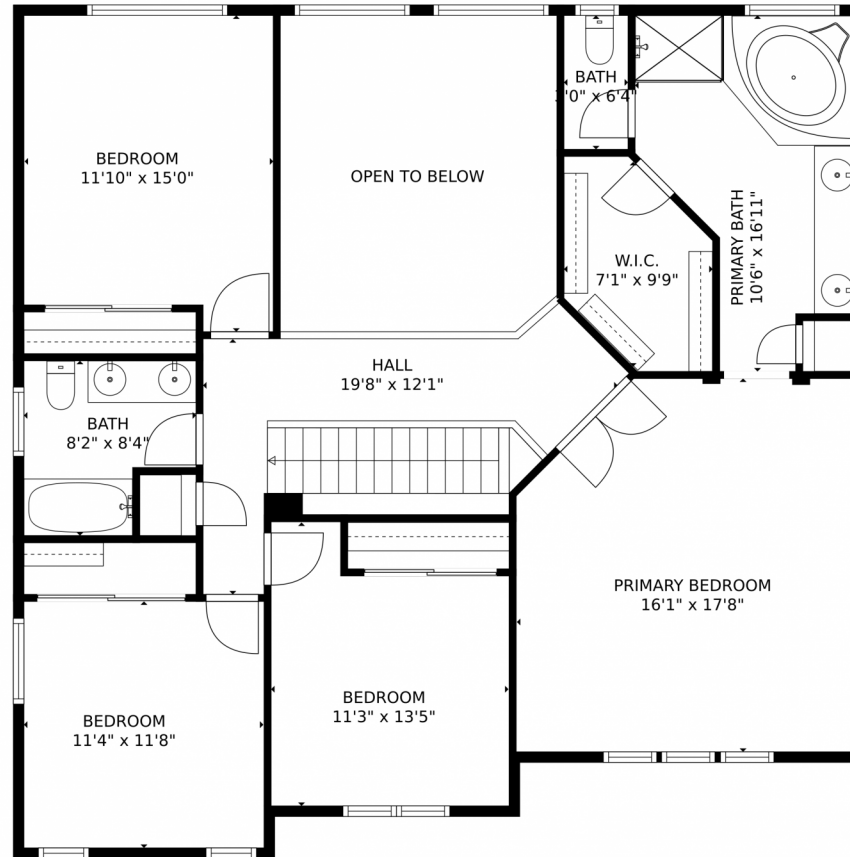
Tatyana Sturm
720-350-5909
tatyana@exitrealttydtc.com
<https://thestorckteam.com>



Scan code
for more
property
details



901 Orion Way, Castle Rock, CO 80108 – 2nd Floor



TOTAL: 2658 sq. ft
Below Ground: 0 sq. ft, FLOOR 2: 1393 sq. ft, FLOOR 3: 1265 sq. ft
EXCLUDED AREAS: BASEMENT: 1330 sq. ft, GARAGE: 656 sq. ft, PATIO: 135 sq. ft,
PORCH: 122 sq. ft, OPEN TO BELOW: 195 sq. ft
MEASUREMENTS CALCULATED BY V1Photos.com ARE DEEMED HIGHLY RELIABLE BUT NOT GUARANTEED.



Disclaimer: Sizes and Dimensions are Approximate, Actual May Vary.



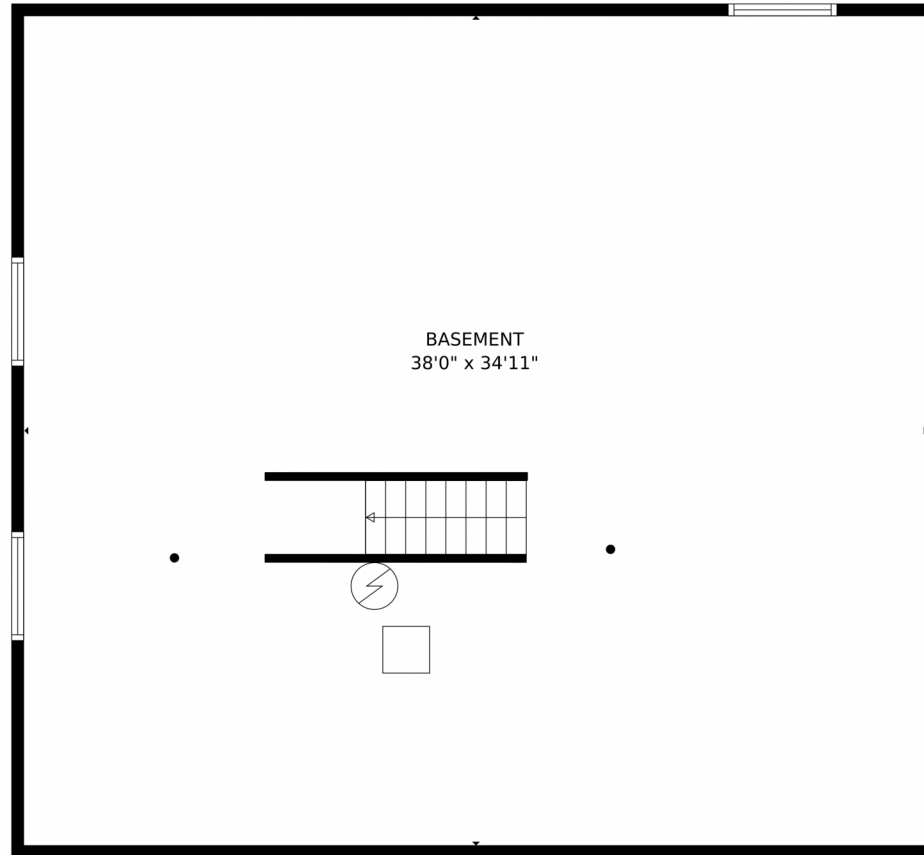
Tatyana Sturm
720-350-5909
tatyana@exitrealtydtc.com
<https://thestorckteam.com>



Scan code
for more
property
details



901 Orion Way, Castle Rock, CO 80108 – Basement



BASEMENT
38'0" x 34'11"

TOTAL: 2658 sq. ft
Below Ground: 0 sq. ft, FLOOR 2: 1393 sq. ft, FLOOR 3: 1265 sq. ft
EXCLUDED AREAS: BASEMENT: 1330 sq. ft, GARAGE: 656 sq. ft, PATIO: 135 sq. ft,
PORCH: 122 sq. ft, OPEN TO BELOW: 195 sq. ft

MEASUREMENTS CALCULATED BY V1Photos.com ARE DEEMED HIGHLY RELIABLE BUT NOT GUARANTEED.



Disclaimer: Sizes and Dimensions are Approximate, Actual May Vary.



Tatyana Sturm
720-350-5909
tatyana@exitrealtydtc.com
<https://thestorckteam.com>



901 Orion Way, Castle Rock, CO 80108 – All Floors



TOTAL: 2658 sq. ft
Below Ground: 0 sq. ft, FLOOR 2: 1393 sq. ft, FLOOR 3: 1265 sq. ft
EXCLUDED AREAS: BASEMENT: 1330 sq. ft, GARAGE: 656 sq. ft, PATIO: 135 sq. ft,
PORCH: 122 sq. ft, OPEN TO BELOW: 195 sq. ft

MEASUREMENTS CALCULATED BY V1Photos.com ARE DEEMED HIGHLY RELIABLE BUT NOT GUARANTEED.



Disclaimer: Sizes and Dimensions are Approximate, Actual May Vary.



Tatyana Sturm
720-350-5909
tatyana@exitrealtydtc.com
<https://thestorckteam.com>



Scan code
for more
property
details

