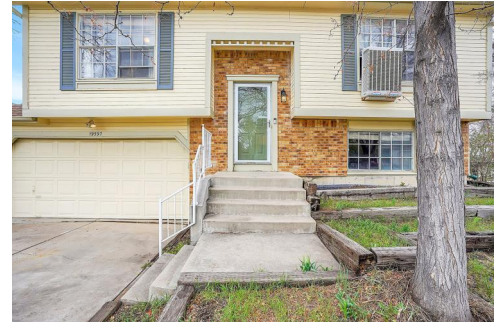


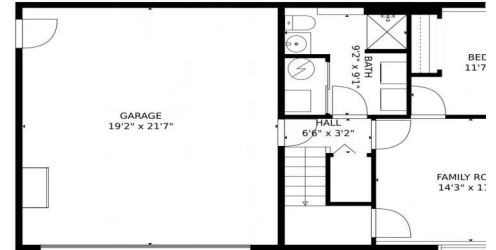


19597 East Nassau Drive
 Aurora, CO 80013
 COMMUNITY: Hampden Hills

MLS # 4363844



19597 East Nassau Drive, Aurora, CO 80013 - Lower Level



Single Family

1439 SQFT

3 Beds

2 Baths

2 Car

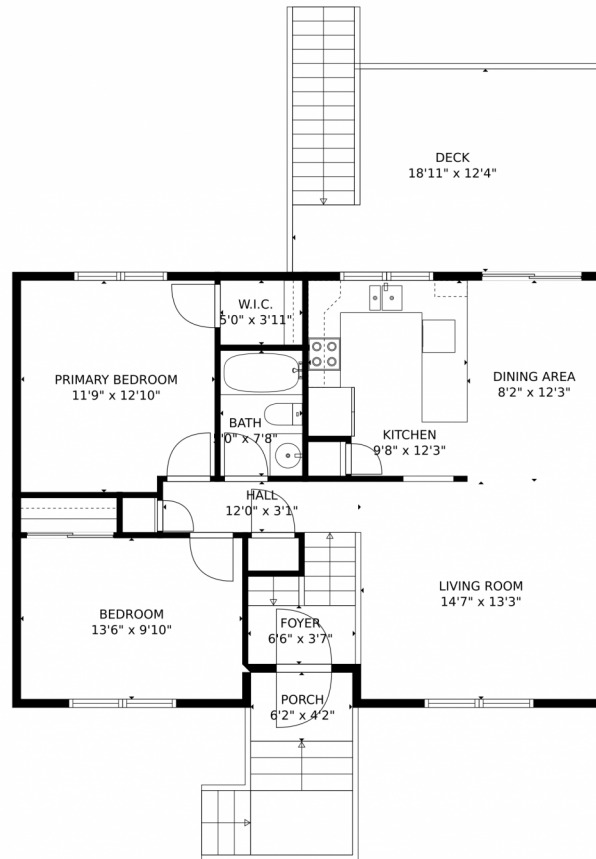
0.16 Acre



Shawn Engel
 303-308-8000
 shawnengel@earthlink.net
<http://www.corealestateonline.com>



19597 East Nassau Drive, Aurora, CO 80013 – Main Level



TOTAL: 1344 sq. ft
Below Ground: 462 sq. ft, FLOOR 2: 882 sq. ft
EXCLUDED AREAS: GARAGE: 414 sq. ft, PORCH: 26 sq. ft, DECK: 200 sq. ft
MEASUREMENTS CALCULATED BY V1Photos.com ARE DEEMED HIGHLY RELIABLE BUT NOT GUARANTEED.



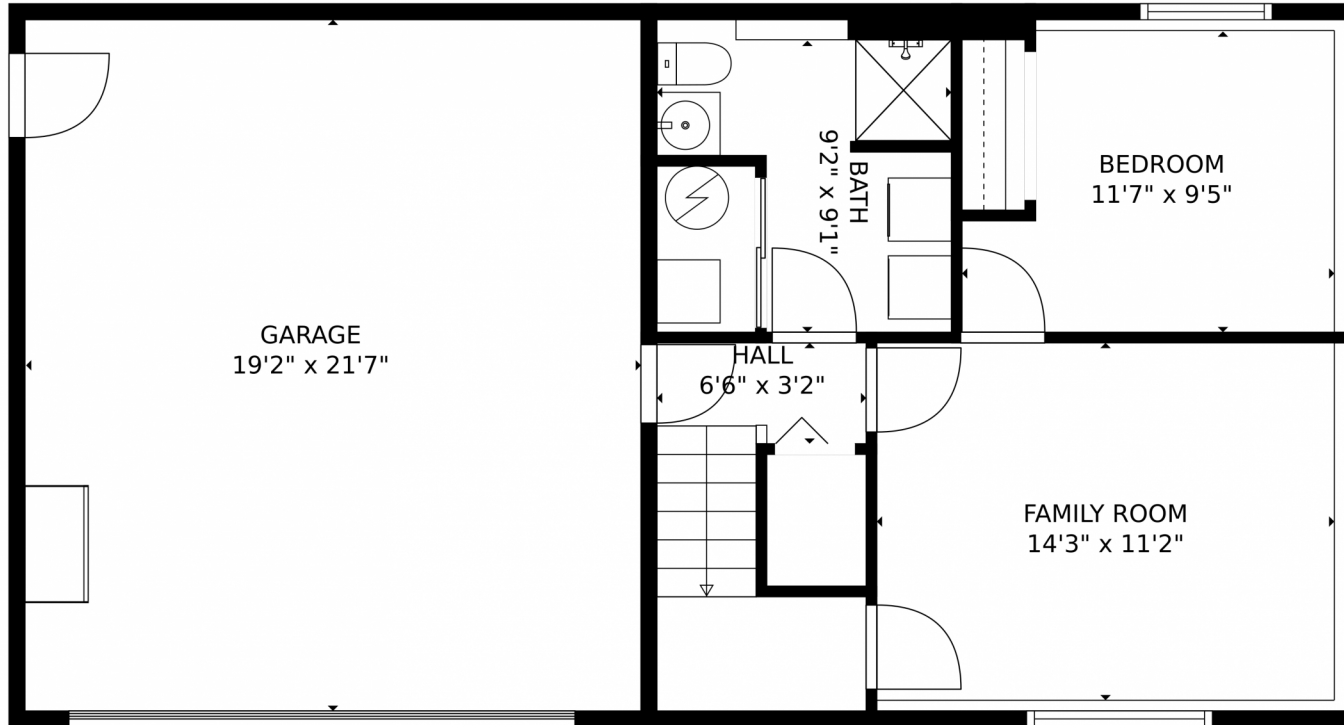
Disclaimer: Sizes and Dimensions are Approximate, Actual May Vary.



Shawn Engel
303-308-8000
shawnengel@earthlink.net
<http://www.corealestateonline.com>



19597 East Nassau Drive, Aurora, CO 80013 – Lower Level



TOTAL: 1344 sq. ft
Below Ground: 462 sq. ft, FLOOR 2: 882 sq. ft
EXCLUDED AREAS: GARAGE: 414 sq. ft, PORCH: 26 sq. ft, DECK: 200 sq. ft
MEASUREMENTS CALCULATED BY V1Photos.com ARE DEEMED HIGHLY RELIABLE BUT NOT GUARANTEED.



Disclaimer: Sizes and Dimensions are Approximate, Actual May Vary.



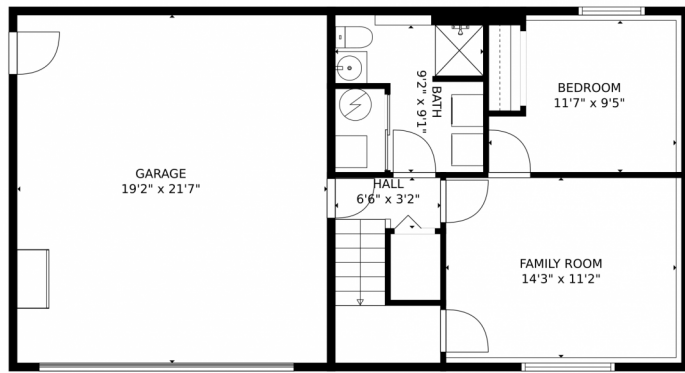
Shawn Engel
303-308-8000
shawnengel@earthlink.net
<http://www.corealestateonline.com>



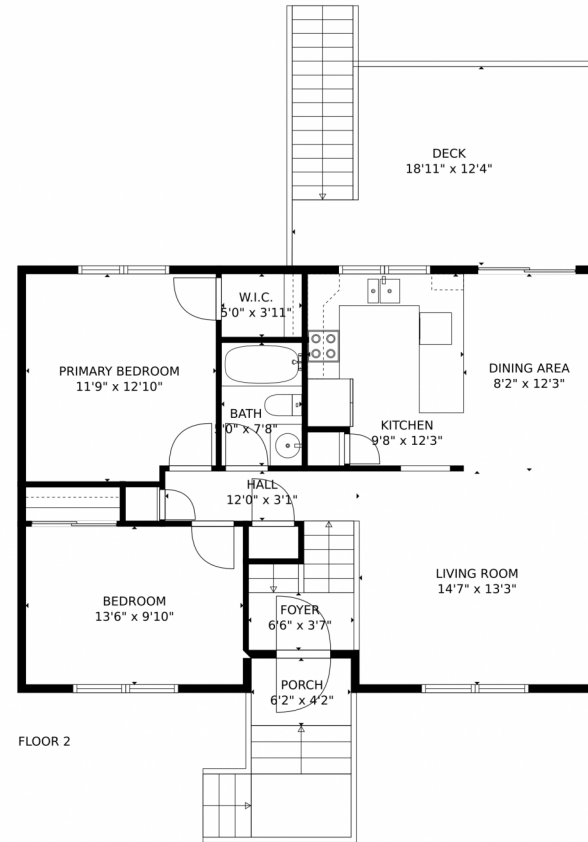
Scan code
for more
property
details



19597 East Nassau Drive, Aurora, CO 80013 – All Levels



FLOOR 1



FLOOR 2

TOTAL: 1344 sq. ft
Below Ground: 462 sq. ft, FLOOR 2: 882 sq. ft
EXCLUDED AREAS: GARAGE: 414 sq. ft, PORCH: 26 sq. ft, DECK: 200 sq. ft
MEASUREMENTS CALCULATED BY V1Photos.com ARE DEEMED HIGHLY RELIABLE BUT NOT GUARANTEED.



Disclaimer: Sizes and Dimensions are Approximate, Actual May Vary.



Shawn Engel
303-308-8000
shawnengel@earthlink.net
<http://www.corealestateonline.com>



Scan code
for more
property
details

