



Single Family



1356 SQFT



3 Beds



2/1 Baths



1 Car



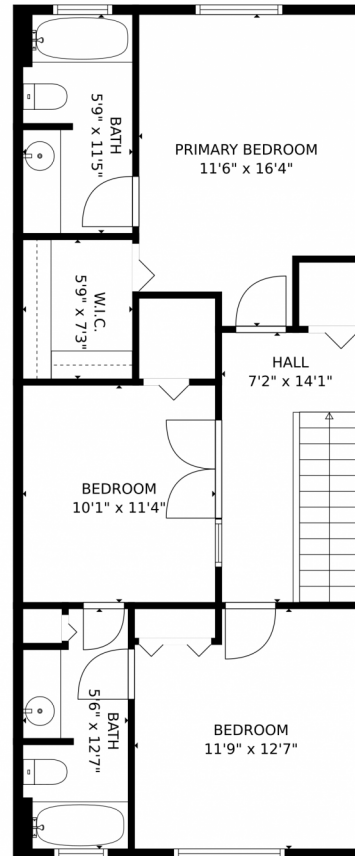
Christopher Hall
954-707-1307
christopherhall@keyes.com



Scan code
for more
property
details



490 Saint Tropez Lane, Margate, FL 33068 – 2nd Level



TOTAL: 1320 sq. ft
Below Ground: 553 sq. ft, FLOOR 2: 767 sq. ft
EXCLUDED AREAS: GARAGE: 203 sq. ft

MEASUREMENTS CALCULATED BY V1Photos.com ARE DEEMED HIGHLY RELIABLE BUT NOT GUARANTEED.



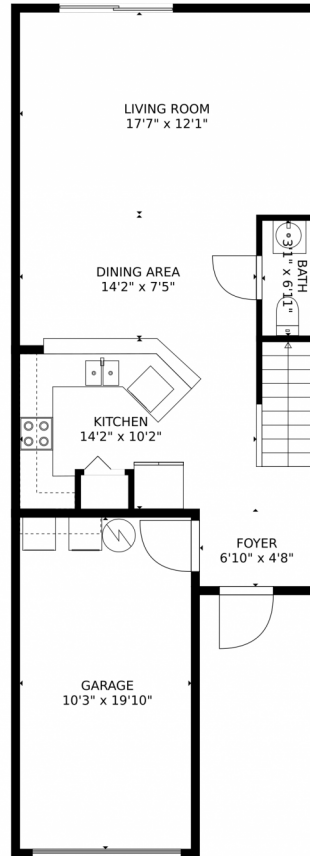
Disclaimer: Sizes and Dimensions are Approximate, Actual May Vary.



Christopher Hall
954-707-1307
christopherhall@keyes.com



490 Saint Tropez Lane, Margate, FL 33068 — 1st Level



TOTAL: 1320 sq. ft
Below Ground: 553 sq. ft, FLOOR 2: 767 sq. ft
EXCLUDED AREAS: GARAGE: 203 sq. ft

MEASUREMENTS CALCULATED BY V1Photos.com ARE DEEMED HIGHLY RELIABLE BUT NOT GUARANTEED.



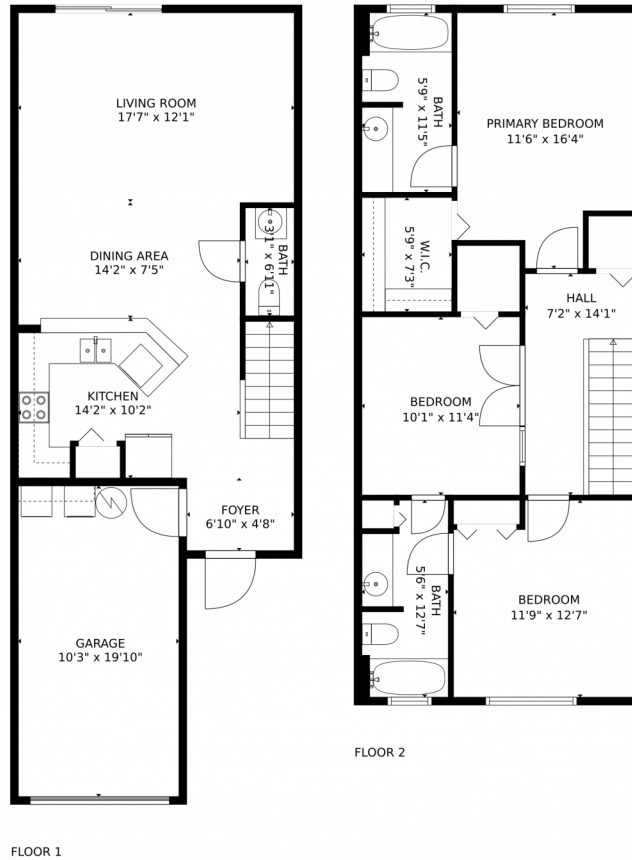
Disclaimer: Sizes and Dimensions are Approximate, Actual May Vary.



Christopher Hall
954-707-1307
christopherhall@keyes.com



490 Saint Tropez Lane, Margate, FL 33068 – All Levels



TOTAL: 1320 sq. ft
Below Ground: 553 sq. ft, FLOOR 2: 767 sq. ft
EXCLUDED AREAS: GARAGE: 203 sq. ft

MEASUREMENTS CALCULATED BY V1Photos.com ARE DEEMED HIGHLY RELIABLE BUT NOT GUARANTEED.



Disclaimer: Sizes and Dimensions are Approximate, Actual May Vary.



Christopher Hall
954-707-1307
christopherhall@keyes.com

