



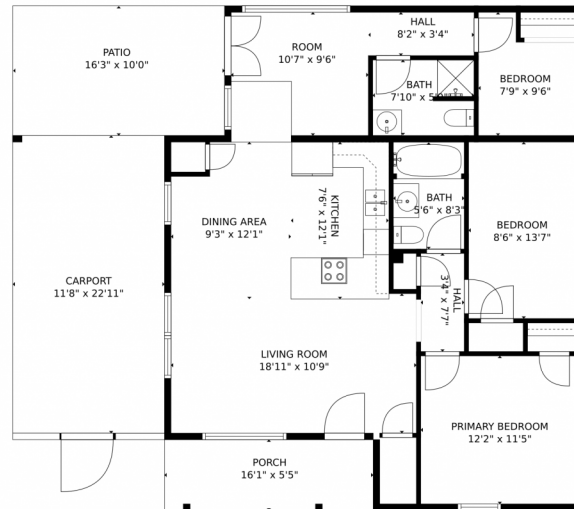
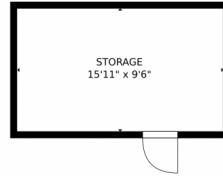
 Single Family  1000 SQFT



Taylor Haas
303-665-7368
taylorh@coloradorpm.com
<https://www.coloradorpm.com/available-rental-properties-denver>



2761 South Hazel Court, Denver, CO 80236 – Main Level



TOTAL: 1056 sq. ft
FLOOR 1: 1056 sq. ft
EXCLUDED AREAS: STORAGE: 151 sq. ft, PORCH: 88 sq. ft, PATIO: 163 sq. ft,
CARPORT: 268 sq. ft

MEASUREMENTS CALCULATED BY V1Photos.com ARE DEEMED HIGHLY RELIABLE BUT NOT GUARANTEED.



Disclaimer: Sizes and Dimensions are Approximate, Actual May Vary.



Taylor Haas

303-665-7368

taylorh@coloradopr.com

<https://www.coloradopr.com/available-rental-properties-denver>



Scan code
for more
property
details

