



1830 Jules Lane
 Louisville, CO 80027
 COMMUNITY: Overlook at Steel Ranch

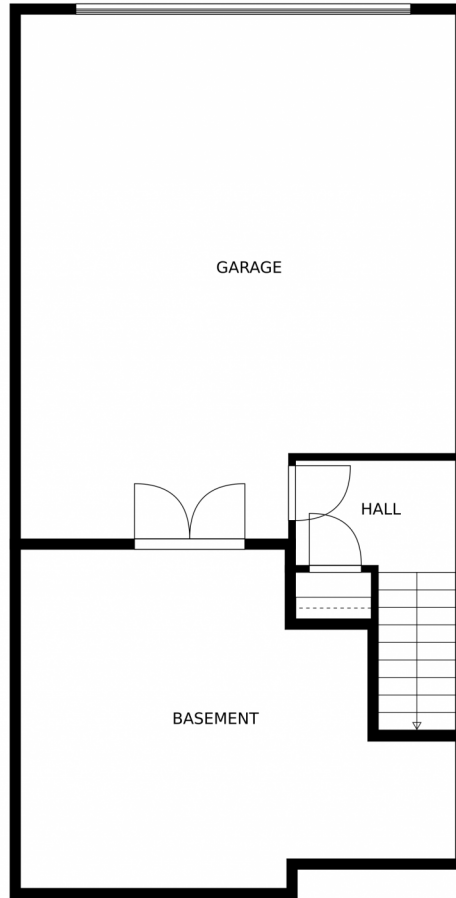


Townhouse 2426 SQFT 3 Beds 2/1 Baths 2 Car



Carolyn Bleicher
 303-219-1771
 carolyn@carolynbleicher.com





MEASUREMENTS CALCULATED BY V1Photos.com ARE DEEMED HIGHLY RELIABLE BUT NOT GUARANTEED.

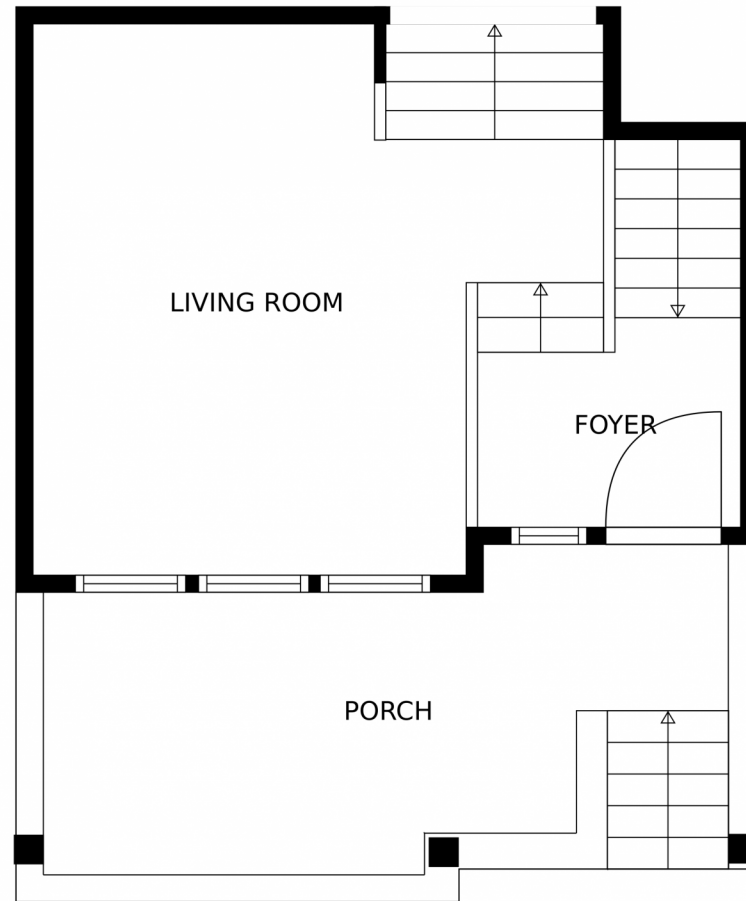


Disclaimer: Sizes and Dimensions are Approximate, Actual May Vary.



Carolyn Bleicher
303-219-1771
carolyn@carolynbleicher.com





MEASUREMENTS CALCULATED BY V1Photos.com ARE DEEMED HIGHLY RELIABLE BUT NOT GUARANTEED.

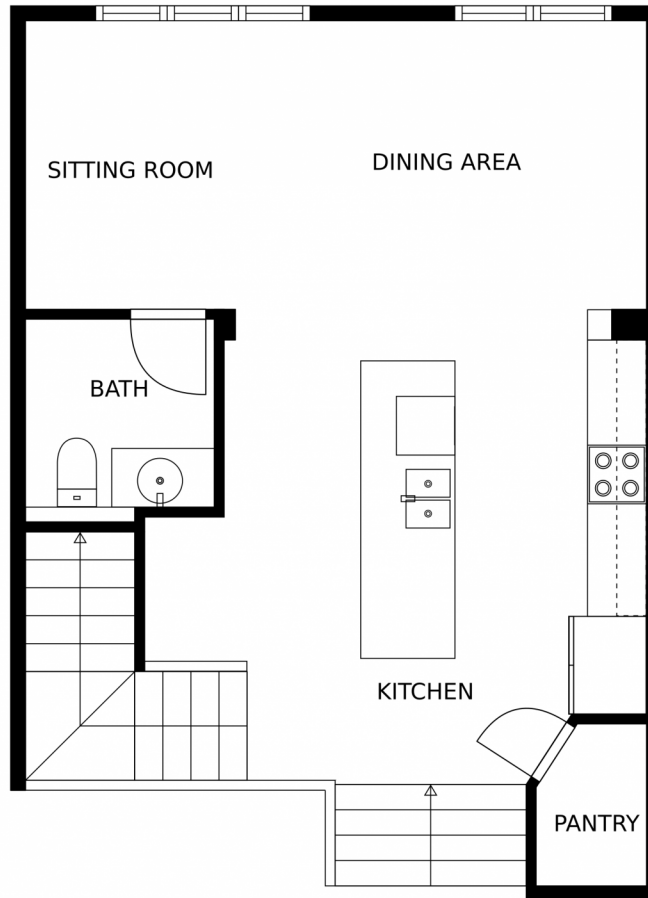


Disclaimer: Sizes and Dimensions are Approximate, Actual May Vary.



Carolyn Bleicher
303-219-1771
carolyn@carolynbleicher.com





MEASUREMENTS CALCULATED BY V1Photos.com ARE DEEMED HIGHLY RELIABLE BUT NOT GUARANTEED.

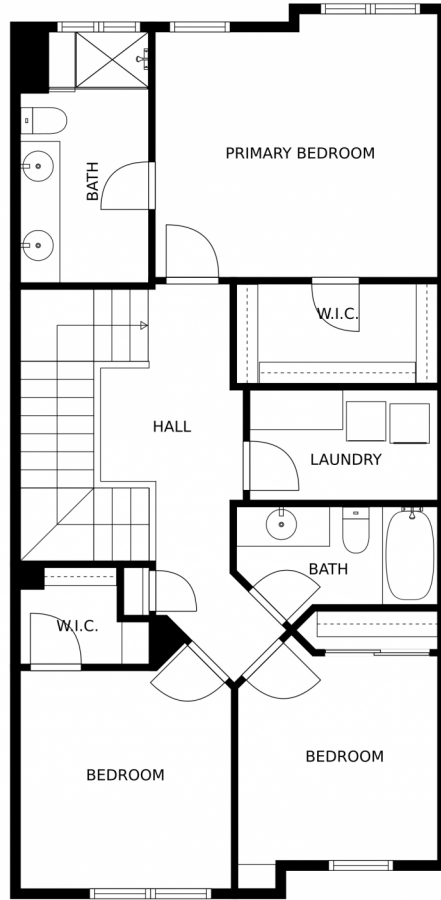


Disclaimer: Sizes and Dimensions are Approximate, Actual May Vary.



Carolyn Bleicher
303-219-1771
carolyn@carolynbleicher.com





MEASUREMENTS CALCULATED BY V1Photos.com ARE DEEMED HIGHLY RELIABLE BUT NOT GUARANTEED.



Disclaimer: Sizes and Dimensions are Approximate, Actual May Vary.



Carolyn Bleicher
303-219-1771
carolyn@carolynbleicher.com



1830 Jules Lane, Louisville, CO 80027 – All Levels



MEASUREMENTS CALCULATED BY V1Photos.com ARE DEEMED HIGHLY RELIABLE BUT NOT GUARANTEED.

Disclaimer: Sizes and Dimensions are Approximate, Actual May Vary.



Carolyn Bleicher
303-219-1771
carolyn@carolynbleicher.com



Scan code
for more
property
details