

Located in the coveted equestrian community of Hidden Village in Parker CO



 Single Family  3471 SQFT  4 Beds  3 Baths  4 Car  5.2 Acre

## PROPERTY DETAILS

This 5.2 acre horse property in Parker is a dream for equestrian lovers. It features a 20 foot bridal path and connects to a trail riding system. The lot offers stunning mountain views and is located in the desirable Hidden Village neighborhood. The kitchen has been remodeled with high-end finishes and stainless steel appliances. The great room boasts vaulted ceilings, stunning mountain views and a remodeled wood burning fireplace. The primary bedroom has oak hardwood floors and beautiful mountain views from your bed. The property includes a 3 stall barn, fenced pastures, and more acreage for grazing. Recent upgrades include a new hail resistant class 4 roof, exterior paint, hot water heater, and furnace. Don't miss the opportunity to own this quintessential horse property in Parker!



**Jodi Rae Randa**  
720-244-1796  
jodi@jodiranda.com  
<https://JodiRanda.com>



Scan code  
for more  
property  
details



# 7427 N Village Road, Parker, CO 80134 – Main Level



**TOTAL: 3137 sq. ft**  
Below Ground: 1341 sq. ft, FLOOR 2: 1796 sq. ft, FLOOR 3: 0 sq. ft  
EXCLUDED AREAS: ELECTRICAL ROOM: 89 sq. ft, COVERED PATIO: 931 sq. ft, GARAGE: 1110 sq. ft,  
COVERED DECK: 172 sq. ft, DECK: 533 sq. ft, PATIO: 1504 sq. ft,  
PORCH: 720 sq. ft

MEASUREMENTS CALCULATED BY V1Photos.com ARE DEEMED HIGHLY RELIABLE BUT NOT GUARANTEED.



Disclaimer: Sizes and Dimensions are Approximate, Actual May Vary.



Jodi Rae Randa  
720-244-1796  
jodi@jodiranda.com  
<https://JodiRanda.com>

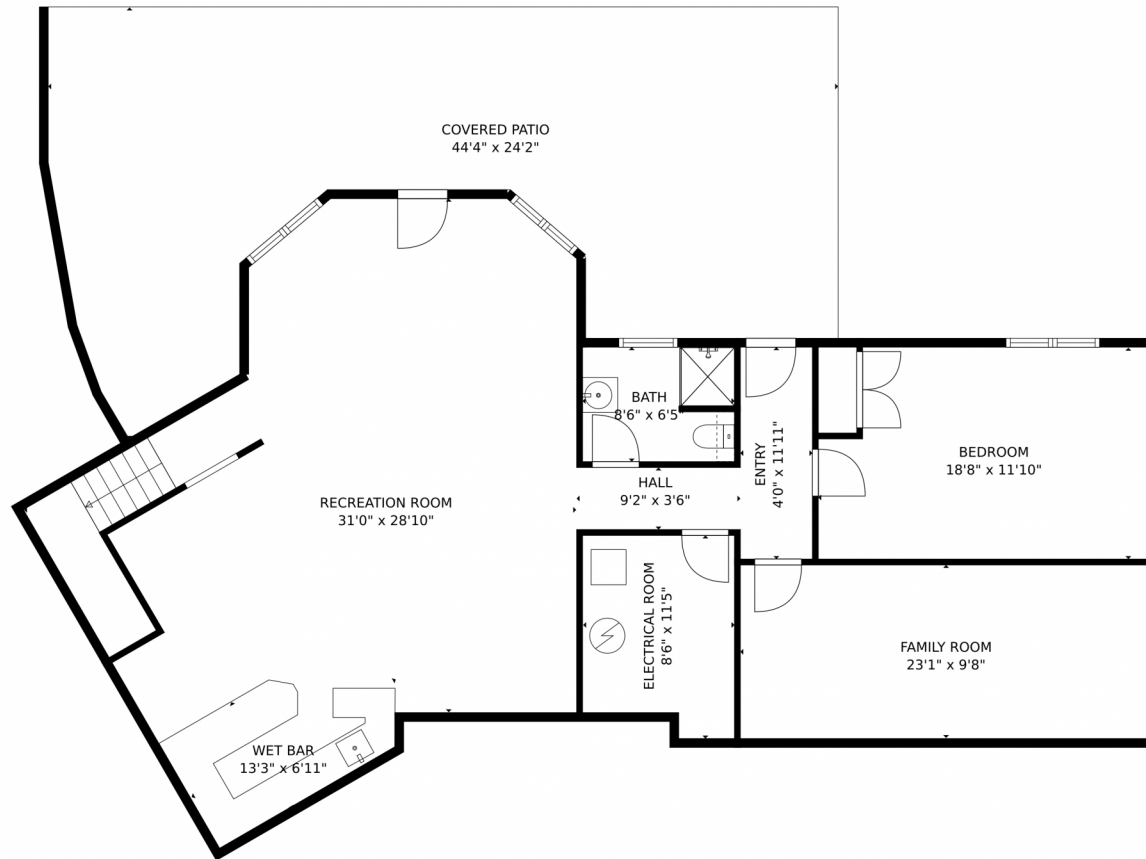


Scan code  
for more  
property  
details





# 7427 N Village Road, Parker, CO 80134 – Lower Level



**TOTAL: 3137 sq. ft**  
Below Ground: 1341 sq. ft, FLOOR 2: 1796 sq. ft, FLOOR 3: 0 sq. ft  
EXCLUDED AREAS: ELECTRICAL ROOM: 89 sq. ft, COVERED PATIO: 931 sq. ft, GARAGE: 1110 sq. ft,  
COVERED DECK: 172 sq. ft, DECK: 533 sq. ft, PATIO: 1504 sq. ft,  
PORCH: 720 sq. ft

MEASUREMENTS CALCULATED BY V1Photos.com ARE DEEMED HIGHLY RELIABLE BUT NOT GUARANTEED.



Disclaimer: Sizes and Dimensions are Approximate, Actual May Vary.



Jodi Rae Randa  
720-244-1796  
jodi@jodiranda.com  
<https://JodiRanda.com>



Scan code  
for more  
property  
details

