



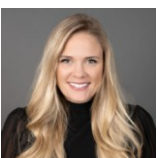
46186 Needle Leaf Lane  
Parker, CO 80138



Single Family



5062 SQFT



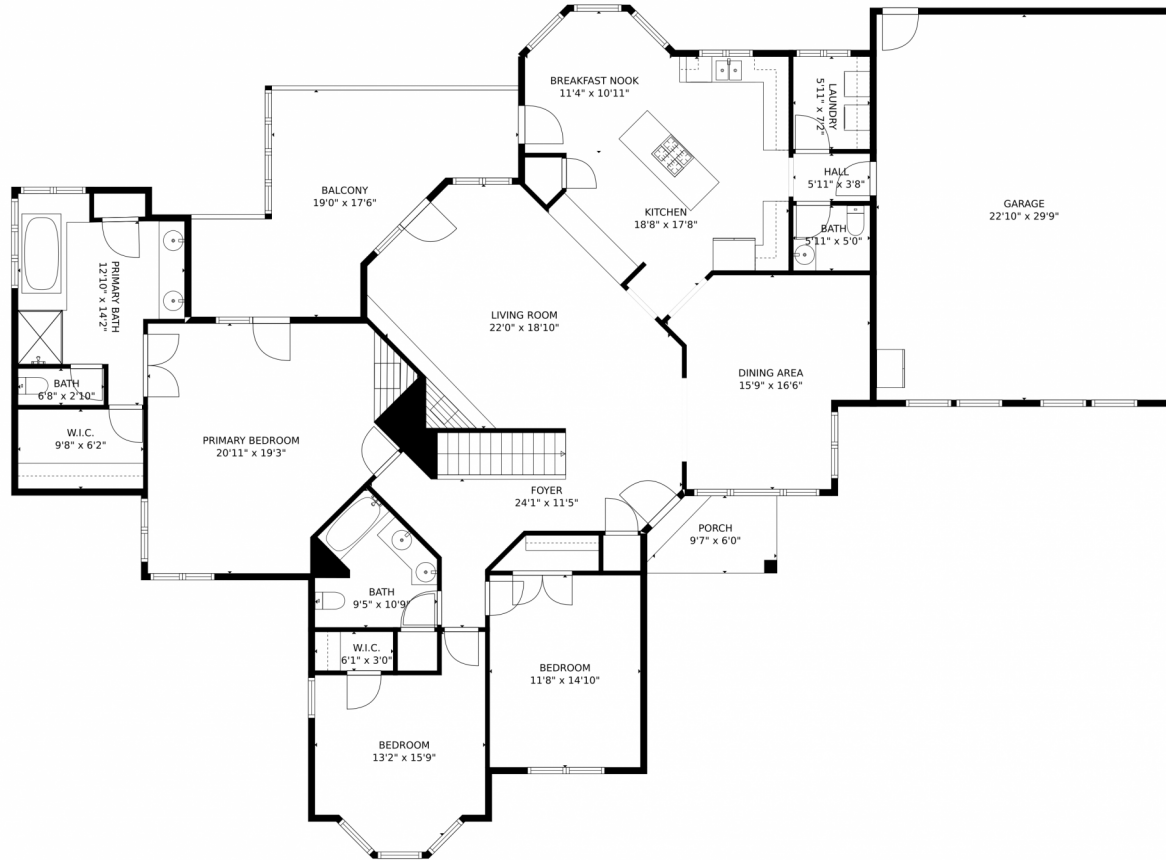
**Andrea Price**  
303-956-9691  
andrea@pricecohomes.com



Scan code  
for more  
property  
details



# 46186 Needle Leaf Lane, Parker, CO 80138 – Main Level



**TOTAL: 3999 sq. ft**  
Below Ground: 1674 sq. ft, FLOOR 2: 2325 sq. ft  
EXCLUDED AREAS: STORAGE: 603 sq. ft, PORCH: 343 sq. ft, PATIO: 1175 sq. ft,  
GARAGE: 678 sq. ft, BALCONY: 271 sq. ft

MEASUREMENTS CALCULATED BY V1Photos.com ARE DEEMED HIGHLY RELIABLE BUT NOT GUARANTEED.



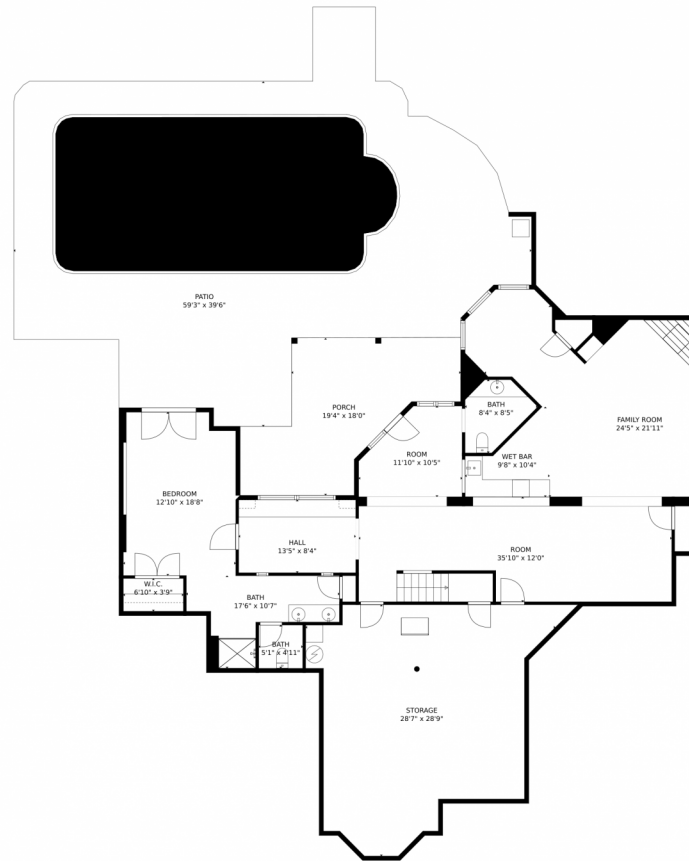
Disclaimer: Sizes and Dimensions are Approximate, Actual May Vary.



**Andrea Price**  
303-956-9691  
andrea@pricecohomes.com



# 46186 Needle Leaf Lane, Parker, CO 80138 – Lower Level



**TOTAL: 3999 sq. ft**  
Below Ground: 1674 sq. ft, FLOOR 2: 2325 sq. ft  
EXCLUDED AREAS: STORAGE: 603 sq. ft, PORCH: 343 sq. ft, PATIO: 1175 sq. ft,  
GARAGE: 678 sq. ft, BALCONY: 271 sq. ft

MEASUREMENTS CALCULATED BY V1Photos.com ARE DEEMED HIGHLY RELIABLE BUT NOT GUARANTEED.

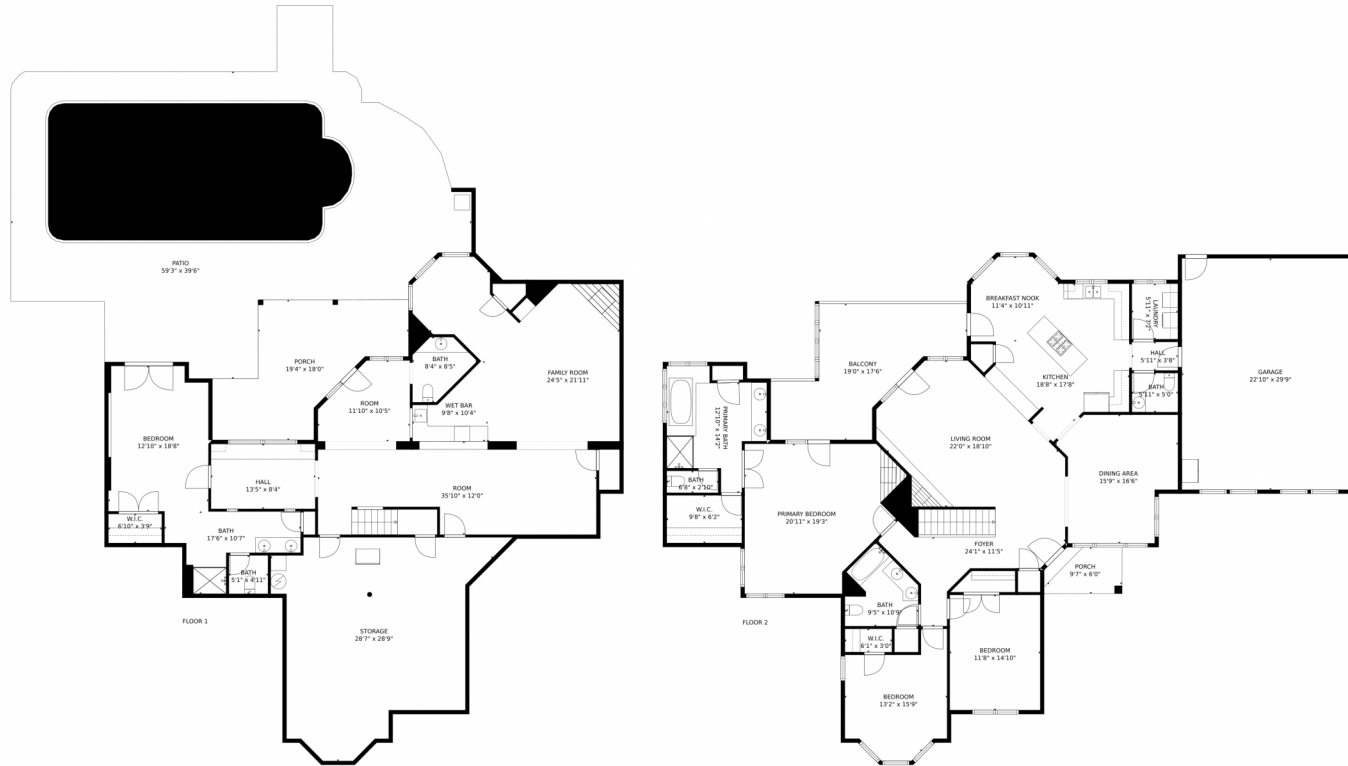
Disclaimer: Sizes and Dimensions are Approximate, Actual May Vary.



**Andrea Price**  
303-956-9691  
andrea@pricecohomes.com



# 46186 Needle Leaf Lane, Parker, CO 80138 – All Levels



**TOTAL: 3999 sq. ft**  
Below Ground: 1674 sq. ft, FLOOR 2: 2325 sq. ft  
EXCLUDED AREAS: STORAGE: 603 sq. ft, PORCH: 343 sq. ft, PATIO: 1175 sq. ft,  
GARAGE: 678 sq. ft, BALCONY: 271 sq. ft

MEASUREMENTS CALCULATED BY V1Photos.com ARE DEEMED HIGHLY RELIABLE BUT NOT GUARANTEED.



Disclaimer: Sizes and Dimensions are Approximate, Actual May Vary.



**Andrea Price**  
303-956-9691  
andrea@pricecohomes.com

