



3682 Taft Court  
 Wheat Ridge, CO 80033  
 COMMUNITY: Applewood Ridge

MLS # 7803611  
 PRICE \$675,000



Single Family 2016 SQFT 2 Beds 2 Baths 2 Car 0.24 Acre

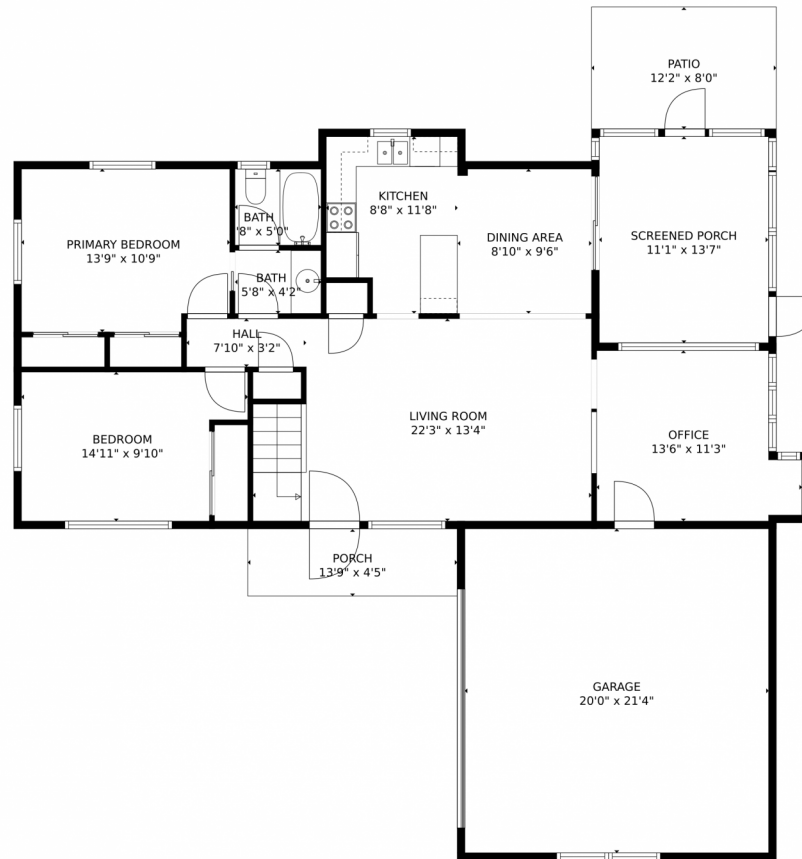
## PROPERTY DETAILS

Charming Applewood residence in Denver suburb, updated and move-in ready. Freshly painted with new lighting and refinished hardwood floors. New water heater, furnace, and central A/C. Unfinished basement offers customization potential. Screened porch and private yard. Historic charm, sociable neighborhoods, local recreation, convenient access to downtown Denver and the mountains. Amenities include Gold's Marketplace, Crown Hill Lake and Park, local shopping and restaurants, Clear Creek trails, and more. Make this exceptional home your own.

Anna Cromwell  
 720-591-6373  
 anna@exitrealtycherrycreek.com



# 3682 Taft Court, Wheat Ridge, CO 80033 – Main Level



**TOTAL: 1560 sq. ft**  
Below Ground: 534 sq. ft, FLOOR 2: 1026 sq. ft  
EXCLUDED AREAS: ELECTRICAL ROOM: 175 sq. ft, ROOM: 146 sq. ft, GARAGE: 426 sq. ft,  
SCREENED PORCH: 151 sq. ft, PORCH: 61 sq. ft, PATIO: 98 sq. ft

MEASUREMENTS CALCULATED BY V1Photos.com ARE DEEMED HIGHLY RELIABLE BUT NOT GUARANTEED.

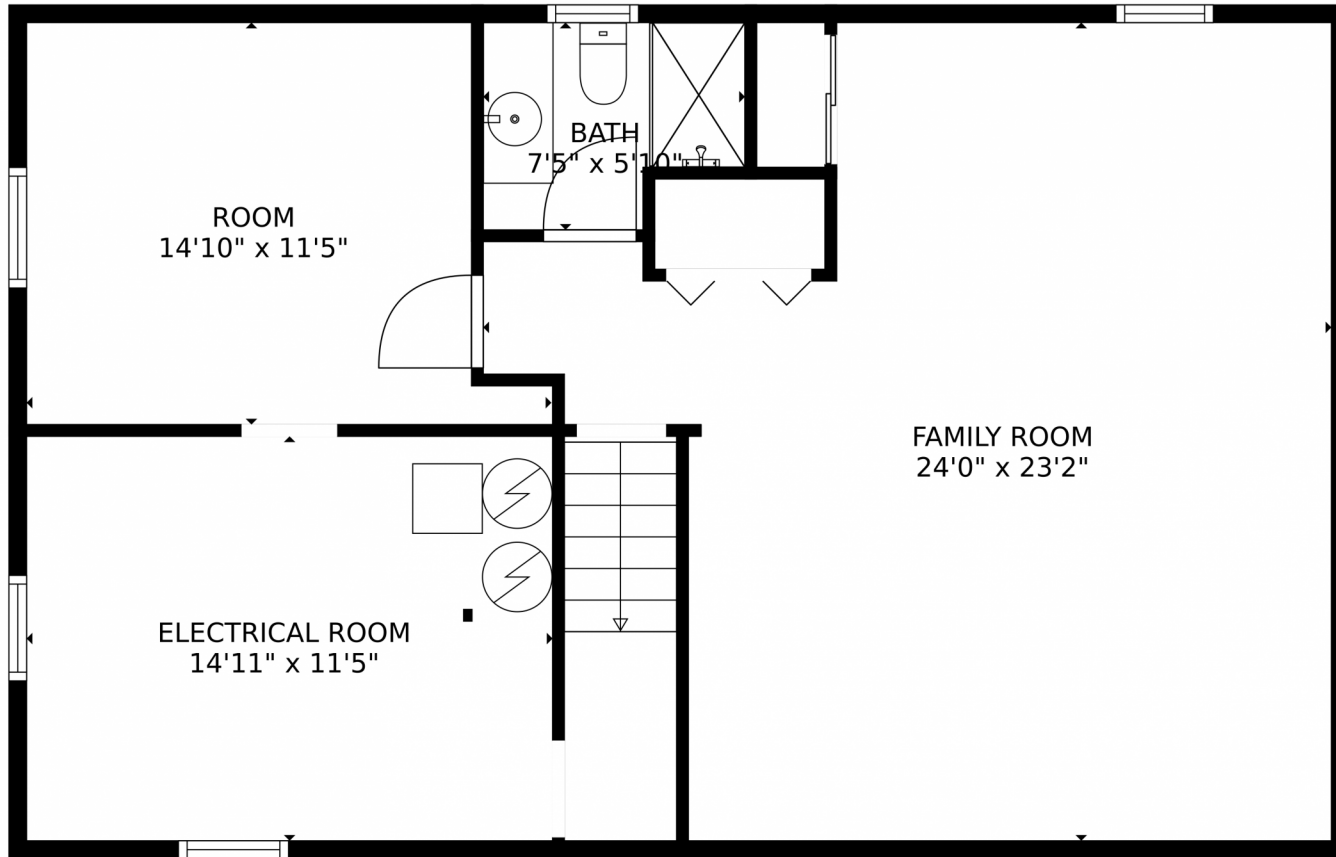


Disclaimer: Sizes and Dimensions are Approximate, Actual May Vary.

Anna Cromwell  
720-591-6373  
anna@exitrealtycherrycreek.com



3682 Taft Court, Wheat Ridge, CO 80033 – Lower Level



**TOTAL: 1560 sq. ft**  
Below Ground: 534 sq. ft, FLOOR 2: 1026 sq. ft  
EXCLUDED AREAS: ELECTRICAL ROOM: 175 sq. ft, ROOM: 146 sq. ft, GARAGE: 426 sq. ft,  
SCREENED PORCH: 151 sq. ft, PORCH: 61 sq. ft, PATIO: 98 sq. ft  
MEASUREMENTS CALCULATED BY V1Photos.com ARE DEEMED HIGHLY RELIABLE BUT NOT GUARANTEED.

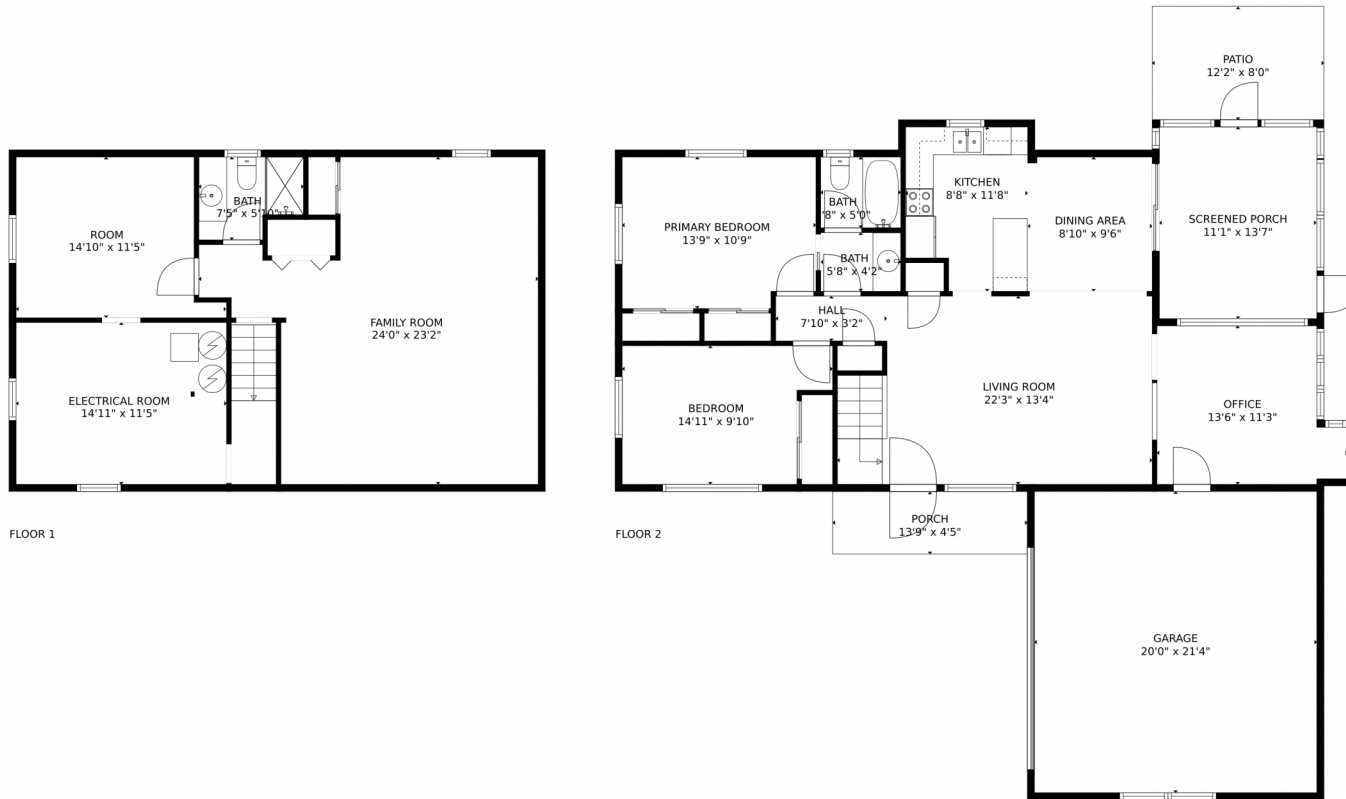


Disclaimer: Sizes and Dimensions are Approximate, Actual May Vary.

Anna Cromwell  
720-591-6373  
anna@exitrealtycherrycreek.com



# 3682 Taft Court, Wheat Ridge, CO 80033 – All Levels



**TOTAL: 1560 sq. ft**  
Below Ground: 534 sq. ft, FLOOR 2: 1026 sq. ft  
EXCLUDED AREAS: ELECTRICAL ROOM: 175 sq. ft, ROOM: 146 sq. ft, GARAGE: 426 sq. ft,  
SCREENED PORCH: 151 sq. ft, PORCH: 61 sq. ft, PATIO: 98 sq. ft

MEASUREMENTS CALCULATED BY V1Photos.com ARE DEEMED HIGHLY RELIABLE BUT NOT GUARANTEED.



Disclaimer: Sizes and Dimensions are Approximate, Actual May Vary.

Anna Cromwell  
720-591-6373  
anna@exitrealtycherrycreek.com

