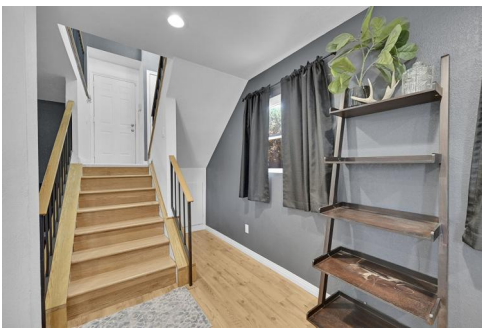


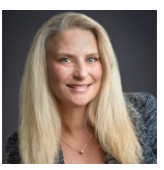


19407 East Utah Place
 Aurora, CO 80017
 COMMUNITY: Lexington East

MLS # 9780430



Single Family 1633 SQFT 3 Beds 2 Baths 1 Car

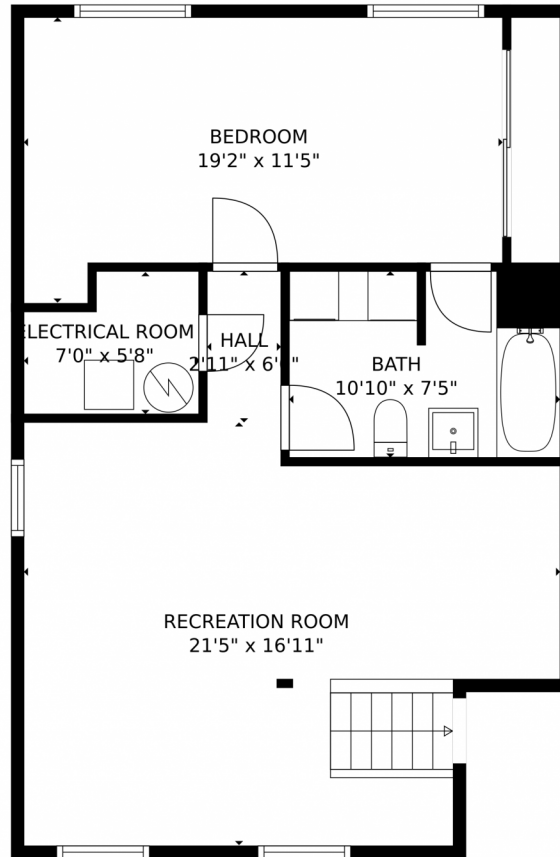


Julie Feder
 303-885-5892
 jfproperties@yourcastle.com

Scan code for more property details



19407 East Utah Place, Aurora, CO 80017 – Lower Level



TOTAL: 1451 sq. ft
Below Ground: 646 sq. ft, FLOOR 2: 805 sq. ft
EXCLUDED AREAS: ELECTRICAL ROOM: 35 sq. ft, GARAGE: 349 sq. ft, PORCH: 34 sq. ft,
PATIO: 260 sq. ft, FIREPLACE: 9 sq. ft
MEASUREMENTS CALCULATED BY V1Photos.com ARE DEEMED HIGHLY RELIABLE BUT NOT GUARANTEED.



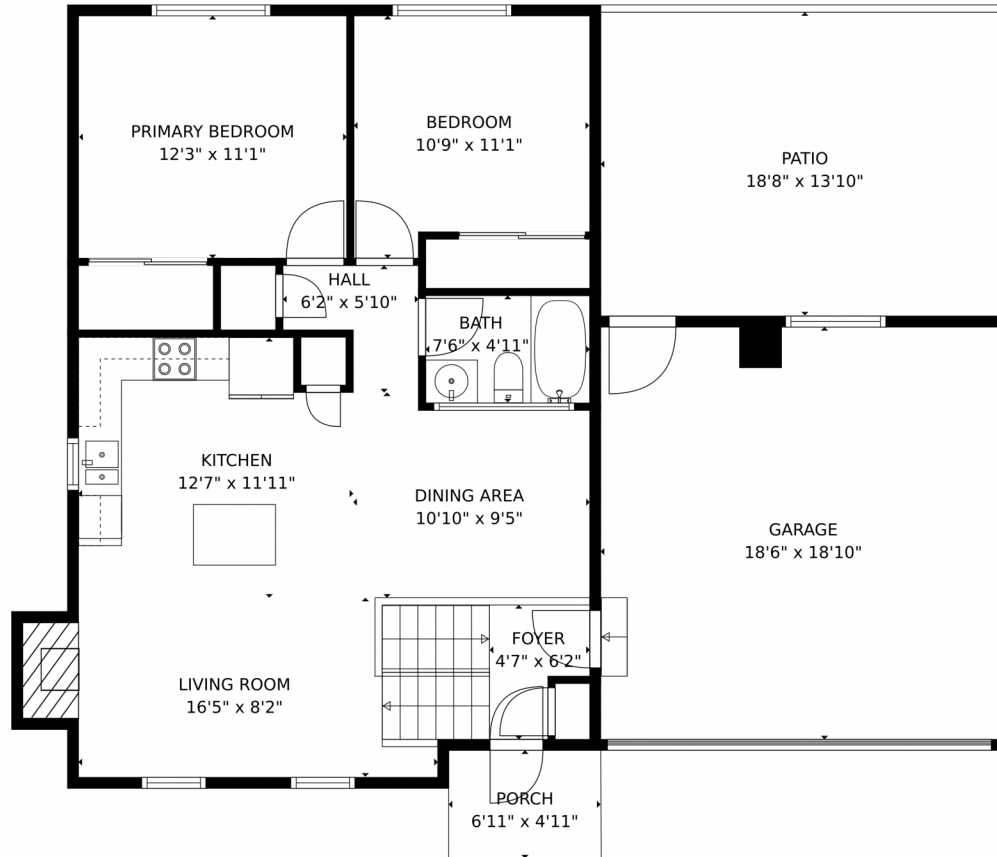
Disclaimer: Sizes and Dimensions are Approximate, Actual May Vary.



Julie Feder
303-885-5892
jfproperties@yourcastle.com



19407 East Utah Place, Aurora, CO 80017 – Mian Level



TOTAL: 1451 sq. ft

Below Ground: 646 sq. ft, FLOOR 2: 805 sq. ft

EXCLUDED AREAS: ELECTRICAL ROOM: 35 sq. ft, GARAGE: 349 sq. ft, PORCH: 34 sq. ft,

PATIO: 260 sq. ft, FIREPLACE: 9 sq. ft

MEASUREMENTS CALCULATED BY V1Photos.com ARE DEEMED HIGHLY RELIABLE BUT NOT GUARANTEED.



Disclaimer: Sizes and Dimensions are Approximate, Actual May Vary.

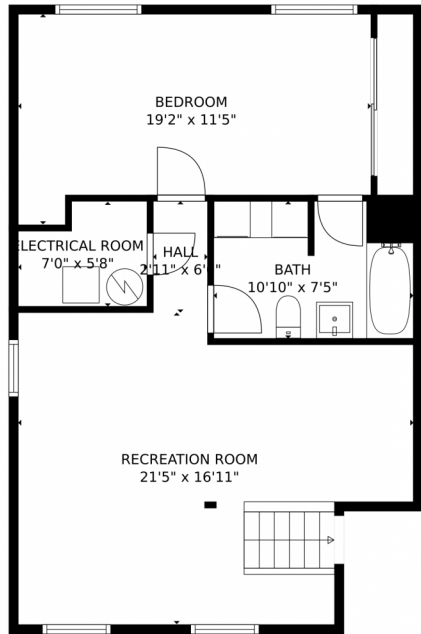


Julie Feder
303-885-5892
jfproperties@yourcastle.com

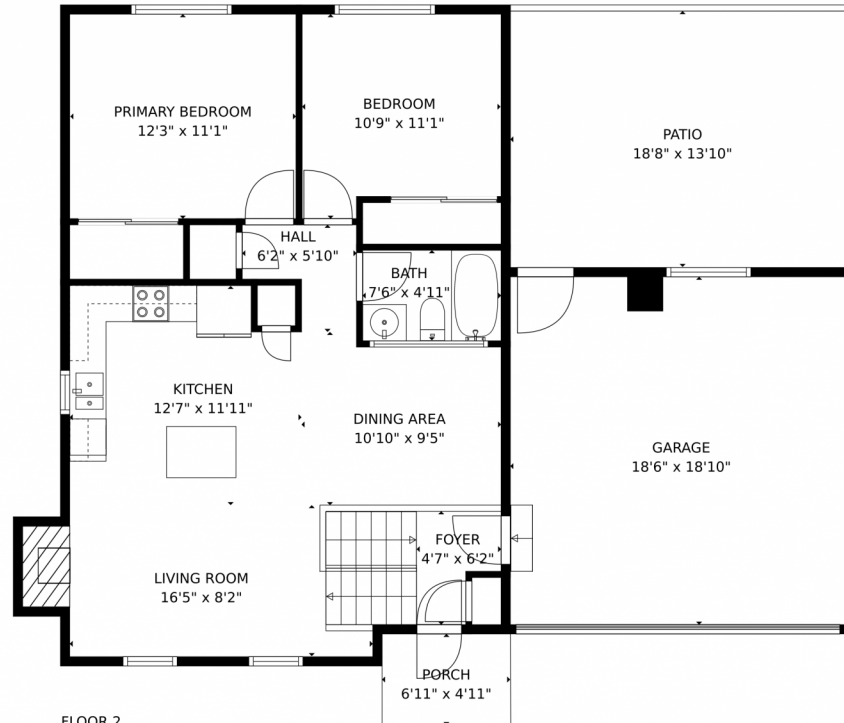


Scan code
for more
property
details

19407 East Utah Place, Aurora, CO 80017 – All Levels



FLOOR 1



FLOOR 2

TOTAL: 1451 sq. ft

Below Ground: 646 sq. ft, FLOOR 2: 805 sq. ft

EXCLUDED AREAS: ELECTRICAL ROOM: 35 sq. ft, GARAGE: 349 sq. ft, PORCH: 34 sq. ft,

PATIO: 260 sq. ft, FIREPLACE: 9 sq. ft

MEASUREMENTS CALCULATED BY V1Photos.com ARE DEEMED HIGHLY RELIABLE BUT NOT GUARANTEED.



Disclaimer: Sizes and Dimensions are Approximate, Actual May Vary.



Julie Feder
303-885-5892
jfproperties@yourcastle.com



Scan code
for more
property
details

